



What's new in Studio?

ASSESSMENTS & CONTENT LIBRARIES

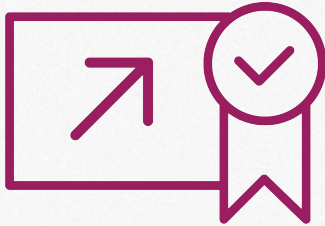
Ben Piscopo, Learning Designer
Training and Partner Enablement

What's new at edX?



MicroMasters™

Higher touch experience



Professional Certificate

More academic rigor

Prevent cheating & dishonesty

What's new in Studio?

Assessment Types

- Content Libraries
(Randomized Content Blocks)
- Open Response Assessments
- Drag 'n Drop, v2

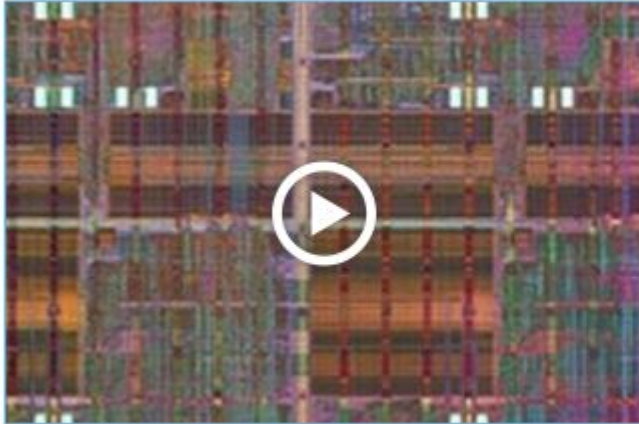
Assessment Updates

- Timed exams
- Prerequisite subsection
- Hints and Feedback
- Staff grading in ORAs
- Accessibility



Content Libraries

Use Case: Anant Agarwal's courses can be re-run without creating new problems for every run.



Circuits and Electronics 1: Basic Circuit Analysis

Learn techniques that are foundational to the design of microchips used in smartphones, computers, and the Internet





Content Libraries

Use Case: Randomizing assessments (w/ cohorts) further discourages cheating



Supply Chain Fundamentals

Learn fundamental concepts for logistics and supply chain management from both analytical and practical perspectives – part of the *MITx MicroMasters Credential in Supply Chain Management*.



Content Libraries

1. Pool problems of a similar topic or level in a *Content Library*.
2. Add *Randomized Content Blocks* to the course

A dark green rounded rectangular button with a white plus sign icon on the left and the text "New Library" in white.A light green rounded rectangular button with a white circle icon on the left and the text "Randomized Content Block" in white.

*LMA101x
Example!*

Content Library Considerations

- Use **1 content library per quiz** (topic or level).
- Provide **course team access**, not just 1 admin.
- Problems are randomized, **so award same number of points to each one**.
- When a content library updates, make sure to **manually update the RCB in the course**.



Timed Exams

Limit the amount of time allowed for taking an exam.

▶ A Day in the Life

- ✓ Released: Nov 02, 2016 at 14:00 UTC
- ✓ Quiz - Timed Exam

Time Allotted (HH:MM):

00:30

00:30

01:00

01:30

02:00

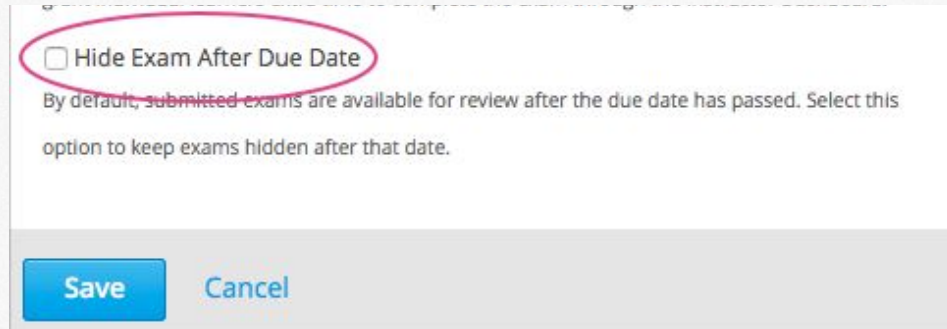
02:30

ment for the exam. If it is over 24 hours, type in the amount of
individual learners extra time to complete the exam through
board.

the subsection and enter a minimum score percentage to limit
section.

Timed Exams

“Special Exams” allow you to do more than preset timing.



Hide Exam After Due Date

By default, submitted exams are available for review after the due date has passed. Select this option to keep exams hidden after that date.

[Save](#) [Cancel](#)

Prerequisite Content

▶ A Day in the Life ⚙️ 📄 🗑️ ⋮

✓ Released: Nov 02, 2016 at 14:00 UTC

✓ Quiz

▶ Another Day in the Life ⚙️ 📄 🗑️ ⋮

✓ Released: Nov 02, 2016 at 14:00 UTC

🔒 Prerequisite: A Day in the Life





Open Response Assessment (ORA)

Use Case: “Feedback on my Writing” is available through peer assessment in this UQx course.



IELTS Academic Test Preparation

Prepare for the IELTS Academic tests in this comprehensive, self-paced course covering listening, speaking, reading and writing.



*IELTS
Example!*

Open Response Assessment (ORA)

Now with Staff Grading!

Staff-Graded ORA

This assignment has several steps. In the first step, you'll provide a response to the question. The other steps appear below the **Your Response** field.

1 | **Your Response**

IN PROGRESS

2 | Staff Grade

NOT AVAILABLE

Your Grade: Not Started



Open Response Assessment (ORA) *Management*

Below the ORA:

[MANAGE INDIVIDUAL LEARNERS](#) [VIEW ASSIGNMENT STATISTICS](#)

View Assignment Statistics ✕

Response total: **318**

Location: block-
v1:edX+DemoX.1+2T2017+type@openassessment+block@db15aa2e485b4ec0bf3c4ed169fd3217

Learner Progress

PROBLEM STEP	ACTIVE LEARNERS IN STEP
training	131
peer	45
self	3
waiting	3
done	136
cancelled	0

Open Response Assessment (ORA)

Management

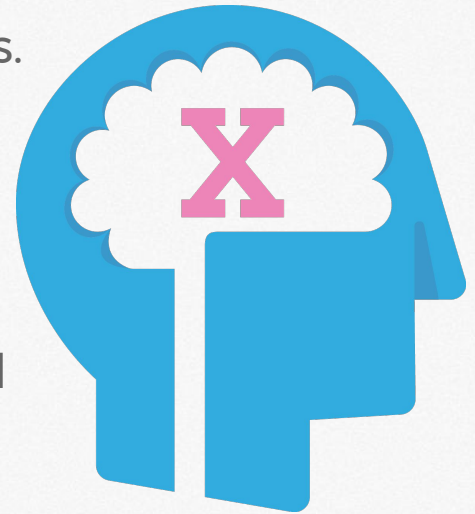
Instructor Dashboard:

Open Responses

UNITS	ASSESSMENTS	TOTAL RESPONSES	TRAINING	PEER	SELF	STAFF	FINAL GRADE RECEIVED
2	2	318	131	45	3	0	136

ORA Considerations

- Put a sample rubric or learning step before ORAs.
- When setting deadlines, **give learners plenty of time** to complete peer reviews.
- **Position peer reviews near start** of a course.
- Try **not** to put a peer-graded ORA in a self-paced course, especially near the end.



Hints and Feedback

- Enable learner success
- Provide instant feedback for correct, or incorrect answers
- Can also provide compound feedback for multiple correct/incorrect answers

Multiple Choice with Hints and Feedback

1 point possible (graded)

Which of the following is a vegetable?

apple

pumpkin **×**

potato

tomato

Answer

Incorrect: A pumpkin is the fertilized ovary of a squash plant and contains seeds, so it is a fruit.

Submit

You have used 1 of 3 attempts

?
Hint

Save

Reset

Show Answer

× Incorrect (0/1 point)

Drag 'n Drop

New version is accessible!

How to build it:

1. Define assessment question.
2. Define background and “zone” (a.k.a. target) areas.
3. Define draggable items.


The screenshot shows a user interface for a drag-and-drop assessment. On the left, labels with lines pointing to specific parts of the interface are: 'Problem title' (pointing to the title), 'Problem heading' (pointing to the 'Problem' heading), 'Problem text' (pointing to the instructions), 'Draggable items' (pointing to the 'Peach', 'Orange', and 'Apple' buttons), 'Background image' (pointing to the area containing the fruit photos), and 'Introductory feedback' (pointing to the 'Feedback' section).

Problem title — MATCH THE FRUITS WITH THEIR NAMES

Problem heading — Problem

Problem text — This problem shows pictures of two different types of fruit. Drag the labels onto the pictures to identify each fruit. You will not need all of the labels.

Draggable items — Peach Orange Apple

Background image — 

Introductory feedback — **Feedback**
Drag the fruit names onto the matching pictures of fruit.

Q&A

