

Google™



# GWT + UI Designer: Enterprise Web UIs made easy

Eric Clayberg  
May 11, 2011

Hashtags: [#io2011](#) [#DevTools](#)

Feedback: <http://goo.gl/qWIni>

# Agenda

- Introduction
- UI Designer Basics
- Basic UI Designer Demo
- Key UI Designer Features
- Advanced UI Designer Demo
- Wrap-Up
- Q & A

# Introduction

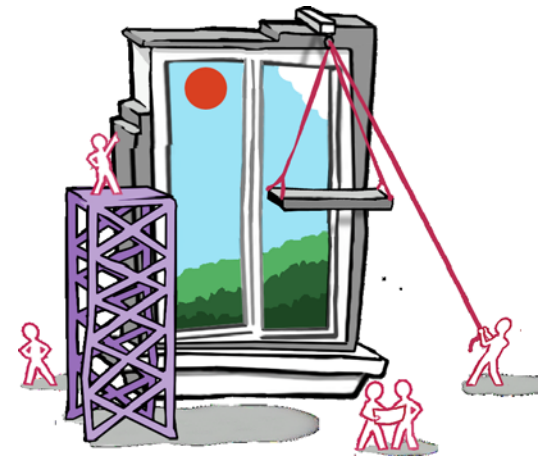
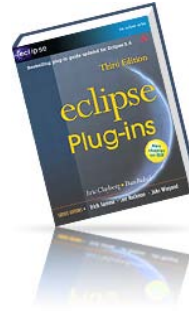
Who am I and what is the UI Designer?



# Introduction

## Some useful background

- Eric Clayberg
  - Software Engineering Manager, Developer Tools
  - Formerly with Instantiations, a Java/Eclipse tool maker acquired by Google in 2010
  - Co-author of *Eclipse Plug-ins*
  - Contact at [clayberg@google.com](mailto:clayberg@google.com)
- GWT Designer
  - Created by Instantiations in 2006
  - Acquired by Google in 2010 and released as free
  - Integrated into **Google Plug-in for Eclipse (GPE)** v2.2 as the UI Designer
  - Full version includes support for Ext-GWT (GXT) and SmartGWT (GPE embedded version does not)
  - Based on the WindowBuilder open source project at Eclipse.org



# UI Designer Basics

Getting started with the UI Designer

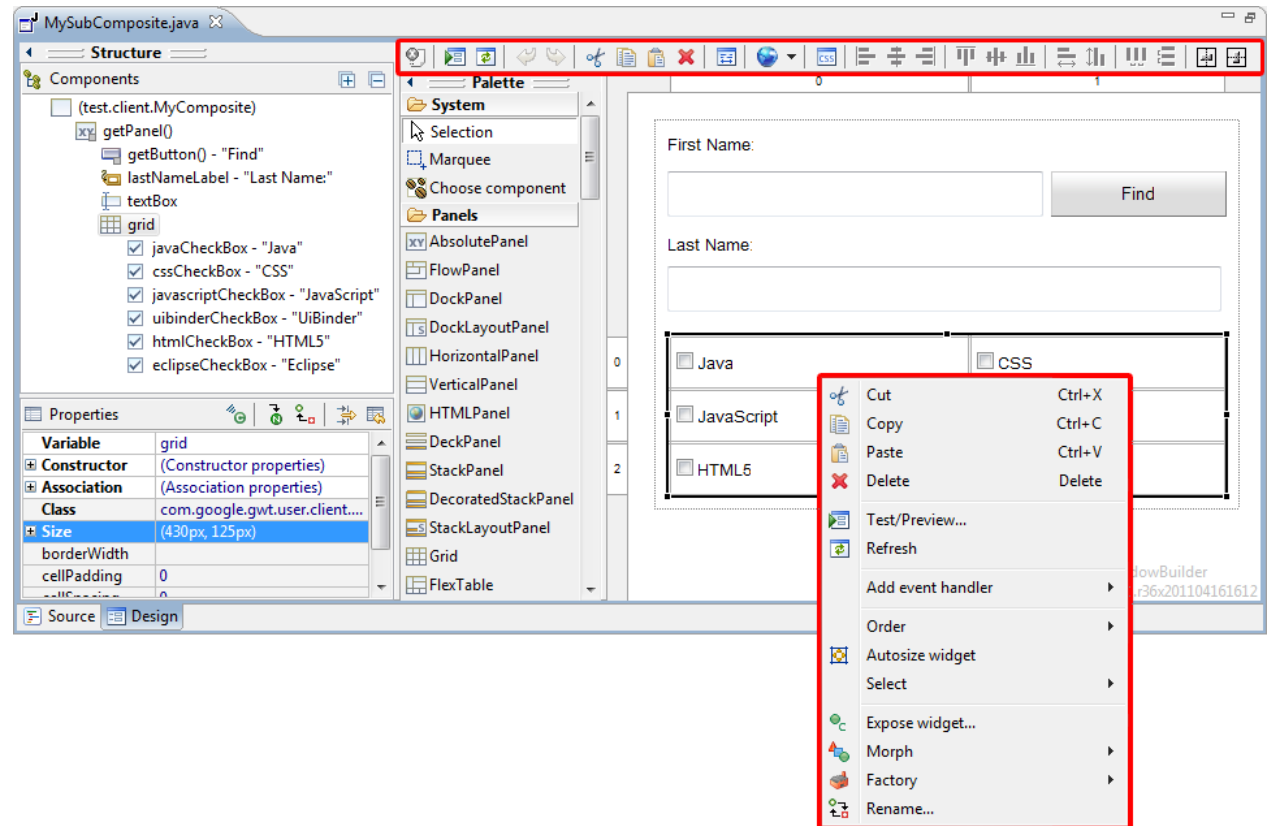


11

# UI Designer User Interface

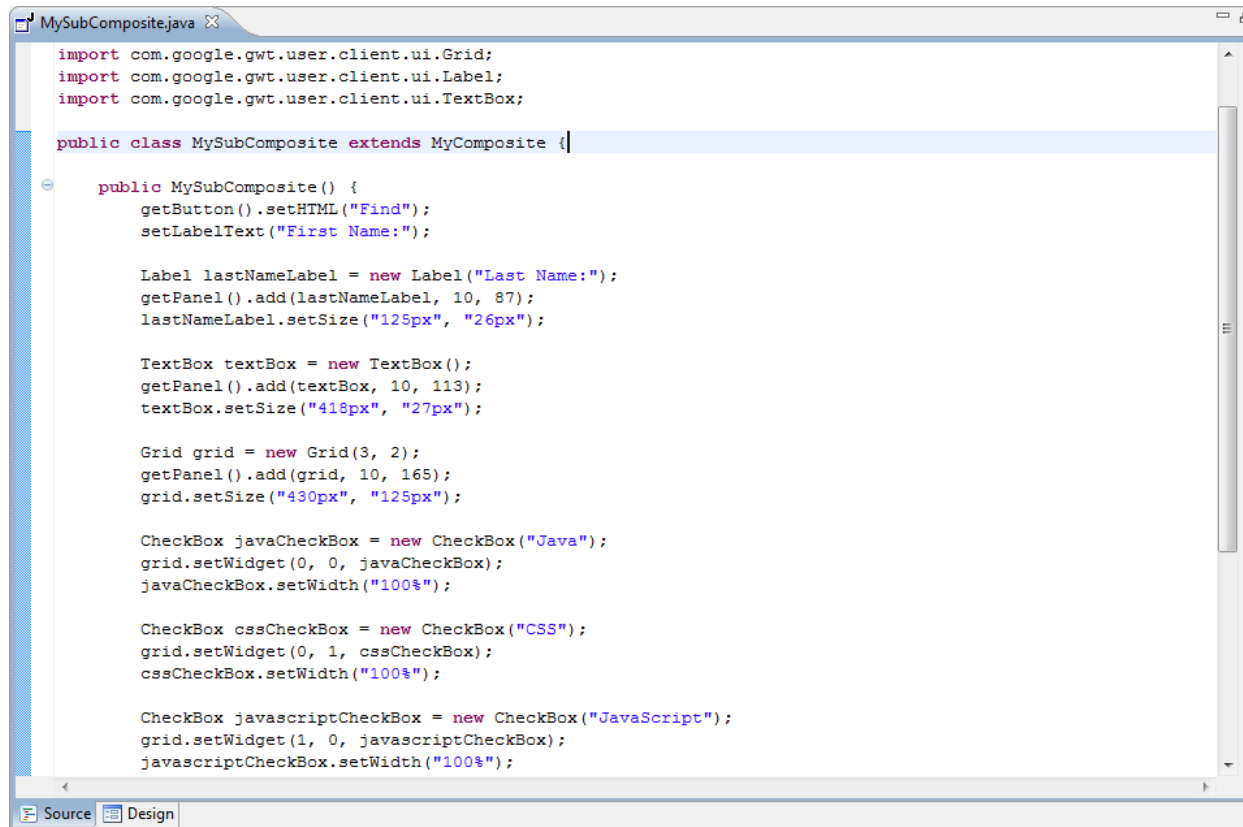
UI Designer is composed of the following major components

- Source View
- Design View
- Component Tree
- Property Pane
- Palette
- Wizards
- Toolbars & Context Menus



# Source View

- Separate tabs for Source and Design view
- Both views visible in a top/bottom or left/right configuration



```
MySubComposite.java
import com.google.gwt.user.client.ui.Grid;
import com.google.gwt.user.client.ui.Label;
import com.google.gwt.user.client.ui.TextBox;

public class MySubComposite extends MyComposite {

    public MySubComposite() {
        getButton().setHTML("Find");
        setLabelText("First Name:");

        Label lastNameLabel = new Label("Last Name:");
        getPanel().add(lastNameLabel, 10, 87);
        lastNameLabel.setSize("125px", "26px");

        TextBox textBox = new TextBox();
        getPanel().add(textBox, 10, 113);
        textBox.setSize("418px", "27px");

        Grid grid = new Grid(3, 2);
        getPanel().add(grid, 10, 165);
        grid.setSize("430px", "125px");

        CheckBox javaCheckBox = new CheckBox("Java");
        grid.setWidget(0, 0, javaCheckBox);
        javaCheckBox.setWidth("100%");

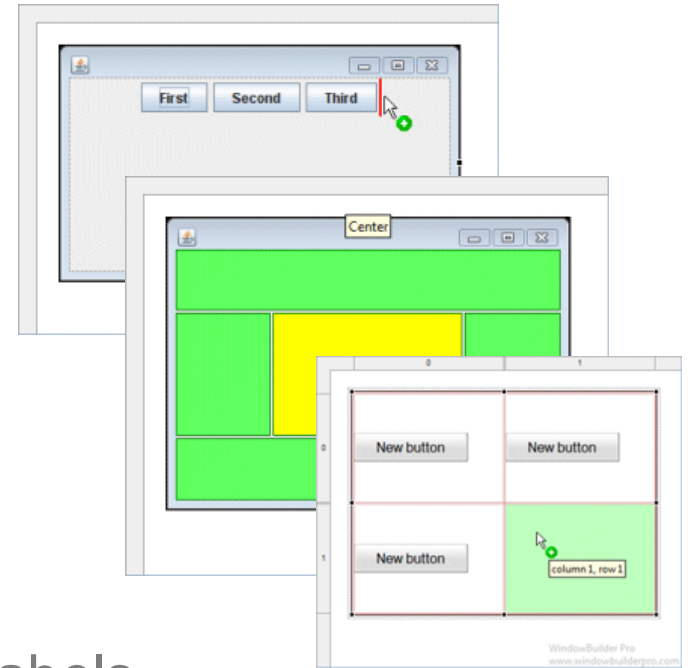
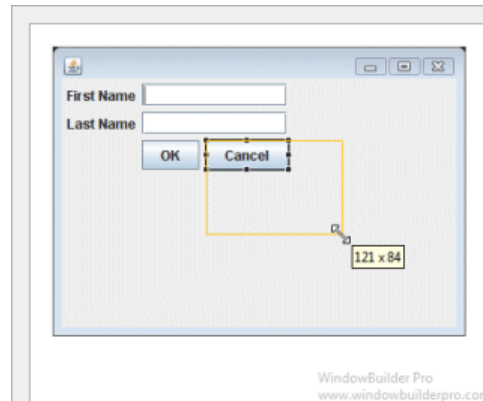
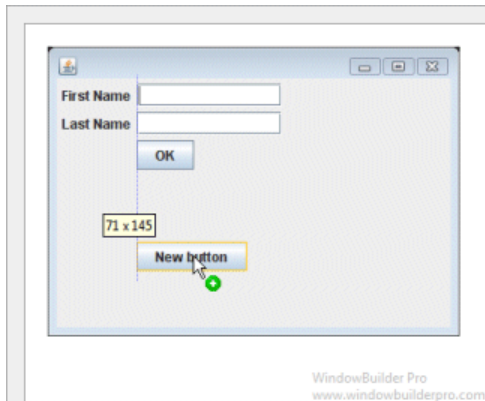
        CheckBox cssCheckBox = new CheckBox("CSS");
        grid.setWidget(0, 1, cssCheckBox);
        cssCheckBox.setWidth("100%");

        CheckBox javascriptCheckBox = new CheckBox("JavaScript");
        grid.setWidget(1, 0, javascriptCheckBox);
        javascriptCheckBox.setWidth("100%");
    }
}
```

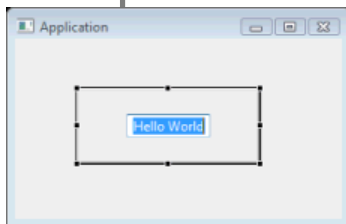


# Design View

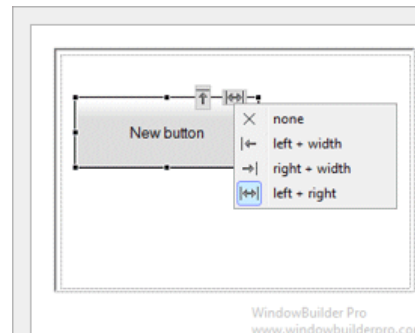
- Each layout has its own UI model
- Move & resize components visually



- Hit spacebar to direct edit component labels

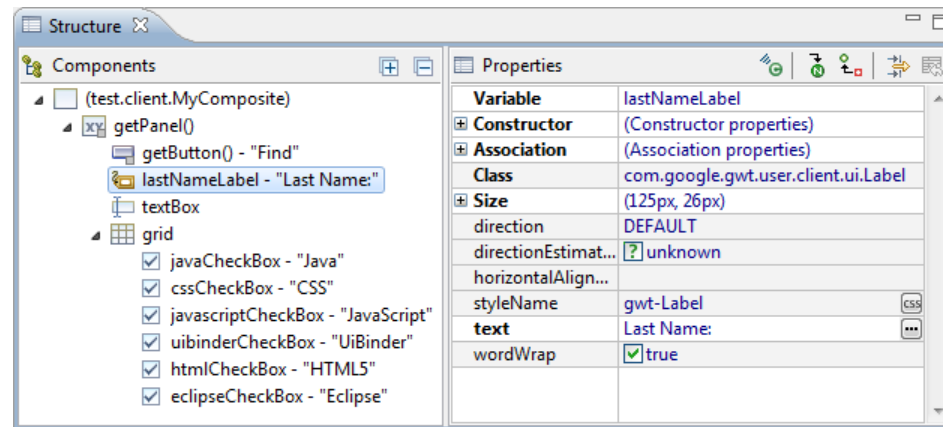
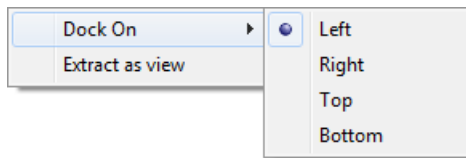
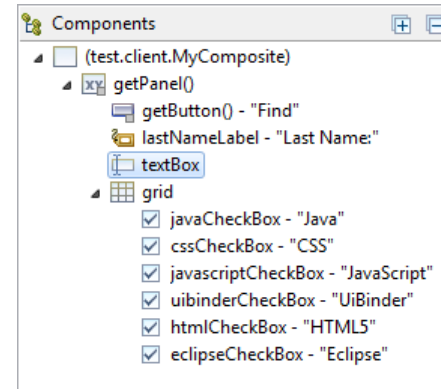


- Select attachments using popup context menu




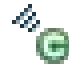


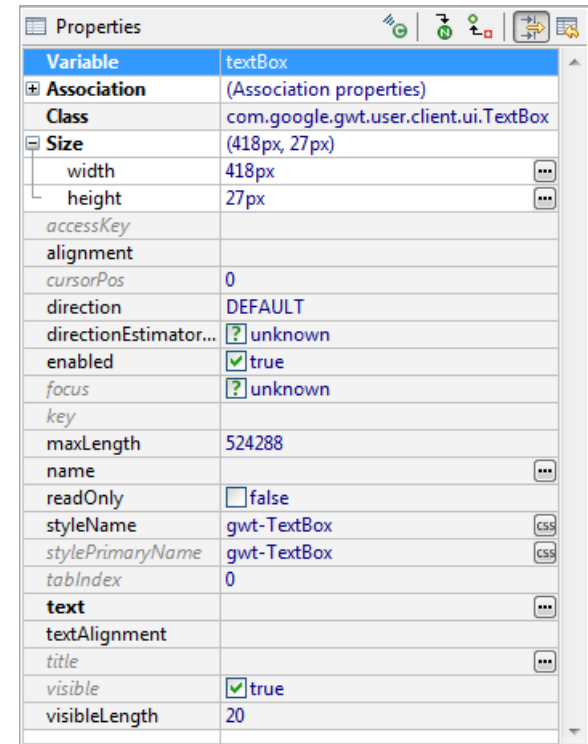
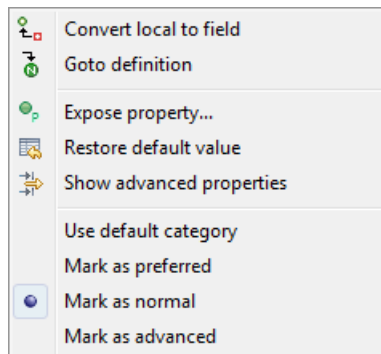
# Component Tree

- Hierarchical view of all components
- Displays inst var name of component
- Shows text of component
- Right-click to cut/copy/paste widgets
- Use drag/drop to reorder and nest
- Dock to editor or open as standalone view



# Properties View

- Supports all common properties
- Hide & Show advanced properties 
- Highlight important properties
- Convert local/field 
- Open definition 
- Show events 
- Mark preferred & advanced properties

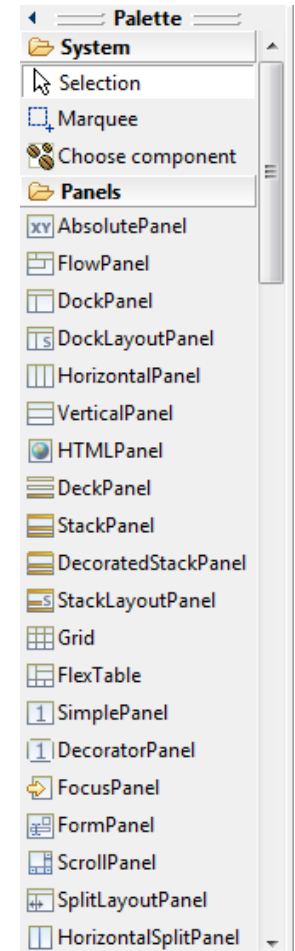
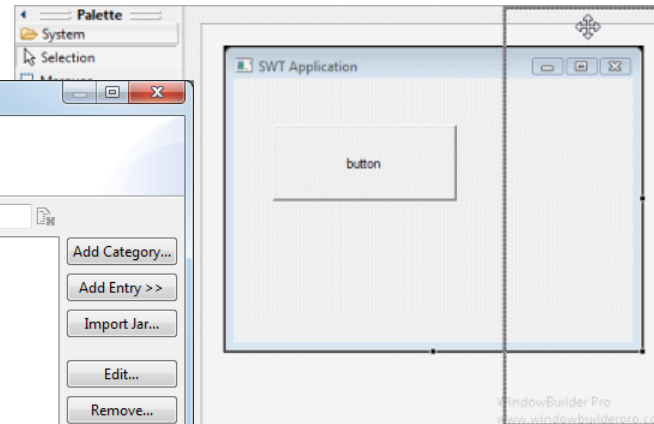
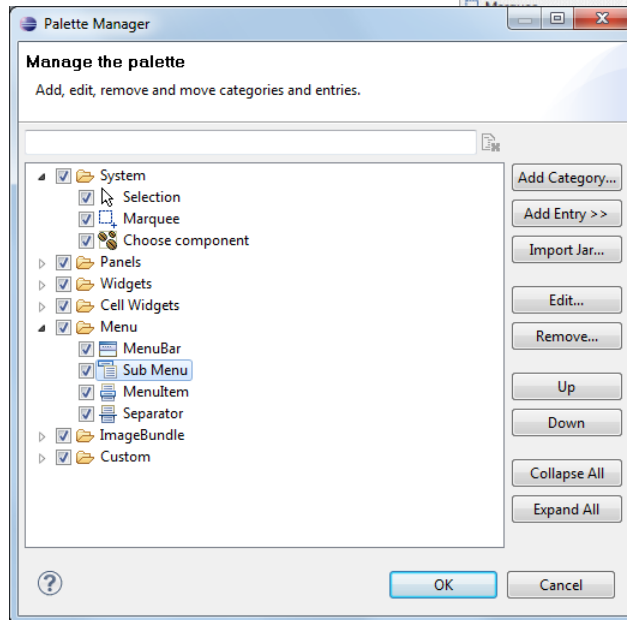
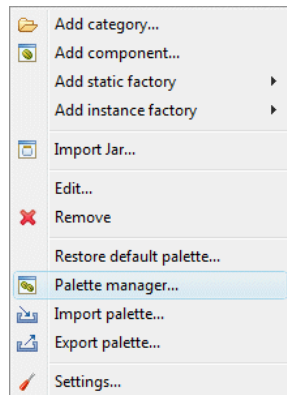


Properties

Variable	textBox
Association	(Association properties)
Class	com.google.gwt.user.client.ui.TextBox
Size	(418px, 27px)
width	418px
height	27px
accessKey	
alignment	
cursorPos	0
direction	DEFAULT
directionEstimator...	? unknown
enabled	<input checked="" type="checkbox"/> true
focus	? unknown
key	
maxLength	524288
name	
readOnly	<input type="checkbox"/> false
styleName	gwt-TextBox
stylePrimaryName	gwt-TextBox
tabIndex	0
text	
textAlignment	
title	
visible	<input checked="" type="checkbox"/> true
visibleLength	20

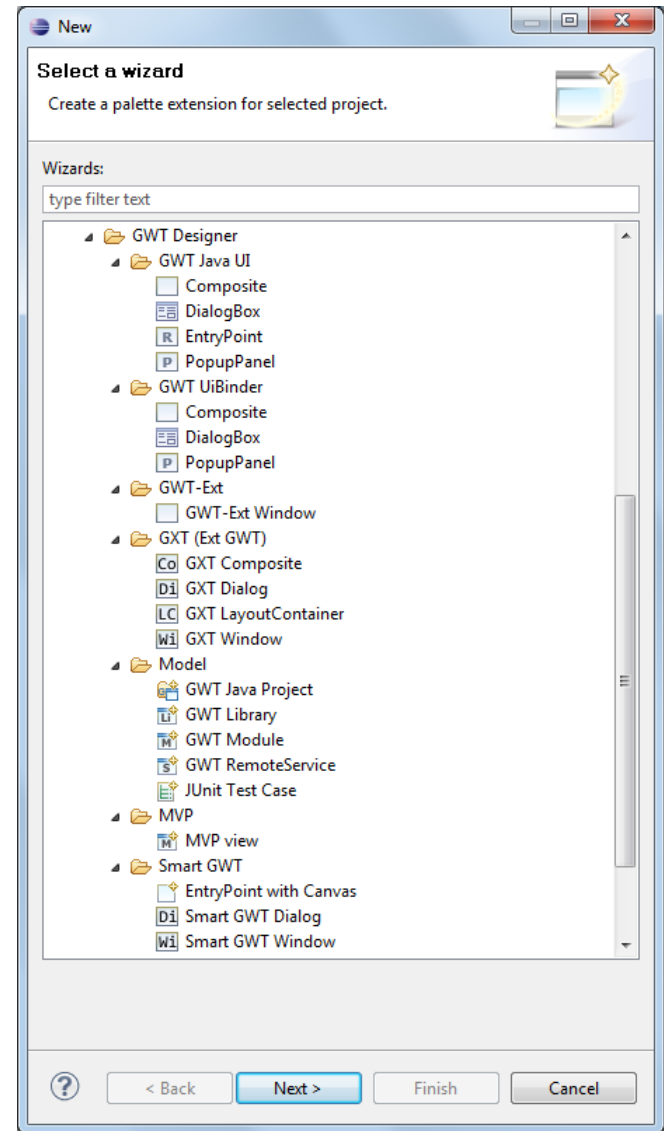
# Palette

- Single select or marquee select
- Choose component to select arbitrary components
- Special palettes for GXT and SmartGWT
- Palette can dock to editor or open as standalone view
- Fully customizable by user



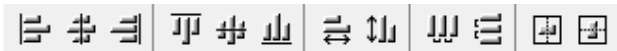
# Wizards

- Full version contains dozens of new UI wizards
- Select File > New > Other > WindowBuilder > GWT Designer
- Or use drop down tool button menu
- Dozens of templates for creating GWT Java, UiBinder, MVP, GXT and SmartGWT components



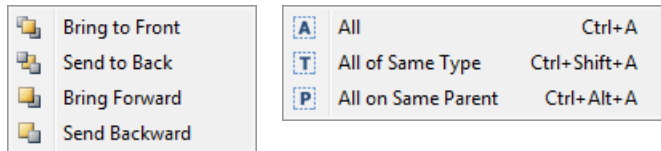
# Toolbars & Context Menus

- Cut, Copy & Paste components
- Align & Distribute components



- Delete components 

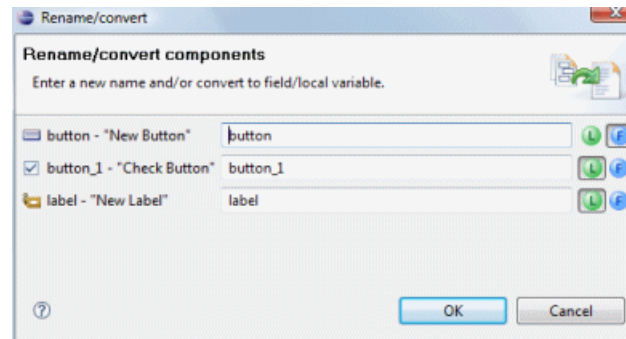
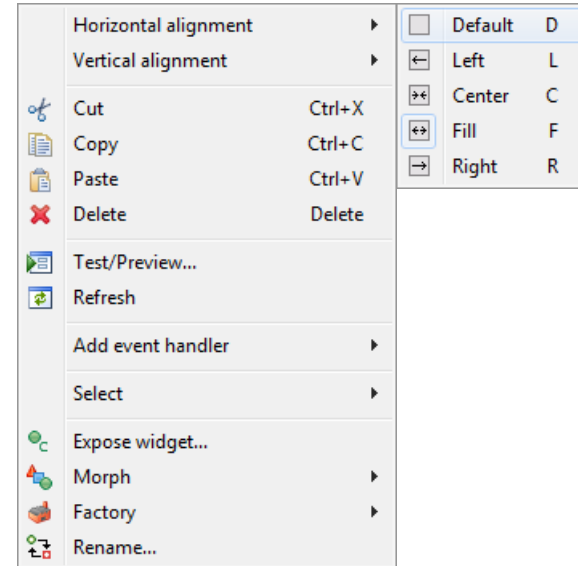
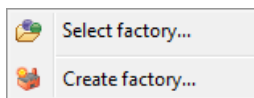
- Order & Select components



- Rename components 

- Add event handlers

- Morphing & factories



# UI Designer Comparison

GPE Embedded vs. Full Eclipse versions

	GPE Embedded Version	Full Eclipse Version
Standard GWT widgets & panels	✓	✓
GWT Java & UiBinder	✓	✓
Ext-GWT (GXT) & SmartGWT		✓
Extra UI wizards		✓
Customization Options	✓	✓ ✓ ✓
<b>FREE!!</b>	✓	✓

# Basic UI Designer Demo

A quick demo of basic UI Designer features





# Key UI Designer Features

Powerful features for creating Web UIs



11

# Key UI Designer Features

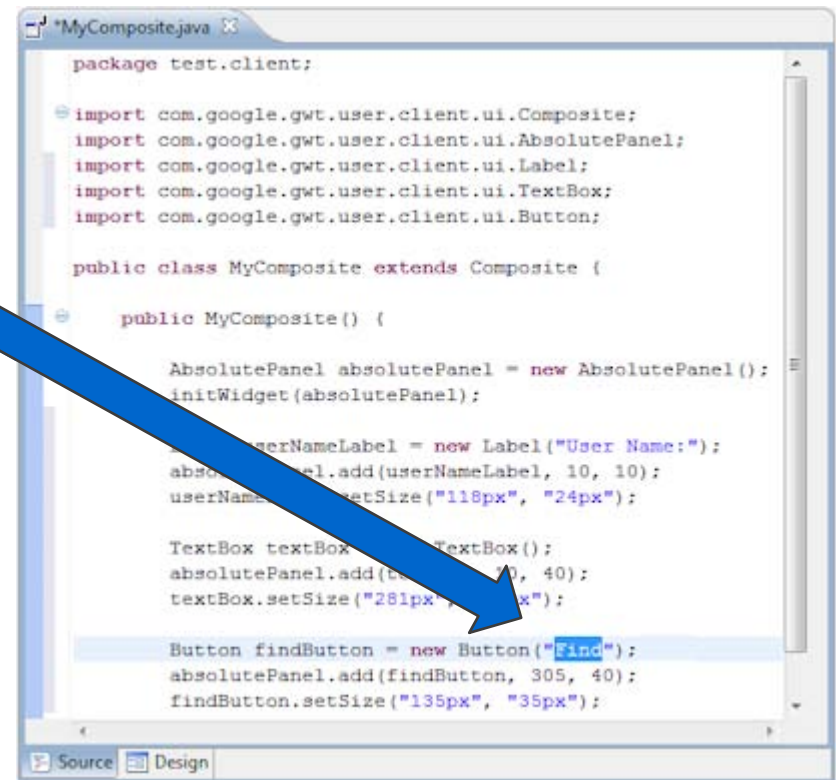
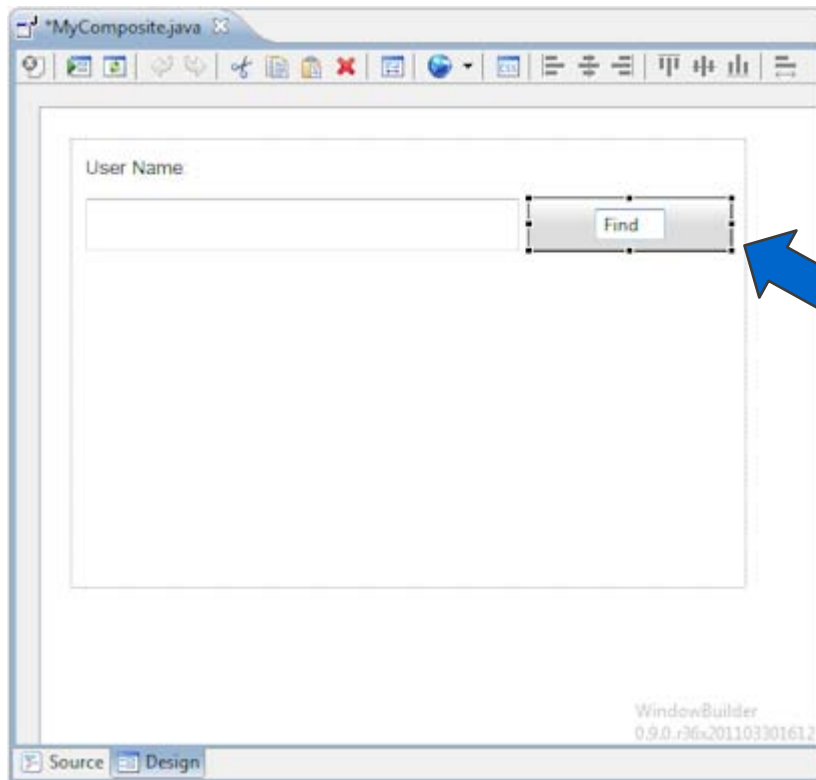
UI Designer supports many state-of-the-art features

- WYSIWYG & Bi-directional Code Generation
- Powerful & Flexible Code Parser
- Read & Write Any Format or Style
- Internationalization
- Visual Inheritance
- UI Factories
- Morphing
- Widgets & Panels
- Graphical Menu Editing



# WYSIWYG & Bi-directional Code Generation

- WYSIWYG editing in design view
- Bi-directional Code Generation
- Micro edits result in smallest possible code change



# Powerful & Flexible Code Parser

- Can parse its own code and code written by hand
- No protected code blocks
- Understands data flow
- Ignores & preserves non-UI code
- Refactoring friendly and resilient to hand-made changes
- One-to-one relationship between UI and Java/XML code
- No intermediate metadata file to get lost or out of sync

```
MyComposite.java X
package test.client;

import com.google.gwt.user.client.ui.Composite;
import com.google.gwt.user.client.ui.AbsolutePanel;
import com.google.gwt.user.client.ui.Label;
import com.google.gwt.user.client.ui.TextBox;
import com.google.gwt.user.client.ui.Button;

public class MyComposite extends Composite {

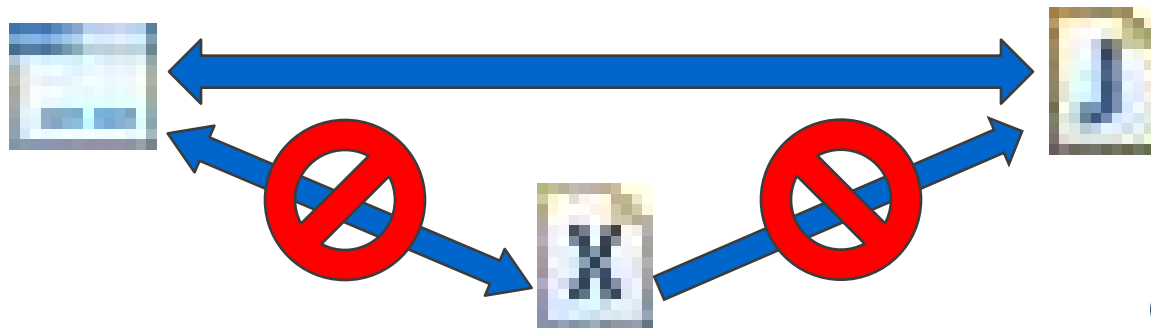
    public MyComposite() {

        AbsolutePanel absolutePanel = new AbsolutePanel();
        initWidget(absolutePanel);

        Label userNameLabel = new Label("User Name:");
        absolutePanel.add(userNameLabel, 10, 10);
        userNameLabel.setSize("118px", "24px");

        TextBox textBox = new TextBox();
        absolutePanel.add(textBox, 10, 40);
        textBox.setSize("281px", "27px");

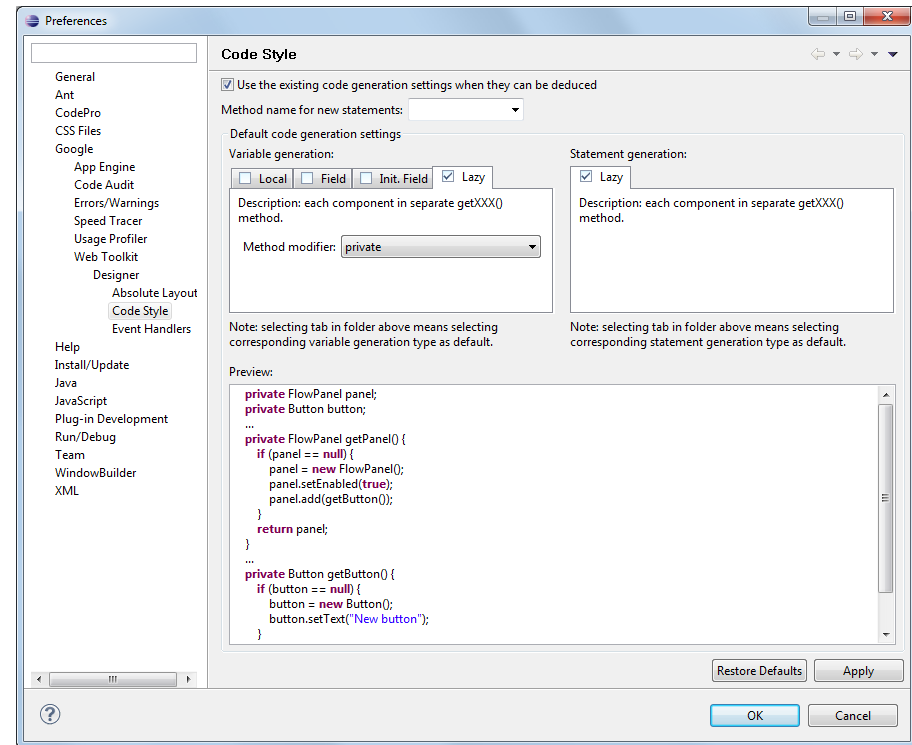
        Button findButton = new Button("Find");
        absolutePanel.add(findButton, 305, 40);
        findButton.setSize("135px", "35px");
    }
}
```



# Read & Write Any Format or Style

Window > Preferences > Google > Web Toolkit > Designer > Code Style

- Local variables vs. Fields
- Flat vs. Block
- Initialized fields
- Lazy declaration



```
...  
FlowPanel panel = new FlowPanel();  
panel.setEnabled(true);  
  
Button button = new Button();  
button.setText("Add customer...");  
panel.add(button);  
...
```

```
private FlowPanel panel;  
private Button button;  
...  
private FlowPanel getPanel() {  
    if (panel == null) {  
        panel = new FlowPanel();  
        panel.setEnabled(true);  
        panel.add(getButton());  
    }  
    return panel;  
}  
...  
private Button getButton() {  
    if (button == null) {  
        button = new Button();  
        button.setText("New button");  
    }  
    return button;  
}
```

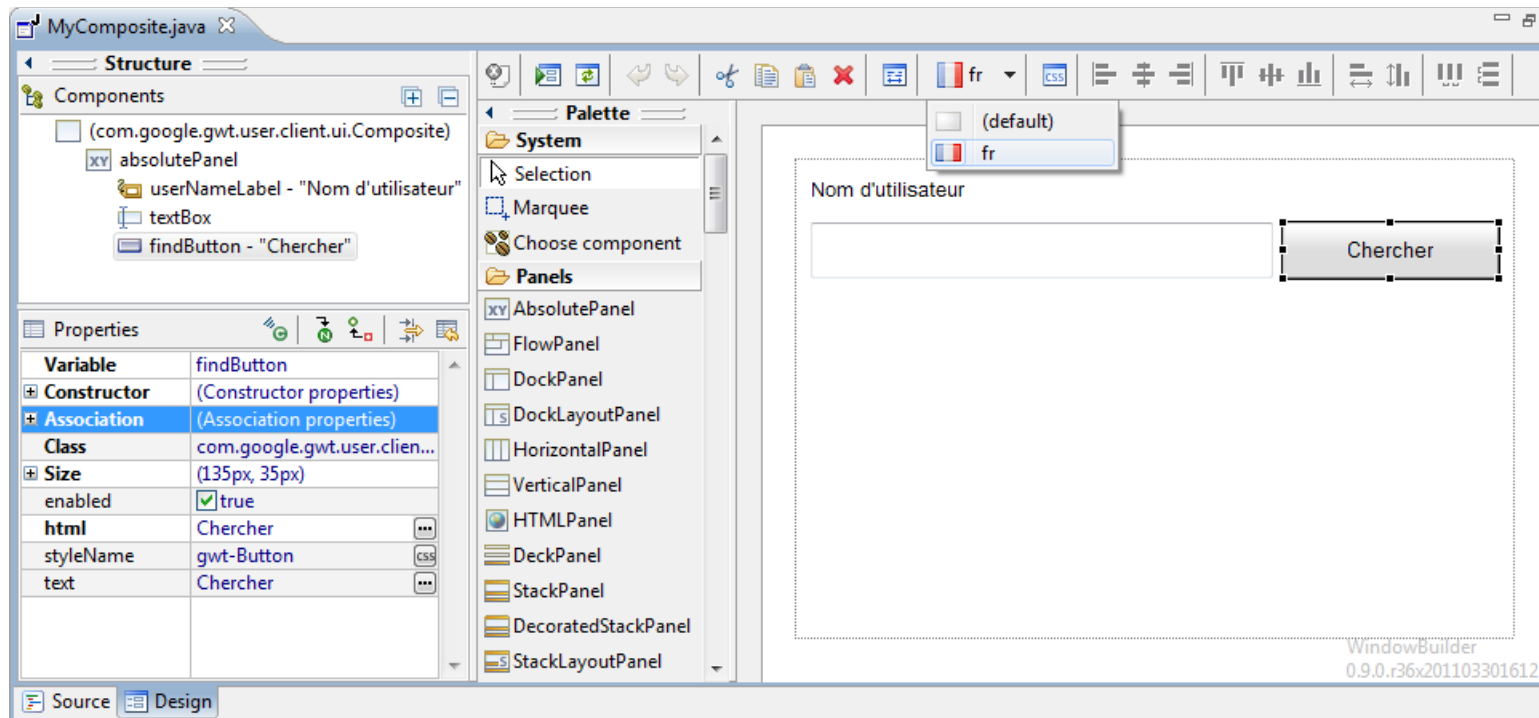
```
{  
    FlowPanel panel = new FlowPanel();  
    panel.setEnabled(true);  
    {  
        Button button = new Button();  
        button.setText("Add customer...");  
        panel.add(button);  
    }  
    ...  
}
```

```
private final FlowPanel panel = new FlowPanel();  
private final Button button = new Button();  
...  
panel.setEnabled(true);  
  
panel.add(button);  
button.setText("Add customer...");  
...
```

```
private FlowPanel panel;  
private Button button;  
...  
panel = new FlowPanel();  
panel.setEnabled(true);  
  
button = new Button();  
button.setText("Add customer...");  
panel.add(button);  
...
```

# Internationalization

Offers easy-to-use Internationalization and Localization tools



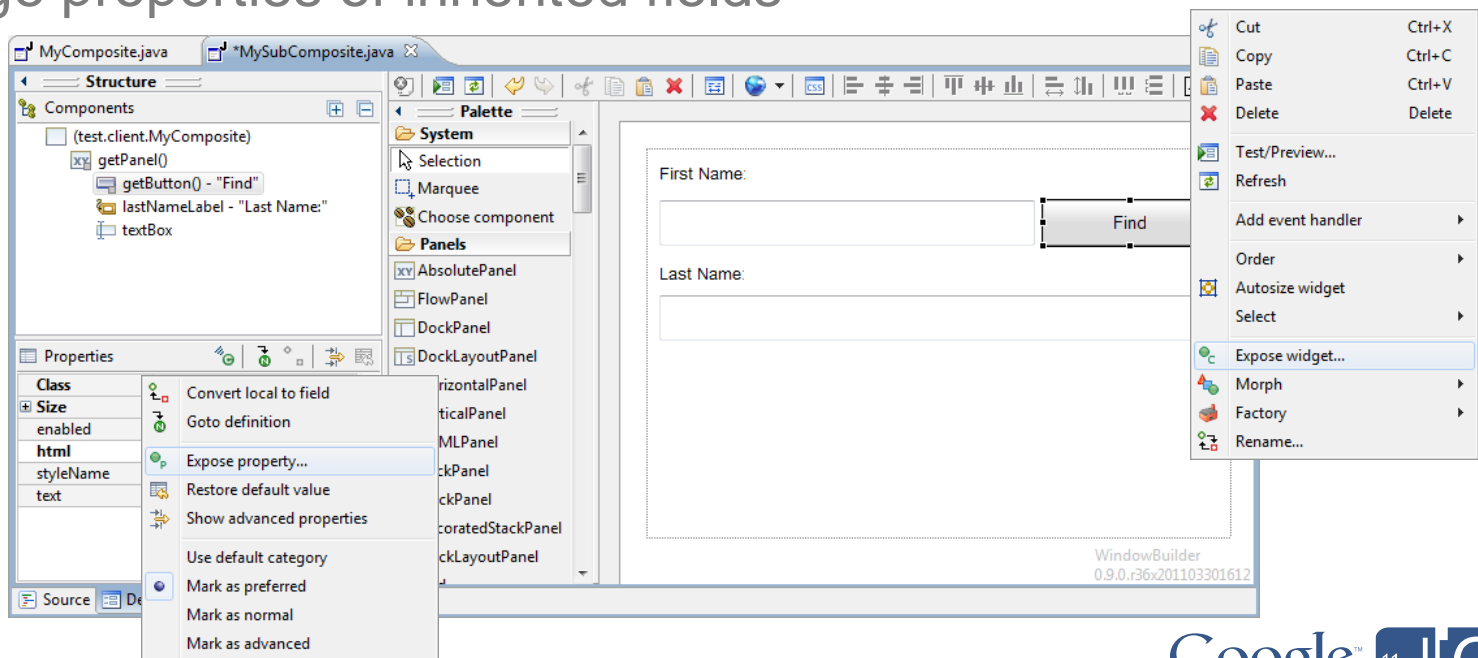
```
AppConstants.properties
#GWT variable: CONSTANTS
findButton_html=Search
userNameLabel_text=User Name:
```

```
AppConstants_fr.properties
#GWT variable: CONSTANTS
findButton_html=Chercher
userNameLabel_text=Nom d'utilisateur:
```

# Visual Inheritance

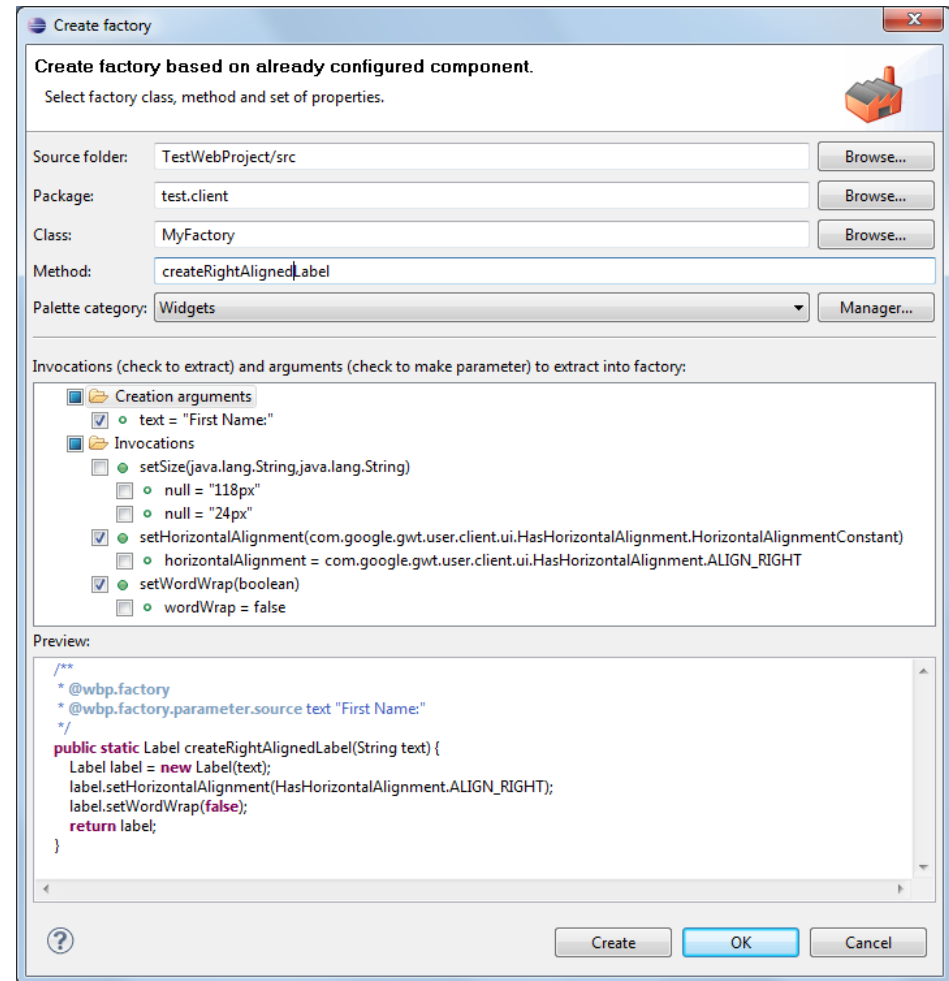
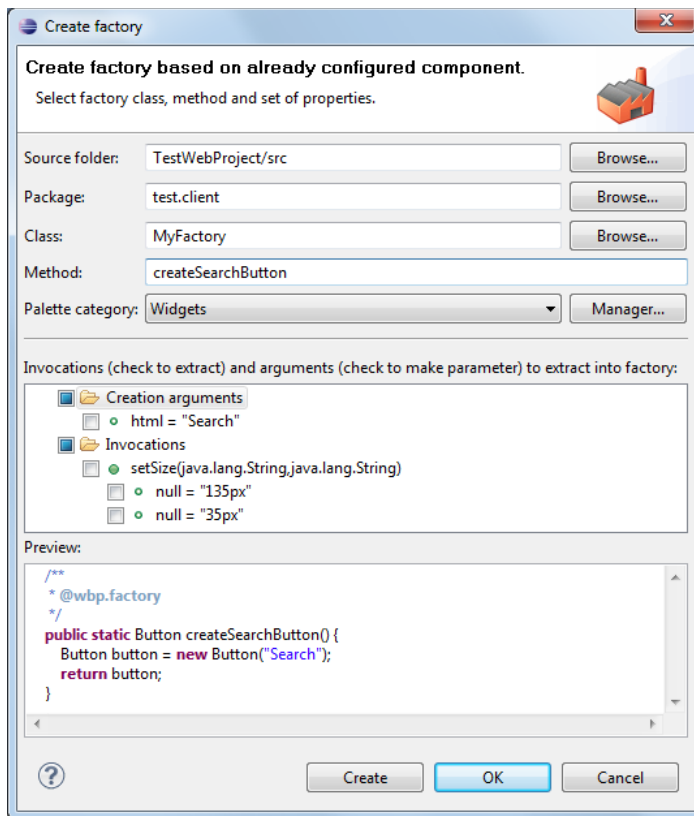
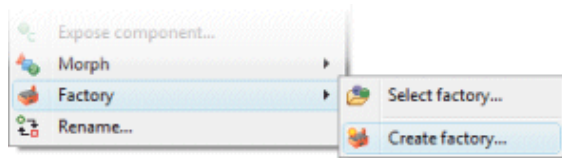
Provides visual inheritance so that code features can be easily inherited from a parent – child hierarchy

- Easily expose fields and properties
- Add components & event handlers to inherited fields
- Change public properties of inherited components
- Change properties of inherited fields



# UI Factories

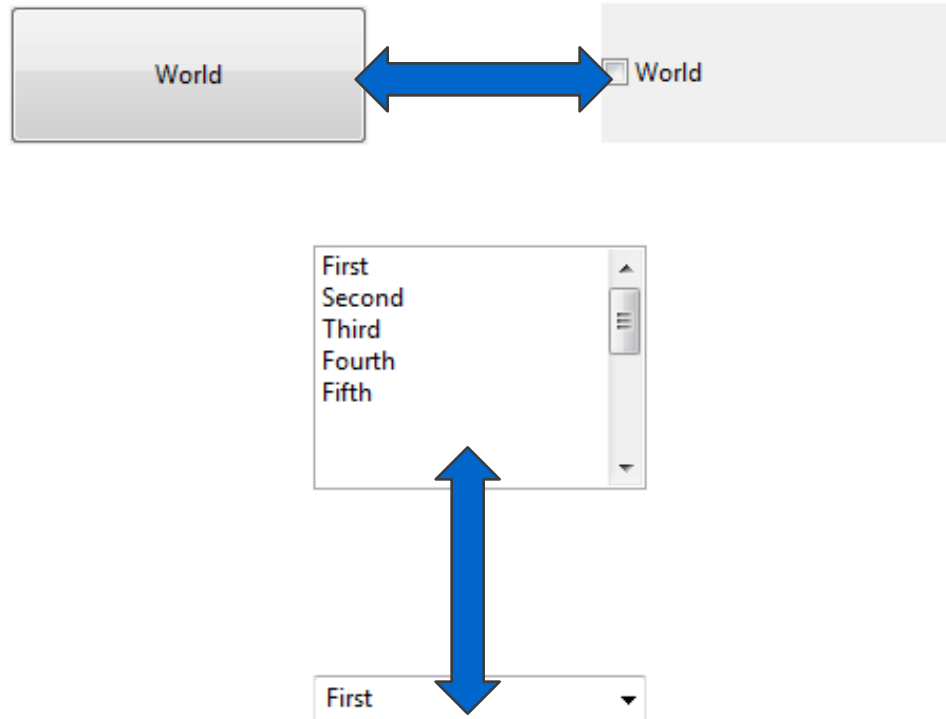
Support for UI Factories and reusable customized GUI elements





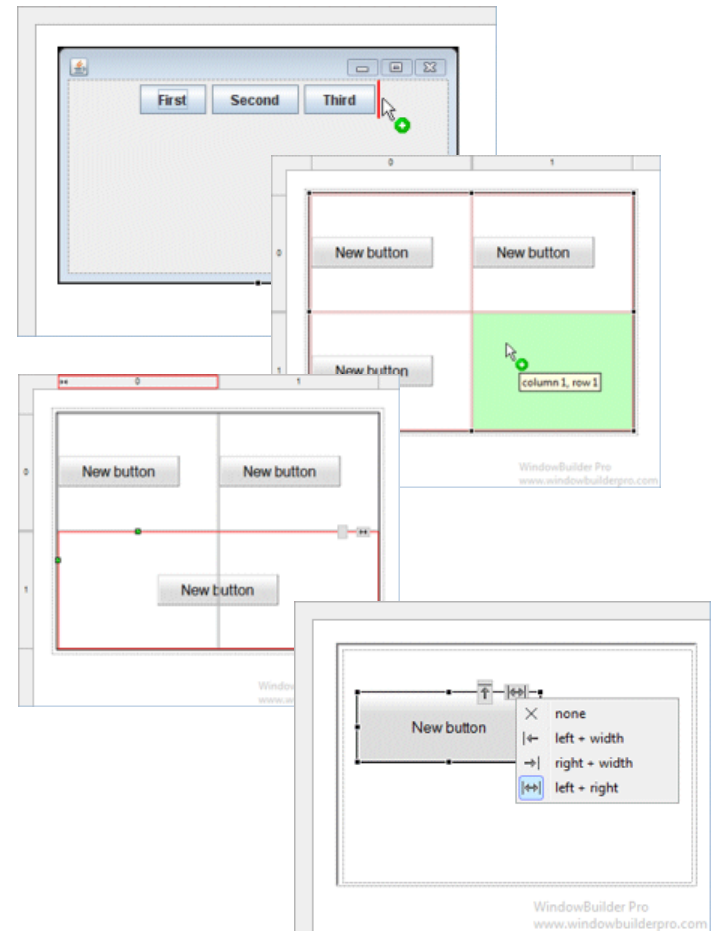
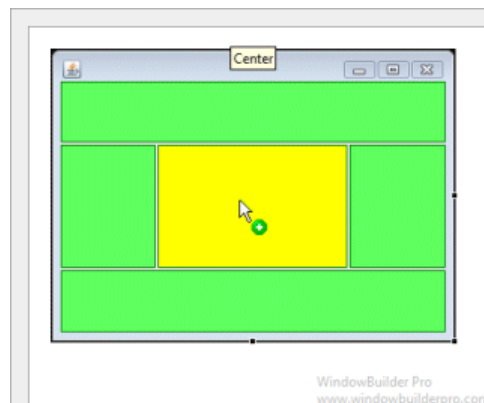
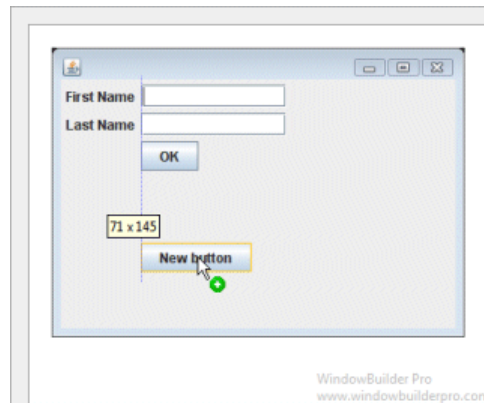
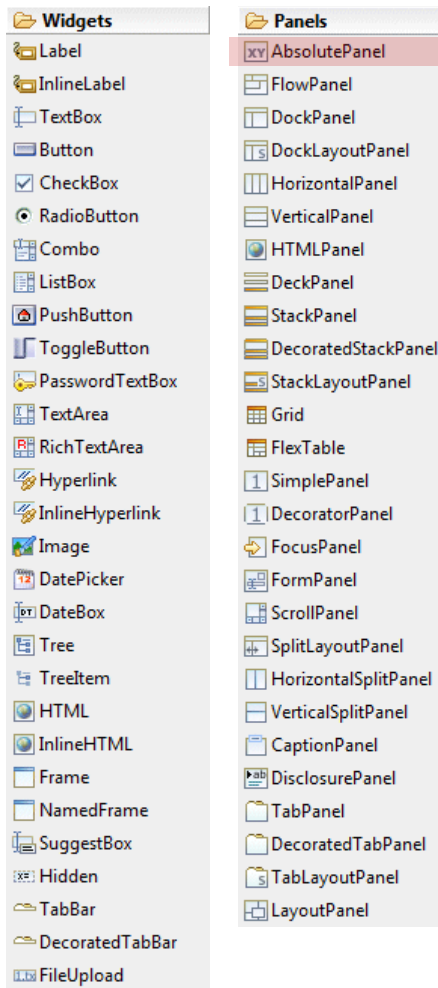
# Morphing

Provides a Morphing tool to easily change one widget type into another



# Widgets & Panels

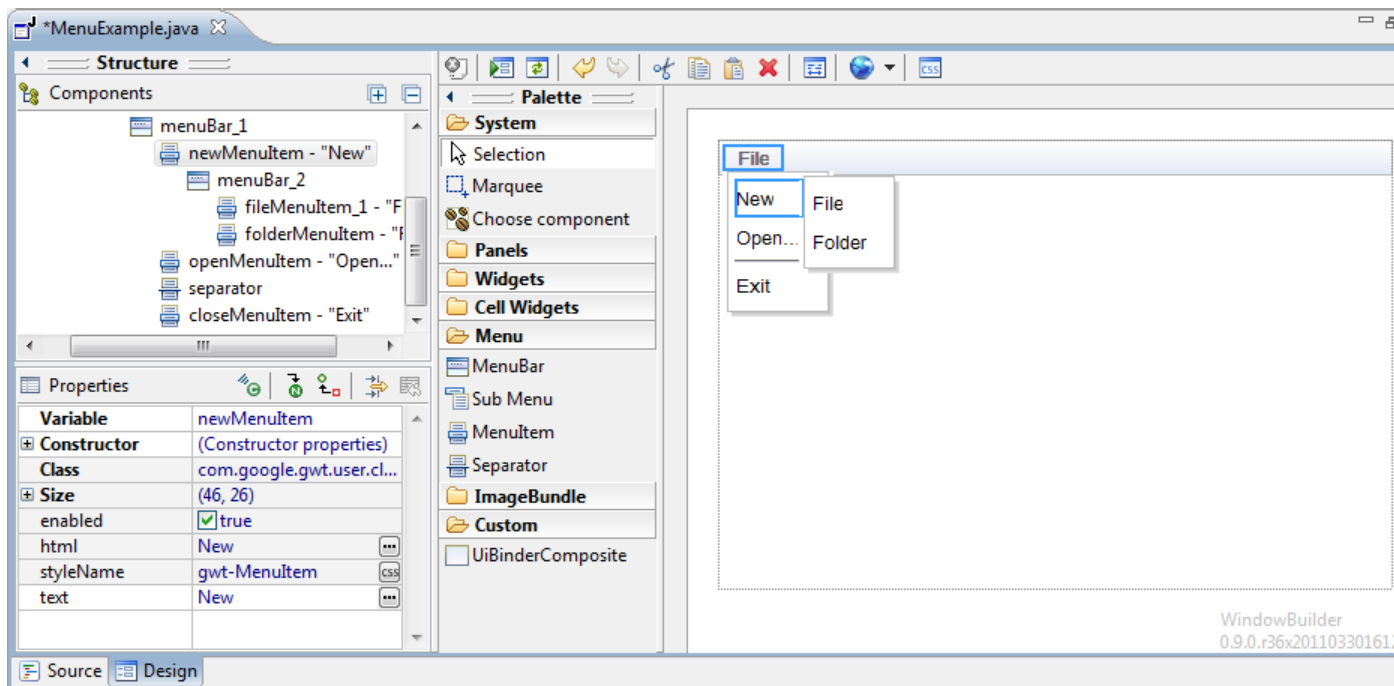
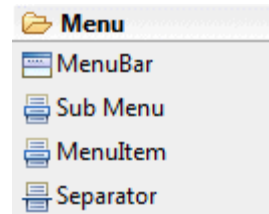
Fully supports all standard widgets and panels as well as select third-party widgets and panels



# Graphical Menu Editing

Supports WYSIWYG Graphical Menu Editing

- Graphical edit menubars and menuitems
- Use drag/drop to rearrange menus
- Direct edit menu labels



# Advanced UI Designer Demo

A quick demo of advanced UI Designer features



# Wrap-Up

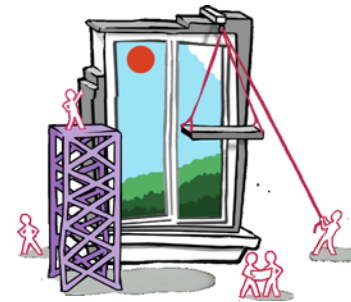
What did we talk about?



# Wrap-Up

What did we talk about?

- Google Web Toolkit – a great way to build Web apps!
- Google Plugin for Eclipse – a great way to build GWT apps!
- UI Designer – a great way to build GWT Web UIs!



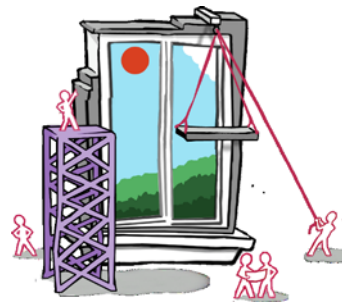
# Q & A

Don't be shy!



# Thank You

- Where to get it:  
<http://code.google.com/webtoolkit/>  
<http://code.google.com/webtoolkit/tools/download-gwt designer/>
- Documentation:  
<http://code.google.com/webtoolkit/tools/gwt designer/>
- Wiki, issue tracker, source:  
<http://code.google.com/p/google-web-toolkit/>
- Official GWT blog:  
<http://google-web-toolkit.blogspot.com/>
- Feedback:  
<http://goo.gl/qWIni>





Google™

