

# Cloudy With A Chance Of Java

## Building Multitenant Java EE Cloud Applications

Jason Lee

Principal Software Engineer, NetSuite, Inc.

# Agenda

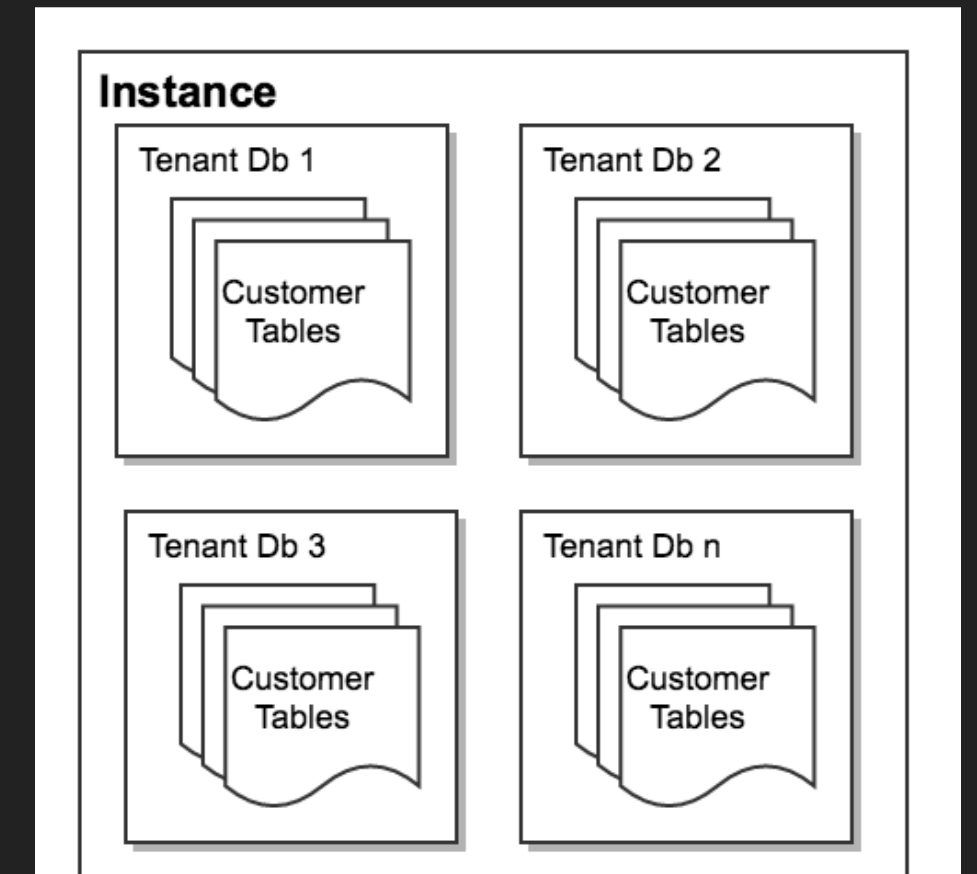
1. Introduction
2. Overview of Strategies
3. Implementations
4. Q&A

# Overview Of Strategies

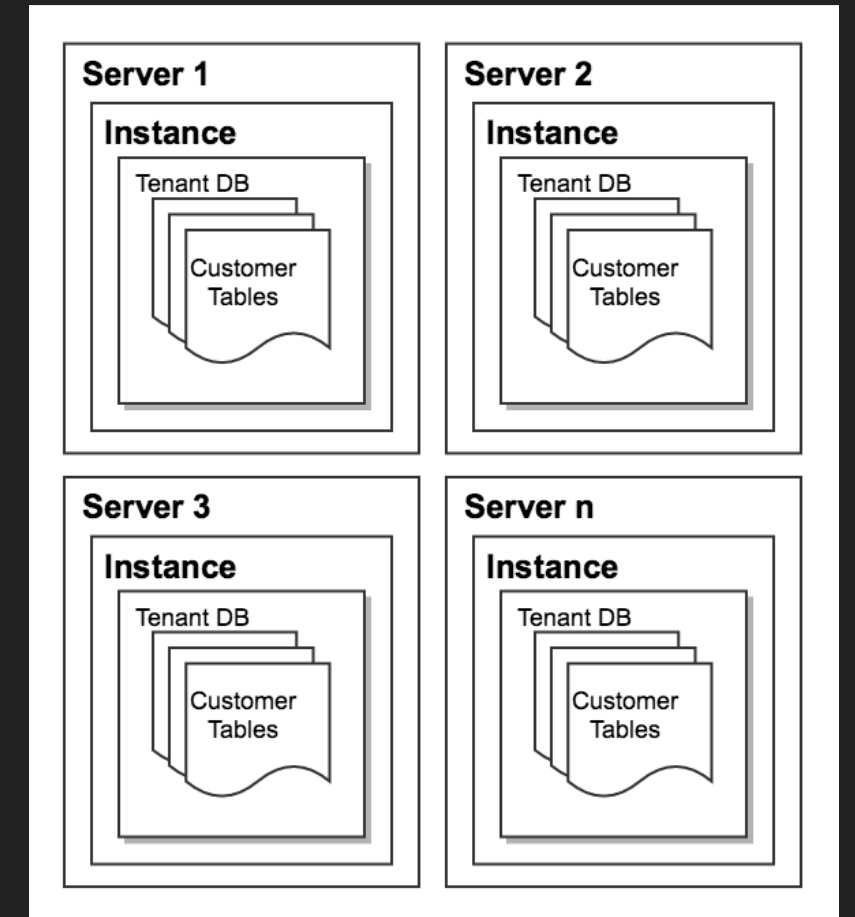
- Separate Databases
- Shared Database, Separate Schemas
- Shared Database, Shared Schema
- Several others possible, not worth mentioning
  - Shared Database, shared schema, separate tables

# Separate Databases

Each tenant has its own copy of the entire database



Each database can be in its own instance, or the databases can share an instance



## Advantages

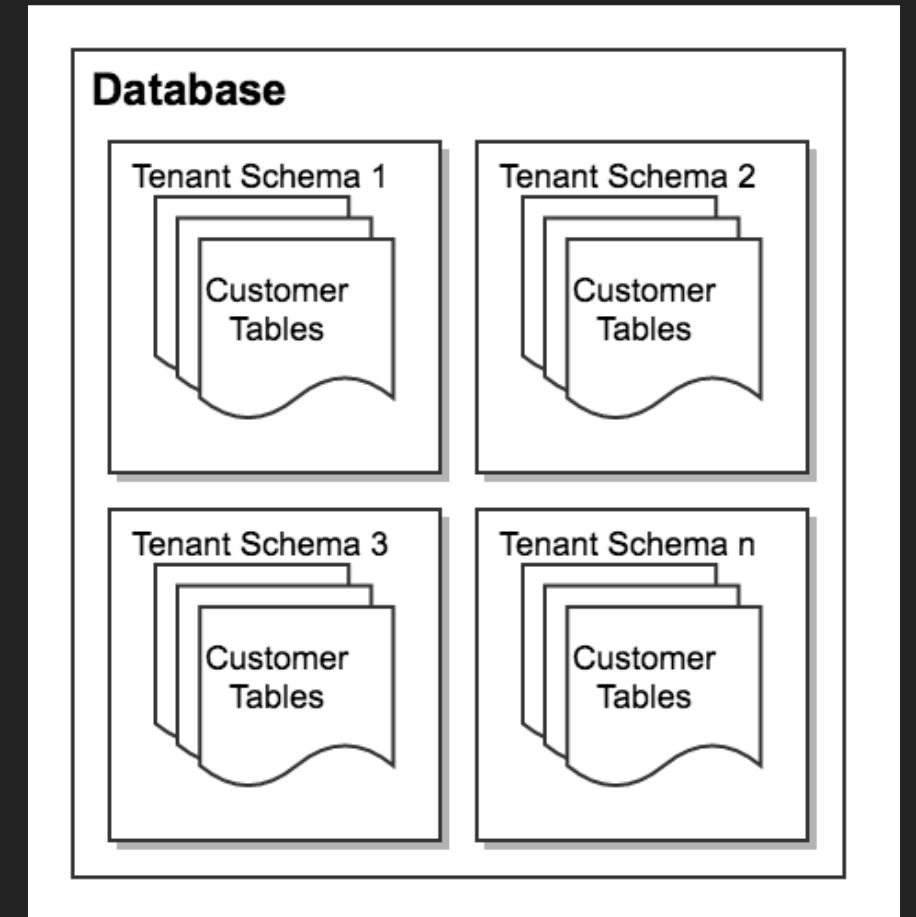
- Customer data is 100% isolated
- Backup/Recovery is simplified

## Disadvantages

- Licensing costs may increase
- Infrastructure costs will almost certainly increase
- Application updates are more difficult

# Shared Database, Separate Schema

Each tenant is stored in the same database, but each gets its own schema



## Advantages

- Customer data is mostly isolated
- Backup/Recovery is simplified
- Licensing costs likely unaffected

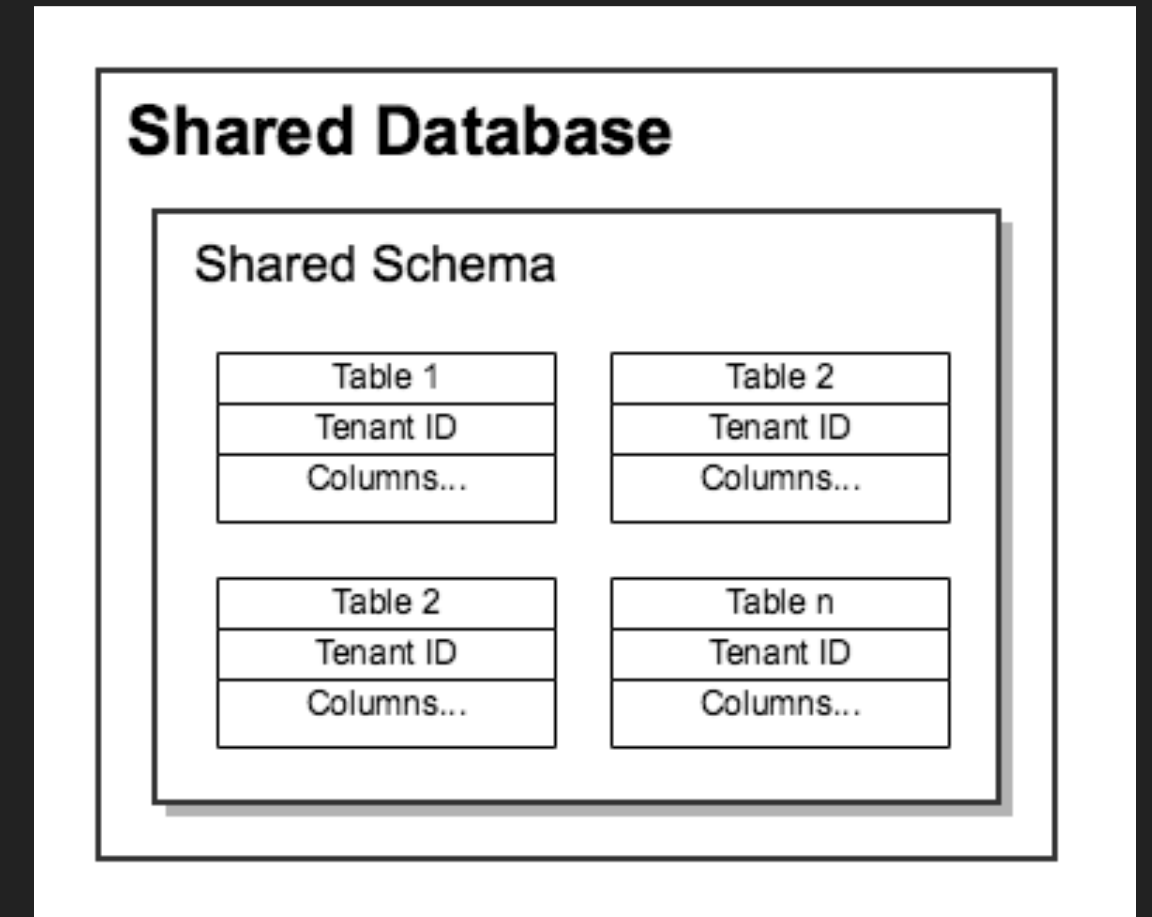
## Disadvantages

- Database and application configuration is more complex
- Application updates are more difficult
- Storage space grows more quickly



# Shared Database, Shared Schema

- Every tenant is in the same database and in the same schema.
- A discriminator field (e.g., tenant\_id, comp\_id) is used to logically separate customer data.
- All customer data is in the same set of tables, so care must be taken not to expose the wrong data to a customer.



# Advantages

- Database configuration is very simple
- Licensing costs likely unaffected
- Application updates are simplified
- Infrastructure costs increase more slowly

# Disadvantages

- Customer data is not physically isolated
- Backup/restore is much more difficult
- Database and application configuration can be more complex

# Application Approaches

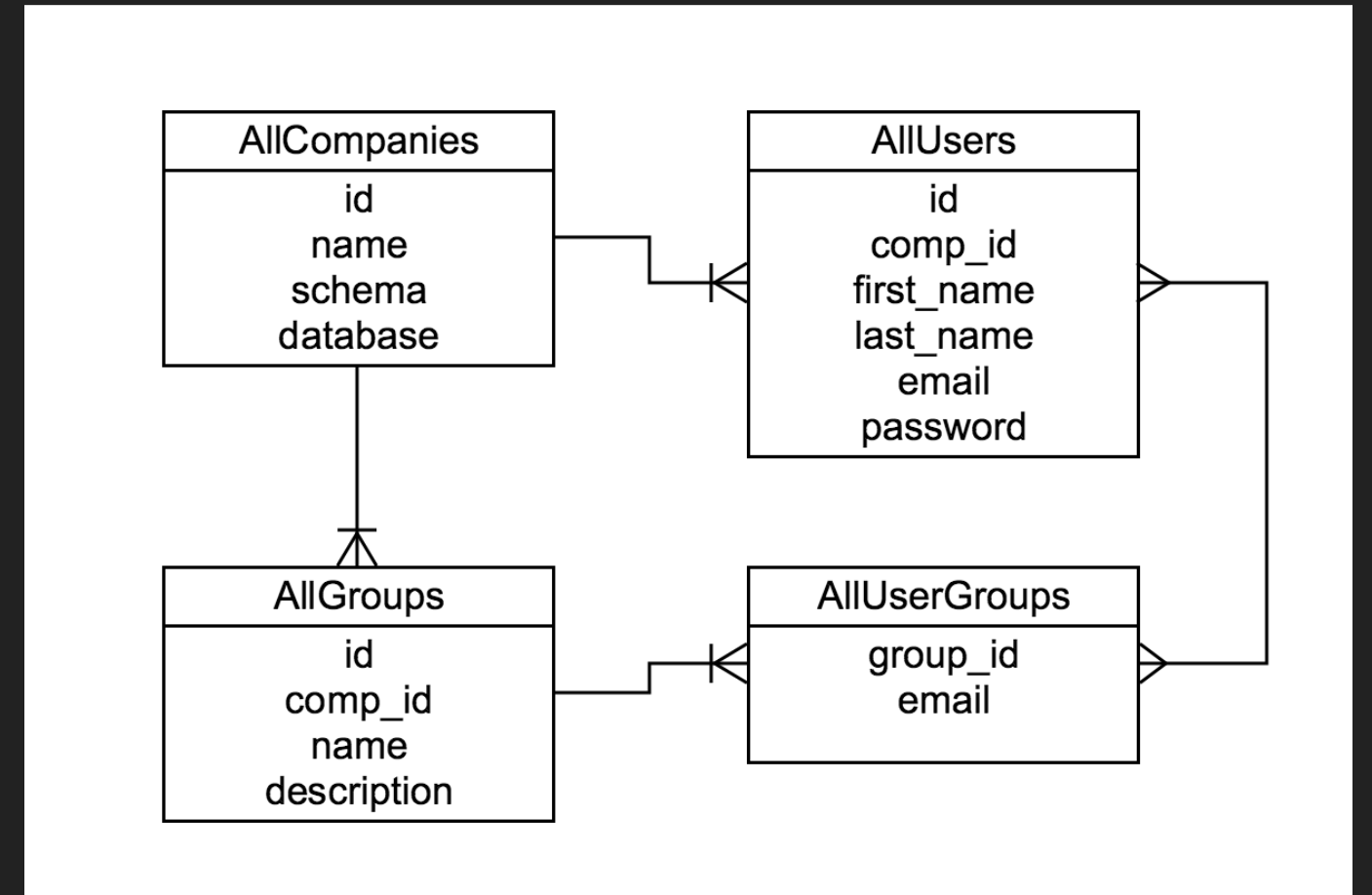
- Every time the database is queried, the application must specify the discriminator value
- The application works with specially-constructed views that return data for only the c

# Demo



# Security Tables

Basic, but useable example



Q&A

# Resources

- Source Code:
  - <https://bitbucket.org/jdlee/multitenant-java-ee-demo>
- Recommended Reading
  - <https://msdn.microsoft.com/en-us/library/aa479086.aspx>
  - <http://www.ibm.com/developerworks/data/library/techarticle/dm-1201dbdesigncloud/>
- My Info
  - Blog - <http://blogs.steeplesoft.com>
  - Google+ - <http://blogs.steeplesoft.com/+>
  - Twitter - <http://blogs.steeplesoft.com/twitter>
  - LinkedIn - <http://blogs.steeplesoft.com/in>

**Thank You**