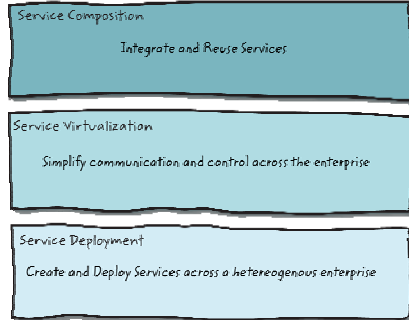


## TIBCO BusinessWorks and JBoss Transaction Service

Rourke McNamara  
Senior Product Manager,  
TIBCO BusinessWorks

© JBoss Inc. 2006

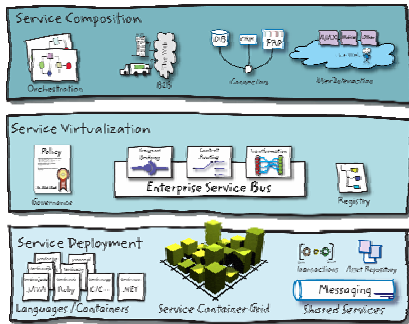
## TIBCO's SOA Framework



JBoss World  
LAS VEGAS

2

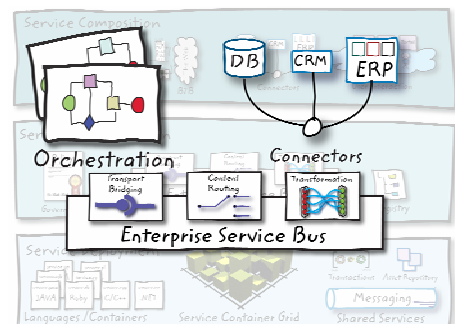
## TIBCO's SOA Framework



JBoss World  
LAS VEGAS

3

## TIBCO BusinessWorks



JBoss World  
LAS VEGAS

4

## TIBCO BusinessWorks

**TIBCO BusinessWorks delivers a comprehensive integration platform capable of supporting virtually any integration scenario or IT asset**

- Accelerate event-driven, real-time Business Integration with no coding required
- Orchestrate and assemble reusable business services into flexible 'composite' services/applications
- Deploy SOA to enable rapid adoption of advanced technologies (including TIBCO BPM and Business Optimization)



Functional components of SOA and Business Integration:

- ✓ **Services Construction**
  - Create new services
  - Wrap & expose legacy assets
- ✓ **Services Orchestration**
  - Model
  - Assemble
  - Deploy
  - Build composite service/apps
- ✓ **Services Backbone & ESB**
  - Connect
  - Transport (multi-protocol messaging)
  - Mediate
  - Route & deliver
  - Event notification
  - Exception handling
- ✓ **Services Lifecycle Management & Assurance**
  - Registry
  - Repository
  - Metadata management
  - Security
  - Policy
- ✓ **User Interaction**
  - Portal services
  - Rich clients

JBoss World  
LAS VEGAS

5

## How is BW Different

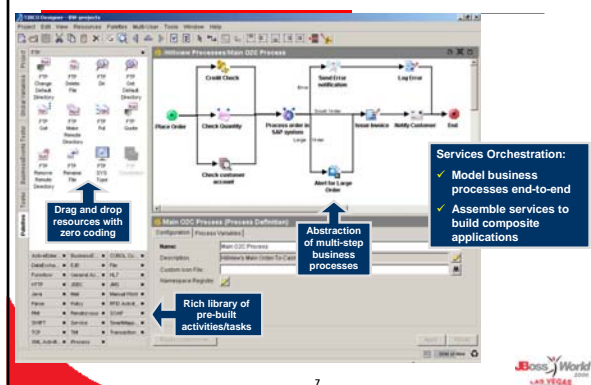
- Model Driven, not a code generator
- Scalable, fault tolerant, able to support a zero downtime environment
- 3<sup>rd</sup> generation product – rock solid
- Rich library of activities and palettes

- **Transactions!**

JBoss World  
LAS VEGAS

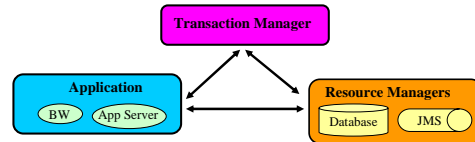
6

## Service Construction/Orchestration



## Transactions in BW

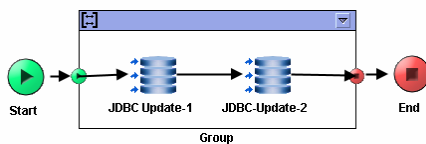
- Participants of a transaction are: application, transaction manager and one or more resource managers.



- Transaction Manager uses a two-phase protocol to ensure that all resource managers agree on the final outcome of the transaction.

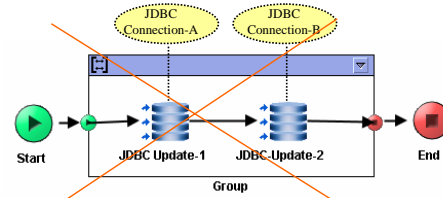
## Before JBoss Transaction Service

- BW 5.1 Transaction Features:
  - Transaction support only for JDBC activities.
  - Transaction demarcation is provided using the BW Transaction group activity.
  - Transaction is terminated at the end of the transaction group activity.



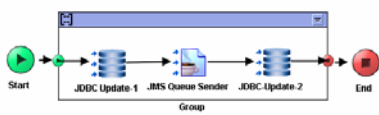
## Before JBoss Transaction Service

- BW 5.1 Transaction Limitations:
  - No transaction manager. Uses database native transaction support.
  - No transaction support for other XA Resources (JMS, Checkpoint..).
  - No atomic transaction support for JDBC activities that use different database connections.



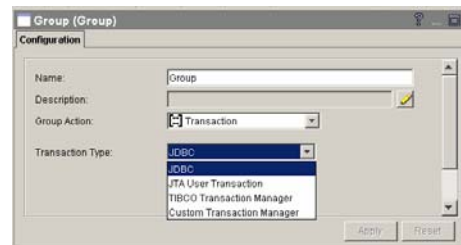
## BusinessWorks 5.2/5.3 Transactions

- BW 5.2/5.3 Transaction Features:
  - Transaction support for JDBC, JMS and EJB activities.
  - Transaction support for checkpoint.
  - Support for multiple JDBC and JMS resources under a single transaction.
  - Transactions are coordinated using a Transaction Manager.
  - Transaction demarcation will be provided using the BW Transaction group activity.
  - Transaction is implicitly started at the beginning and terminated at the end of the group.



## Easily Configured

- Transaction type is specified in the BW Transaction group.

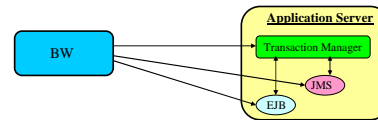


## Transaction Palette

- The resources required for configuring the transaction group will be contained in the palette "Transaction":
  - ✓ Custom TransactionManager Configuration: a shared resource that contains the details of a Custom transaction manager.
  - ✓ JTA UserTransaction Configuration: a shared resource that contains the details of the application server that provides the JTA support.
  - ✓ TIBCO TransactionManager Configuration: a shared resource that contains the details of the TIBCO transaction manager.
  - ✓ Transaction State: activity that can be used inside a transaction group to obtain status or modify the outcome of the transaction.

## Limitations of JTA

- Uses the Transaction Manager provided by the Application Server.
- JTA UserTransaction API is used to interact with the application server and provide transaction for JDBC, JMS & EJB activities.
- BusinessWorks JDBC activities must be configured to use the data source from the application server.
- BusinessWorks JMS activities must be configured to use the connection factory from the application server.

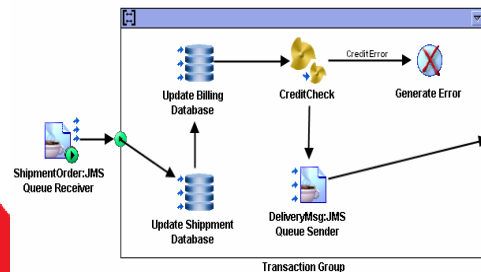


## XA Advantages

- ✓ New BW transaction model hides the complexity of interaction of the application, XA resource manager, transaction manager and provides the user with a zero coding mechanism to perform multiple operations as an atomic unit.
- ✓ Local transaction manager (can even run in the same JVM)
- ✓ Platform and language neutral industry-standard
- ✓ No Extra Network Traffic
- ✓ Example: shipment order
  - Receive a JMS message for shipment order.
  - Update shipment database.
  - Update billing database.
  - Perform Credit Check
  - Send JMS message for delivery request.
  - Finally user can commit or abort all operations.

## Example

- Shipment order example using BW 5.2 and JBoss Transaction Service
- Transaction Group: JMS Queue Receiver activity is also included in the transaction.



## Competitive Advantage for TIBCO

- Only process tool with XA among leading vendors
- Only orchestration or construction tool among leading vendors with XA support

## Why JBoss Transaction Service

- Proven
- Performant
- Support from awesome, responsive people who have been doing this forever
- Strategic, forward looking technology
- Flexible licensing

## Where we're going...

- WS-T
- BPEL
- Loosely coupled transactions

19



## SOA Related Resources

- **TIBCO SOA Resource Center**
  - ✓ Contains library of technical whitepapers & recorded webinars
  - ✓ On TIBCO.com at <http://www.tibco.com/software/soa/>

20



## Questions?



21

