



2013 Product Roadmap

January 2012

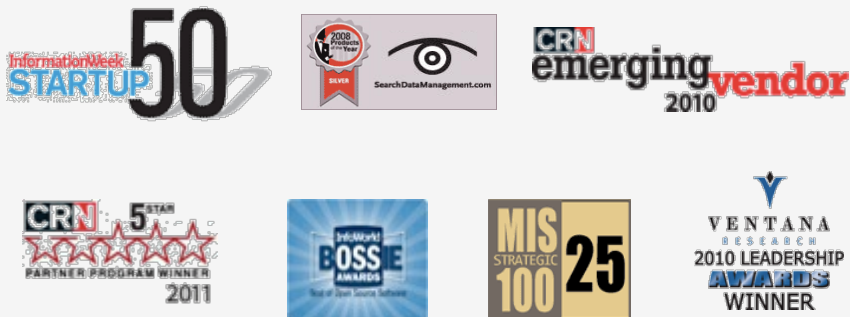
About Pentaho

- **Recognized leader** in business analytics & data integration
- **Subscription-based** business model
- Achieved **critical mass**:
 - Over **1,200 commercial customers**
 - Over **10,000 production deployments**
 - Over **185 countries**
- **Stewardship** of most important open source analytics projects



One Download Every
30 Seconds

INDUSTRY RECOGNITION



OVER 160 PARTNERS GLOBALLY

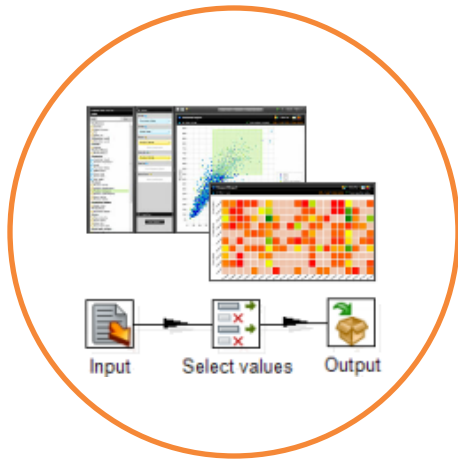


Pentaho Mission

Delivering the future of analytics today: modern, unified data integration and business intelligence platform

- Full business analytics & data integration
- Easy to incorporate big and diverse data
- Embeddable, cloud-ready analytics

Open source development model enables **fast and broad innovation**



BA & DI Platform

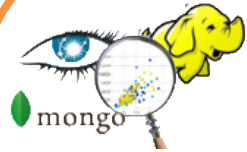


Big Data Analytics



Embedded/OEM

Delivering On Our Mission



Big Data

Increase Productivity – visual tools delivers 10x boost

Reduce Costs - one product, one skill set for all phases of big data solution design

Accelerate Time to Market – single platform that gets you from data to visualization

Mitigate Risks – Abstracted solution design promotes experimentation, iterations, etc.



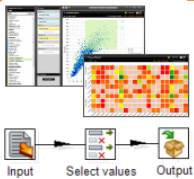
Embedded/OEM

Flexible Deployment Options – out-of-the-box, skin-able, embeddable

Extensible – Service Oriented Architecture, rich plug-in architecture

Broad Platform Support – standards based, cross platform, any data source

Flexible Pricing Structures – adaptable to your pricing structure



BA & DI Platform

Reduce Time to Value – unified platform speeds deployments, reduces complexity

Low Cost – typically 20% the cost of proprietary BI Platform alternatives

IT Friendly – cross platform, standards based, broad data source support

End-User Friendly – simple report & dashboard authoring, immersive data discovery

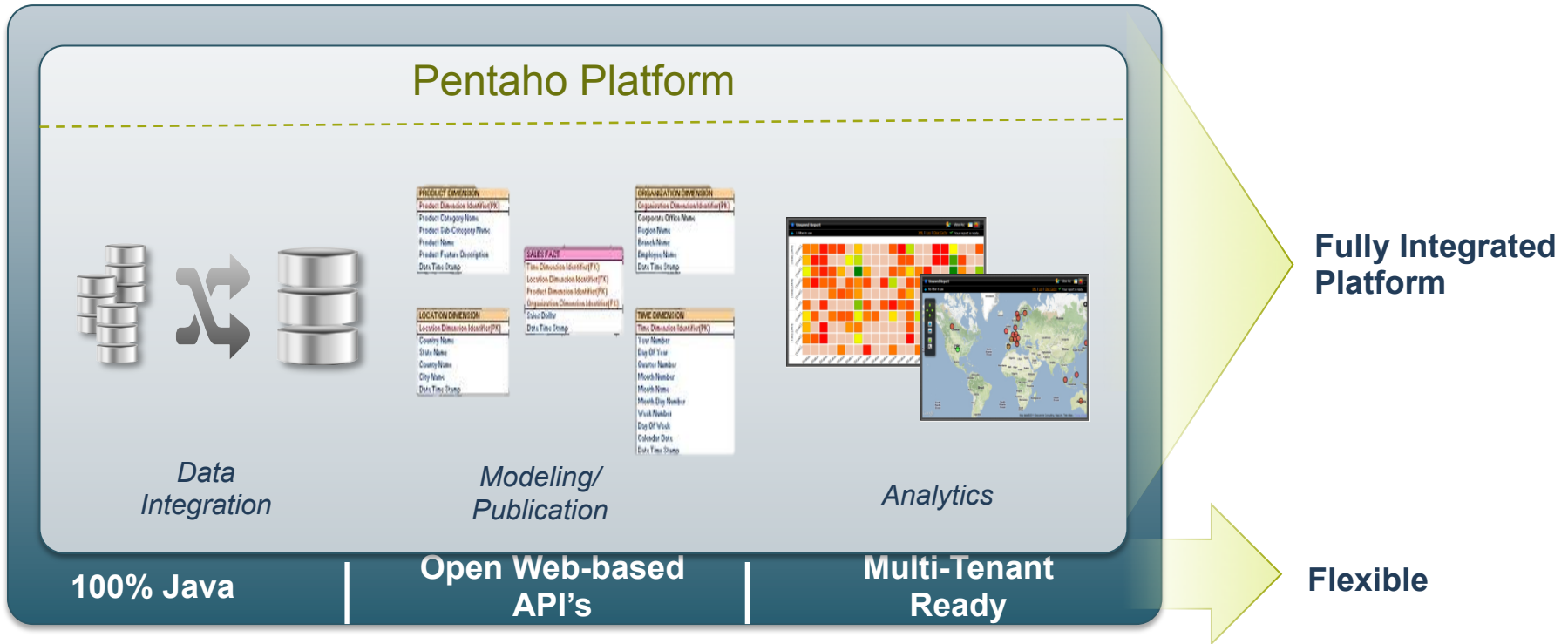
Pentaho Business Analytics


DBA
ETL/BI Developer


Business Users
Executives


Analysts
Data Scientists

 **Diverse Users**



2013 Product Roadmap

5.0 RELEASE

Target Release Date: **April 2013**

- Extending Leadership in Big Data Analytics
- Simplified Deployment and Administration
- More Power and Personalization for End Users
- Simplified integration, extensibility and control for OEMs

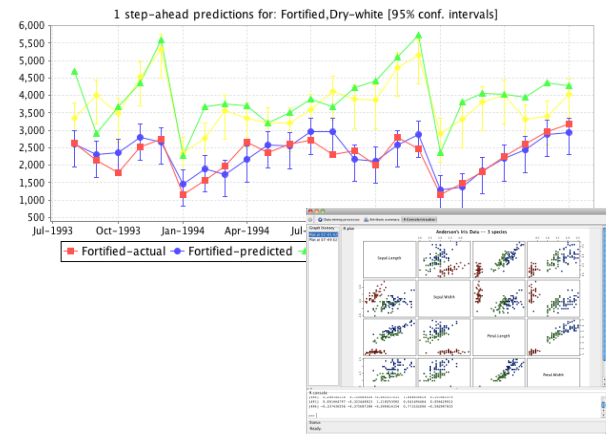
Big Data Ease-of-use Improvements

- Pentaho MapReduce:
 - Centralized, connection management for greater re-use
 - Simplified Output configuration (auto concatenation of output fields)
- InstaView
 - Rich parameter support: powerful templates, easier for end users
 - Automatic configuration discovery simplifying deployment and upgrades



Enhanced Functionality

- Powerful new InstaView Predictive & Data Mining templates
 - Fast path to advanced Big Data Analytics
 - Powered by Pentaho Data Mining (Weka)
- Tighter R integration for Data Scientists
 - Execute R scripts in a Knowledge Flow
 - Push/pull data to R
 - Interactive R console for visualizing results
- Expanded MongoDB Integration
 - Direct Access through Pentaho Reporting
 - Metadata discovery to reduce manual configuration
 - Support for replica sets and secondary slaves
 - Aggregation framework support (pipelines)



Expanded Ecosystem Support

- Hadoop High Availability support
- Expanded Platform Integration and Certification
 - Amazon RedShift
 - Cloudera Impala
 - Support for latest versions of CDH, MongoDB and Cassandra
- Professional documentation for
 - Working with secure Hadoop clusters
 - Publishing and sharing InstaView solutions

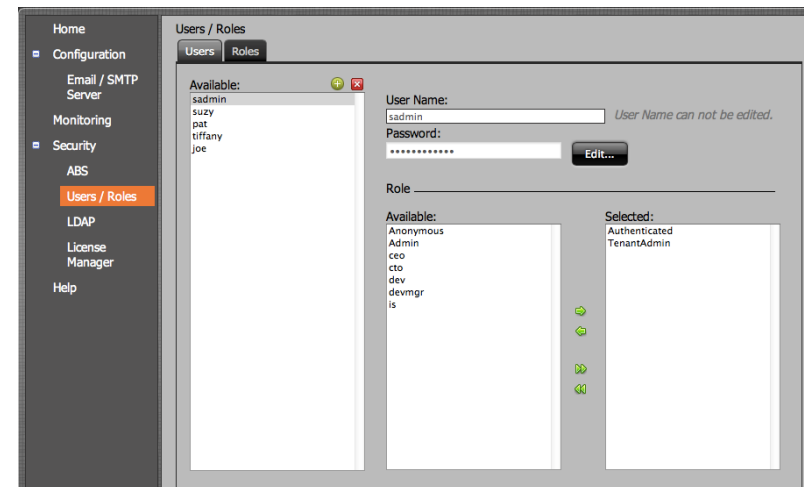


cloudera
Ask Bigger Questions



Ease-of-use for Administrators

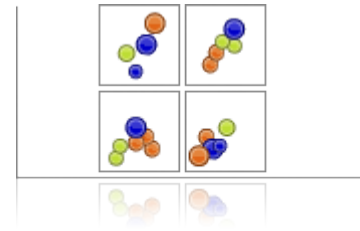
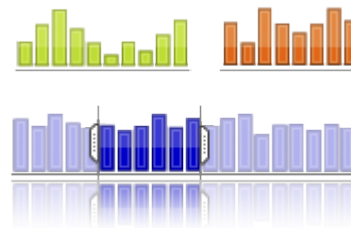
- New, Integrated, Easy-to-use Administration Console
 - Part of the User Console: reduced maintenance & context switching
 - Simplified UI for security, license and configuration administration
- Comprehensive Audit Reporting
 - Out-of-the-box dashboards for fast access to common questions
 - Interactive analysis for exploring audit information
- Enhanced Scheduling System
 - Administrator controlled blackout periods
 - Schedule parameterization for greater control and re-use of scheduled operations



Power and Ease-of-use for End Users

- New, improved Workspace providing
 - Quick access to frequently used content
 - View and manage favorites
 - View newly generated content, manage schedules, and more...
- Explore data in new ways with compelling new visualizations
- Greater design control for drill-through reports
- Fresh new look for the Pentaho User Console
- Android support for Pentaho Mobile

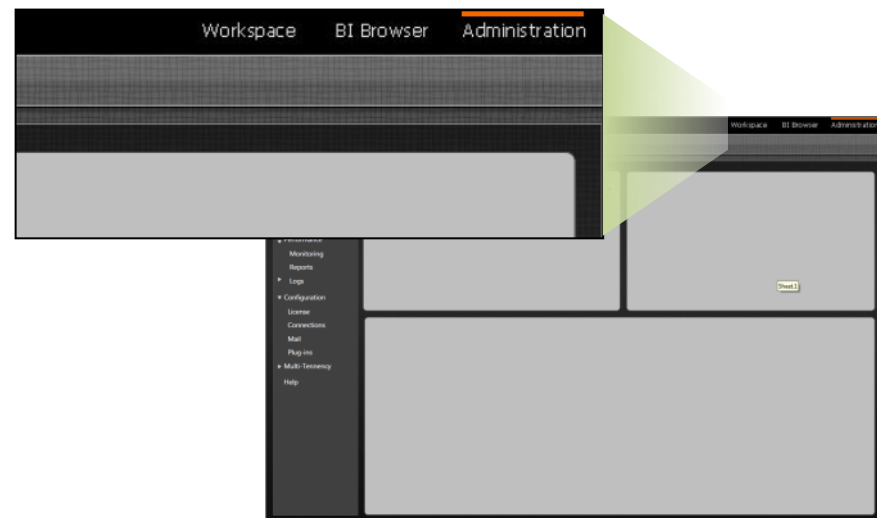
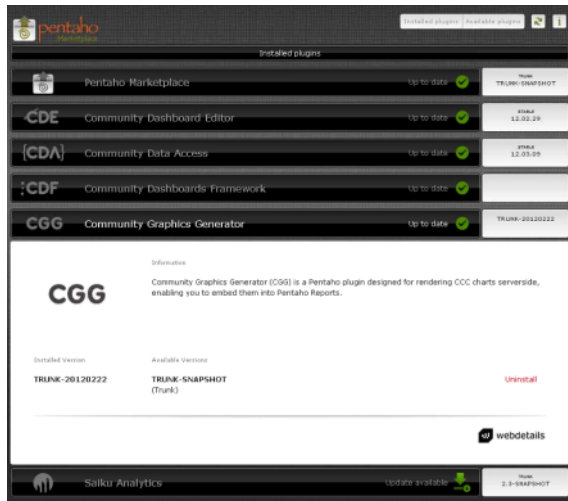
analysis **BIG DATA**
Cloud Computing
Intranet java LDAP metadata
mobile **Open source**
visualization web 2.0
visualization web 2.0
mobile open source



Simplified Integration and Extensibility

BA
5.0

- New REST API simplifying integration and embedding use cases
- Action Based Security providing greater control over user/group access to client tools and functionality
- New User Console Perspectives plugin layer
- Expanded Reporting SDK with additional samples and doc
- Pentaho Marketplace – simple access to new plugin releases, community/partner projects and more

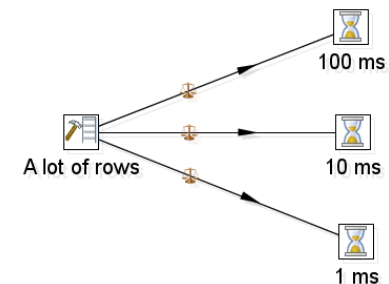


Pentaho Data Integration 5.0

- Job Restart-ability
 - Set checkpoints
 - Restart jobs from last successful checkpoint
- Transactional Job Execution
 - Provides the ability to 'roll back' job execution on failure
- Data Profiling Perspective
 - Analyze Tables and Columns in preparation for ETL
 - View common statistics - cardinality, min/max values, nulls, and more
- Data Movement Load Balancing

String analyzer (Country name,ISO 3166-2,ISO 3166-3,Linked to country:)

	Country name
Row count	255
Null count	0
Entirely uppercase count	0
Entirely lowercase count	0
Total char count	2471
Max chars	42
Min chars	4
Avg chars	9.69019607843137
Max white spaces	6
Min white spaces	0
Avg white spaces	0.4078431372549019
Uppercase chars	352
Uppercase chars (excl. first letters)	97
Lowercase chars	1995
Digit chars	0
Diacritic chars	4
Non-letter chars	124
Word count	359
Max words	7
Min words	1



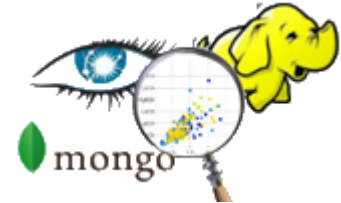
5.1 RELEASE

Target Release Date: **October 2013**

- Extend Leadership in Big Data
- Ease-of-Use for Business Users, BI Builders and Administrators

Big Data Ease-of-use Enhancements

- InstaView Improvements
 - Simple publishing and sharing of Analytics
 - Browser-based access to InstaView solutions



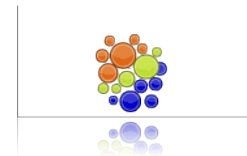
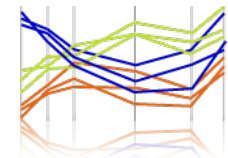
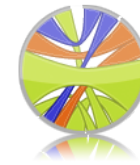
Enhanced Functionality

- In-cluster ETL/ELT without MapReduce
- Integration with Hive 2
- Google BigQuery support



Ease-of-use for Business Users

- Enhanced Visualizations
 - Compelling new visualization types
 - Improved formatting options
 - User defined thresholds/target lines
- Simplified connectivity to new data sources
 - Better metadata discovery and automatic model generation
 - Data Source wizard ease-of-use improvements to streamline creation of new data sources
- Next generation analysis engine (Mondrian)
 - Attribute-oriented: eliminates need to understand hierarchies



Ease-of-use for BI Builders and Administrators

- Simplified Installer and Upgrade Utilities
- Comprehensive Server Monitoring
 - Out of the box dashboards for performance and resource utilization
 - Statistics cube for ad hoc analysis of monitoring data
- Improved Date handling
 - Date Dimension generator simplifying analysis of time-related attributes
 - Parameterized date filters
 - Calendar Picker filter control

Next generation analysis engine (Mondrian 4.0)

- Measure Groups allowing cubes to span multiple fact tables
- Improved support for semi-additive and non-additive measures
- Improved statistics capturing and error handling
- Complete, thin-client model editor

APPENDIX

Safe Harbor Statement

This presentation contains forward-looking statements that are based on management's expectations, estimates, projections and assumptions. Forward-looking statements are made pursuant to the safe harbor provisions of the Private Securities Litigation Reform Act of 1995, as amended. These statements are not guarantees of future performance or functionality and involve certain risks and uncertainties, which are difficult to predict. Therefore, actual future functionality, features, results and trends may differ materially from what is forecast in forward-looking statements due to a variety of factors.

Pentaho Release Cadence

Starting 2012, Pentaho will be migrating to a twice a year major release. We think this will allow both our customers and our community to better anticipate upgrades and migrations in a way that is more conducive to business impact. It also allows Pentaho to deliver releases that are feature rich and truly adds value to your business.

- Pentaho Products Team

2012 Highlights

Business Analytics

- Pentaho Mobile Launch
- GEO Location Enablement
- X New Visualizations
- Advanced Filters for Interactive Reporting
- Numerous PDI Improvements: Reporting Integration, Data Integration as a service, and much more
- PDI Monitoring Operations Mart



Big Data

- Instant visualization of Hadoop and NoSQL data through InstaView
- Support for a wider base of Hadoop distributions through a Shim Layer
- Tighter integration with popular MPP Databases providing high speed, massively scalable data loading

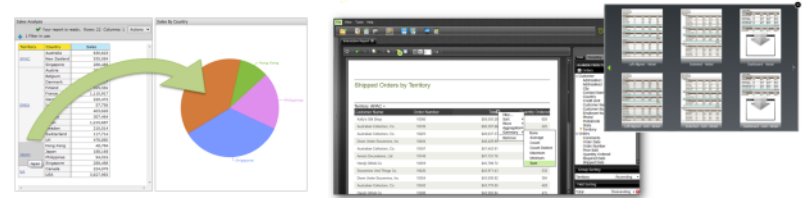
Enterprise and OEM

- Distributed Analytics Cache (Mondrian): improved performance and greater scalability

2011 Highlights

Business Analytics

- Enhanced Dashboard Designer (interactivity)
- New Interactive Reporting Client
- Simplified creation of New Data Sources
- User Interface overhaul
- Numerous PDI Improvements: Reporting Integration, Data Integration as a service, HL7 integration and much more



Big Data

- Broad support for popular Hadoop Distributions
- Integration with leading NoSQL solutions including HBase, MongoDB and Cassandra
- Tighter integration with popular MPP Databases providing high speed, massively scalable data loading



Enterprise and OEM

- 'Skin-able' User Console
- New Reporting caching layer providing better performance for large reports
- Distributed Analytics Cache (Mondrian): improved performance and greater scalability



Thank You

Join the conversation. You can find us on:



<http://blog.pentaho.com>



@Pentaho



Facebook.com/Pentaho



Pentaho Business Analytics