

RED HAT :: CHICAGO :: 2009

**SUMMIT**

**FOLLOW US:**

[TWITTER.COM/REDHATSUMMIT](https://twitter.com/redhatsummit)

**TWEET ABOUT US:**

ADD #SUMMIT AND/OR #JBOSSWORLD TO THE END  
OF YOUR EVENT-RELATED TWEET

presented by



RED HAT :: CHICAGO :: 2009

**SUMMIT**

# SIMPLIFYING NEW SERVER DEPLOYMENT

Matt Domsch  
Technology Strategist, Office of the CTO, Dell  
September 4, 2009

presented by



# Agenda

Problem

Solution Options

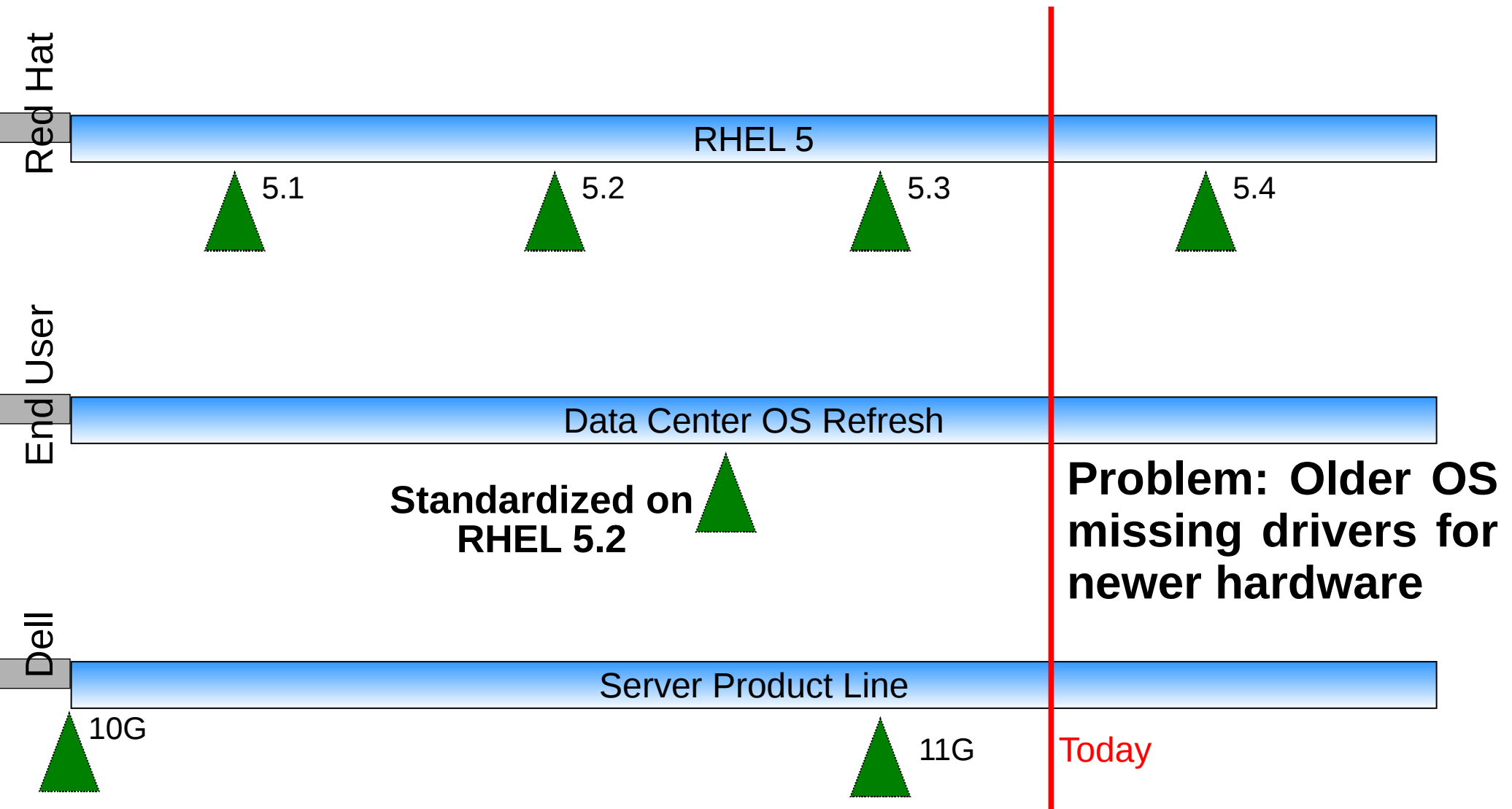
- DKMS & Red Hat Driver Update Program

- Dell Lifecycle Controller

- Virtualization

Future Directions

# Situation: OS Deployments Lag New Hardware



**Goal: Meet the needs of both the user's application and the hardware**

# **Solution Option:**

## **DKMS & Red Hat Driver Update Program**

### Dynamic Kernel Module Support

Tool to assist backporting drivers to older OS versions

Build Driver Disks and RPMs for deployment

### Red Hat Driver Update Program

Driver developers use DKMS to prepare Kernel Module Packages

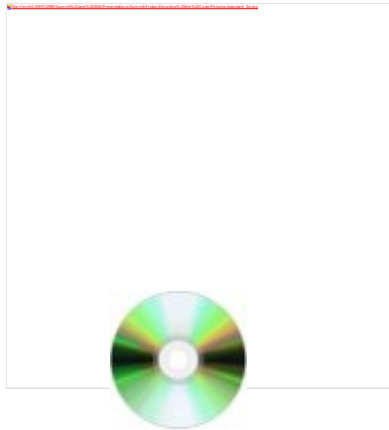
End Users receive drivers, built, tested and supported by Red Hat

**OS Installation is still a manual process**  
**Most suitable for individual deployments**

# Solution Option: Dell Lifecycle Controller

OS Installer CD  
Drivers

Lifecycle Controller  
Provides Drivers



+

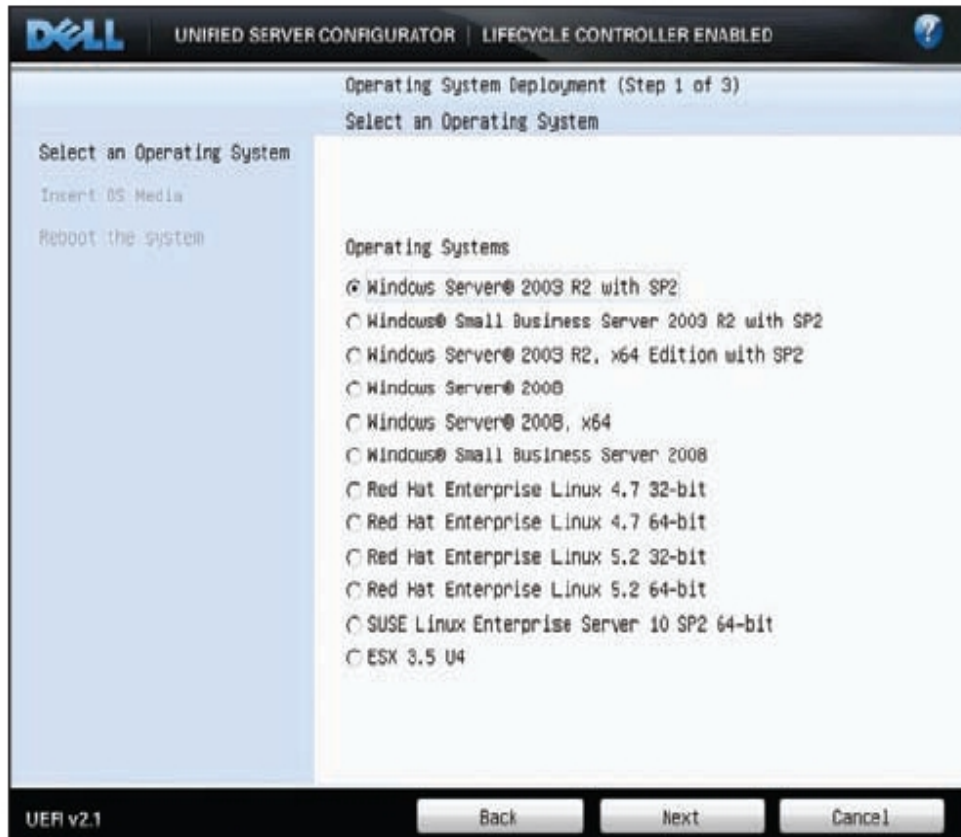


=



Seamless, installed  
OS with all necessary  
drivers, without using  
a driver disk.

# Dell Lifecycle Controller



Latest drivers  
automatically  
downloaded from  
dell.com before  
installation



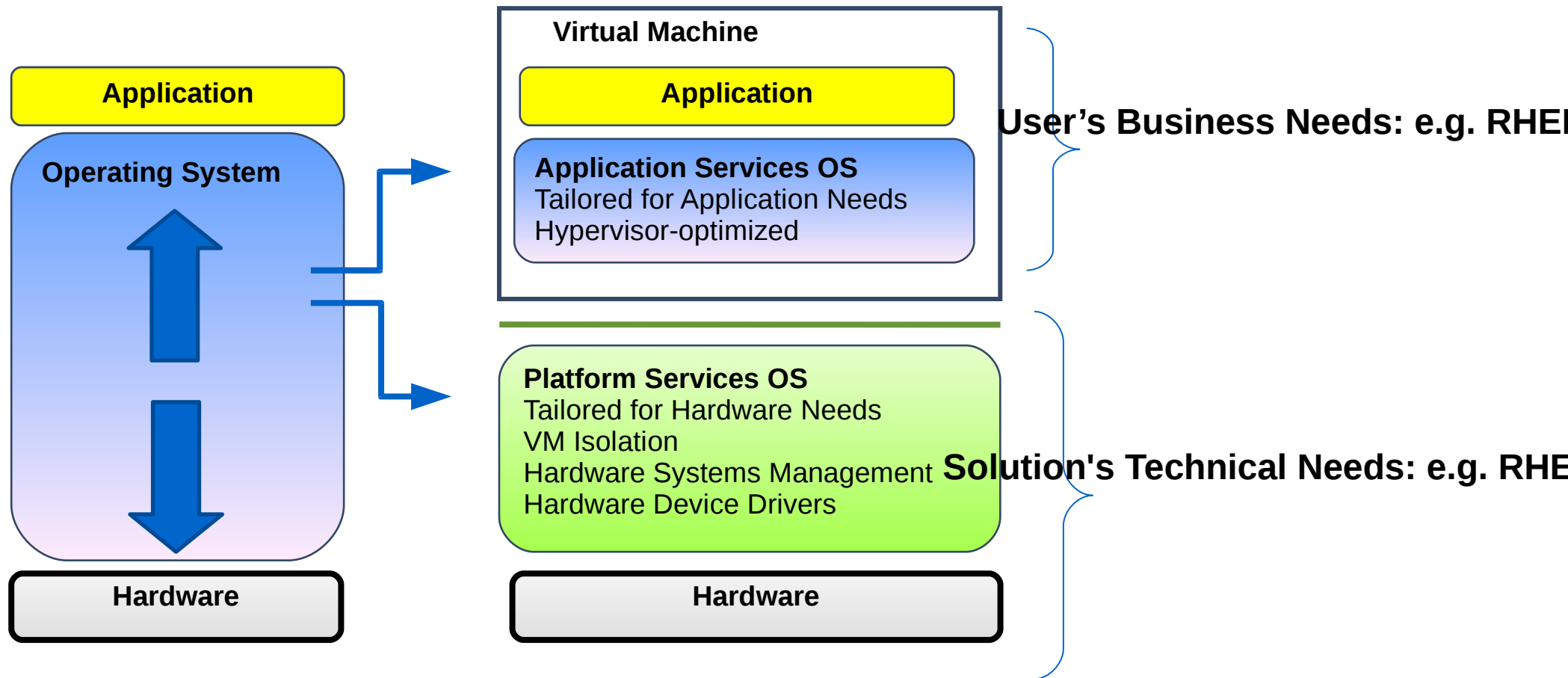
+



Anaconda  
automatically  
looks on LLC  
for drivers



# Solution Option: Virtualization



***Reducing Complexity*** through decomposition  
***Simplifying*** User OS Image Management

# Future Integration

IDRAC 6 Enterprise with 1GB Vflash

- Secure, PXE-less network deployments

- Remotely stage your own content

Firmware-Tools: Dell Firmware Update Framework

- YUM & RPM-enabled

Linux Foundation Driver Backport Working Group

- DKMS developer tool

- Works across distributions and versions

# For More Information

Dell Lifecycle Controller

<http://dell.com/openmanage>

Red Hat Driver Update Program <http://dup.et.redhat.com/>

DKMS

<http://linux.dell.com/dkms>

Firmware-Tools

<http://linux.dell.com/firmware-tools>

Linux Foundation Driver Backport Working Group

<http://www.linuxfoundation.org/collaborate/workgroups/driver-backport>

# QUESTIONS?

TELL US WHAT YOU THINK:  
[REDHAT.COM/SUMMIT-SURVEY](https://redhat.com/summit-survey)



# Acknowledgements

CD photo license CC-BY-SA 2.5

[http://commons.wikimedia.org/wiki/File:Compact\\_disc.svg](http://commons.wikimedia.org/wiki/File:Compact_disc.svg)

Hard Disk photo license CC-BY-SA 2.5

[http://commons.wikimedia.org/wiki/File:Serial\\_ATA\\_hard\\_disk.jpg](http://commons.wikimedia.org/wiki/File:Serial_ATA_hard_disk.jpg)