



# Zentyal Cloud Report

January 2010 - October 2010  
organization: Widgets Networks  
for: Daily Planet

## Table of contents

<b>Table of contents</b>	<b>2</b>
<b>Full standalone server</b>	<b>4</b>
System information . . . . .	4
Alerts . . . . .	6
HTTP Proxy . . . . .	9
Mail . . . . .	14
Firewall . . . . .	18
File sharing . . . . .	19
VPN . . . . .	21
Printers . . . . .	22
Intrusion Detection System . . . . .	24
Security Audit . . . . .	25
Network . . . . .	26
<b>Gateway</b>	<b>27</b>
System information . . . . .	27
Alerts . . . . .	29
HTTP Proxy . . . . .	32
Firewall . . . . .	35
VPN . . . . .	36
Intrusion Detection System . . . . .	37
<b>Office server</b>	<b>38</b>
System information . . . . .	38
Alerts . . . . .	40

<b>Firewall</b> . . . . .	<b>43</b>
<b>File sharing</b> . . . . .	<b>44</b>
<b>Printers</b> . . . . .	<b>46</b>
<b>Security Audit</b> . . . . .	<b>48</b>
<b>Backup</b> . . . . .	<b>49</b>

## Full standalone server

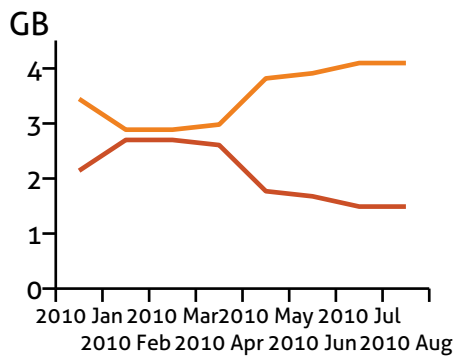
### System information

#### Disk usage

This chart shows how much space is used and free for each filesystem mount point.

#### System disk

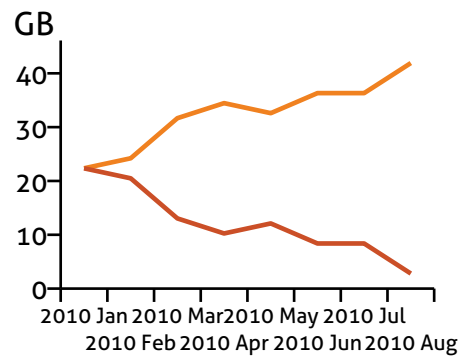
Show the system disk usage also known as root (/)



	Latest
Used	4.10 GB
Free	1.49 GB
<b>Total</b>	<b>5.59 GB</b>

#### User disk

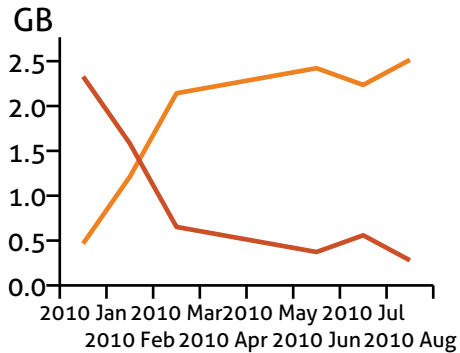
Show the user disk usage where the user homes are stored (/home)



	Latest
Used	41.91 GB
Free	2.79 GB
<b>Total</b>	<b>44.70 GB</b>

## Variable disk

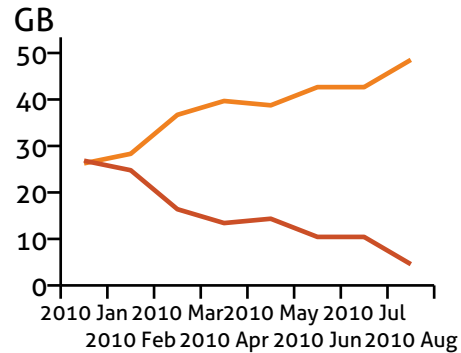
Show the variable files disk usage whose content is continuously changing during normal system operation such as logs, spool files or mailboxes (/var)



	Latest
Used	2.51 GB
Free	0.28 GB
Total	2.79 GB

## Total

Show the total aggregated disk usage from all your disks

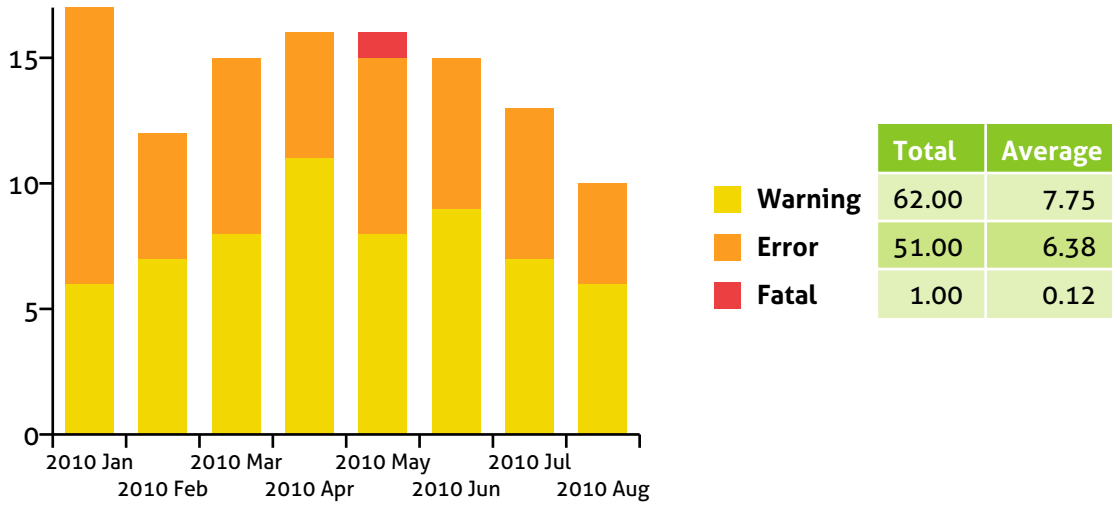


	Latest
Used	48.52 GB
Free	4.56 GB
Total	53.09 GB

## Alerts

### Total alerts

Total number of alerts grouped by level generated by the Zentyal server.

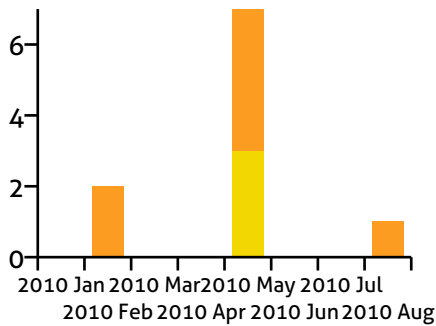


## Alerts by source

This chart breaks the alerts by source to help to identify which features could be causing problems.

### Configuration backup

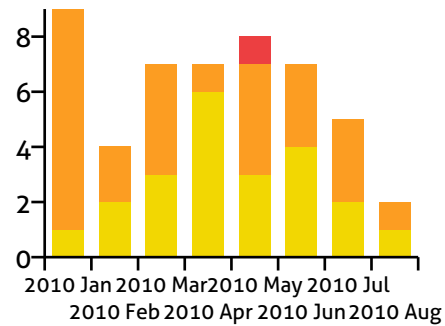
Automatic configuration was backed up correctly



	Total	Average
<span style="color: yellow;">■</span> Warning	3.00	0.38
<span style="color: orange;">■</span> Error	7.00	0.88
<span style="color: red;">■</span> Fatal	0.00	0.00

### Free RAM memory usage

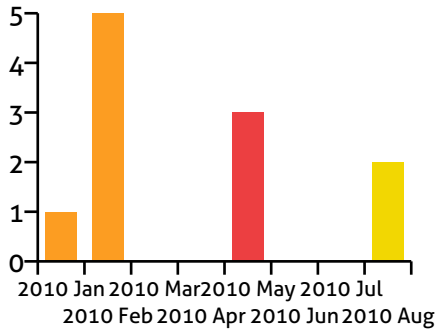
Check if there is enough free physical RAM memory





	Total	Average
<span style="color: yellow;">■</span> Warning	22.00	2.75
<span style="color: orange;">■</span> Error	26.00	3.25
<span style="color: red;">■</span> Fatal	1.00	0.12

## Service

Check if any Zentyal service is not running when it should



	Total	Average
 <b>Warning</b>	2.00	0.25
 <b>Error</b>	6.00	0.75
 <b>Fatal</b>	3.00	0.38

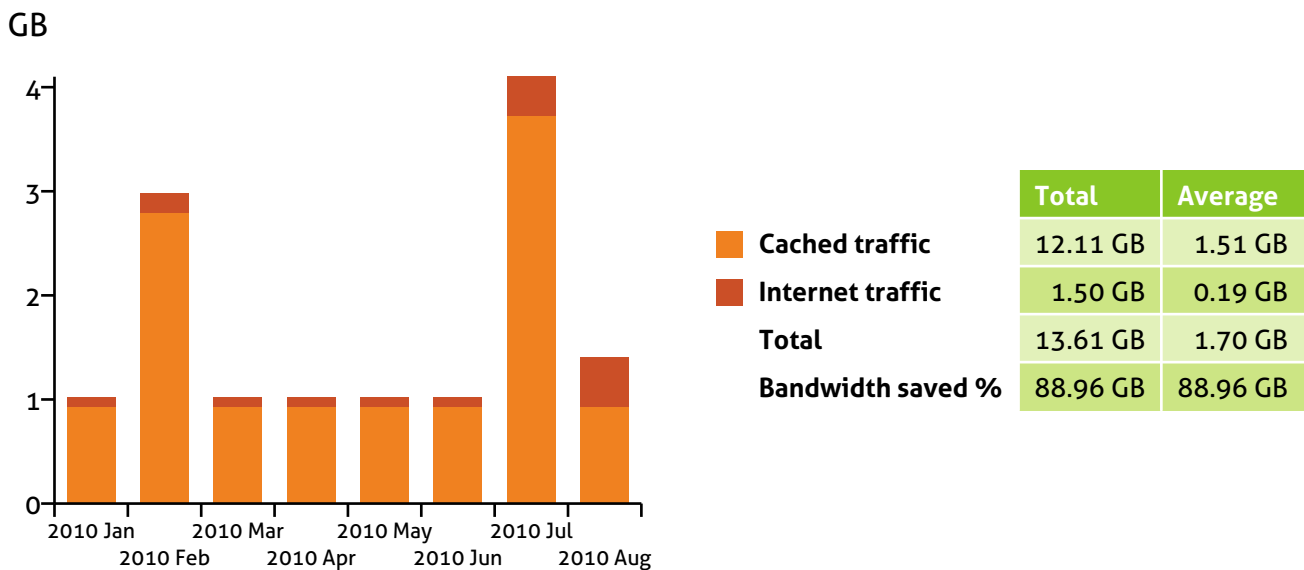


## HTTP Proxy

Within this section, the total HTTP traffic is split into '**Cached traffic**' and '**Internet traffic**'. The cached traffic is the set of object requests (HTML pages, images, ...) that already are in the *cache*, so they could be served directly to the client reducing latency and traffic; Internet traffic are requests which should be retrieved from the Internet.

### Web traffic

This chart shows the total traffic going through the HTTP proxy. The amount of network traffic saved by the HTTP cache is also described.



### Top domains

The Internet domains most accessed by your network using the HTTP proxy.

Domain	Traffic (GB)	Cached traffic (%)	Internet traffic (%)	Visits
dplanet.com	3.73	87.500	12.500	40000
nytimes.com	4.00	88.372	2.326	30000
metropolis-review.com	3.67	86.294	1.269	24000
metropolis.gov	3.26	95.714	1.714	21000
lindustries.com	3.17	82.353	1.765	19000
google.com	2.61	92.857	7.143	17000
hotmail.com	2.24	89.583	6.250	15000
abc.es	1.21	93.846	6.154	11000

## Top blocked domains

The domains which have been blocked more frequently by the content filter.

Domain	Visits
facebook.com	900
youtube.com	700
friendster.com	400
dig.com	300
filestube.com	280
match.com	210
allthemusic.com	180
betandwin.com	100

## Top traffic by IP

This table lists the IP addresses which received more data through the HTTP proxy and the traffic statistics.

IP	Traffic (GB)	Cached traffic (%)	Internet traffic (%)	Visits
10.45.12.12	3.82	85.366	7.317	40000
192.168.4.5	3.54	39.474	47.368	30000
34.23.12.1	3.48	85.561	24.064	24000
98.34.12.12	3.07	97.273	2.727	21000
154.12.12.12	2.98	82.812	17.188	19000
192.168.5.6	2.42	94.231	5.769	17000
101.45.22.12	2.05	90.909	9.091	15000
46.23.12.12	1.02	97.273	2.727	11000

## Top blocked traffic by IP

IP addresses had more requests blocked by the proxy and the number of denied requests.

IP Address	Visits
192.168.4.5	421
10.45.12.12	389
192.168.5.13	342
192.168.4.105	293
192.168.5.67	212
192.168.5.6	189
102.168.5.108	45
192.168.4.12	4

## Top traffic by subnet

This table lists the sub-networks which received more traffic through the HTTP proxy and their traffic statistics. In order to calculate the sub-networks a netmask of 24 bits to all the requesters' IP addresses is assumed.

Subnet	Traffic (GB)	Cached traffic (GB)	Internet traffic (GB)	Visits
192.168.5.0	47.50	31.66	15.83	380000
192.168.4.0	40.05	27.01	13.04	320000
10.0.0.0	18.63	13.04	5.59	230000

## Top blocked traffic by subnet

This table shows which sub-networks had more requests blocked by the proxy and the number of denied requests. In order to calculate the sub-networks a netmask of 24 bits to all the requesters' IP addresses is assumed.

Subnet	Visits
192.168.5.0	423
192.168.4.0	332
10.0.0.0	254

## Top traffic by user

This table lists the users who received more traffic through the HTTP proxy and their traffic statistics. Requests' users are only registered for those accesses which require authentication.

Username	Traffic (GB)	Cached traffic (%)	Internet traffic (%)	Visits
jsmith	3.45	89.189	10.811	40000
ckent	3.26	91.429	8.571	30000
llane	3.07	72.727	27.273	24000
jholton	2.18	85.470	14.530	21000
tsmith	1.77	84.211	15.789	19000
mariamb	1.68	94.444	5.556	17000
lisas	1.49	87.500	12.500	15000
bob	1.30	96.429	3.571	11000

## Top blocked traffic by user

This table shows the users who had more requests blocked by the proxy and the number of denied requests. Requests' users are only registered for those accesses which require authentication.

Username	Visits
jsmith	400
ckent	332
llane	121
jholton	108
tsmith	98
mariamb	84
lisas	64

## Top domains by user

This table lists the combinations among users and domains which had generated more traffic. Requests' users are only registered for those accesses which require authentication.

### ckent

Domain	Traffic (MB)	Visits
google.com	61.04	9342
yahoo.es	33.38	9002
nytimes.com	22.89	8761
dplanet.com	11.44	7974
metropolis.gov	10.49	7424
lindustries.com	8.58	5676
hotmail.com	7.63	4654
abc.es	7.06	1002

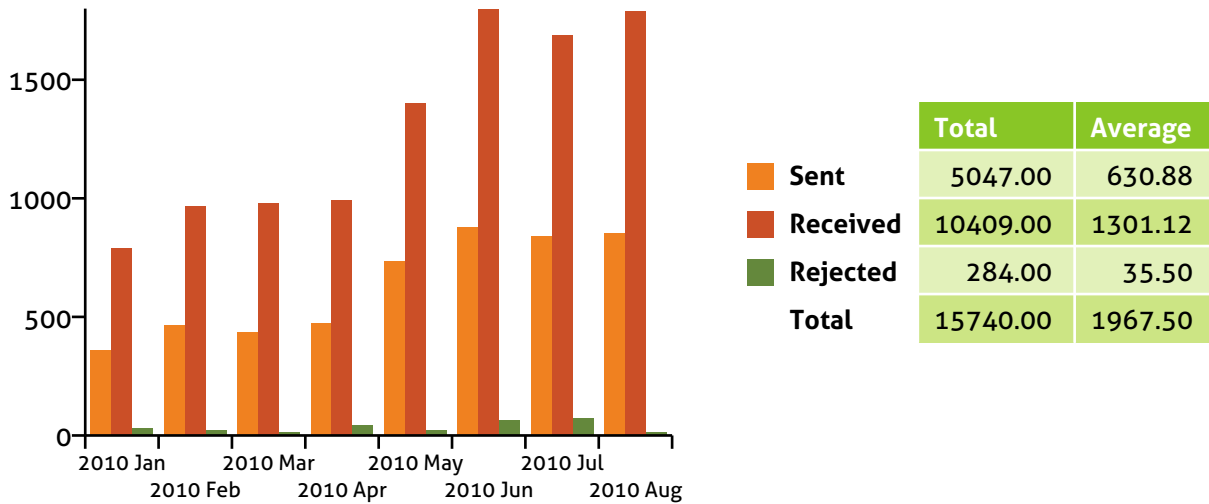
### jholton

Domain	Traffic (MB)	Visits
dplanet.com	38.15	6743
salon.com	28.61	5632
lindustries.com	26.70	4545
metropolis-review.com	25.75	4412
europypress.com	25.18	4109
metropolis.gov	21.93	3634
hotmail.com	20.03	2100
google.com	8.58	1456

## Mail

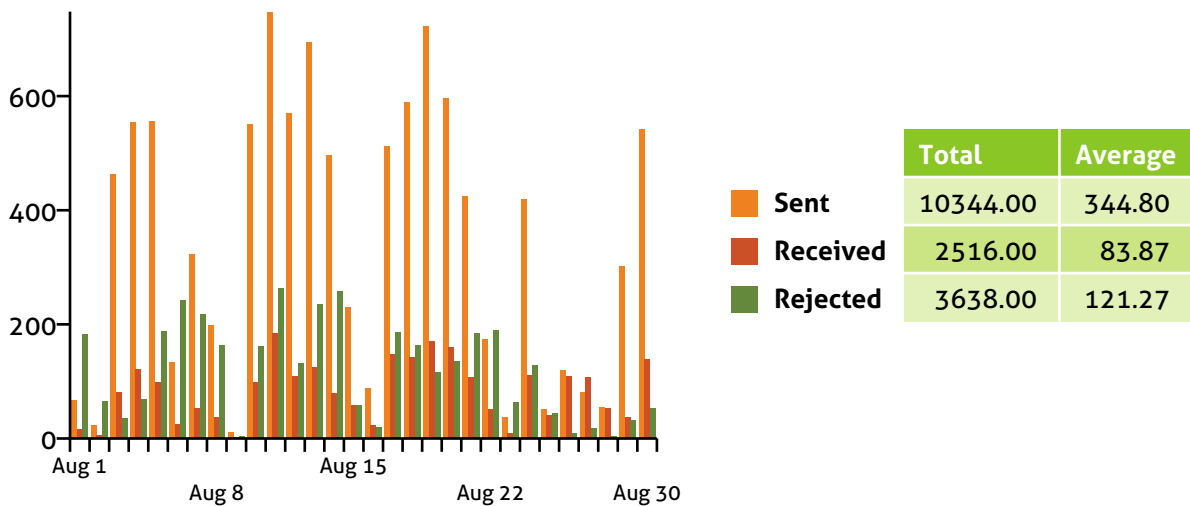
### Mail messages

Amount of mail messages sent, received and rejected from your Zentyal managed mail domains.



### Traffic messages for last month per day

Show the traffic statistics per day of sent, received and rejected messages.



## Top external domains mail is sent to

This table displays the mail domains which more traffic is sent to divided by the local mail domains.

### dailyplanet.com

Domain	Traffic (MB)	Messages
dailyplanet.com	75.44	756
metropolis.gov	74.01	733
metropolis-review.com	52.83	563
gmail.com	37.00	434
e-learn.edu	36.05	373
pubmed.org	25.37	332
eppress.com	20.22	321
metro-guide.com	17.26	205

### metropolis-review.com

Domain	Traffic (MB)	Messages
dailyplanet.com	80.20	843
metropolis-review.com	43.49	645
gmail.com	33.00	453
ep-agency.com	32.23	403
eppress.com	22.41	387
llindustries.com	20.79	345
metropolis.gov	18.41	243
gourmet-guide.com	11.83	221

## Top external domains mail is received from

This table shows the external domains which have sent more traffic to each local domain.

### dailyplanet.com

Domain	Traffic (MB)	Messages
dailyplanet.com	78.30	823
metropolis.gov	72.10	717
metropolis-review.com	50.93	600
metro-stock.biz	37.96	450
gmail.com	35.10	365
news-world.nl	33.95	356
eppress.com	31.66	341
e-aidit.com	21.08	245

### metropolis-review.com

Domain	Traffic (MB)	Messages
metropolis-review.com	67.81	785
dailyplanet.com	65.42	654
l-corp.com	49.02	563
gmail.com	36.05	404
gourmet-guide.com	33.86	321
eppress.com	35.10	398
llindustries.com	29.95	287
metropolis.gov	20.31	254

## Top user senders

This table shows those users who send more messages

### dailyplanet.com

Mail address	Messages
ckent	3030
llane	2232
jholton	2100
mariamb	1221
bob	900

### metropolis-review.com

Mail address	Messages
jsmith	433
tsmith	423
lisas	350
rtroupe	235
ehamilton	170

## Top user receivers

This table shows those users who receive more messages

### dailyplanet.com

Mail address	Messages
llane	3433
jholton	3120
mariamb	2042
ckent	1852
bob	1632

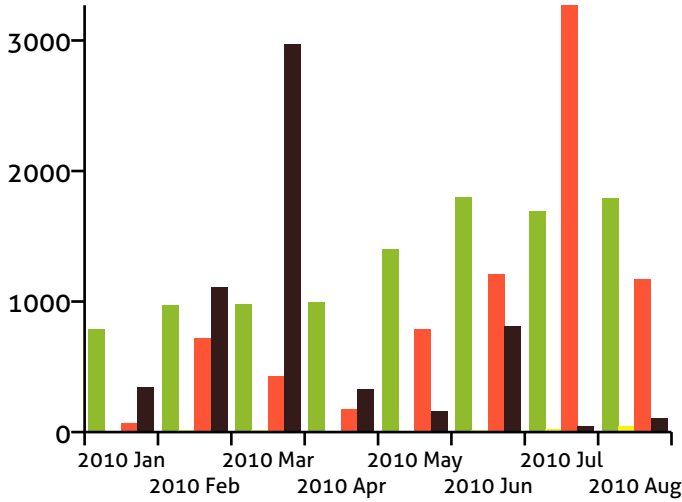
### metropolis-review.com

Mail address	Messages
tsmith	1021
jsmith	782
lisas	456
rtroupe	320
ehamilton	245



## SMTP filter

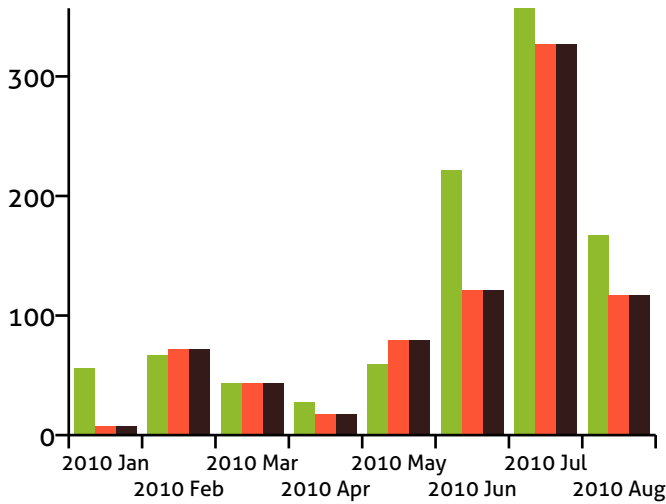
Statistics of processed mail through the SMTP filter.



	Total	Average
Clean	10409.00	1301.12
Bad header	110.00	13.75
Spam	7830.00	978.75
Infected	5863.00	732.88
<b>Total</b>	<b>24212.00</b>	<b>3026.50</b>

## Transparent POP filter

Statistics of processed mail through the transparent POP proxy.

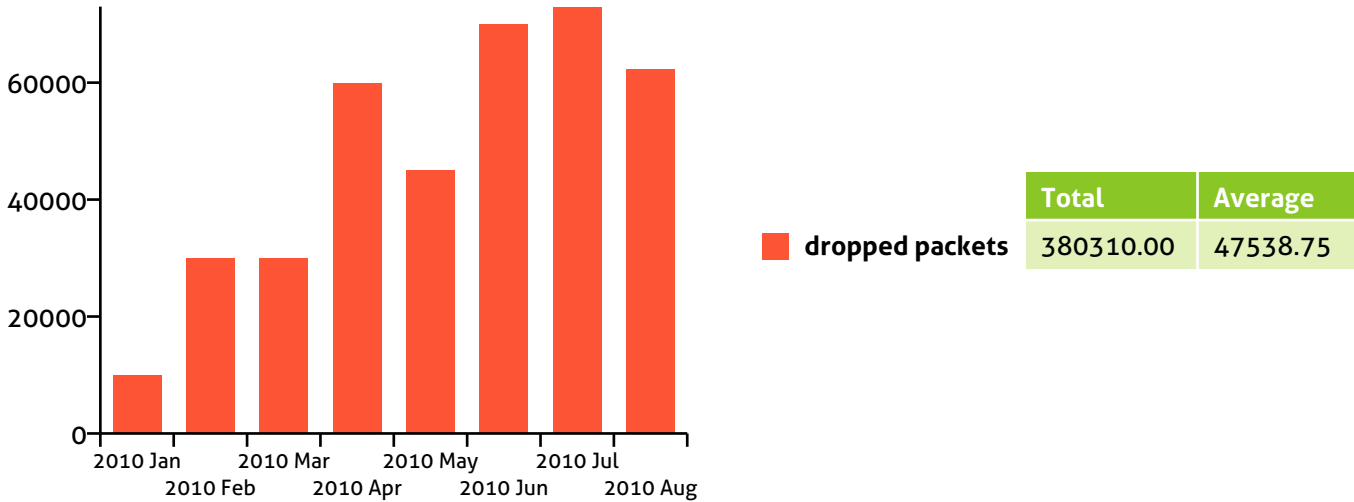


	Total	Average
Clean	997.00	124.62
Spam	783.00	97.88
Infected	783.00	97.88
<b>Total</b>	<b>2563.00</b>	<b>320.38</b>

## Firewall

### Dropped packets

Number of packets dropped by the firewall. Dropped packages are only logged when firewall is explicitly told to do so.



### Top dropped sources

This chart reveals IP address sources which sent more packages which were dropped by the firewall. Dropped packages are only logged when firewall is explicitly told to do so. You may search for infected software from those sources.

Source	Packets
10.45.12.12	27300
192.168.4.5	27000
34.23.12.1	16231
98.34.12.12	16000
154.12.12.12	14500
192.168.5.6	13000
101.45.22.12	12900
46.23.12.12	9000

## File sharing

### Shares which take up more space

This table shows the shares which take much more disk space. The storage space is obtained from an interval polling and may not reflect the same size than the current one.

Share	Size (Mb)	Type
Documents	1341	Share
Projects	834	Share
jsmith	764	User home
ckent	194	User home
llane	173	User home
jholton	86	User home
IT	64	Group home
tsmith	62	User home
Accountability	46	Group home
mariamb	36	User home

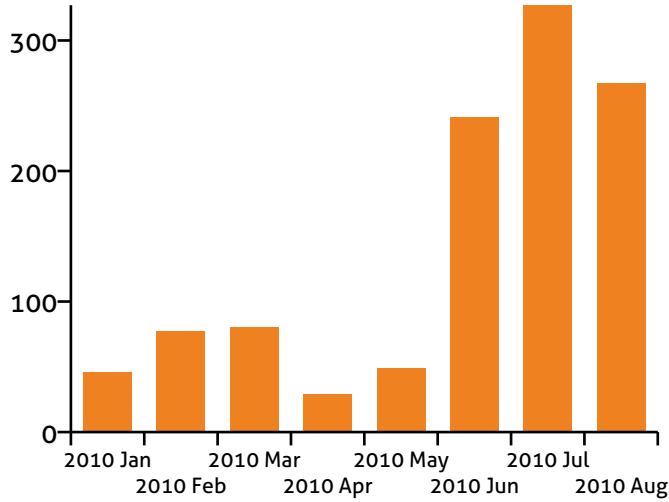
### Shares with more infected files detected

This table shows which shares had a greater number of infected files.

Share	Virus
Documents	123
RRHH	67
jsmith	45
ckent	38
llane	28
jholton	23
IT	18
tsmith	11
Projects	5
mariamb	8

## Activity

Overall file sharing activity, measured in number of operations.

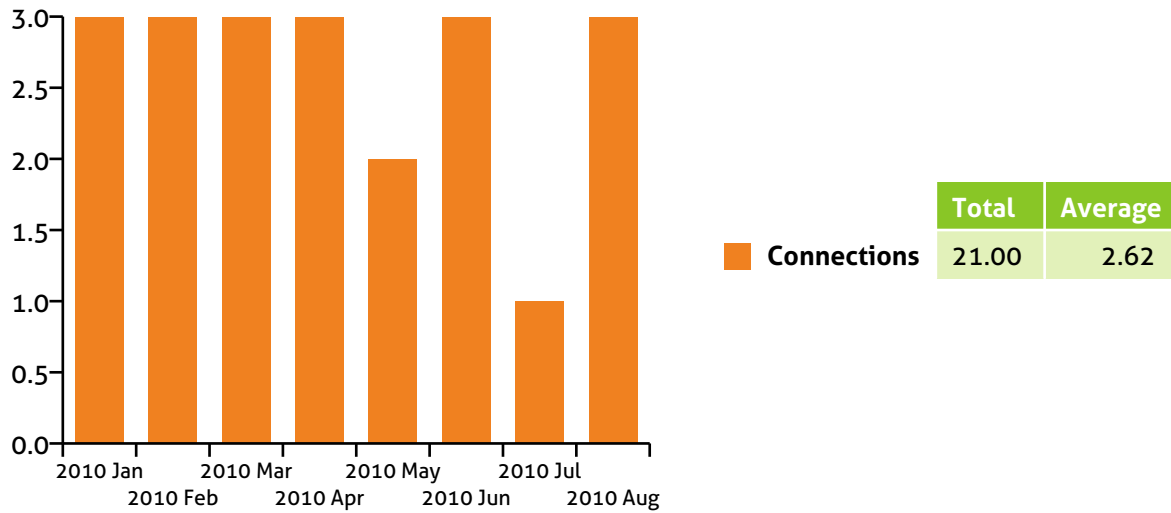


	Total	Average
Operations	1116.00	139.50

## VPN

### Connections from clients

Number of connections from clients to Zentyal's VPN servers.



### Top VPN users

Users who performed more connections to Zentyal's VPN servers. Clients are identified by its certificate common name.

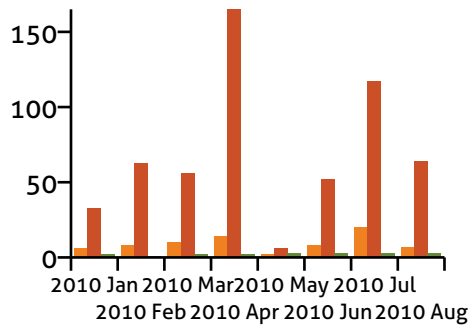
User	Connections
jsmith	3
ckent	3
llane	3
jholton	3
tsmith	2
mariamb	3
lisas	1
bob	3

# Printers

## Printer usage

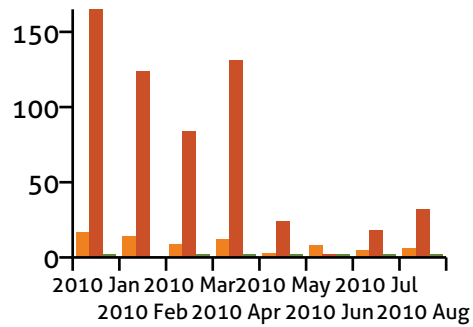
These charts shows the resource usage per printer. That is, the queued jobs, the printed pages and the users who used the printer.

epson



	Total	Average
Queued jobs	75.00	9.38
Printed pages	556.00	69.50
Printer users	19.00	2.38

hplaserjet

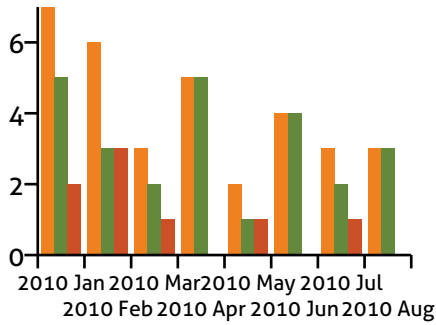


	Total	Average
Queued jobs	74.00	9.25
Printed pages	580.00	72.50
Printer users	15.00	1.88

## Printer jobs by user

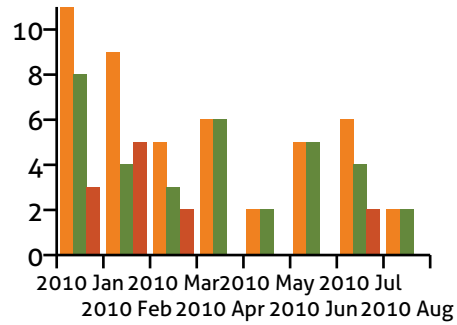
These charts depicts the users who used more the printers. The sum of cancelled and completed jobs turns into the total queued jobs.

### ckent



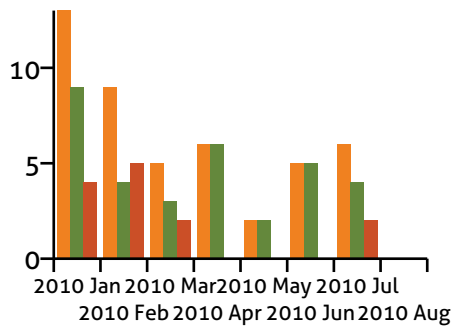
	Total	Average
<b>Queued</b>	33.00	4.12
<b>Completed</b>	25.00	3.12
<b>Cancelled</b>	8.00	1.00

### jholton



	Total	Average
<b>Queued</b>	46.00	5.75
<b>Completed</b>	34.00	4.25
<b>Cancelled</b>	12.00	1.50

### mariamb



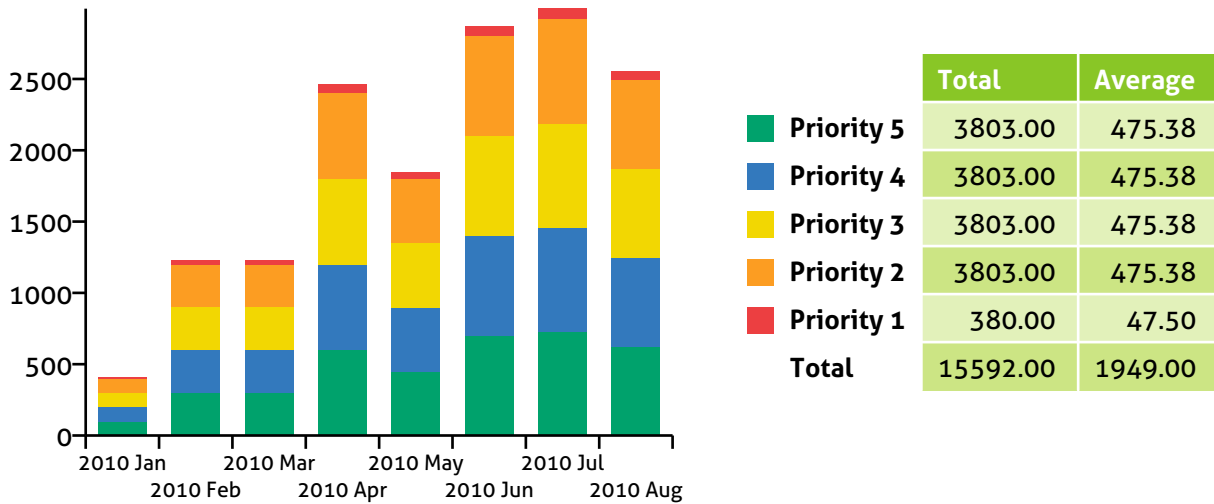
	Total	Average
<b>Queued</b>	46.00	5.75
<b>Completed</b>	33.00	4.12
<b>Cancelled</b>	13.00	1.62

## Intrusion Detection System

The priority numbers have the following rule: **The lower number, the more severe.** Priority 1 - high alert, Priority 5 - low alert.

### IDS Alerts

Number of IDS alerts by severity priority.



### Top IDS alert sources

This table shows the IP address sources which fired the greater number of alerts.

Source	Priority 1	Priority 2	Priority 3	Priority 4	Priority 5
10.45.12.12	10	100	100	100	100
192.168.4.5	30	300	300	300	300
34.23.12.1	30	300	300	300	300
98.34.12.12	60	600	600	600	600
154.12.12.12	45	450	450	450	450
192.168.5.6	70	700	700	700	700
101.45.22.12	73	730	730	730	730
46.23.12.12	62	623	623	623	623



## Security Audit

### Users with crackable password

This is a list of users with a crackable password. It is recommended to take action so that they may change their passwords. The list includes all those users whose password was crackable in the requested date range, but this may not reflect the current password strength.

User name	Full name	Mail address	Strength	Origin
jsmith	John Smith	jsmith@metropolis-review.com	weak	LDAP
ckent	Clark Kent	ckent@dailyplanet.com	weak	LDAP
llane	Louis Lane	llane@dailyplanet.com	weak	LDAP
jholton	John Holton	jholton@dailyplanet.com	weak	LDAP
tsmith	Terry Smith	tsmith@metropolis-review.com	weak	LDAP
mariamb	Mariam Bahan	mariamb@dailyplanet.com	weak	LDAP
lisas	Lisa Stanfield	lisas@metropolis-review.com	weak	LDAP
bob	Bob Guy	bob@dailyplanet.com	weak	LDAP

### Number of users with crackable password

This table show the number of users which have a crackable password. This statistic is collected weekly.

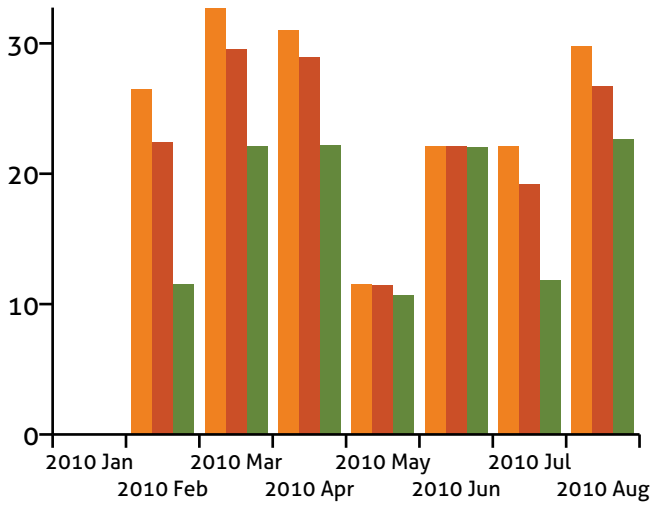
Date	Users with weak password	Users with average password	Total Users	Percentage (%)
2010 Jan	1	10	11	9
2010 Feb	3	30	33	9
2010 Mar	2	30	33	6
2010 Apr	6	37	46	13
2010 May	4	42	46	8
2010 Jun	7	59	66	10
2010 Jul	11	63	74	14
2010 Aug	5	62	70	7

## Network

### Bandwidth Speed

5 tests along the day are done to test your bandwidth speed

Mbps



- Maximum download time
- Average download time
- Minimum download time

#### Average

21.99 Mbps

20.05 Mbps

15.40 Mbps

# Gateway

## System information

### Disk usage

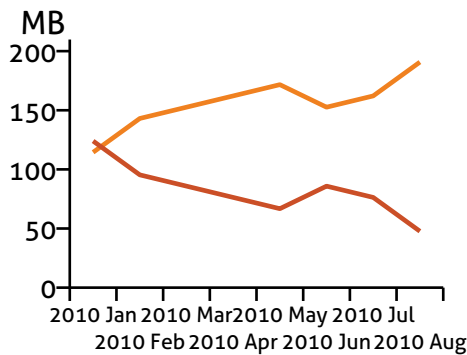
This chart shows how much space is used and free for each filesystem mount point.

#### Variable disk

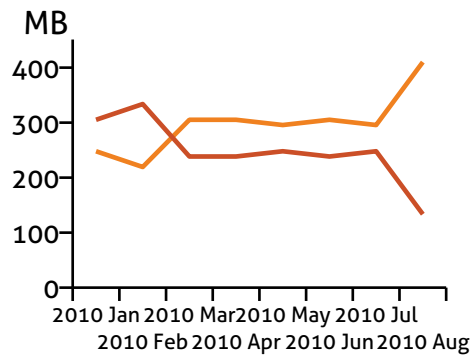
#### System disk

Show the system disk usage also known as root (/)

Show the variable files disk usage whose content is continuously changing during normal system operation such as logs, spool files or mailboxes (/var)



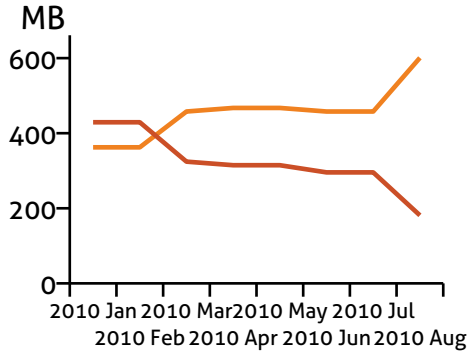
	Latest
Used	190.73 MB
Free	47.68 MB
<b>Total</b>	<b>238.42 MB</b>



	Latest
Used	410.08 MB
Free	133.51 MB
<b>Total</b>	<b>543.59 MB</b>

## Total

Show the total aggregated disk usage from all your disks

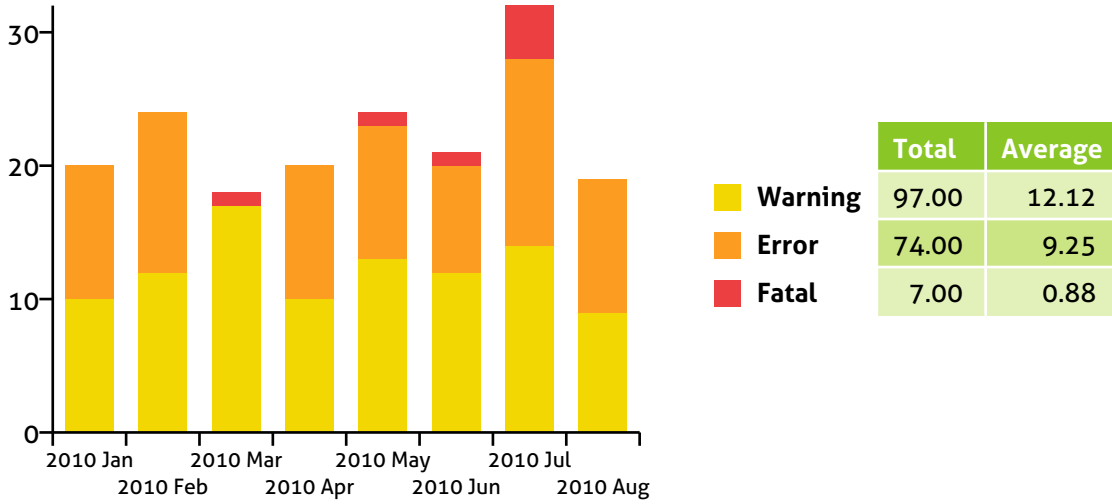


	Latest
Used	600.81 MB
Free	181.20 MB
Total	782.01 MB

## Alerts

### Total alerts

Total number of alerts grouped by level generated by the Zentyal server.

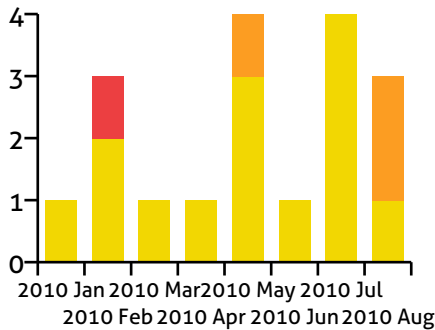


## Alerts by source

This chart breaks the alerts by source to help to identify which features could be causing problems.

### WAN failover

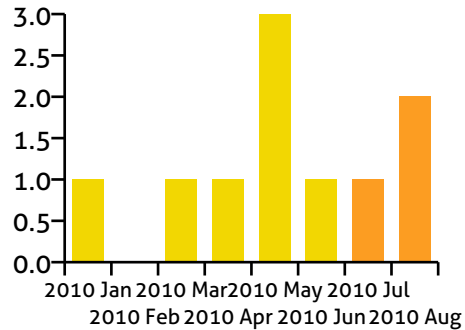
Check the gateways are connected or disconnected and act consequently



	Total	Average
<span style="color: yellow;">■</span> Warning	14.00	1.75
<span style="color: orange;">■</span> Error	3.00	0.38
<span style="color: red;">■</span> Fatal	1.00	0.12

### Configuration backup

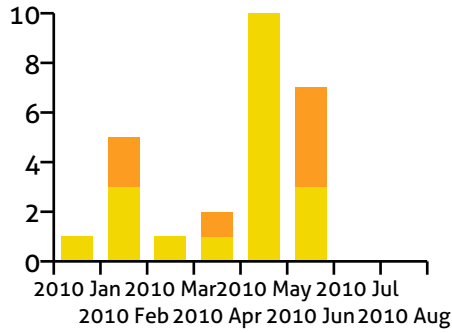
Automatic configuration was backed up correctly



	Total	Average
<span style="color: yellow;">■</span> Warning	7.00	0.88
<span style="color: orange;">■</span> Error	3.00	0.38
<span style="color: red;">■</span> Fatal	0.00	0.00

### Free RAM memory usage

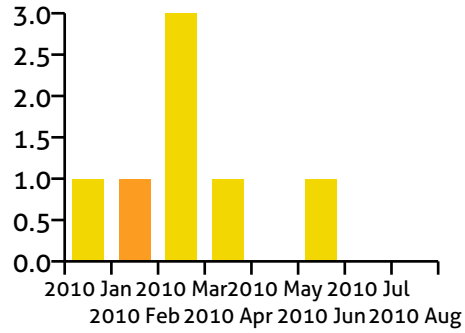
Check if there is enough free physical RAM memory



	Total	Average
<span style="color: yellow;">■</span> Warning	19.00	2.38
<span style="color: orange;">■</span> Error	7.00	0.88
<span style="color: red;">■</span> Fatal	0.00	0.00

### Service

Check if any Zentyal service is not running when it should



	Total	Average
<span style="color: yellow;">■</span> Warning	6.00	0.75
<span style="color: orange;">■</span> Error	1.00	0.12
<span style="color: red;">■</span> Fatal	0.00	0.00

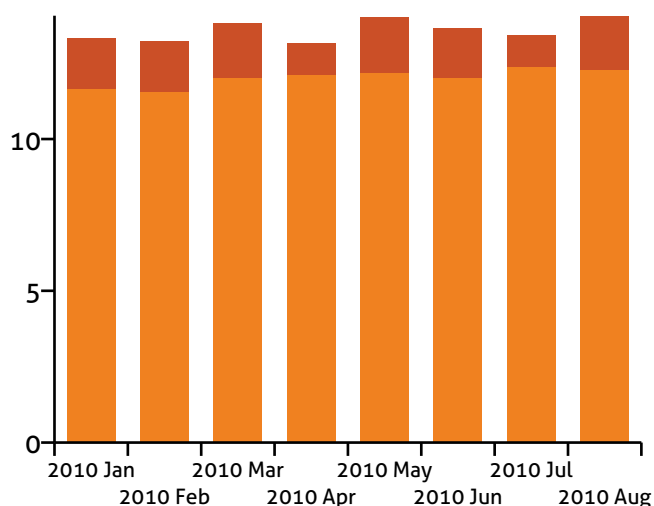
## HTTP Proxy

Within this section, the total HTTP traffic is split into '**Cached traffic**' and '**Internet traffic**'. The cached traffic is the set of object requests (HTML pages, images, ...) that already are in the *cache*, so they could be served directly to the client reducing latency and traffic; Internet traffic are requests which should be retrieved from the Internet.

### Web traffic

This chart shows the total traffic going through the HTTP proxy. The amount of network traffic saved by the HTTP cache is also described.

GB



- Cached traffic
- Internet traffic

Total

Bandwidth saved %

	Total	Average
Cached traffic	96.21 GB	12.03 GB
Internet traffic	12.43 GB	1.55 GB
Total	108.63 GB	13.58 GB
Bandwidth saved %	88.56 GB	88.56 GB

### Top domains

The Internet domains most accessed by your network using the HTTP proxy.

Domain	Traffic (GB)	Cached traffic (%)	Internet traffic (%)	Visits
widgets.org	1.02	63.636	36.364	2435
google.com	0.88	57.447	46.809	2134
pubmed.org	0.75	83.750	16.250	1456
newsforge.com	0.62	50.746	49.254	1257
oreilly.com	0.22	70.833	29.167	1045
nytimes.com	0.19	60.000	40.000	1043
europress.com	0.16	52.941	47.059	964
delicious.com	0.09	80.000	20.000	879



## Top blocked domains

The domains which have been blocked more frequently by the content filter.

Domain	Visits
facebook.com	235
youtube.com	214
sports.com	156
digg.com	127
reddit.com	105
orkut.com	101
betandwin.com	96
match.com	87

## Top traffic by IP

This table lists the IP addresses which received more data through the HTTP proxy and the traffic statistics.

IP	Traffic (MB)	Cached traffic (%)	Internet traffic (%)	Visits
192.168.100.143	934.60	57.143	42.857	2435
192.168.7.5	829.70	52.874	47.126	2134
192.168.7.23	638.96	61.194	38.806	1456
192.168.100.32	410.08	79.070	25.581	1257
192.168.7.151	305.18	81.250	18.750	1045
192.168.7.6	257.49	55.556	44.444	1043
192.168.100.34	181.20	47.368	52.632	964
192.168.100.121	133.51	67.857	32.143	879

## Top blocked traffic by IP

IP addresses had more requests blocked by the proxy and the number of denied requests.

IP Address	Visits
192.168.7.4	393
192.168.100.5	326
192.168.7.34	311
192.168.7.67	302
192.168.100.35	293
192.168.7.9	275
192.168.7.89	267
192.168.7.12	223

## Top traffic by subnet

This table lists the sub-networks which received more traffic through the HTTP proxy and their traffic statistics. In order to calculate the sub-networks a netmask of 24 bits to all the requesters' IP addresses is assumed.

Subnet	Traffic (GB)	Cached traffic (GB)	Internet traffic (GB)	Visits
192.168.7.0	9.03	5.96	3.07	253335
192.168.100.0	8.01	5.40	2.61	231334

## Top blocked traffic by subnet

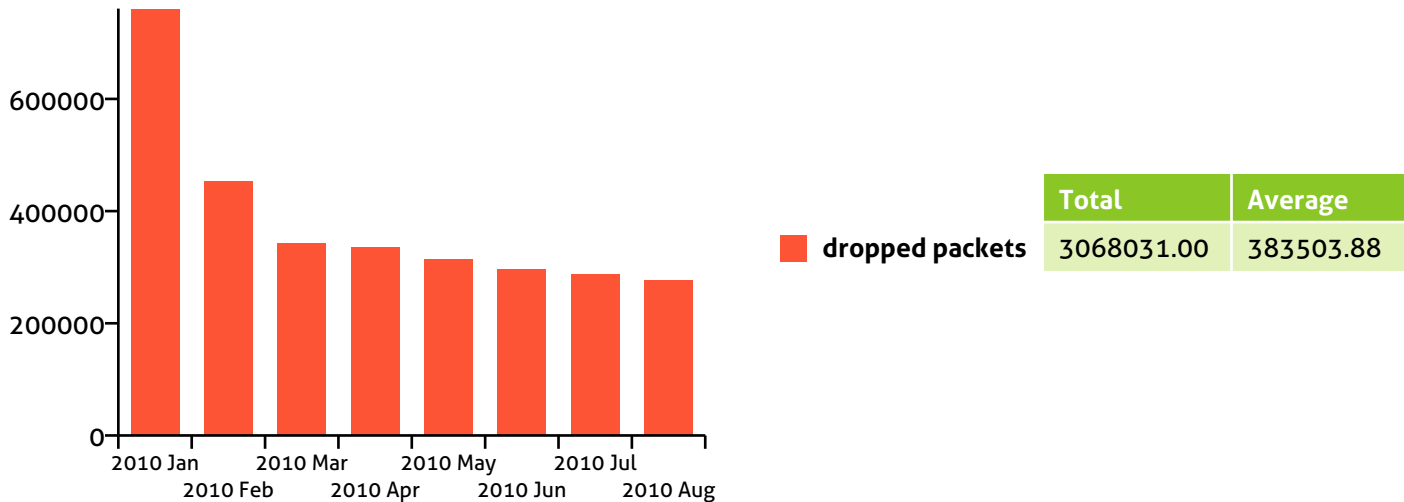
This table shows which sub-networks had more requests blocked by the proxy and the number of denied requests. In order to calculate the sub-networks a netmask of 24 bits to all the requesters' IP addresses is assumed.

Subnet	Visits
192.168.7.0	6784
192.168.100.0	4567

## Firewall

### Dropped packets

Number of packets dropped by the firewall. Dropped packages are only logged when firewall is explicitly told to do so.



### Top dropped sources

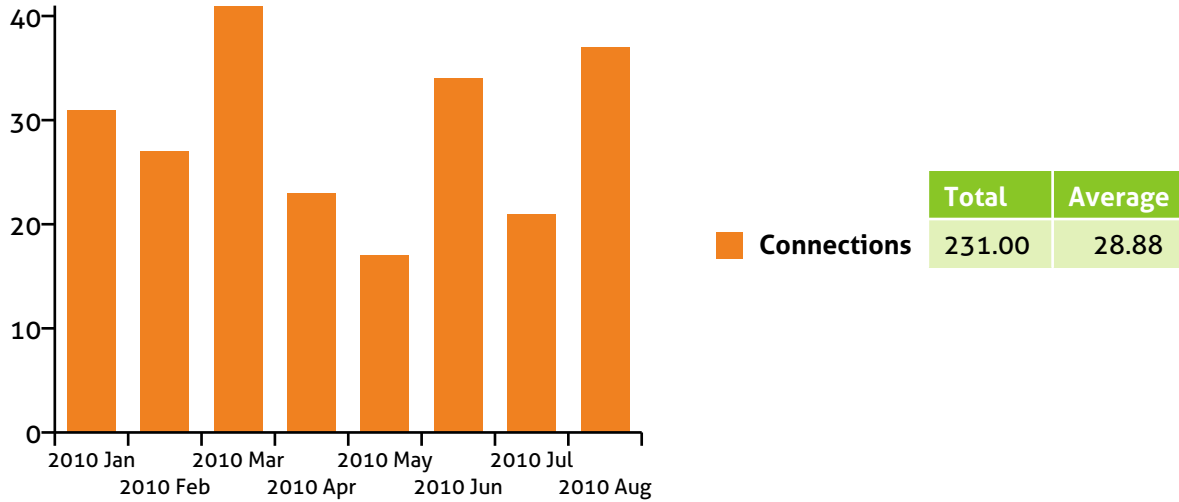
This chart reveals IP address sources which sent more packages which were dropped by the firewall. Dropped packages are only logged when firewall is explicitly told to do so. You may search for infected software from those sources.

Source	Packets
10.45.7.12	7340
192.168.4.5	5670
34.23.12.1	4730
98.34.12.12	4254
154.12.12.12	3637
192.168.5.6	3265
101.45.22.12	2884
46.23.12.12	2423

## VPN

### Connections from clients

Number of connections from clients to Zentyal's VPN servers.



### Top VPN users

Users who performed more connections to Zentyal's VPN servers. Clients are identified by its certificate common name.

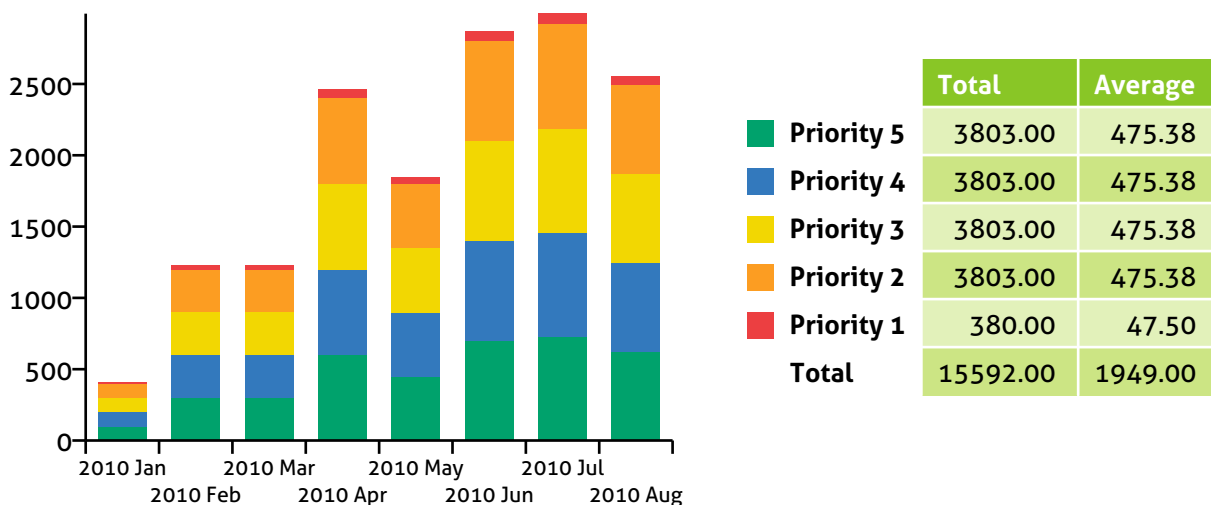
User	Connections
wstelte	178
thall	151

## Intrusion Detection System

The priority numbers have the following rule: **The lower number, the more severe.** Priority 1 - high alert, Priority 5 - low alert.

### IDS Alerts

Number of IDS alerts by severity priority.



### Top IDS alert sources

This table shows the IP address sources which fired the greater number of alerts.

Source	Priority 1	Priority 2	Priority 3	Priority 4	Priority 5
10.45.12.12	10	100	100	100	100
192.168.4.5	30	300	300	300	300
34.23.12.1	30	300	300	300	300
98.34.12.12	60	600	600	600	600
154.12.12.12	45	450	450	450	450
192.168.5.6	70	700	700	700	700
101.45.22.12	73	730	730	730	730
46.23.12.12	62	623	623	623	623

## Office server

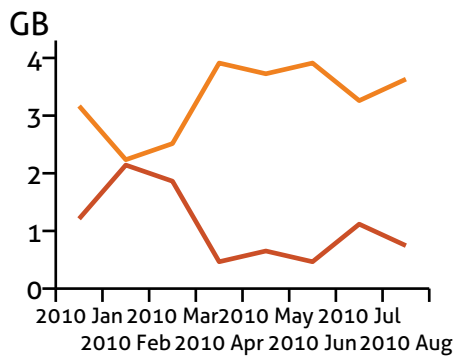
### System information

#### Disk usage

This chart shows how much space is used and free for each filesystem mount point.

#### System disk

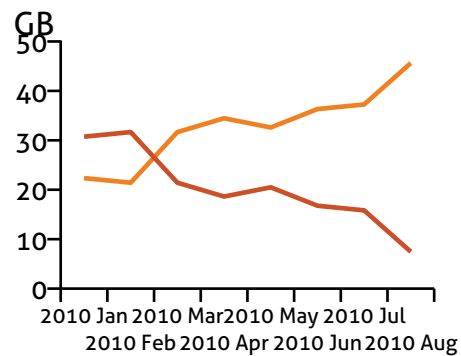
Show the system disk usage also known as root (/)



	Latest
Used	3.63 GB
Free	0.75 GB
<b>Total</b>	<b>4.38 GB</b>

#### User disk

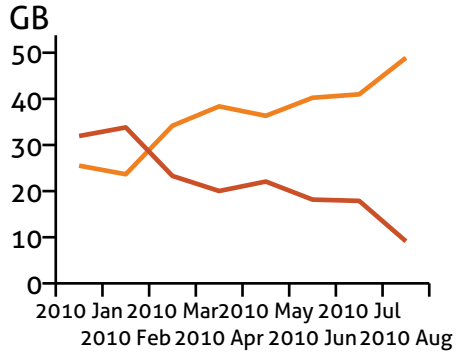
Show the user disk usage where the user homes are stored (/home)



	Latest
Used	45.63 GB
Free	7.45 GB
<b>Total</b>	<b>53.09 GB</b>

## Total

Show the total aggregated disk usage from all your disks

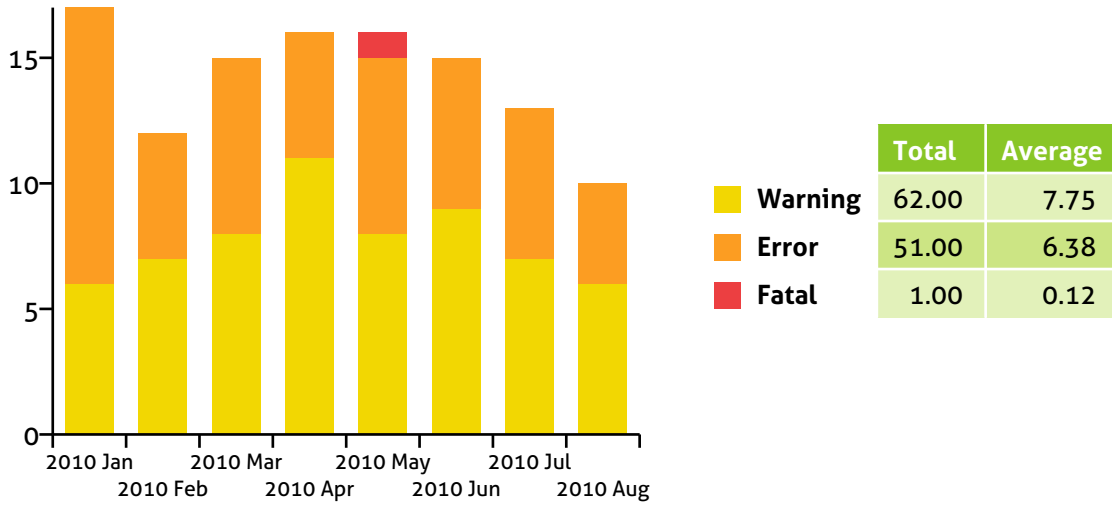


	Latest
<span style="color: orange;">■</span> <b>Used</b>	48.89 GB
<span style="color: red;">■</span> <b>Free</b>	9.13 GB
<b>Total</b>	58.02 GB

# Alerts

## Total alerts

Total number of alerts grouped by level generated by the Zentyal server.



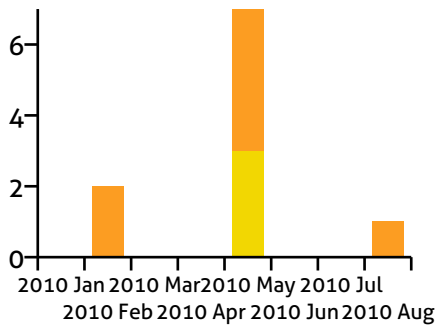


## Alerts by source

This chart breaks the alerts by source to help to identify which features could be causing problems.

### Configuration backup

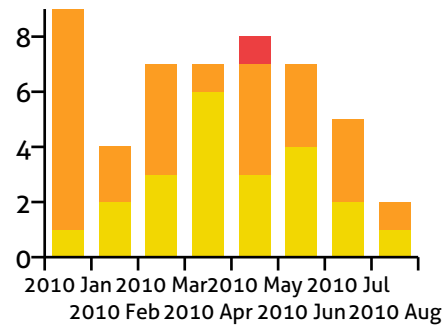
Automatic configuration was backed up correctly



	Total	Average
<span style="color: yellow;">■</span> Warning	3.00	0.38
<span style="color: orange;">■</span> Error	7.00	0.88
<span style="color: red;">■</span> Fatal	0.00	0.00

### Free RAM memory usage

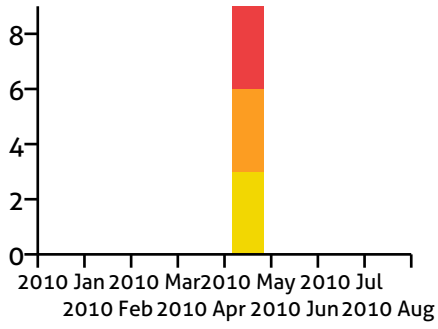
Check if there is enough free physical RAM memory



	Total	Average
<span style="color: yellow;">■</span> Warning	22.00	2.75
<span style="color: orange;">■</span> Error	26.00	3.25
<span style="color: red;">■</span> Fatal	1.00	0.12

## Service

Check if any Zentyal service is not running when it should

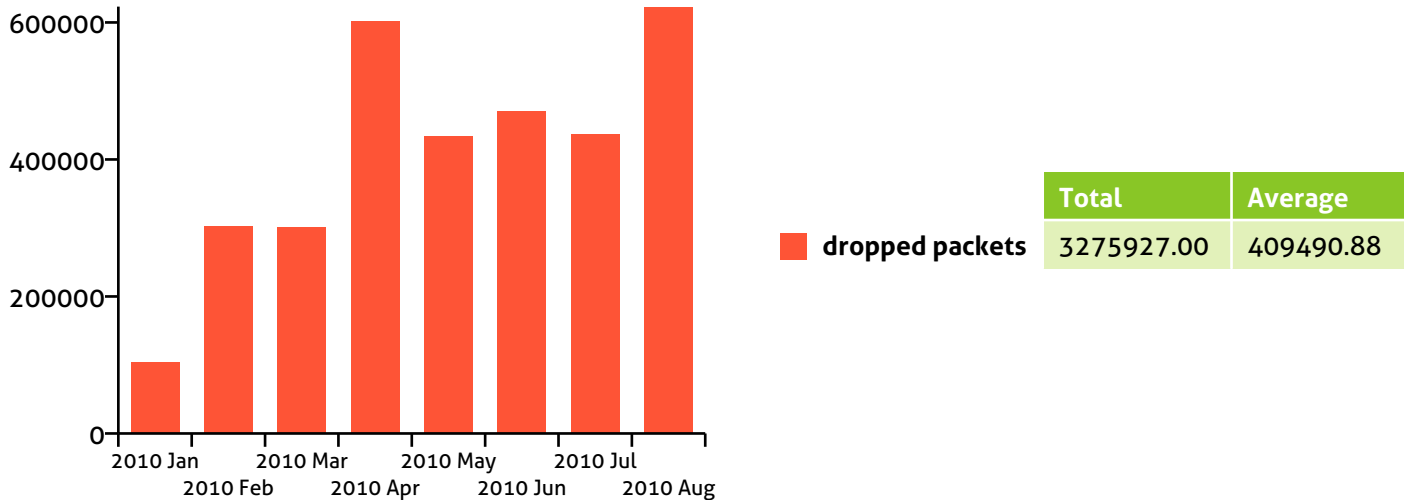


	Total	Average
 <b>Warning</b>	3.00	0.38
 <b>Error</b>	3.00	0.38
 <b>Fatal</b>	3.00	0.38

## Firewall

### Dropped packets

Number of packets dropped by the firewall. Dropped packages are only logged when firewall is explicitly told to do so.



### Top dropped sources

This chart reveals IP address sources which sent more packages which were dropped by the firewall. Dropped packages are only logged when firewall is explicitly told to do so. You may search for infected software from those sources.

Source	Packets
192.168.7.4	104312
192.168.100.5	90301
192.168.7.34	90011
192.168.7.67	64013
192.168.100.35	43211
192.168.7.9	21700
192.168.7.89	21322
192.168.7.12	20323

## File sharing

### Shares which take up more space

This table shows the shares which take much more disk space. The storage space is obtained from an interval polling and may not reflect the same size than the current one.

Share	Size (Mb)	Type
Documents	1200	Share
Projects	780	Share
thall	357	User home
agilb	221	User home
orlandog	167	User home
terryst	67	User home
IT	67	Group home
btabuenca	59	User home
Management	46	Group home
christian	36	User home

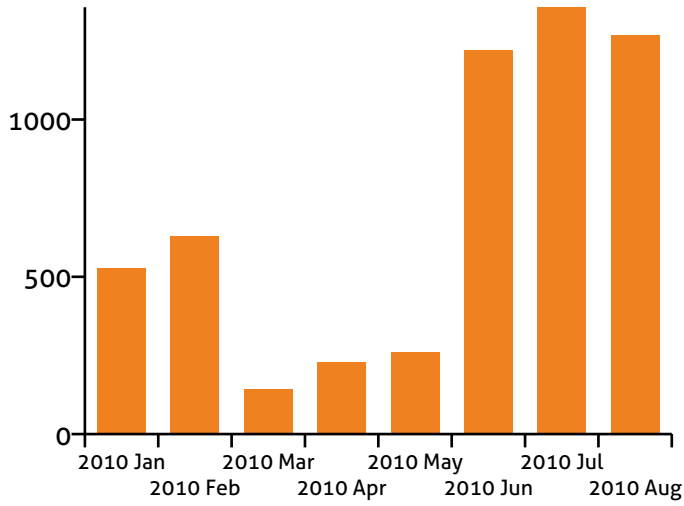
### Shares with more infected files detected

This table shows which shares had a greater number of infected files.

Share	Virus
Documents	167
RRHH	120
thall	78
agilb	67
orlandog	35
terryst	28
IT	6
btabuenca	5
Projects	4
christian	2

## Activity

Overall file sharing activity, measured in number of operations.



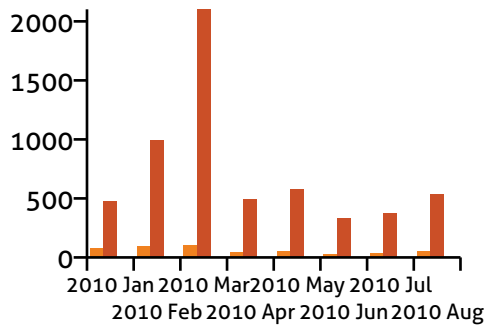
	Total	Average
Operations	5627.00	703.38

## Printers

### Printer usage

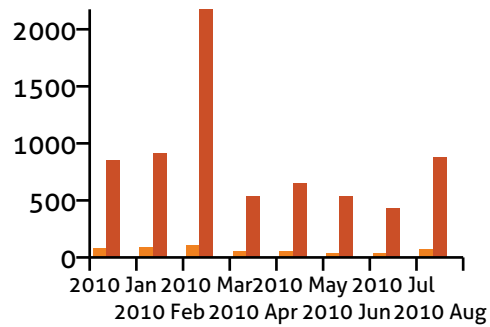
These charts shows the resource usage per printer. That is, the queued jobs, the printed pages and the users who used the printer.

**epsonbw**



	Total	Average
Queued jobs	500.00	62.50
Printed pages	5895.00	736.88
Printer users	24.00	3.00

**hpcolor**

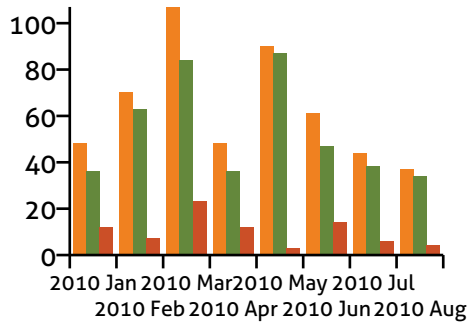


	Total	Average
Queued jobs	544.00	68.00
Printed pages	6979.00	872.38
Printer users	22.00	2.75

## Printer jobs by user

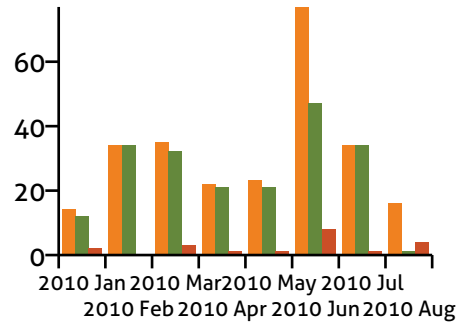
These charts depicts the users who used more the printers. The sum of cancelled and completed jobs turns into the total queued jobs.

### btabuenca



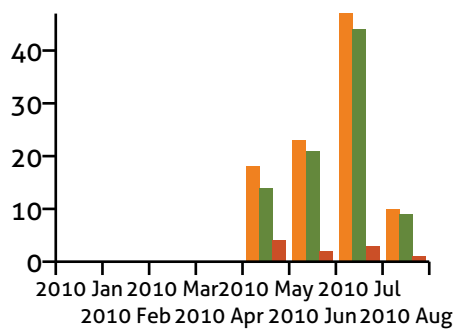
	Total	Average
Queued	505.00	63.12
Completed	425.00	53.12
Cancelled	81.00	10.12

### christian



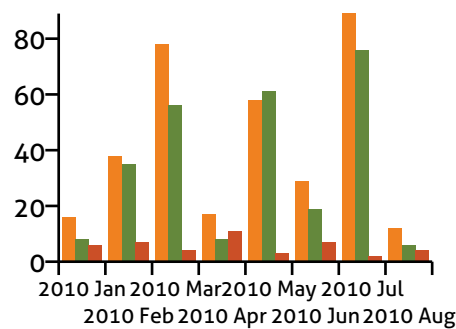
	Total	Average
Queued	255.00	31.88
Completed	202.00	25.25
Cancelled	20.00	2.50

### mstelte



	Total	Average
Queued	98.00	12.25
Completed	88.00	11.00
Cancelled	10.00	1.25

### thall



	Total	Average
Queued	337.00	42.12
Completed	269.00	33.62
Cancelled	44.00	5.50

## Security Audit

### Users with crackable password

This is a list of users with a crackable password. It is recommended to take action so that they may change their passwords. The list includes all those users whose password was crackable in the requested date range, but this may not reflect the current password strength.

User name	Full name	Mail address	Strength	Origin
thall	Terry Hall	thall@widgets.com	weak	LDAP
agilb	Astrud Gilberto	agilb@widgets.com	weak	LDAP
orlandog	Orlando Garcia	orlandog@widgets.com	weak	LDAP
terrys	Terry Stonecraft	terrys@widgets.com	weak	LDAP
btabuenca	Belen Tabuenca	btabuenca@widgets.com	weak	LDAP
christian	Christian Gabor	christian@widgets.com	weak	LDAP
wstelte	William Stelee	wstelte@widgets.com	weak	LDAP
mstelte	Malcom Stelte	mstelte@widgets.com	weak	LDAP

### Number of users with crackable password

This table show the number of users which have a crackable password. This statistic is collected weekly.

Date	Users with weak password	Users with average password	Total Users	Percentage (%)
2010 Jan	1	11	10	9
2010 Feb	3	33	30	9
2010 Mar	3	33	30	9
2010 Apr	6	54	60	11
2010 May	4	41	45	9
2010 Jun	7	66	70	10
2010 Jul	7	64	73	9
2010 Aug	8	54	62	14



## Backup

### Backup Policy

Current backup policy with the configuration settings

Method	Zentyal cloud
Encryption	Simmetric key encryption
Full backup policy	Monthly
Incremental backup policy	Daily
Backup process starts at	1:00
Retention policy type	Number of full copies to keep
Retention policy set to	20

### Backup domains

These backup domains are included along with any manually included path

<b>Backup domain</b>
Shares, users and groups homes and profiles
FTP
Users mailboxes
Zentyal Server logs database

## Backup storage usage

This chart shows how much space is used and available to use in the backup storage. Note that changes in the selected storage could dramatically alter this data.

