

A blue-tinted globe of the Earth is shown on the left side of the slide, with the continents of North and South America visible. The background is a gradient of blue and purple. The title text is centered over the globe and the background.

A Black Hat Vulnerability Risk Assessment




We are:

David Mortman - Echelon One
Alex Hutton - Verizon Business
Jerry Dixon - Team Cymru
Dan Crisp - Barclays



A Vulnerability List Isn't Enough



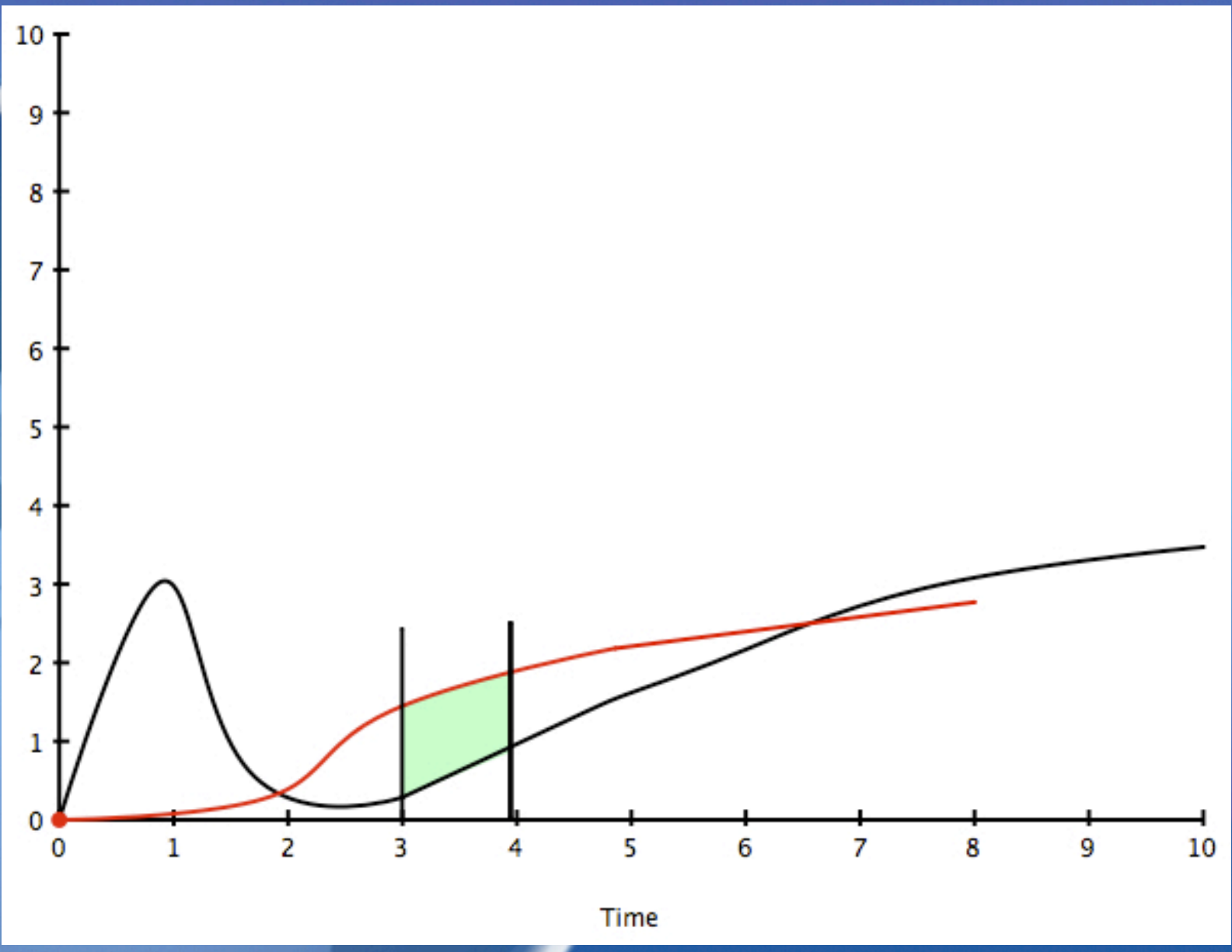
The Sexiest Vuln Isn't The One
You Should Be Worrying About.



What About CVSS?

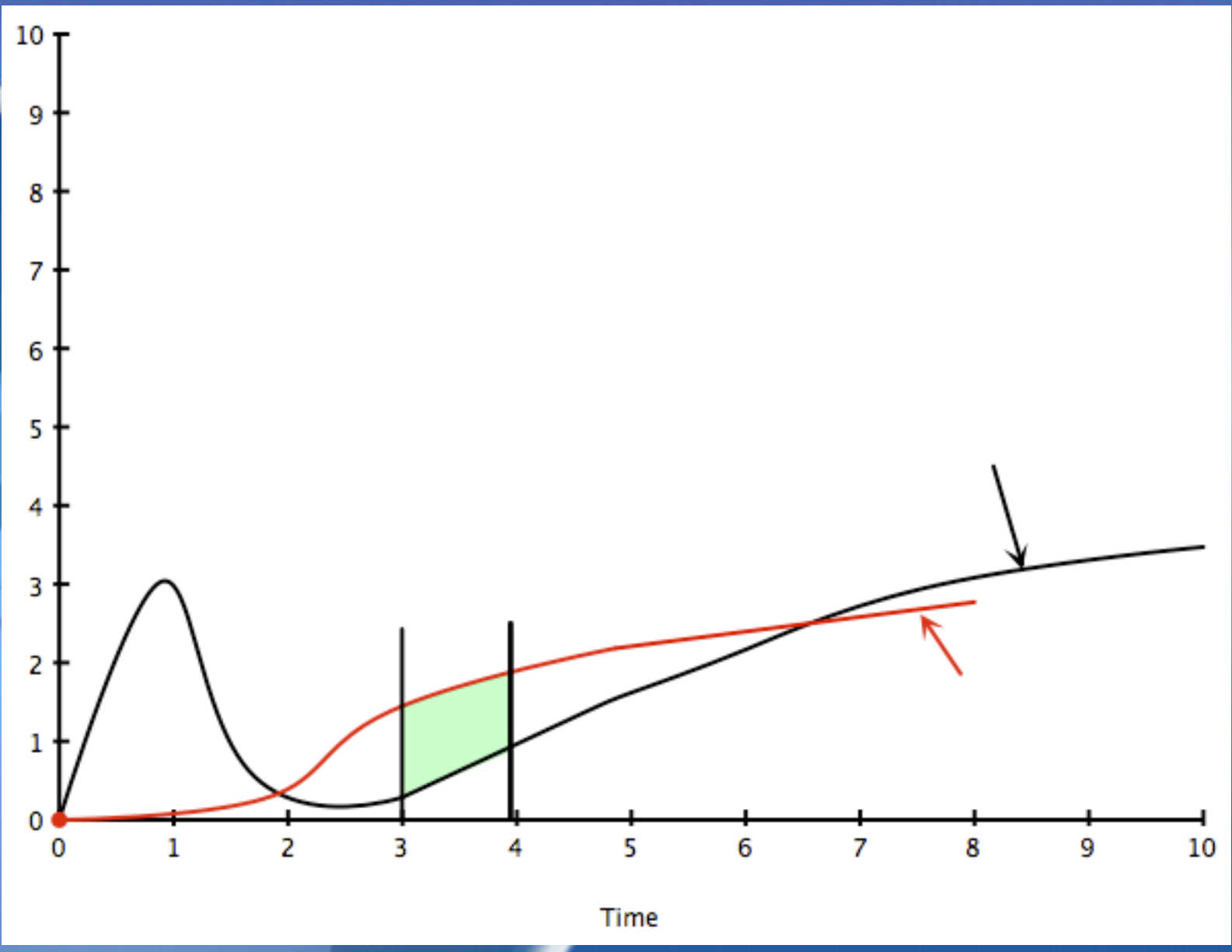
The image features a blue-tinted globe of the Earth on the left side, showing the continents of North and South America. The background is a gradient of blue and purple. The title text is centered over the globe and background.

The Mortman/Hutton Model for Expectation of Exploit Use

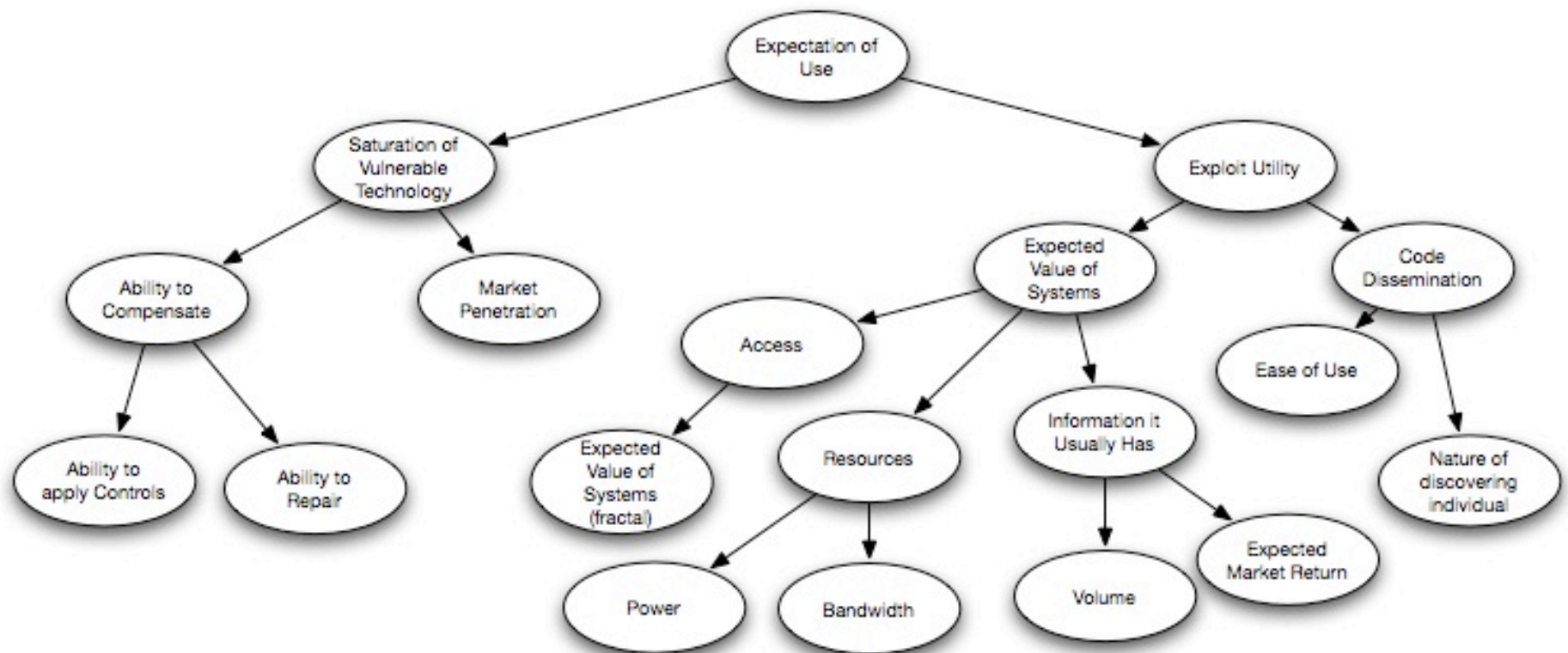




Microsoft Security Advisory
(972890)



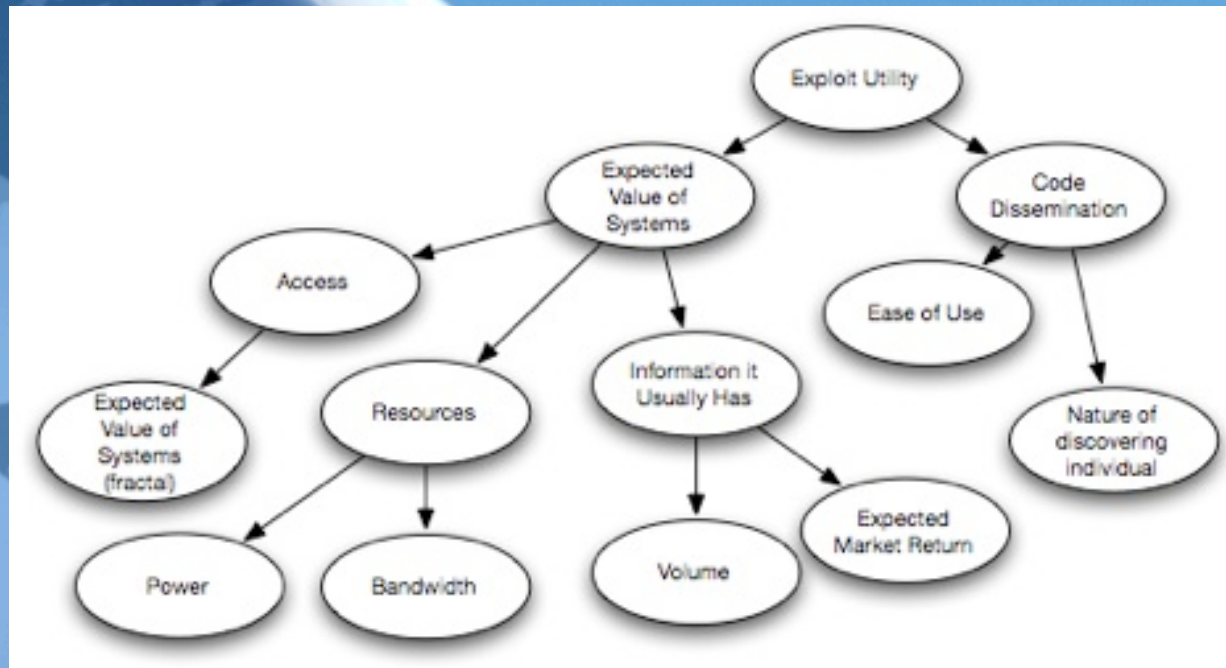
Mortman/Hutton Model for Expectation of Exploit Use



Saturation of Vulnerable Technology

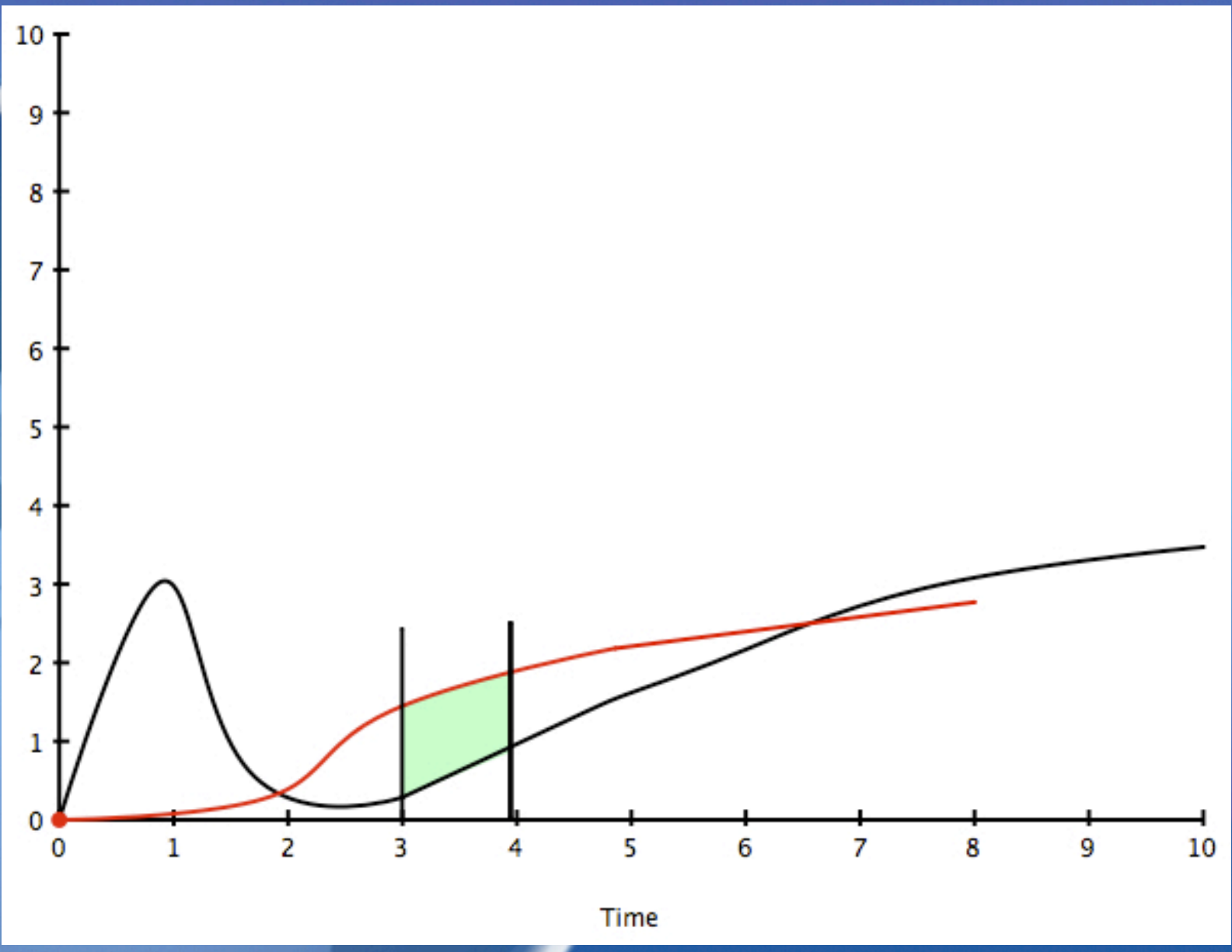


Exploit Utility





Vulnerabilities Released At Blackhat



The image features a blue-tinted view of the Earth from space, showing the curvature of the planet and some landmasses. Overlaid on this background is the text "Q&A" in a large, white, sans-serif font. The text is centered horizontally and has a slight drop shadow, making it stand out against the blue background.

Q&A