

# B O S T E C H   C H A I N B U I L D E R   E S B

Bostech helps companies efficiently integrate software applications using a standards-based middleware solution.

The ChainBuilder ESB solution utilizes graphical interfaces to allow rapid SOA deployment through drag-and-drop functionality coupled with easy to use step-by-step wizards.



## Top Strategic Reasons to Advance Your Service Oriented Architecture with ChainBuilder ESB

### Don't get tied into a proprietary vendor solution.

ChainBuilder ESB is compliant with the widely approved open ESB standard — JBI (Java Business Integration). Create and tailor your own components or mix and match with any other JBI vendor or community supplied components for a custom Enterprise Service Bus.

### Plug disparate software systems into a strategic ESB/SOA infrastructure.

Leverage your investment in mature applications with straight-forward integration paths to disparate systems. In addition to standard XML and WebServices support, use ChainBuilder ESB to create message definitions for fixed, variable, and other non-XML message formats and easily connect to non-WebServices protocols, like FTP, File and TCP/IP.

### Develop solutions with familiar and easy to use graphical user interfaces.

Bostech chose the popular Eclipse IDE as the standard development platform for ChainBuilder ESB. Developers can use this familiar interface with accompanying wizards and extensive drag and drop functionality to easily create robust service components via this canvas and tool palette environment.

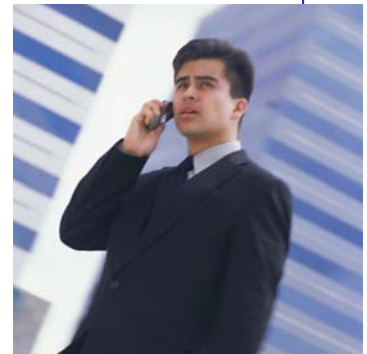
### Monitor and Control Run-time Components through AJAX-based Web Interface.

Remotely manage your Enterprise Service Bus through ChainBuilder ESB's Administrative Console. Use this AJAX-based web interface to perform remote monitoring, administration and alerts on run-time JBI components and ChainBuilder ESB server modules.

### Rapidly deploy solutions leveraging pre-built components.

ChainBuilder ESB includes feature-rich communication and service components normally found in expensive commercial packages. In addition, developers can complete solutions faster by using templates to create and customize standard or variant versions of vertical message formats, like EDI X12 and Healthcare HL7 messages.

**bostech**<sup>™</sup>  
corporation





The ChainBuilder ESB community includes an open development portal with product information, forums, wiki, and other tools. <http://www.chainforge.net>

**Binding Components**

SOA environments must reach beyond the common HTTP/SOAP Web Services. Leverage your technology investments, with our traditional communication Binding Components for protocols, like file, FTP, SMTP, POP3, TCP/IP as well as database integrations.

**JBI Container Agnostic**

Our Enterprise Service Bus is designed to run with any JBI compliant Container, allowing developers to make use of the easy-to-use ChainBuilder ESB add-ons while independently selecting a JBI container as consistent with corporate policies.

**Eclipse Plug-Ins**

The heart of designing your JBI application is in the suite of Eclipse plug-ins. Each provides a graphical interface with functionality ranging from visually mapping source to target message formats to designing a component flow on an IDE canvas.

**Common Service Layer**

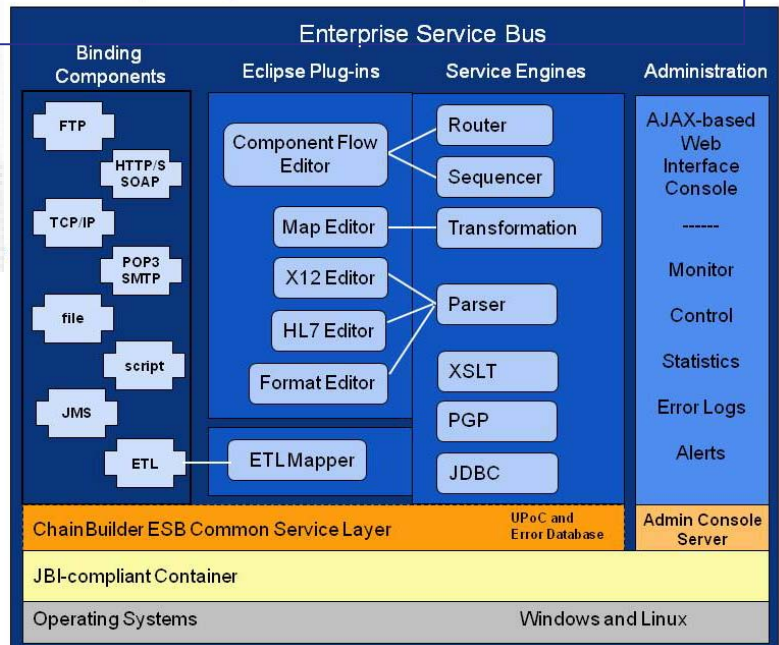
Extending functionality beyond the JBI specification, ChainBuilder ESB provides an optional Common Service Layer to enhance error data gathering and to provide an easy entry point for custom controls.

**Service Engines**

The workhorse components for the ESB are the Service Engines. Each component manage such critical data manipulation as message parsing and transformation, content-based routing, sequencing, and JDBC access to relational databases.

**Web-based Administration**

Manage your Enterprise Service Bus through the Administration Console by performing remote web administration, monitoring and alerts on run-time JBI components and other ChainBuilder ESB server modules.

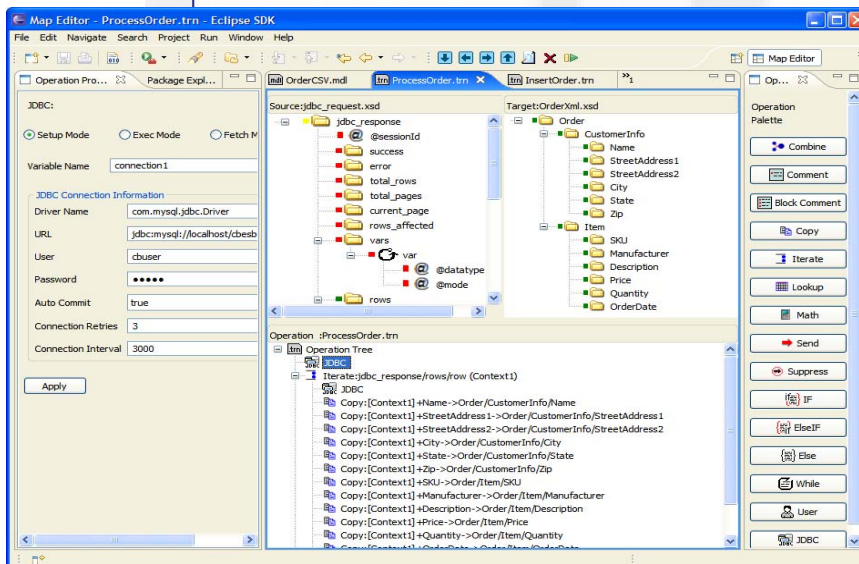
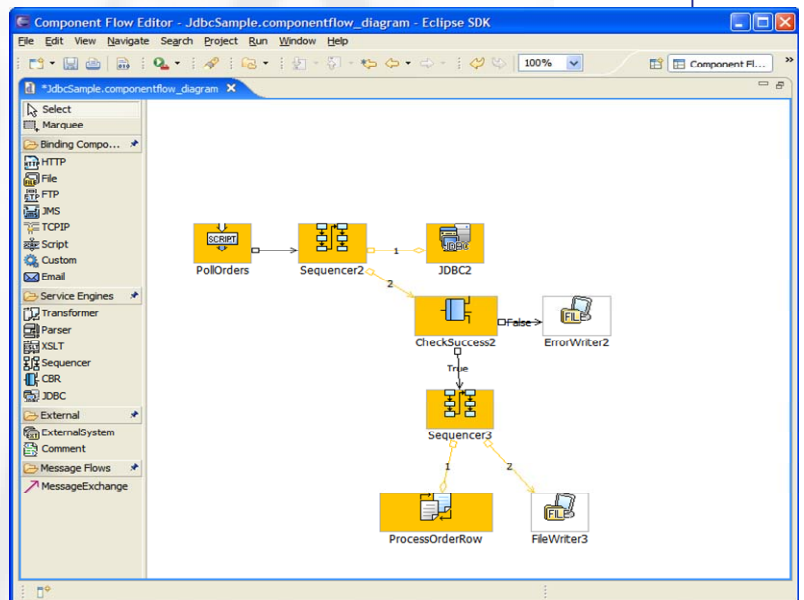




*ChainBuilder ESB is designed for ease of use and the rapid deployment of an Enterprise Service Bus. A set of graphical interfaces simplifies the mapping of data and components.*

### Component Flow Editor

The Component Flow Editor provides an easy to use graphical method for creating JBI Service Assemblies. Using the popular Eclipse IDE platform, developers can create new and customize existing components through drag and drop, wizard and fill-in forms functionality. The Custom Component Framework allows any user-defined JBI component to be configured within the flow.



### Map Editor

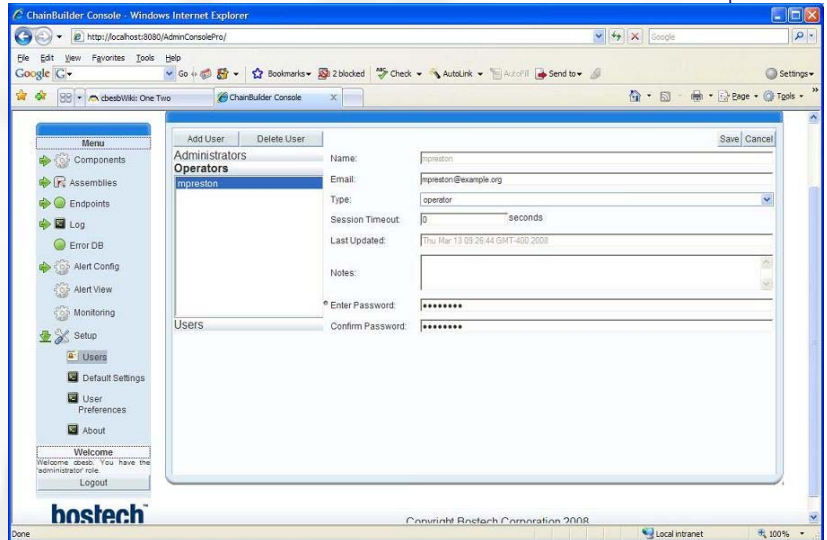
ChainBuilder ESB is built upon the JBI standard, allowing by its very definition, XML messages to be easily configured, mapped, and processed. However, there are many legacy systems that have their own unique non-XML messaging requirements. ChainBuilder ESB can create integration components for non-XML formatted messages through several editors, including Map (shown), and HL7 and X12 variant editors.



*Bostech blends 15 years experience in the integration space into an attractively priced, easy to use, middleware solution.*  
ChainBuilder ESB

### Web Based Administration

The AJAX-based web interface provides remote access to perform management tasks, like install components, deploy applications, view server runtime log files and alerts. Individual components and endpoints within components have JBI lifecycle functionality available including start, stop and shutdown.



### ChainBuilder ESB Specifications

- Operating Systems:** Windows and Linux (x86/GTK2)
- System Requirements:** P4/1GB RAM/10GB HD min; dual 3.0Ghz/2GB RAM preferred
- Languages:** English and Chinese

## Bostech Corporation

[www.bostechcorp.com](http://www.bostechcorp.com)

Bostech Corporation is a team of pioneers in the business integration software market place. Bostech's ChainBuilder ESB is a prominent cross-industry integration tool that helps businesses seamlessly share, exchange, and transact critical information with their customers, suppliers, partners and employees. Bostech Corporation is privately owned and has corporate sales and development operations in the United States and China.



Bostech Corporation  
2800 Corporate Exchange Drive  
Suite 260  
Columbus, OH 43231

Phone: 614-918-2880  
Email: [info@bostechcorp.com](mailto:info@bostechcorp.com)  
Corporate: [www.bostechcorp.com](http://www.bostechcorp.com)  
Community: [www.chainforge.net](http://www.chainforge.net)

