

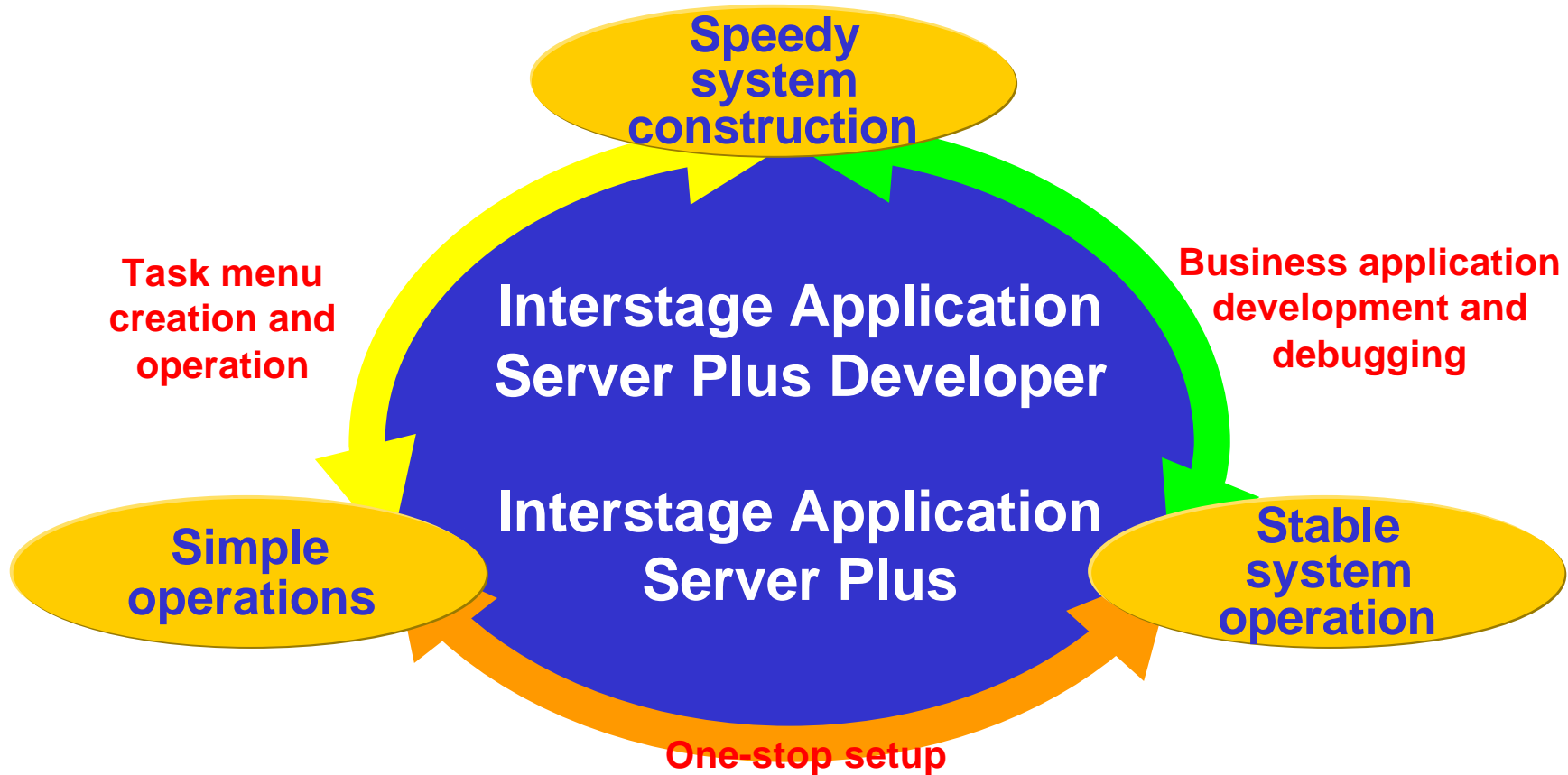
A vertical decorative graphic on the left side of the slide, featuring a dark blue background with a lighter blue, glowing, abstract shape that resembles a stylized letter 'I' or a vertical bar with a rounded top.

June 2003

Fujitsu Limited

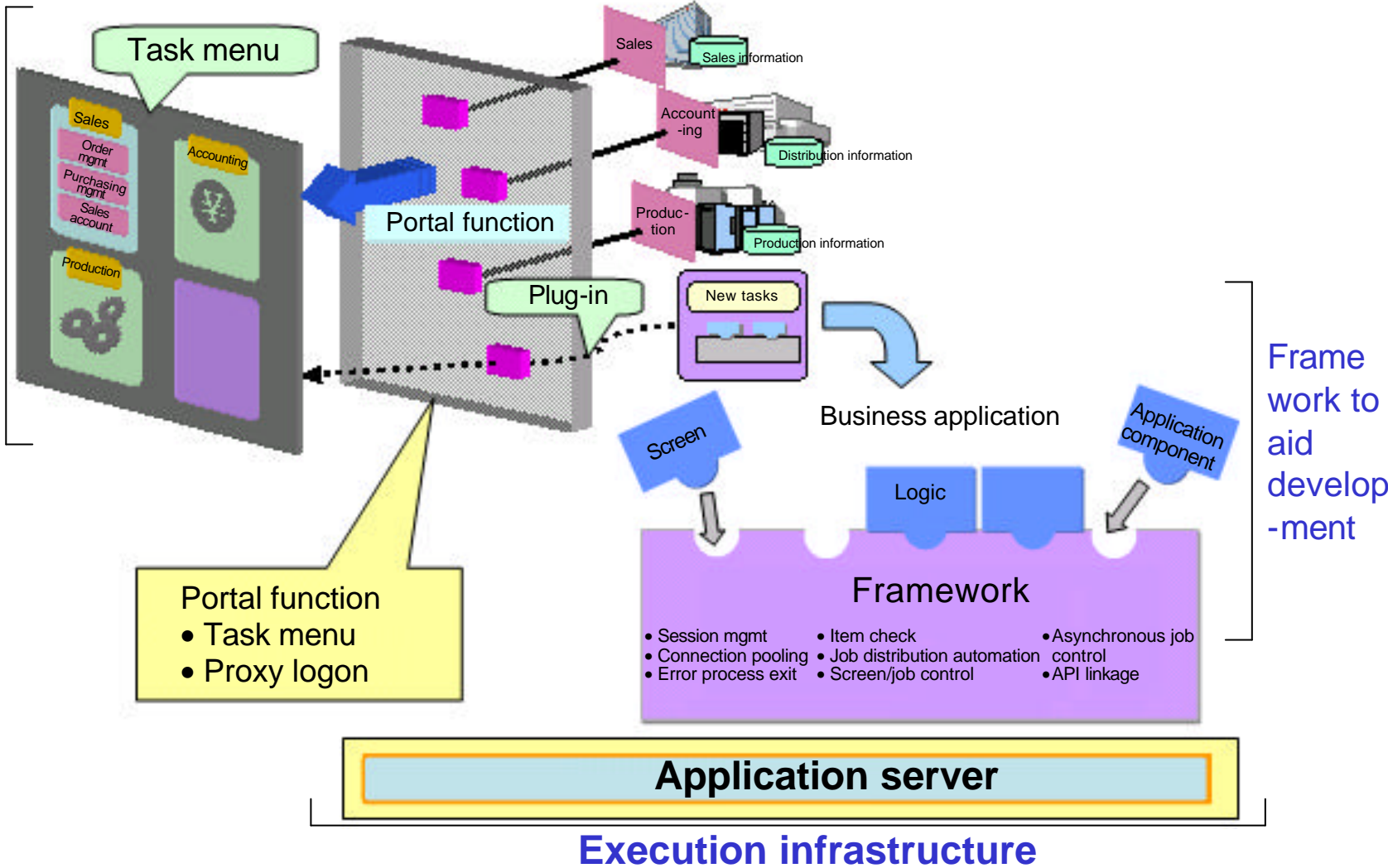
What is Interstage Application Server Plus?

- ❖ Interstage Application Server Plus is an application server product that simplifies a range of operations, from the creation of task menus through to the development of business applications, and shortens the time needed to construct enterprise systems.



Overview of Interstage Application Server Plus

Easy-to-use
portal
function

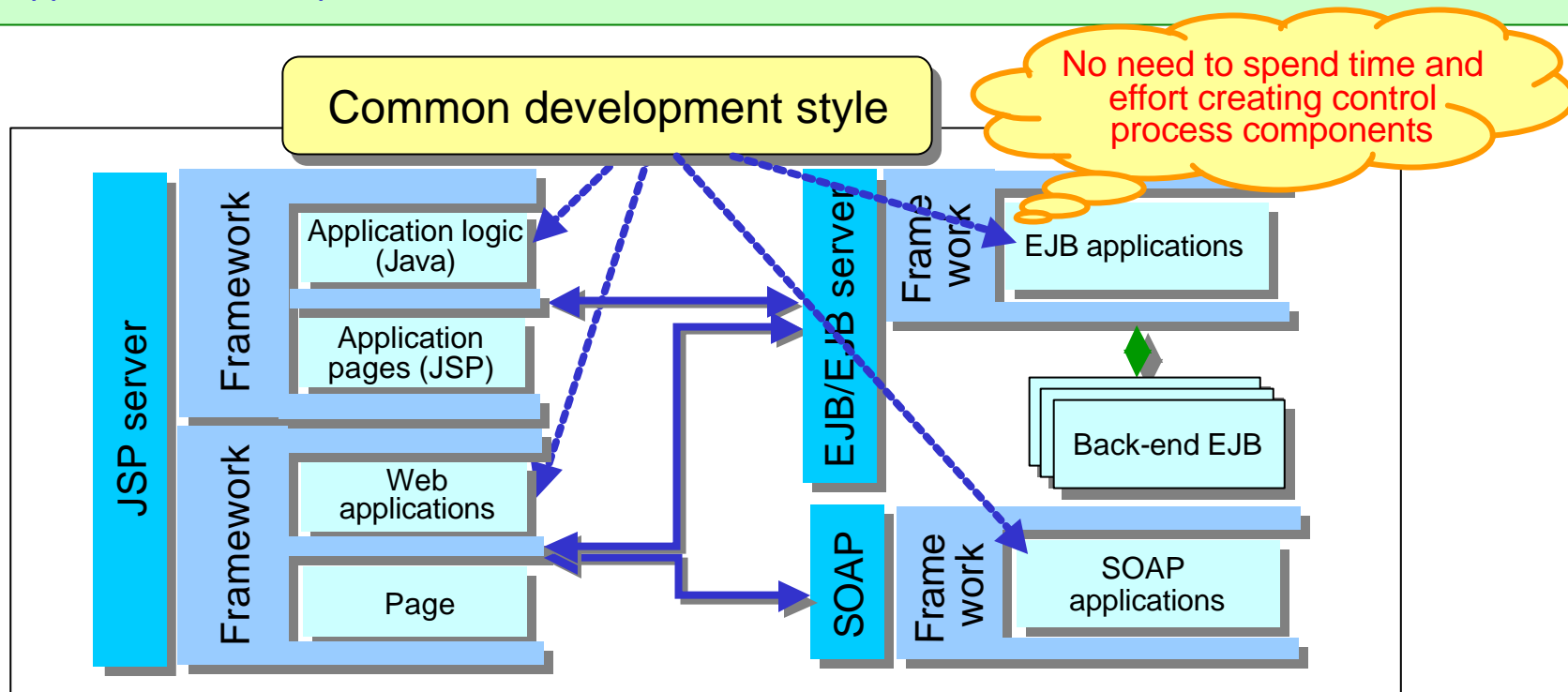


Strengths of Interstage Application Server Plus

- Productivity improvements and stable operation achieved through the use of a framework
- Integration and personalization of existing business Web pages
- Autonomous functions for improved stability
 - ◆ Detection of and automatic recovery from business application errors
 - ◆ Error localization through management of resources for each business application

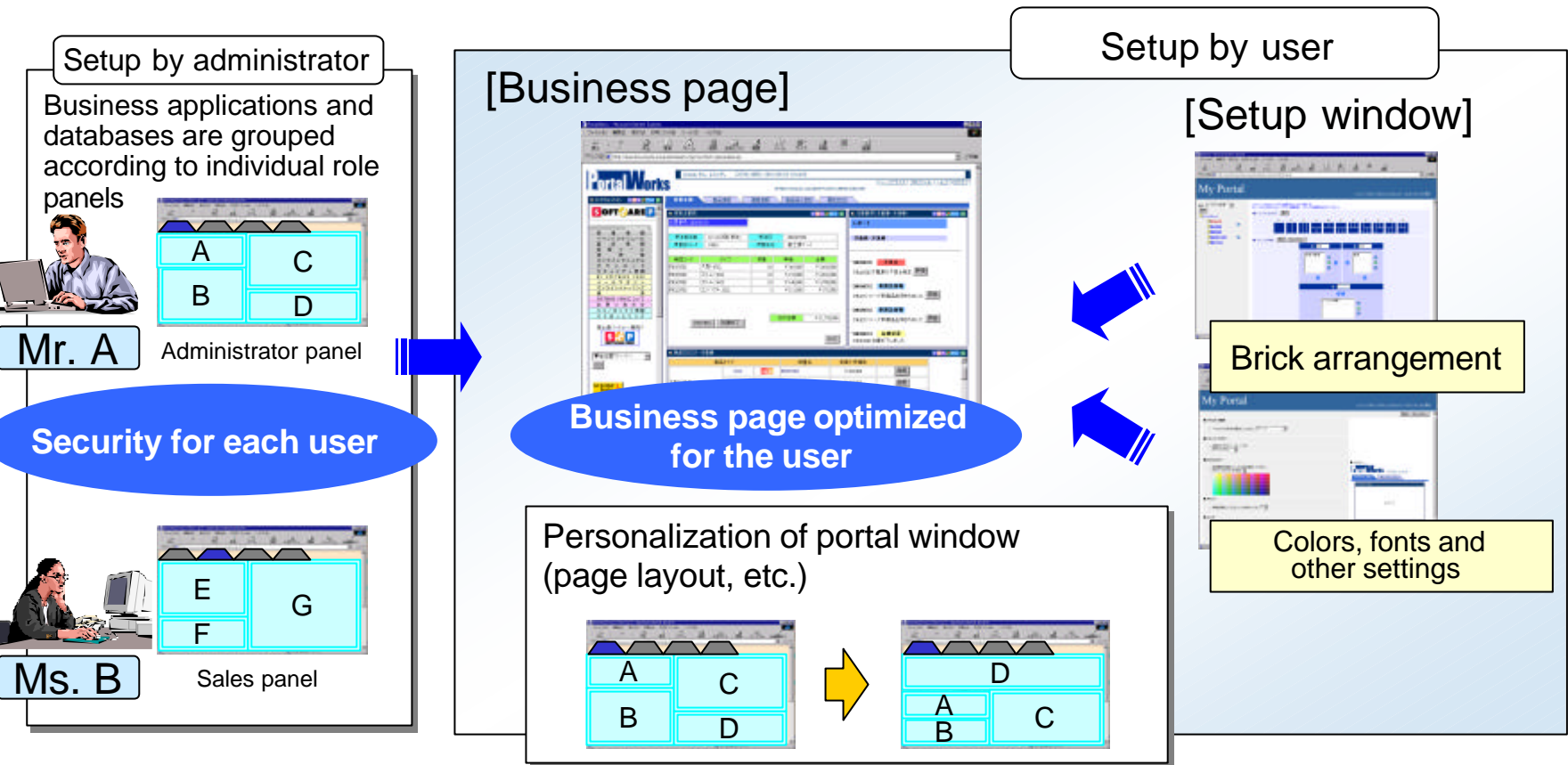
Productivity improvements and stable operation achieved through the use of a framework

- Web applications, EJB applications and Web service applications can be developed using a common style.
 - The use of a common style during development improves productivity.
 - Program structure is standardized, which leads to quality improvements.
- The large number of ready-made control process components removes the need to create new ones.
 - Development workloads are reduced because it is only necessary to develop business processes.
 - The quality of control process components is guaranteed, so the quality of developed applications also improves.



Integration and personalization of existing business Web pages

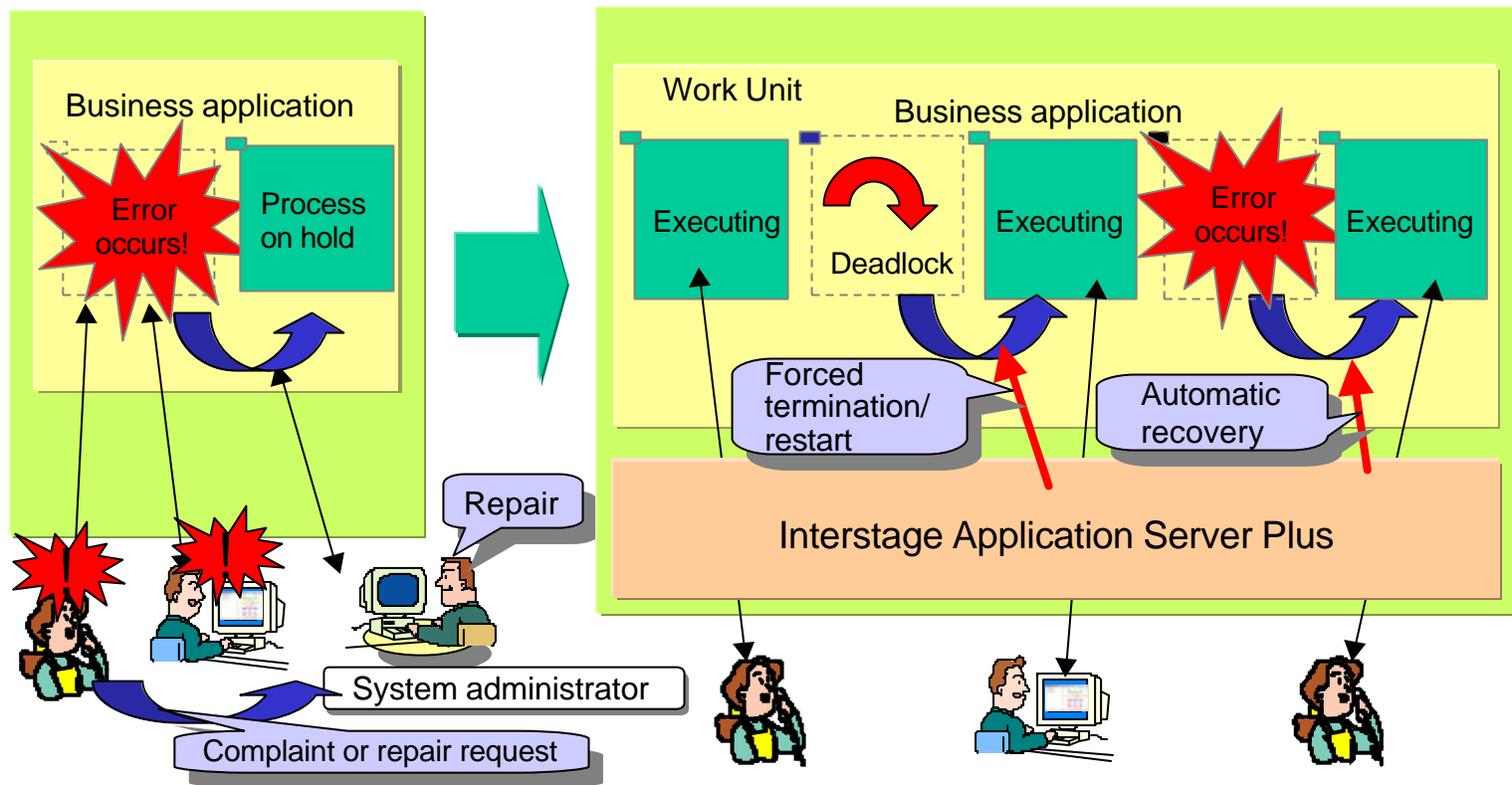
- Integrates the Web pages of a variety of existing enterprise systems.
- Enables pages to be personalized for individual users.



- Information is obtained from multiple enterprise systems with a single click.
- Business pages can be personalized with ease.
- The service can be operational in 3 days, and can be progressively expanded without halting operations.

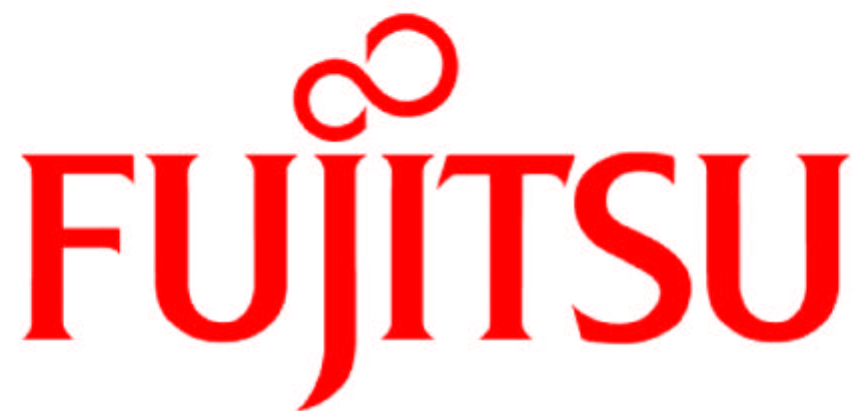
Autonomous functions for improved stability

- **Detection of and automatic recovery from business application errors**
Business application errors (ABENDs, loops, deadlocks, etc.) are detected early and recovery is automatic. Client requests can continue to be received even during the recovery process.
- **Error localization through management of resources for each business application**
Resources can be obtained beforehand for each business application and then reused. By controlling the resources used by each business application, it is possible to prevent other business applications from running short of resources.





interstage.fujitsu.com



FUJITSU

THE POSSIBILITIES ARE INFINITE