



# FUSE™ Integration Designer

## Installing FUSE™ Integration Designer

Version 1.2  
May 2009

# Installing FUSE<sup>™</sup> Integration Designer

Progress Software

Version 1.2

Publication date 23 Jul 2009

Copyright © 2001-2009 Progress Software Corporation and/or its subsidiaries or affiliates.

## ***Legal Notices***

Progress Software Corporation and/or its subsidiaries may have patents, patent applications, trademarks, copyrights, or other intellectual property rights covering subject matter in this publication. Except as expressly provided in any written license agreement from Progress Software Corporation, the furnishing of this publication does not give you any license to these patents, trademarks, copyrights, or other intellectual property. Any rights not expressly granted herein are reserved.

Progress, IONA, IONA Technologies, the IONA logo, Orbix, High Performance Integration, Artix, FUSE, and Making Software Work Together are trademarks or registered trademarks of Progress Software Corporation and/or its subsidiaries in the US and other countries.

Java and J2EE are trademarks or registered trademarks of Sun Microsystems, Inc. in the United States and other countries. CORBA is a trademark or registered trademark of the Object Management Group, Inc. in the US and other countries. All other trademarks that appear herein are the property of their respective owners.

While the information in this publication is believed to be accurate Progress Software Corporation makes no warranty of any kind to this material including, but not limited to, the implied warranties of merchantability and fitness for a particular purpose. Progress Software Corporation shall not be liable for errors contained herein, or for incidental or consequential damages in connection with the furnishing, performance or use of this material.

All products or services mentioned in this manual are covered by the trademarks, service marks, or product names as designated by the companies who market those products.

No part of this publication may be reproduced, stored in a retrieval system or transmitted, in any form or by any means, photocopying, recording or otherwise, without prior written consent of Progress Software Corporation. No third-party intellectual property right liability is assumed with respect to the use of the information contained herein. Progress Software Corporation assumes no responsibility for errors or omissions contained in this publication. This publication and features described herein are subject to change without notice. Portions of this document may include Apache Foundation documentation, all rights reserved.

# Table of Contents

<b>1. FUSE Integration Designer Prerequisites .....</b>	<b>5</b>
Java and Eclipse Prerequisites .....	6
Configuring Java Settings .....	7
<b>2. Installing FUSE Integration Designer .....</b>	<b>9</b>
Installing FUSE Integration Designer using the ZIP Files .....	10
Starting FUSE Integration Designer .....	11
Installing/Updating FUSE Integration Designer 1.2.1 from the Update Site .....	12
Installing FUSE Integration Designer 1.2 from the Update Site .....	15



# Chapter 1. FUSE Integration Designer Prerequisites

*Before you install FUSE Integration Designer, you need to check that you have the required Java Development Kit and Eclipse platform installed.*

Java and Eclipse Prerequisites .....	6
Configuring Java Settings .....	7

## Java and Eclipse Prerequisites

### Required JDK

Java Development Kit 1.5 and 1.6 are recommended for FUSE Integration Designer.

---

### Required Eclipse platform

The recommended Eclipse version is 3.4.1. You can download and install the Eclipse J2EE version package from the following URL:

<http://www.eclipse.org/downloads>

---

### Required Eclipse features

A number of Eclipse features are required for FUSE Integration Designer to run successfully.

We recommend that you install these features from the relevant update site *at the same time* as you install FUSE Integration Designer. This is the easiest way to ensure that the dependencies between features are resolved. See [Installing FUSE Integration Designer using the ZIP Files on page 10](#) for details.

# Configuring Java Settings

## Launching Eclipse in a JDK

The default FUSE Integration Designer installation does not integrate with Maven, and you do not need to ensure that Eclipse launches in a JDK.

If you want to use Apache Maven with FUSE Integration Designer which requires Eclipse to run in a JDK rather than a JRE, you will need to specify a JDK location in the `eclipse.ini` file before launching Eclipse. Follow the steps if you want to ensure that Eclipse launches in a JDK:

1. In the root of your Eclipse installation directory open the `eclipse.ini` file in a text editor.

2. Add the following lines:

- Windows

```
-vm
PathToJdkHome\bin\javaw.exe
```

- UNIX

```
-vm
PathToJdkHome/bin/java
```

3. Keep the `eclipse.ini` file open.

## Allocating additional memory to the VM

If you are installing FUSE Integration Designer from the update site, you may get out of memory errors. To avoid out of memory errors, you need to increase the minimum amount of memory that is allocated to the JVM, by adding the following lines to the `eclipse.ini`:

```
-vmargs
-Xms256M
```

Save and close the `eclipse.ini`.

## Setting Java preferences

You also need to ensure that your Eclipse Java preferences point to a JDK and that your Java compiler compliance level is set to the currently supported Java version.

To set Java preferences in Eclipse:

1. Select **Window** → **Preferences**.
2. In the list of preferences on the left select **Java** and then **Installed JREs**.
3. In the Installed JREs panel, click **Add**.
4. In the Add JRE dialog box, click **Browse** next to the **JRE home directory** field and select the path to a Java (1.5 or 1.6) JDK.
5. Click **OK**.
6. Back in the Installed JREs panel, click the checkbox next to the Java 1.5 JDK or Java 1.6 JDK to ensure that it is used when you create new projects.
7. Now click the **Compiler** preference and in the Compiler panel select either **5.0** or **6.0** from the **Compiler compliance level** drop-down list.
8. Click **OK** to save the updated preferences.



# Chapter 2. Installing FUSE Integration Designer

*You can install FUSE Integration Designer and all its dependencies using the FUSE Integration Designer Zip file or the Eclipse update manager.*

Installing FUSE Integration Designer using the ZIP Files .....	10
Starting FUSE Integration Designer .....	11
Installing/Updating FUSE Integration Designer 1.2.1 from the Update Site .....	12
Installing FUSE Integration Designer 1.2 from the Update Site .....	15

# Installing FUSE Integration Designer using the ZIP Files

To install FUSE Integration Designer using the zip files:

1. Download the FUSE Integration Designer 1.2.1 version from <http://fusesource.com/products/fuse-integration-designer/>
2. Open the zip file and extract all its contents on your local machine.
3. Once all your files are extracted, your FUSE Integration Designer installation is complete.
4. To verify the installation, go to the installation directory, **<installation\_dir>** and check the directory structure. The directories listed here should have been created under your installation directory:
  - **fuse-integration-designer-1.2.1\bin**: contains all configuration files used by FUSE Integration Designer at start-up
  - **fuse-integration-designer-1.2.1\packages**
  - **fuse-integration-designer-1.2.1\platform**

# Starting FUSE Integration Designer

Once the installation is complete, start FUSE Integration Designer in the following way:

On Windows:

1. Go to `<installation_dir>/fuse-integration-designer-1.2.1/bin`.
2. Double click on `fuse.exe`. FUSE Integration Designer starts.

On Linux:

1. Launch the terminal window.
2. Set your PATH variables using the following syntax: **export PATH= <Java PATH till bin>:\$PATH**
3. Start the FUSE Integration Designer from within the terminal using the following commands: **cd**  
**<installation\_dir>/fuse-integration-designer-1.2.1/bin** and **./fuse** .



## Note

To avoid setting the PATH variable each time, you can also save the PATH variable in a batch file.

When you start FUSE Integration Designer the first time, you are greeted by a Welcome Screen. Use the Show Editor icon to go to the FUSE Integration Designer editor.

# Installing/Updating FUSE Integration Designer 1.2.1 from the Update Site

## Installing FUSE Integration Designer 1.2.1 for the First Time

If you are installing FUSE Integration Designer from the Update Site for the first time, simply follow the steps given in [Installing FUSE Integration Designer Version 1.2 from the Update Site on page 15](#).

---

## Installing FUSE Integration Designer 1.2.1 on Top of Version 1.2 (Installed Using the ZIP File)

If you are installing FUSE Integration Designer from the Update Site on top of the version 1.2 (installed using the Zip file), follow the steps given below:

1. You should have installed FUSE Integration Designer version 1.2 using the ZIP File.
2. Launch FUSE Integration Designer if not open.
3. Once you have launched FUSE Integration Designer, select **Help** → **Software Updates**.
4. In the Software Updates and Add-ons panel, select the tab **Available Software**.
5. Click **Add Site...**
6. In the Add Site dialog, enter the FUSE Integration Designer 1.2.1 build update site detail and then click **OK**:

URL:

<http://repo.fusesource.com/eclipse/updates>

7. In the Search Results panel, expand the FUSE Integration Designer node (FUSE Integration Designer appears as a sub-item under <http://repo.fusesource.com/eclipse/updates> > > FUSE) and select the checkbox against the features listed in the Available Software tab and click Install.
8. The update manager automatically selects the dependent features in the added sites and brings up the Install dialog. Review and confirm the software items to install. Click **Next**.
9. Accept the terms of the license agreement. The Installation panel displays a list of all the features that are about to be installed. Click **Finish**.

### Installing FUSE Integration Designer 1.2.1 on Top of Version 1.2 (Also Installed from the Update Site)

10. Once the download completes, restart FUSE Integration Designer and ensure that all plugins are properly loaded.

---

If you are installing FUSE Integration Designer from the Update Site on top of the version 1.2 (also installed using the Update Site), follow the steps given below:

1. You should have installed FUSE Integration Designer version 1.2 using the steps given in [Installing FUSE Integration Designer Version 1.2 on page 15](#).
2. Exit from Eclipse if open.
3. Go to the directory where you have installed Eclipse.
4. In the <eclipse\_home\_dir>/configuration/.settings directory, delete the files: **org.eclipse.equinox.p2.artifact.repository.prefs** and **org.eclipse.equinox.p2.metadata.repository.prefs**.
5. Restart Eclipse.
6. Once you have launched Eclipse, select **Help → Software Updates**.
7. In the Software Updates and Add-ons panel, select the tab **Available Software**.
8. Click **Add Site...**
9. In the Add Site dialog, enter the FUSE Integration Designer 1.2.1 build update site detail and then click **OK**:  
  
URL:  
`http://repo.fusesource.com/eclipse/updates`
10. In the Search Results panel, expand the FUSE Integration Designer node (FUSE Integration Designer appears as a sub-item under `http://repo.fusesource.com/eclipse/updates >> FUSE`) and select the checkbox against the features listed in the Available Software tab and click Install.
11. The update manager automatically selects the dependent features in the added sites and brings up the Install dialog. Review and confirm the software items to install. Click **Next**.

12. Accept the terms of the license agreement. The Installation panel displays a list of all the features that are about to be installed. Click **Finish**.
13. Once the download completes, restart Eclipse and ensure that all plugins are properly loaded.

# Installing FUSE Integration Designer 1.2 from the Update Site

To install FUSE Integration Designer:

1. Download the Eclipse IDE for Java EE Developers (3.4.1) from <http://www.eclipse.org/downloads/packages/release/ganymede/sr1>
2. In Eclipse, select **Help** → **Software Updates**.
3. In the Software Updates and Add-ons panel, select the tab **Available Software**.
4. You should be able to see two of these softwares in the panel, **Ganymede Update Site** and **The Eclipse Project Updates**.
5. Click **Add Site....**
6. In the Add Site dialog, enter the build update site detail and then click **OK**:

URLs:

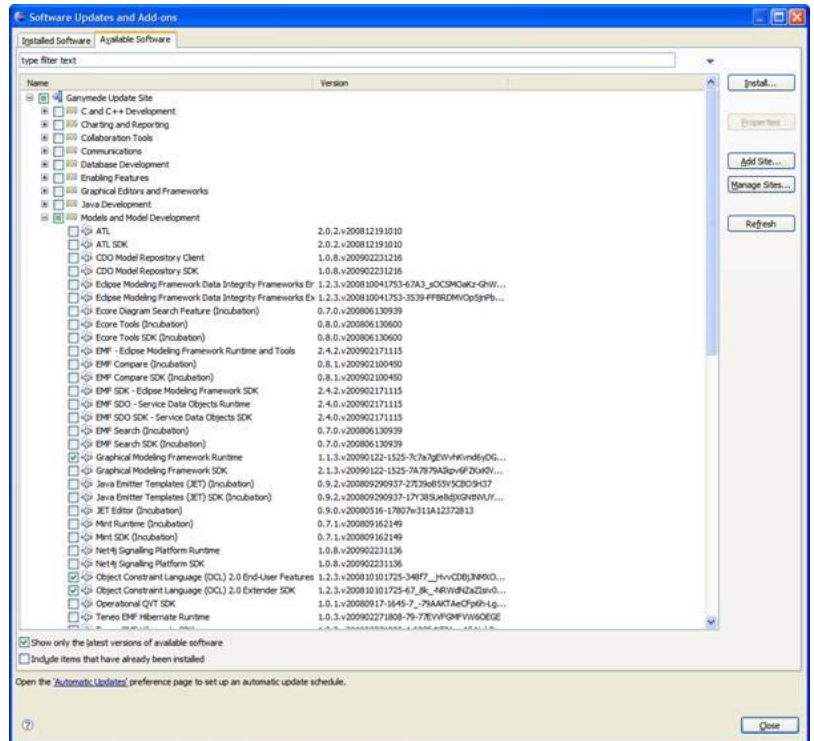
<http://repo.fusesource.com/eclipse/updates>

7. Click on the **Add Site...** button once more. In the Add Site dialog, enter the Spring IDE site detail and then click **OK**:

URLs:

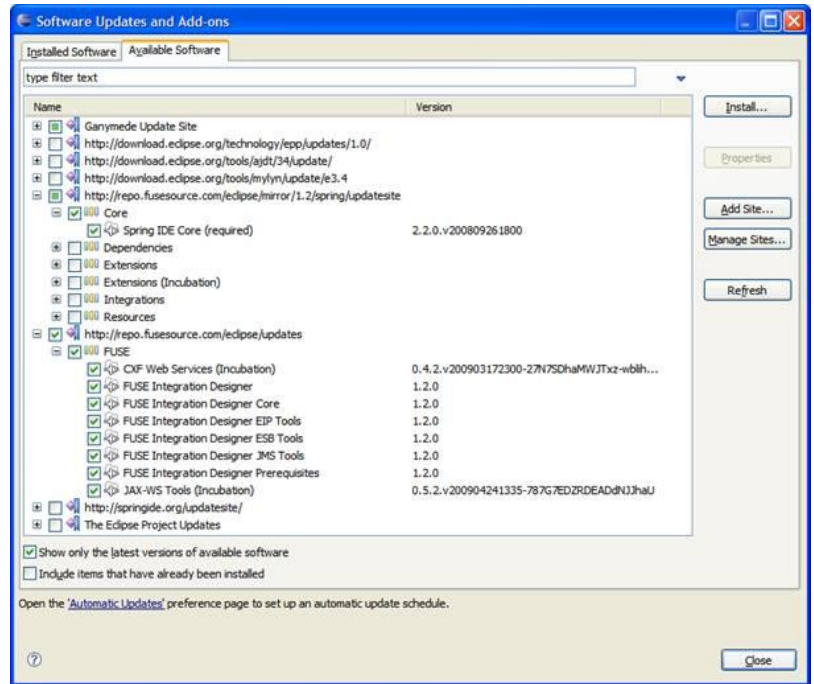
<http://repo.fusesource.com/eclipse/mirror/1.2/spring/updatesite>

8. In the Software Updates and Add-ons panel, go to **Ganymede Update Site** → **Models and Model Development**, and select the options, “Graphical Modeling Framework Runtime” and two packages from OCL (shown in figure).

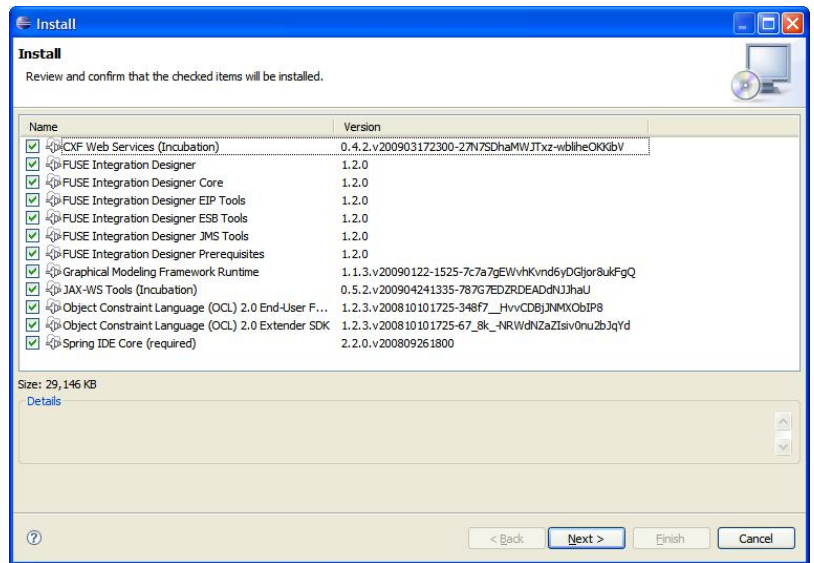


9. In the Search Results panel, expand the following nodes and select the checkbox against the respective names to install the software items.
  - FUSE Integration Designer (FUSE Integration Designer appears as a sub-item under <http://repo.fusesource.com/eclipse/updates> > > FUSE)
  - Spring IDE Update Site



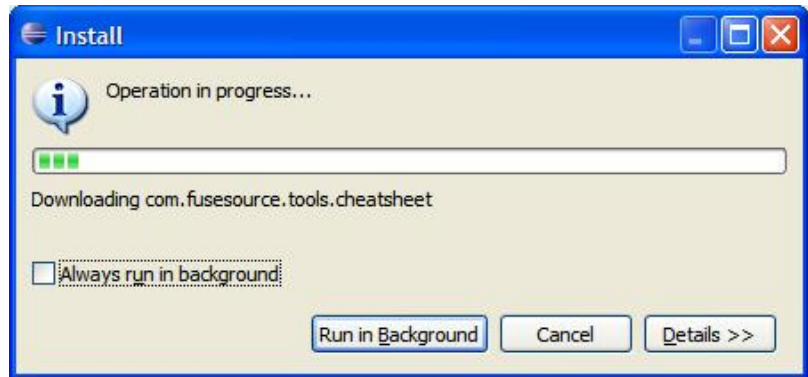
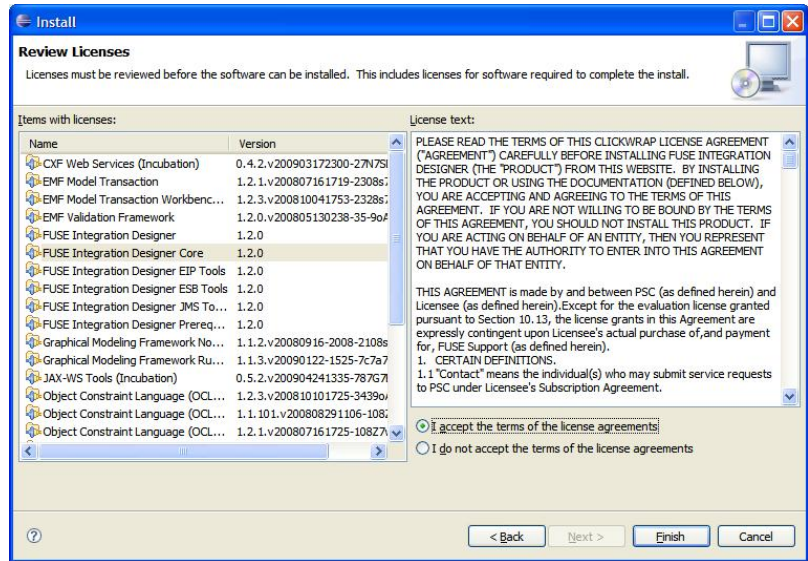


10. Click **Install....** The update manager automatically selects the dependent features in the added sites and brings up the Install dialog.



11. Review and confirm the software items to install. Click **Next**.
12. Accept the terms of the license agreement. The Installation panel displays a list of all the features that are about to be installed. Click **Finish**.

## Installing FUSE Integration Designer 1.2 from the Update Site



- Once the download completes, restart Eclipse and ensure that all plugins are properly loaded.

