

# Creating a Strong Security Infrastructure for Exposing JBoss Services



Blake Dournaee, Product Management, Intel SOA Products Group

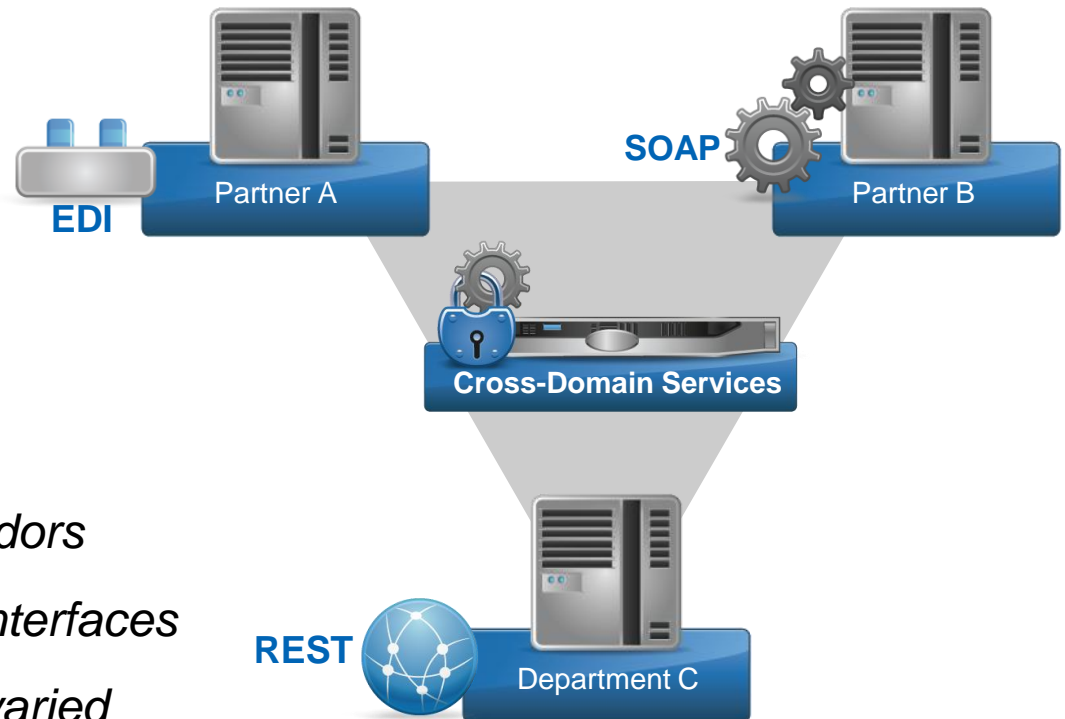
# Enterprise Services Today

## Real World IT Assets are Mixed-environment

- Acquisitions
- New business initiatives
- Cloud initiatives

## Enterprise Service Requirements

- Platform agnostic - *multiple vendors*
- Interaction agnostic – *multiple interfaces*
- Ecosystem breadth– *wide and varied*
- Elastic –*shrink and grow due to business needs*



A platform, interface and ecosystem agnostic **service gateway** is used to create scalable business services that cross domains

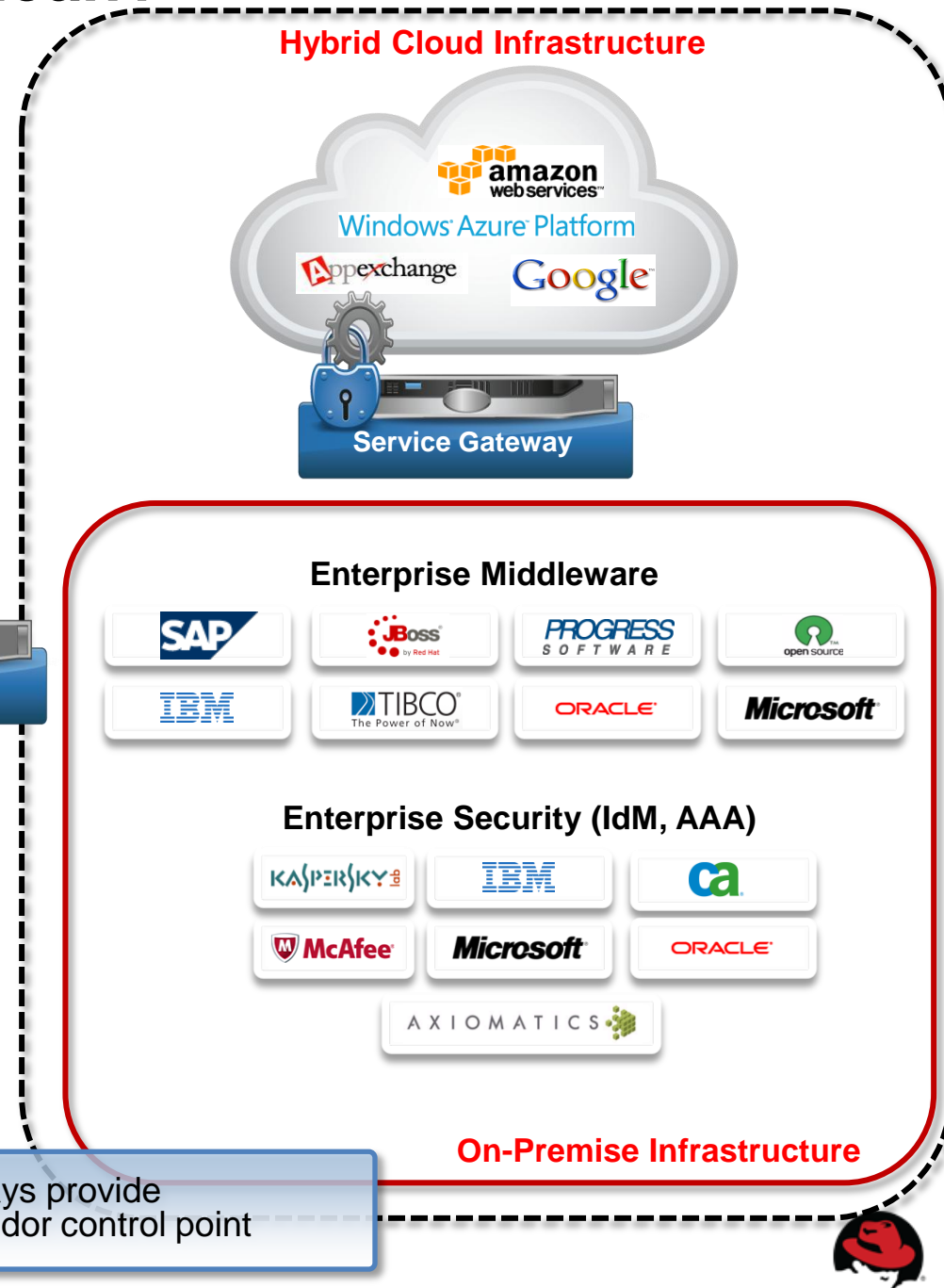


# What does Platform Choice Mean?

How do I deploy consistent, secure, reliable services to my customers and partners...



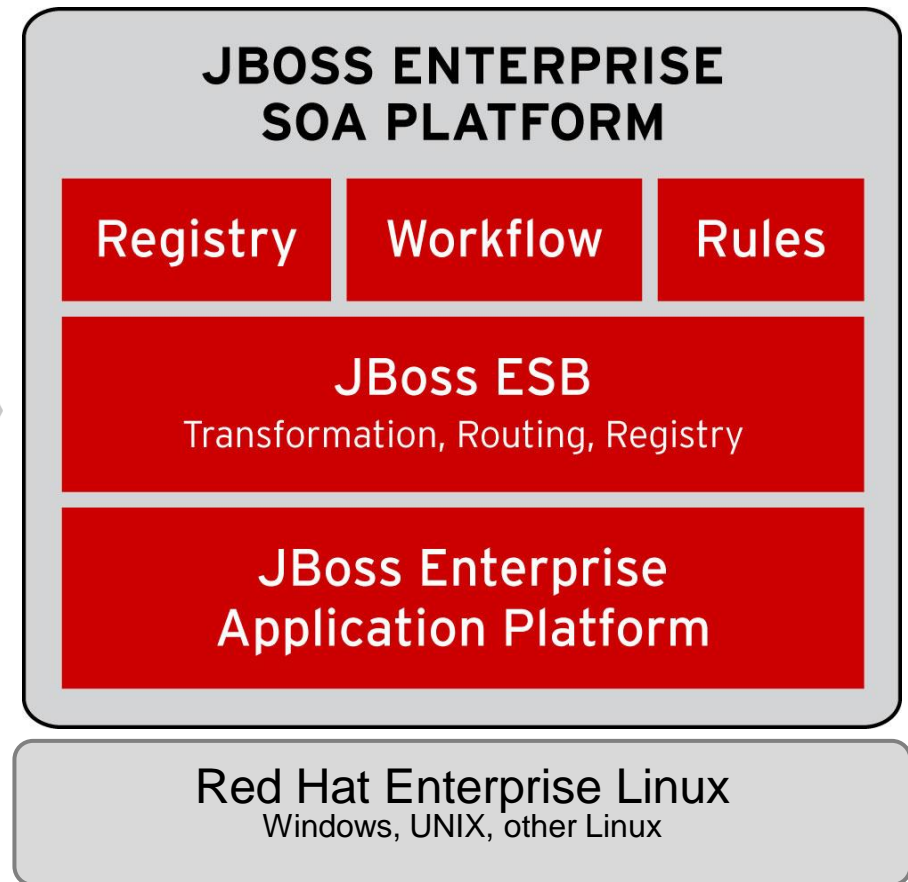
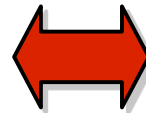
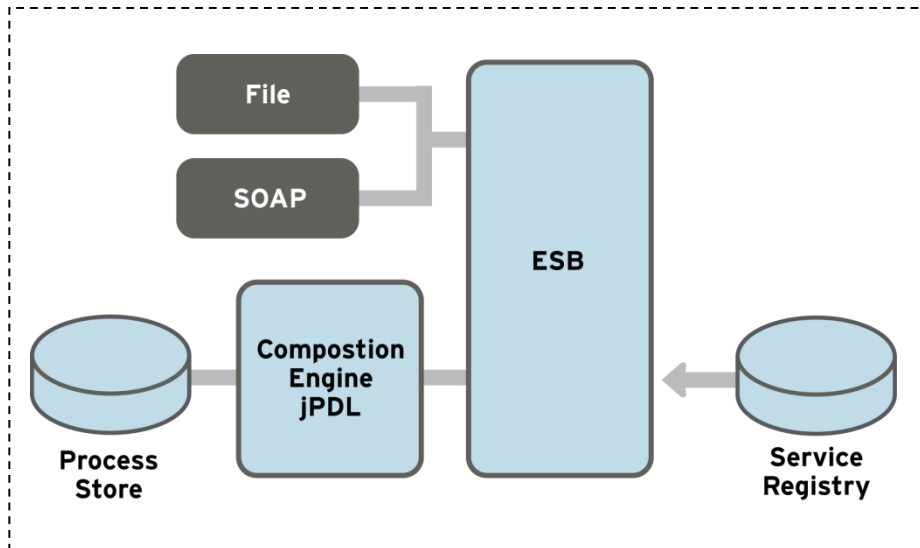
..and do it across different vendor products *and* different datacenter models?



# Example: JBoss Enterprise SOA Platform

Light weight, next generation ESB to  
enterprise integration and process automation

## JBoss Enterprise SOA Platform



- Light weight footprint
- EAI, SOA, EDA, workflow, CEP (future)
- Wide range of deployment scenarios – up to large scale integration platform



# Extending SOA for Business Growth

## App Types



eGov



Supply Chain



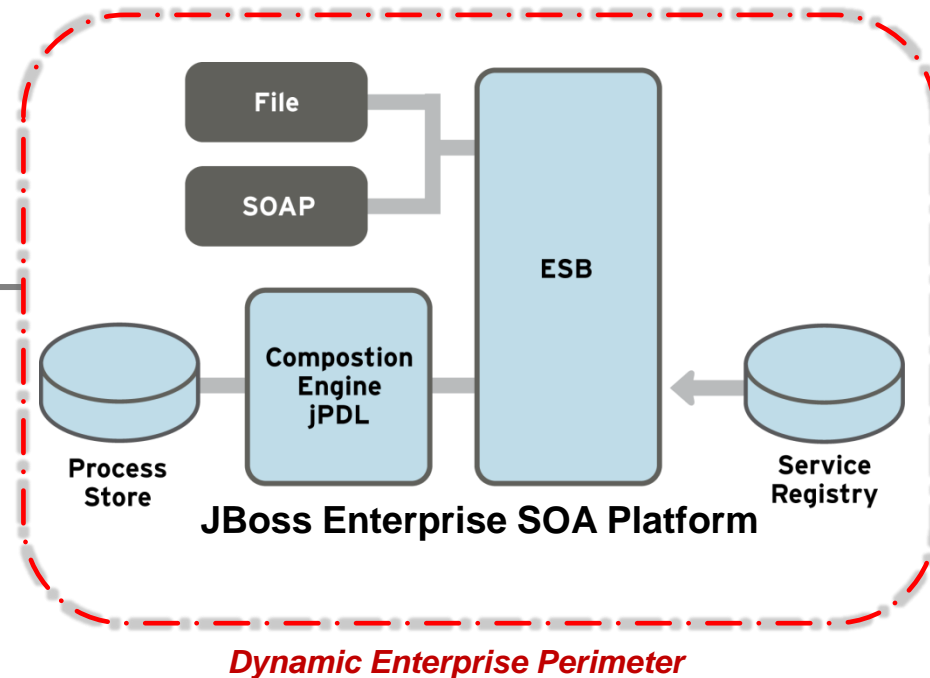
Web 2.0



Cloud

- Customers, Partners, Agencies, Employees
- Authentication and Perimeter Security Concerns
- Scalability and Performance Concerns
- Audit, Privacy and Data Protection Concerns
- Mediation of technology across Enterprise silos

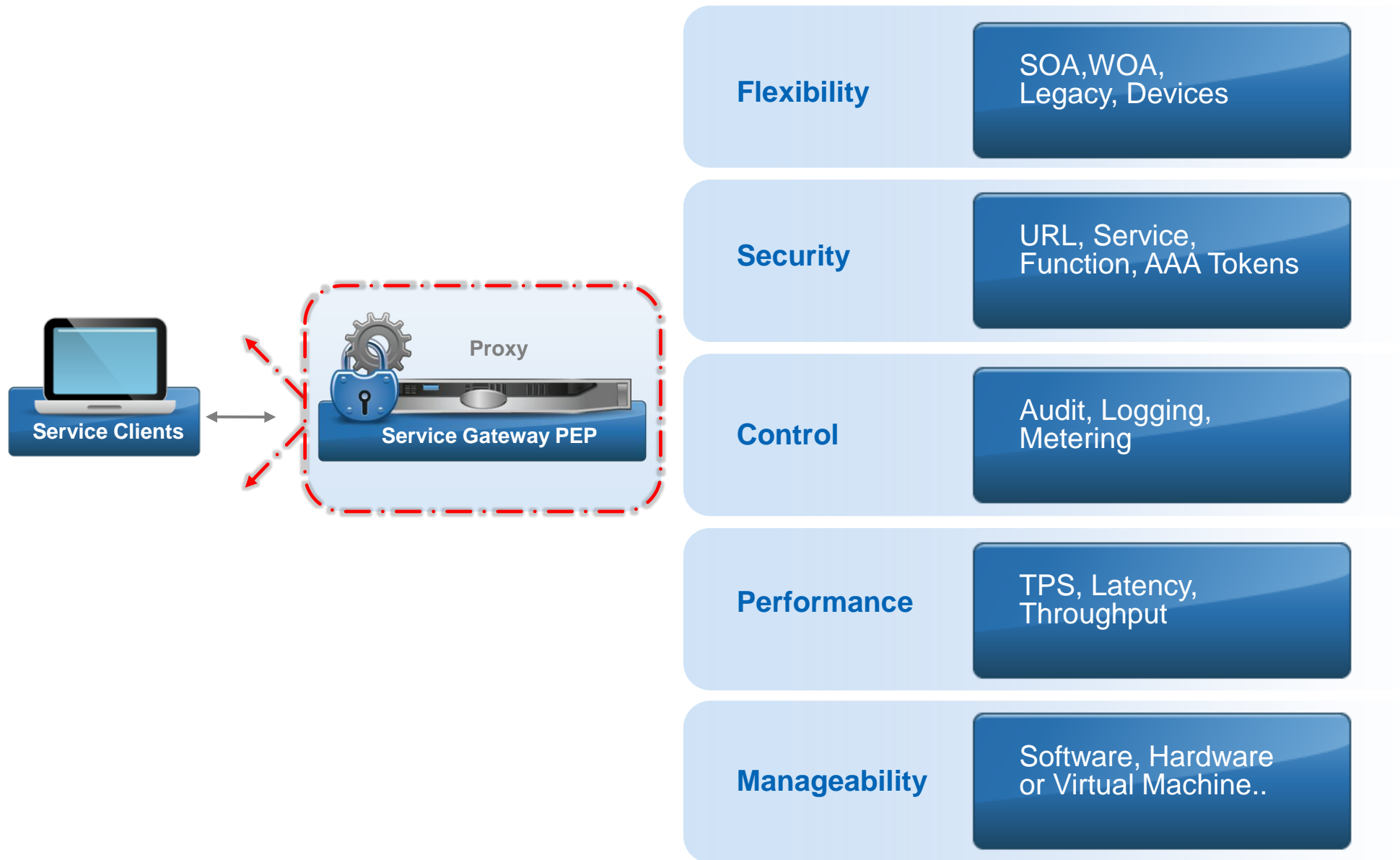
?



Enterprise SOA Must Be Securely  
Extended Outside the Enterprise



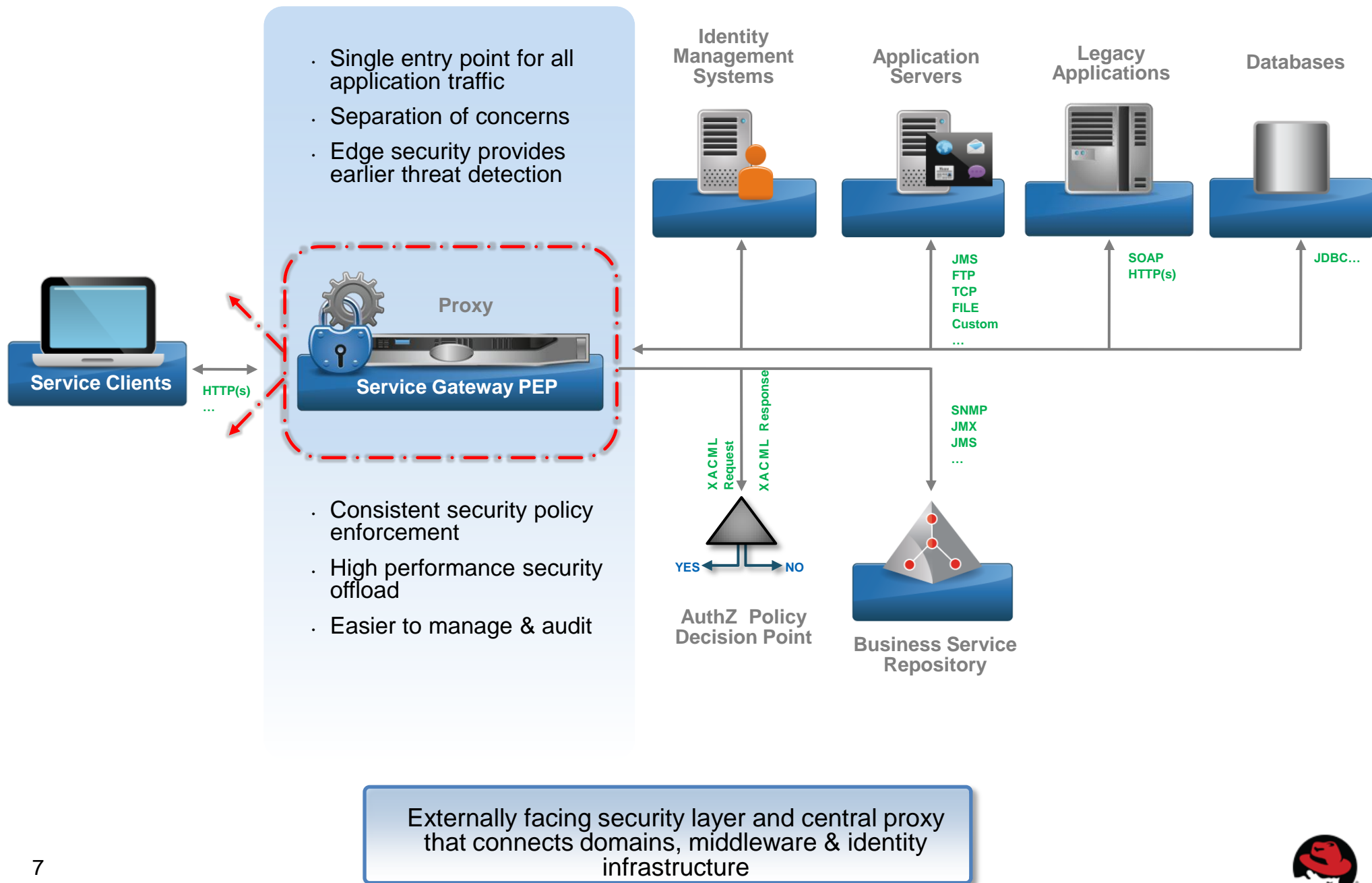
# Why a Service Gateway?



Low overhead. Simplified SOA Infrastructure to deploy & secure purpose built services

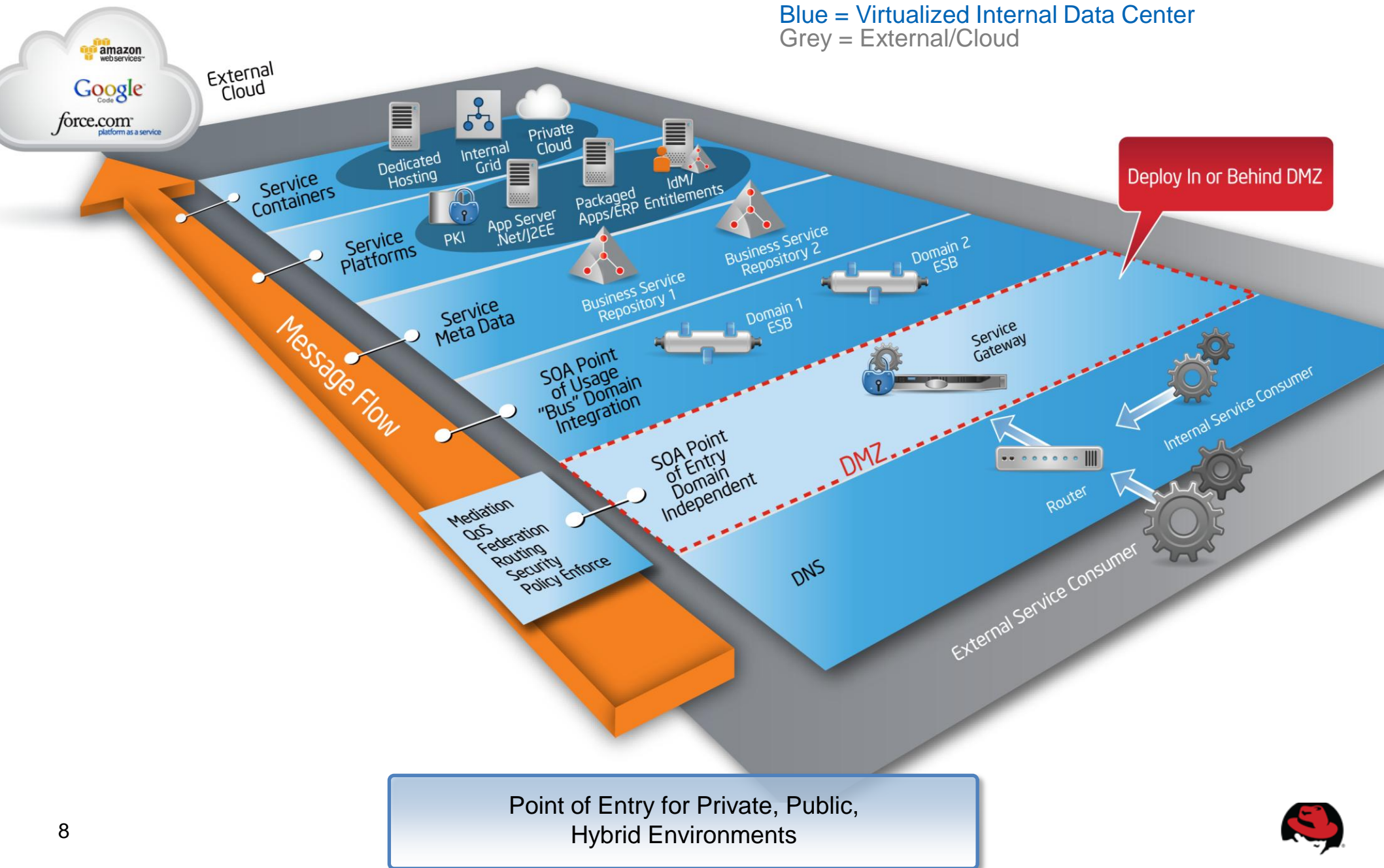


# What is a Service Gateway?



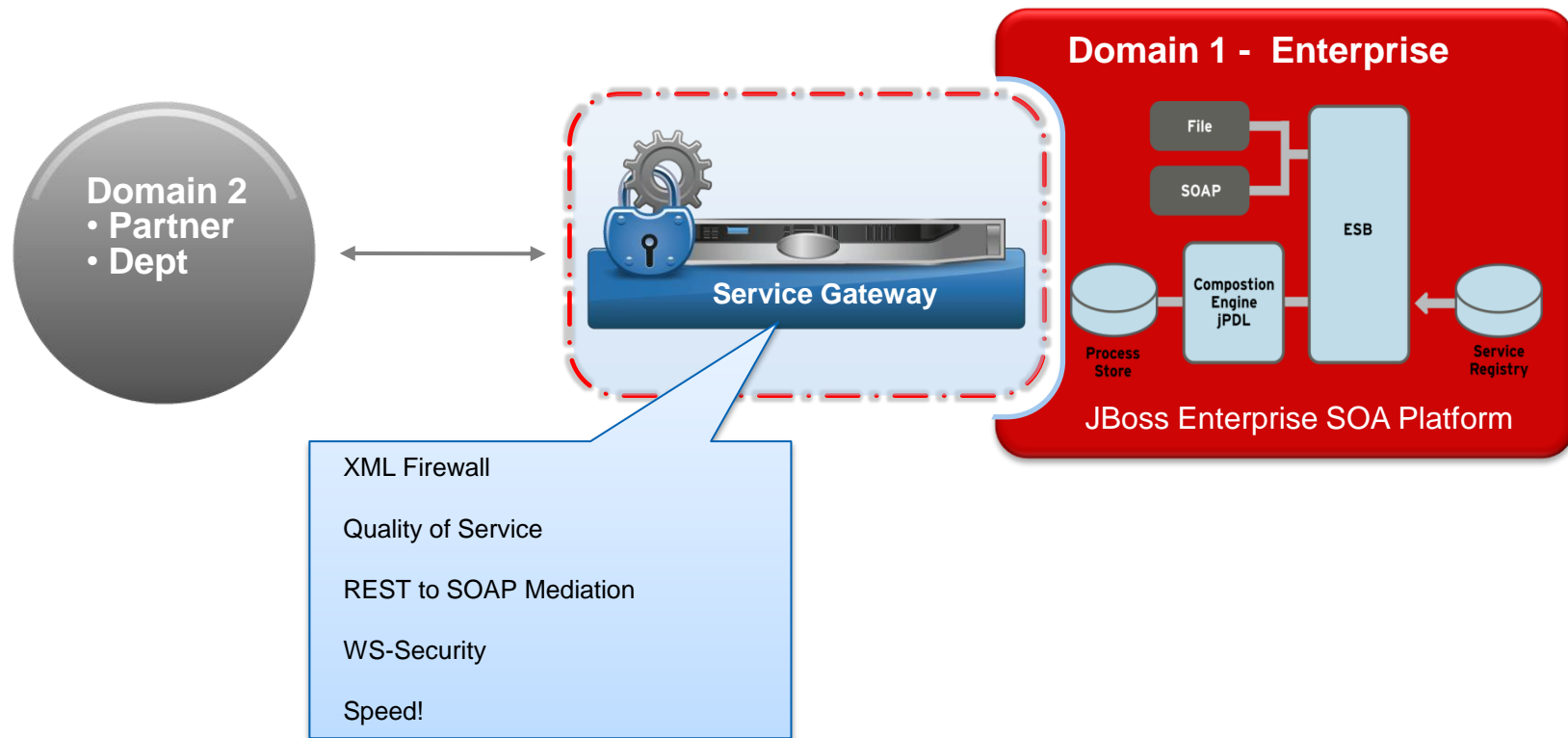


# Service Gateway...From the Data Center to the Cloud





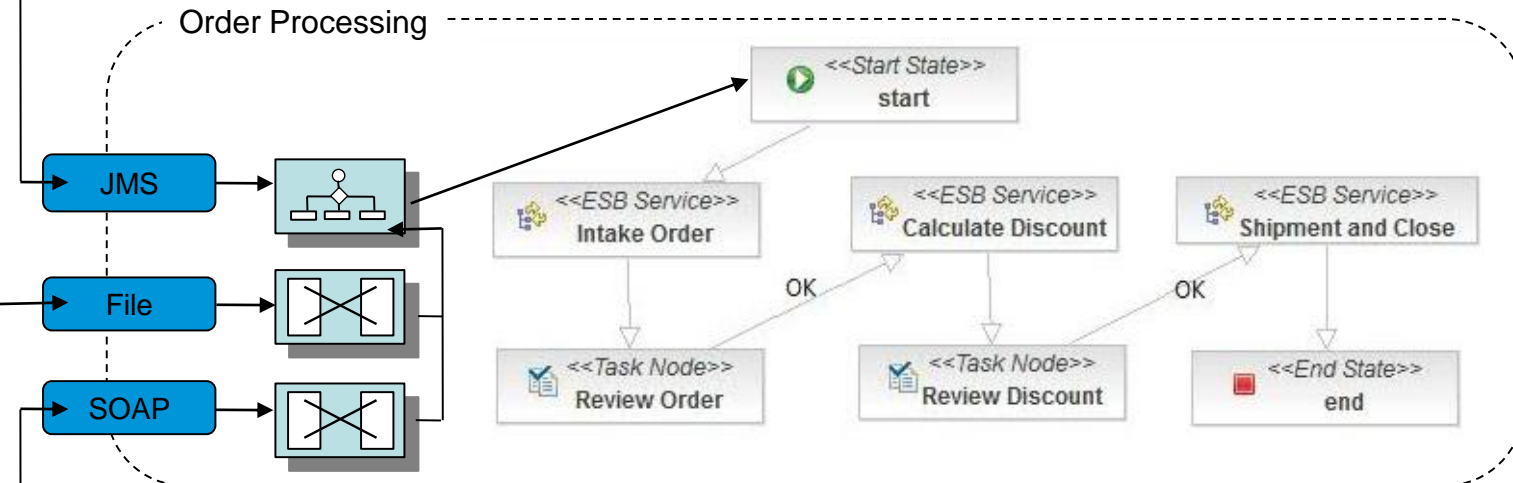
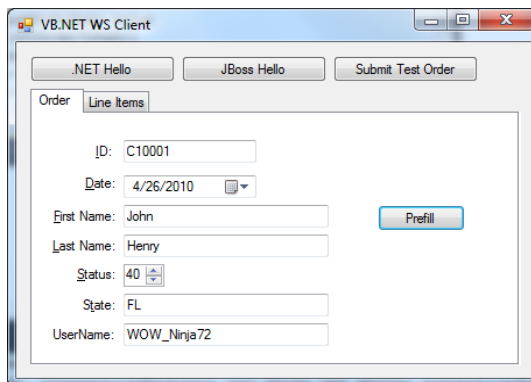
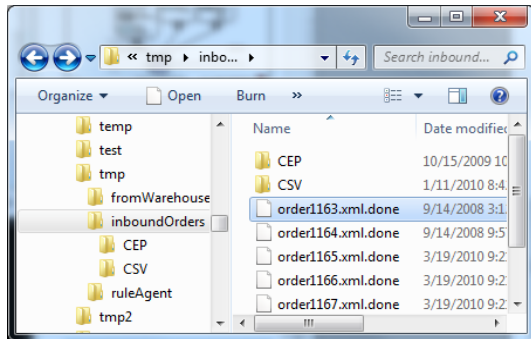
# Usage Model #1: Inter-domain or Edge Gateway



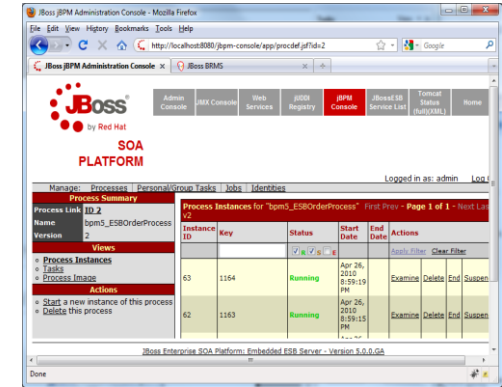
Enables build out of dynamic apps with abstracted delivery to consumers, partners, employees



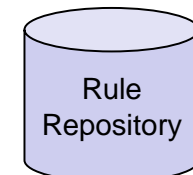
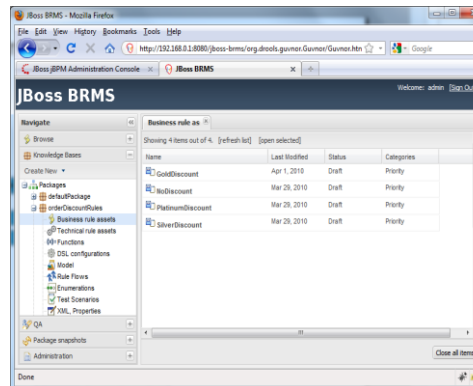
# SOA Platform Demonstration Overview



jBPM Admin  
Console  
Approve  
Reject



BRMS

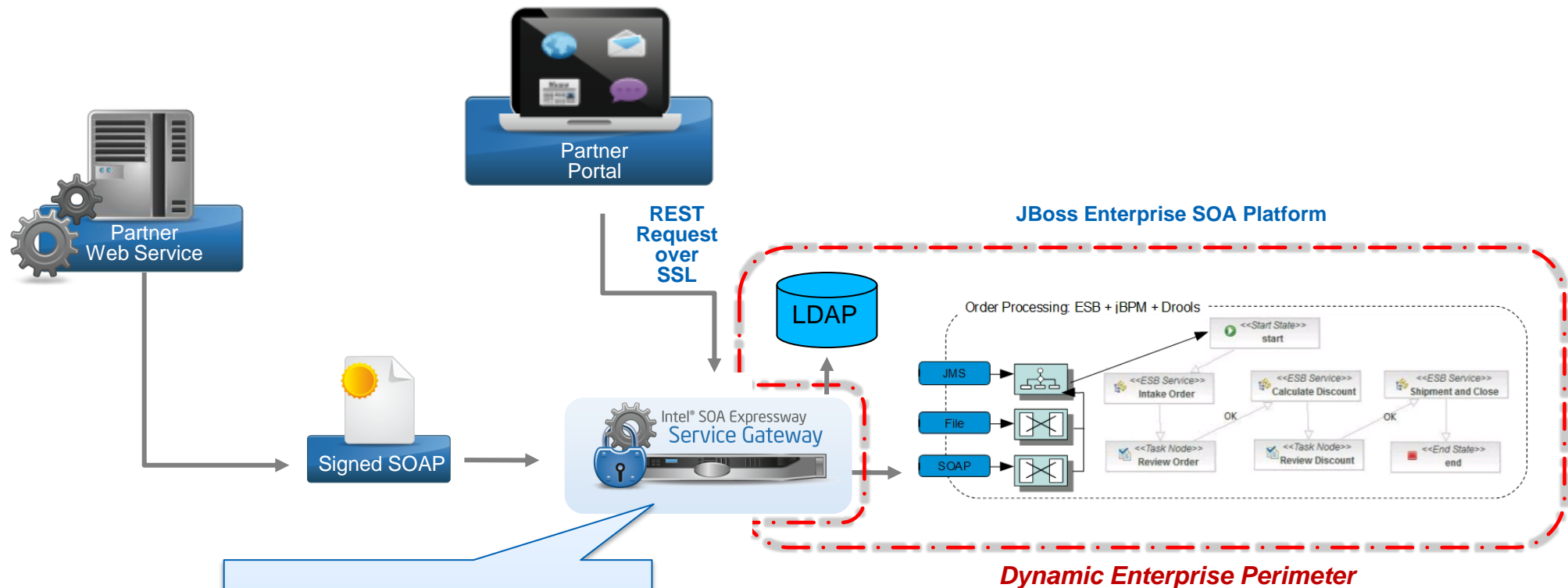


Priority  
Discount  
Rules

AtomPub Feed  
for  
New Orders



# SOA Expressway and JBoss Enterprise SOA Platform

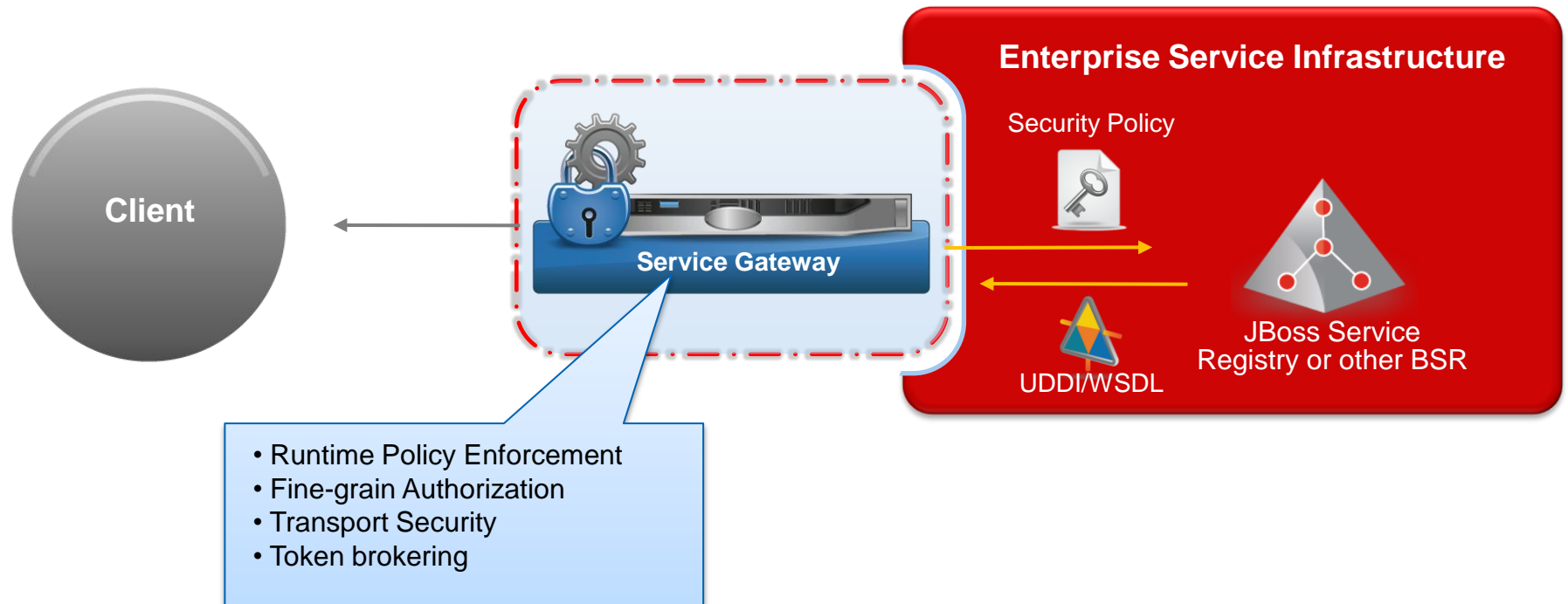


- SOAP Firewalling
- DoS Protection
- Runtime Policy Enforcement
- REST to SOAP Mediation
- Authentication
- Throttling, Auditing and Logging
- Separation of Concerns
- Massive Scalability

SOA Expressway securely exposes JBoss SOA 5 to business partners of all types



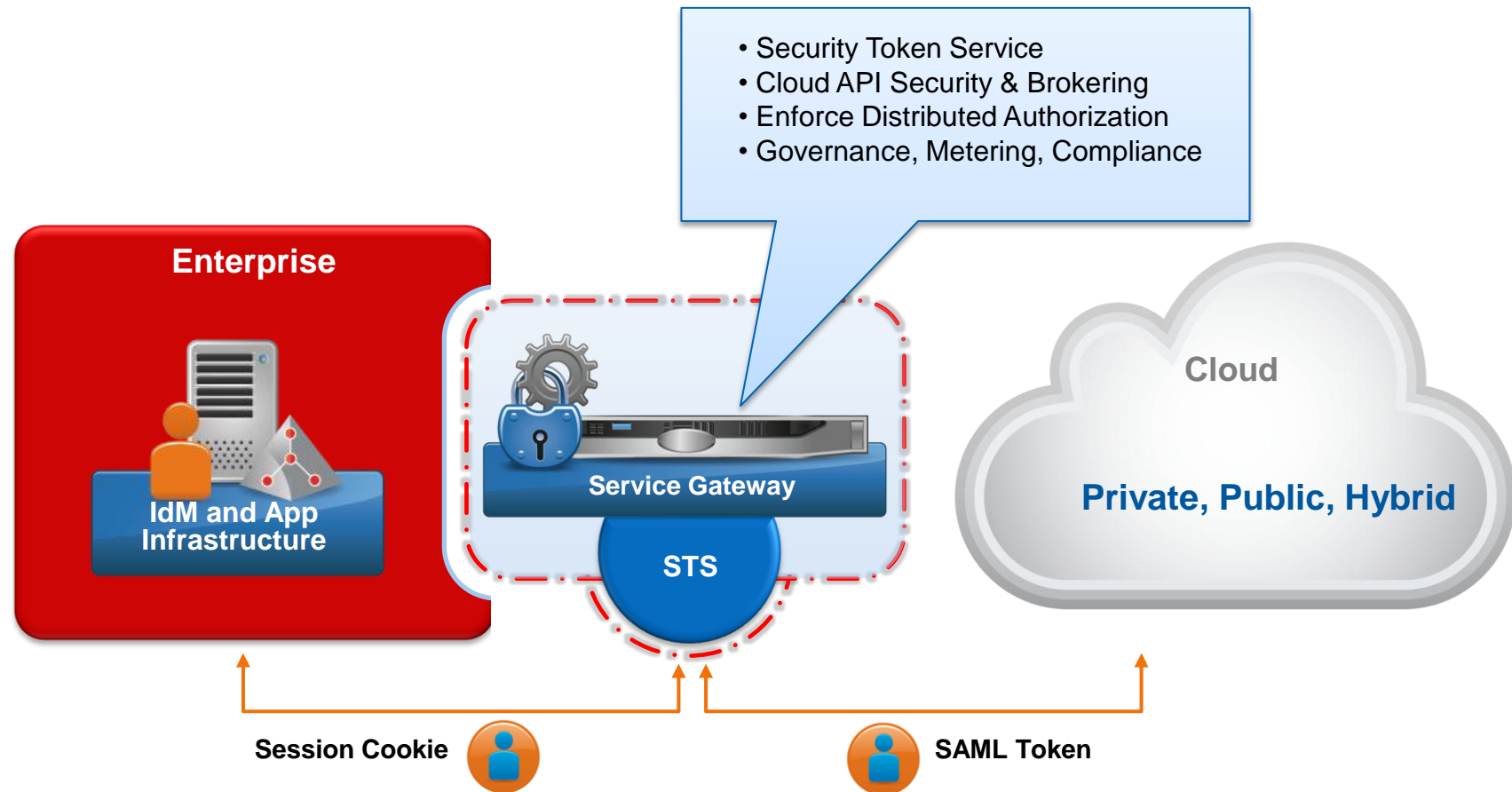
# Usage Model #2: Runtime Governance



Simplified service lifecycle management  
and complex policy enforcement



# Usage Model #3: Cloud Gateway



Identity based cloud security for externalization of ids and a controlled dynamic perimeter

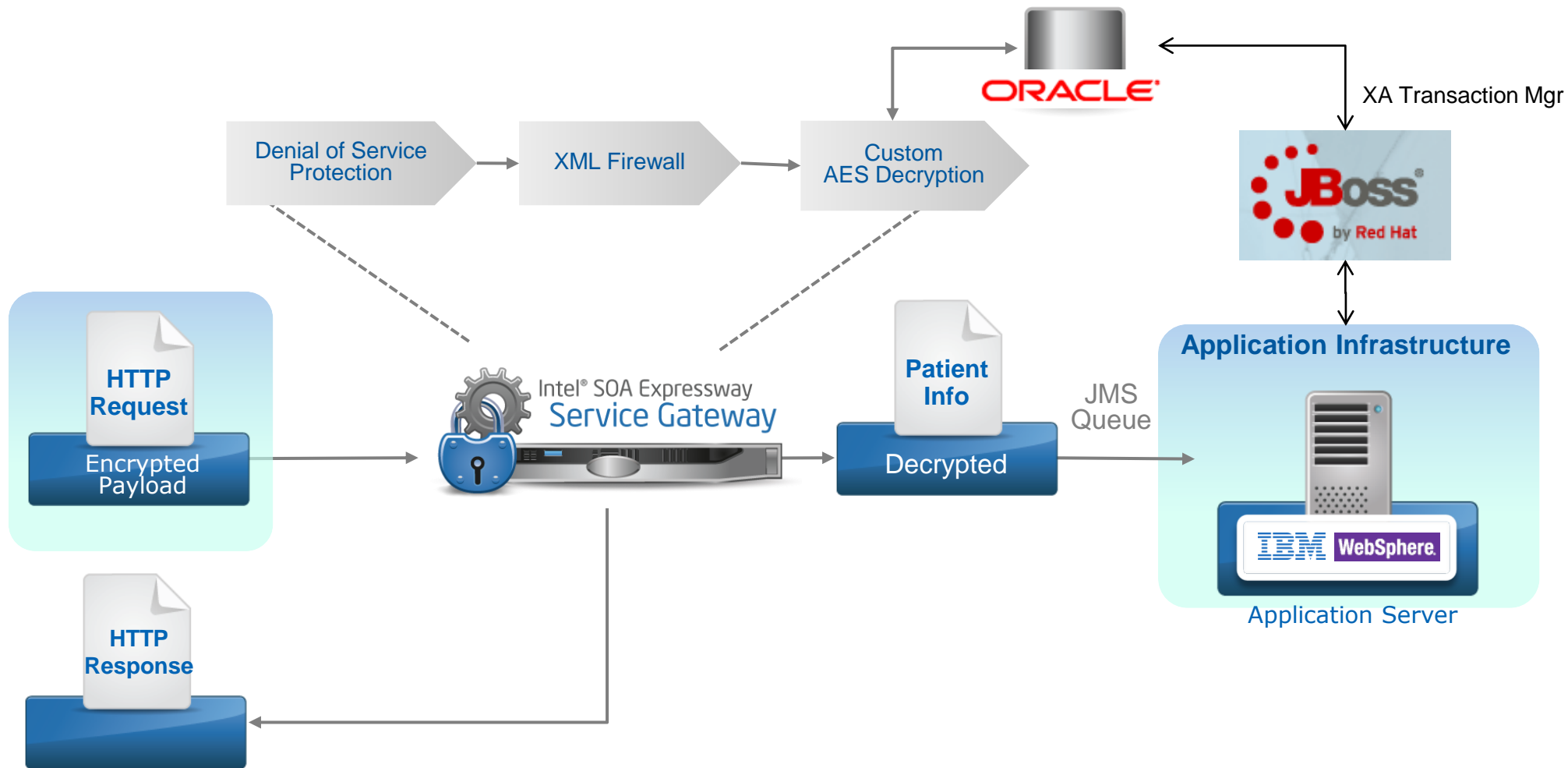


# Security and Mediation

**Goal:** Public network integration using web services

**Problem:** Rising costs and inefficient secure updates of patient data

**Solution:** High performance, low cost, extensible security gateway



Intel was chosen over the homegrown solution which required 32 servers to scale to the required 160,000 messages per day





# Intel® SOA Expressway



**SOA Soft-Appliance**

or



**Virtualized Appliance**

or



**Tamper Resistant Hardware Appliance**

Available on all major operating systems



# Regain Control...Go Stack Neutral

## Intel® SOA Expressway



SOA Soft-Appliance

or



Virtualized Appliance

or



Tamper Resistant Hardware Appliance



### Protocol Agnostic

- REST, SOAP
- XML, Non-XML
- HTTP, FTP, TCP



### Performance

- 2x hard appliances
- Tie-in to chip roadmap
- Efficient XML parsing at machine level



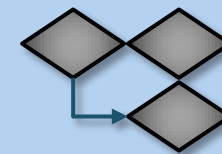
### Secure

- Tamper proof appliance
- Common Criteria
- XML Firewall
- AAA integration



### No Programming

- Simple visual environment



### Flexible

- Routing
- Transform
- Validation
- Service Call-outs
- Firewall Rules

Available on Red Hat Linux & other OSs



# Hardware Appliance Form-Factor



## ⑩ Tamper resistant appliance form factor features:

- Physical Tripwire
- Secure Boot and BIOS
- Snooping protection
- Data Confidentiality
- Tamper Resistant

## ⑩ Federal Market Certifications

- FIPS 140-2 Level 3 Cryptographic Hardware
- Common Criteria EAL4+
- DoD STIG Ready

## ⑩ Network shareable HSM

## ⑩ Intel manufactures & supports

Ready for secure **High-Assurance** verticals



# JBoss Enterprise SOA Platform

[www.jboss.com/resources/soa/](http://www.jboss.com/resources/soa/)

Enterprise SOA  
Platform  
Data Sheet

Enterprise SOA  
Platform  
White Paper

“JBoss Community”  
Pierre’s Blog

<http://community.jboss.org/people/pfrique/blog/>



[www.dynamicperimeter.com](http://www.dynamicperimeter.com)

Joint JBoss/Intel  
White Paper

New Cloud Security  
White Paper

“Truth in SOA”  
Blake’s Blog

<http://soatruth.blogspot.com/>