

SUMMIT

**JBoss
WORLD**

PRESENTED BY RED HAT

**LEARN. NETWORK.
EXPERIENCE OPEN SOURCE.**

www.theredhatsummit.com

jBPM5: Bringing more Power to your Business Processes

Kris Verlaenen – jBPM Lead
May 5th, 2011

SUMMIT

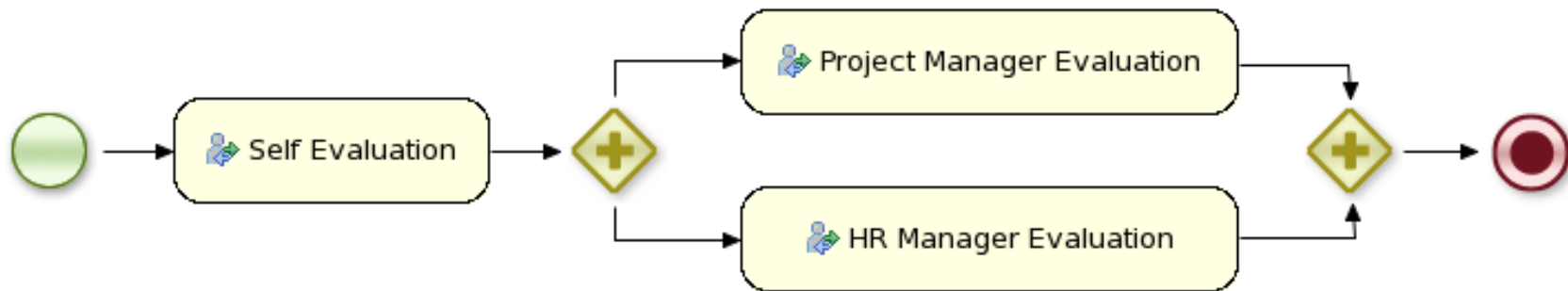
**JBoss
WORLD**

PRESENTED BY RED HAT



What is BPM?

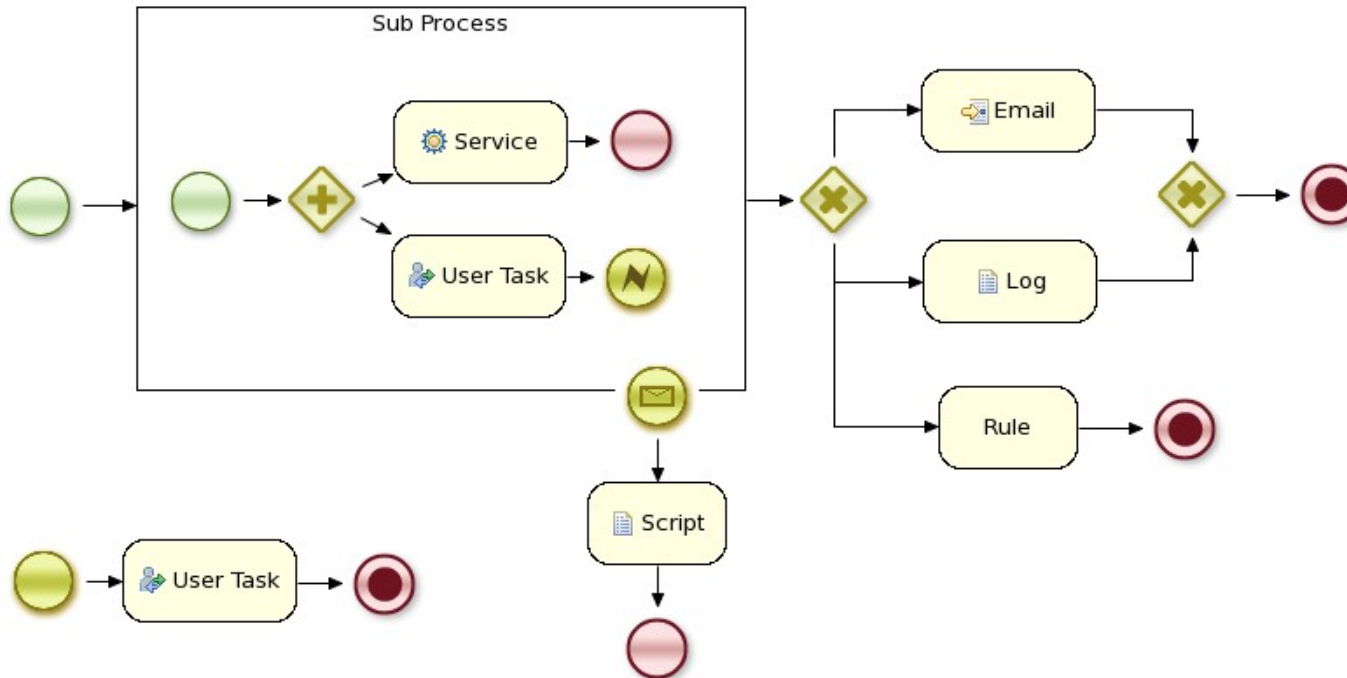
Business Process Management



A **business process** is a process that describes the order in which a series of steps need to be executed, using a flow chart.



Why BPM?



- Visibility
- Monitoring
- Higher-level
- Continuous improvement
- Speed of development
- Increased agility

SUMMIT

**JBoss
WORLD**

PRESENTED BY RED HAT



Key Characteristics of jBPM5

- Open-source business process management project offering:
 - generic process engine supporting native BPMN 2.0 execution
 - targeting developers and business users
 - collaboration, management and monitoring using web-based consoles
 - powerful rules and event integration

SUMMIT

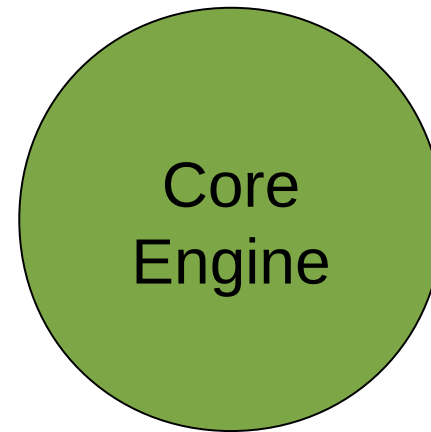
**JBoss
WORLD**

PRESENTED BY RED HAT

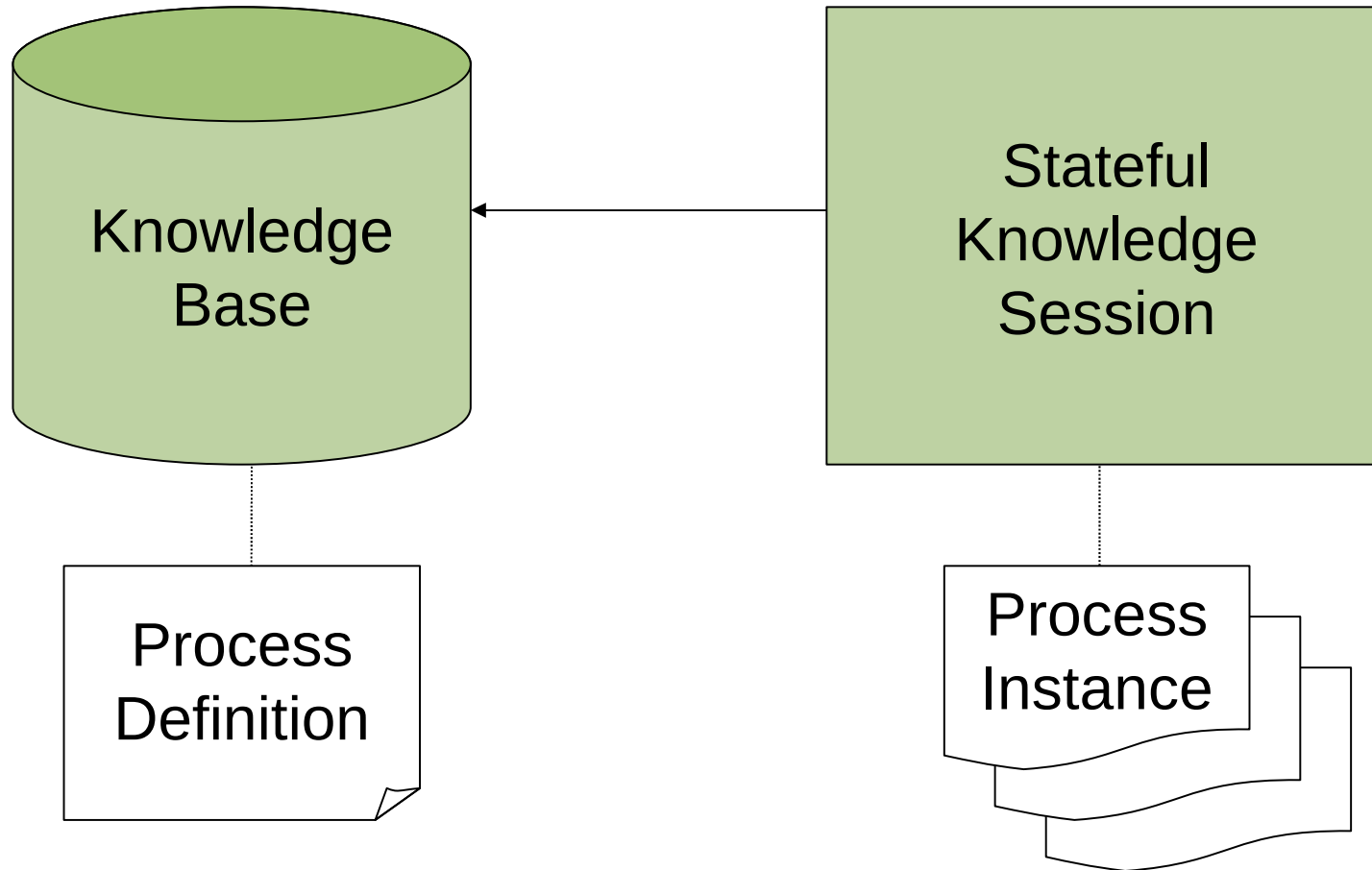


From Workflow to BPM

- Core engine is a workflow engine in pure Java
 - state transitions
 - lightweight
 - embeddable
 - generic, extensible



Core Engine



SUMMIT

**JBoss
WORLD**

PRESENTED BY RED HAT



Java Interface

ProcessRuntime interface

- `startProcess(processId)`
- `startProcess(processId, parameters)`
- `signalEvent(type, event)`
- `signalEvent(type, event, instanceId)`
- `abortProcessInstance(instanceId)`
- `getProcessInstance(instanceId)`
- ...



Java Example

// (1) Create knowledge base and add process definition

```
KnowledgeBuilder kbuilder = ...
```

```
kbuilder.add( ..., "sample.bpmn", ResourceType.BPMN2);
```

```
KnowledgeBase kbase = kbuilder.newKnowledgeBase();
```

// (2) Create new stateful knowledge session

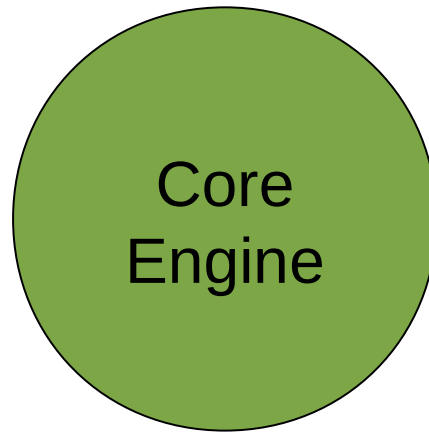
```
StatefulKnowledgeSession ksession =  
    kbase.newStatefulKnowledgeSession();
```

// (3) Start a new process instance

```
ksession.startProcess("com.sample.bpmn.hello");
```



From Workflow to BPM



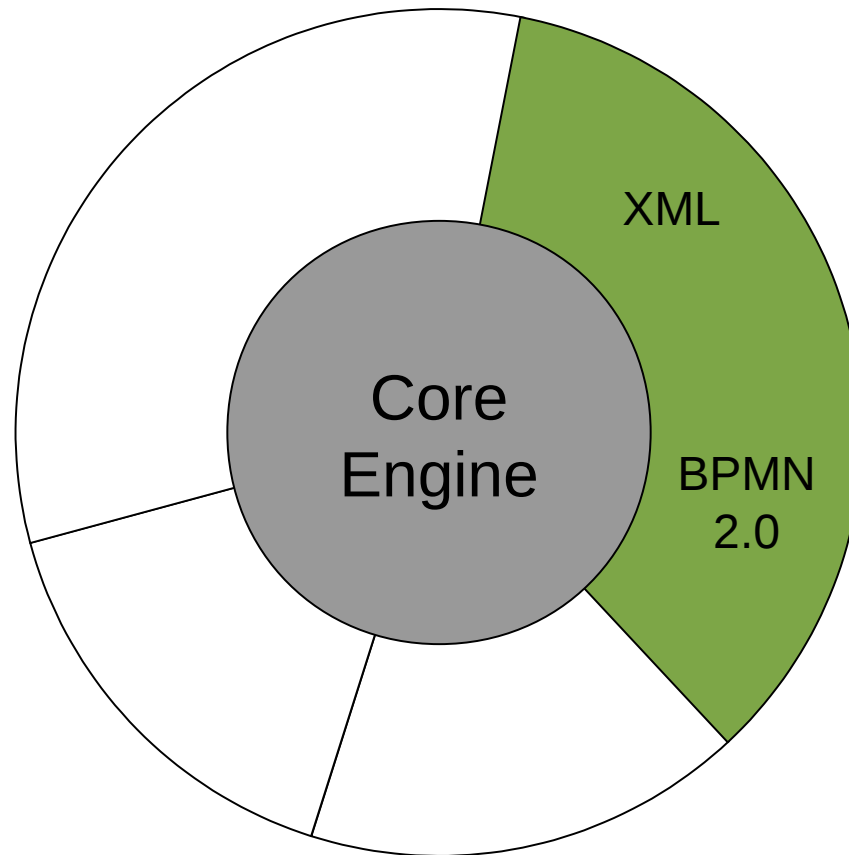
SUMMIT

**JBoss
WORLD**

PRESENTED BY RED HAT



From Workflow to BPM



SUMMIT

JBoss
WORLD

PRESENTED BY RED HAT

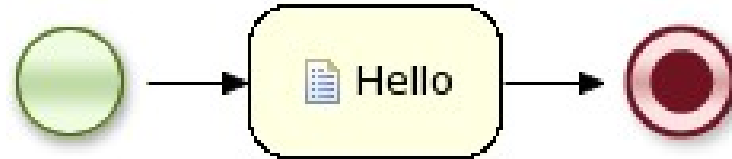


BPMN 2.0

- **OMG specification**
 - Model
 - Notation
 - Execution semantics
- Understandable by all business users
- Process, collaboration, choreography
- Extensible



BPMN 2.0 Example



```
<definitions ... >
```

```
<process id="com.sample.bpmn.hello" name="Hello World" >
```

```
<startEvent id="_1" name="StartProcess" />
```

```
<sequenceFlow sourceRef="_1" targetRef="_2" />
```

```
<scriptTask id="_2" name="Hello" >
```

```
<script>System.out.println("Hello World");</script>
```

```
</scriptTask>
```

```
<sequenceFlow sourceRef="_2" targetRef="_3" />
```

```
<endEvent id="_3" name="EndProcess" />
```

```
</process>
```

```
</definitions>
```

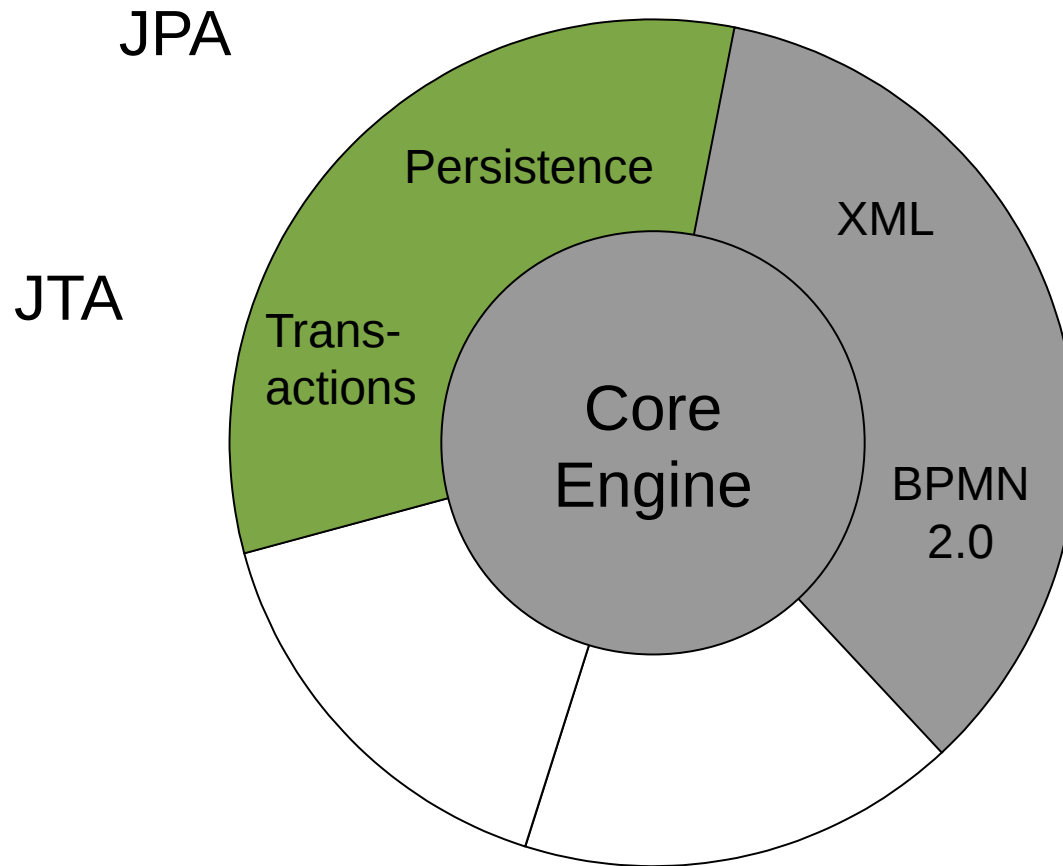
SUMMIT

JBoss
WORLD

PRESENTED BY RED HAT



From Workflow to BPM



SUMMIT

**JBoss
WORLD**

PRESENTED BY RED HAT

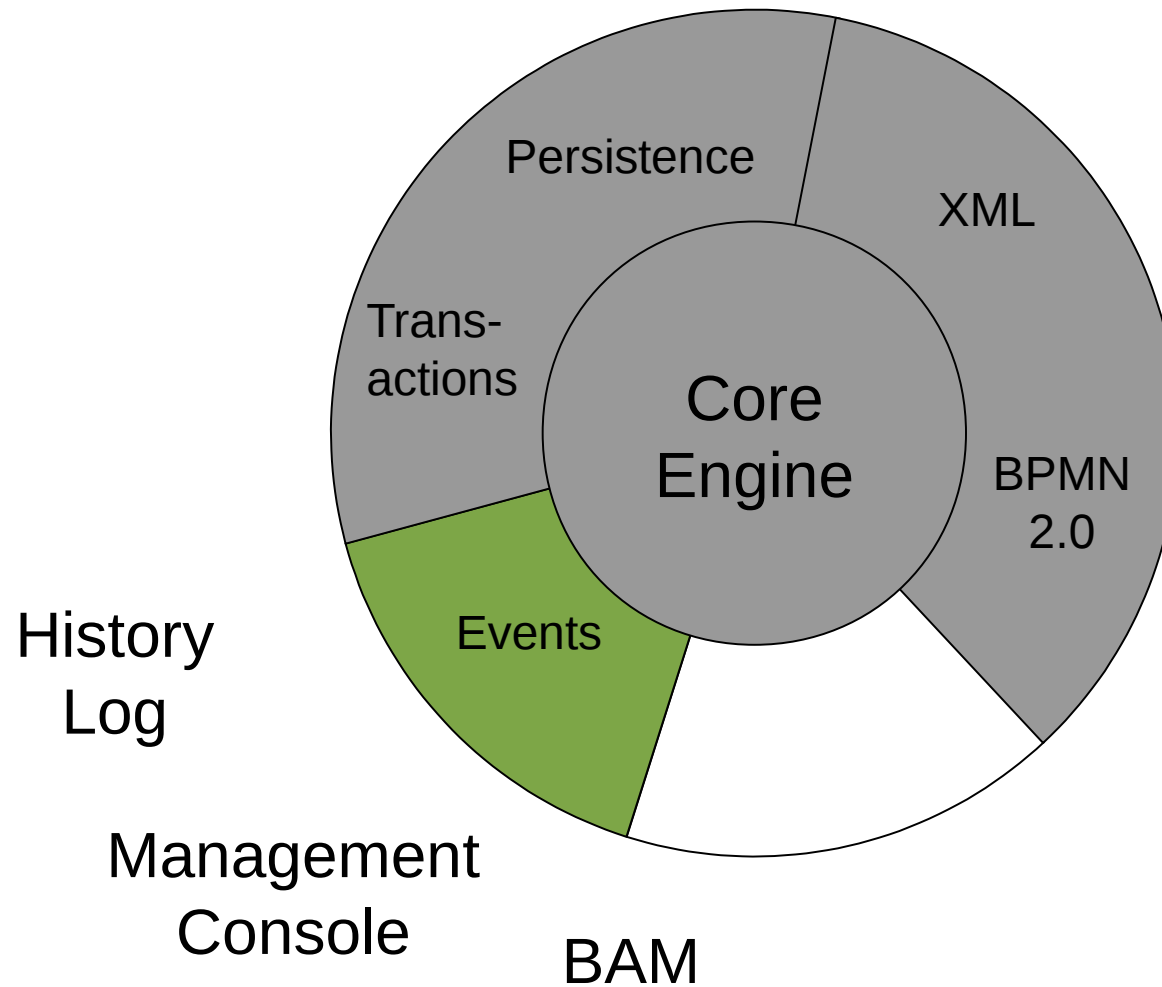


Persistence and Transactions

- Persistence (JPA, pluggable)
 - Runtime persistence
 - History logging
 - Services
- Transactions (JTA, pluggable)
 - Command-scoped
 - User-defined



From Workflow to BPM



SUMMIT

JBoss
WORLD

PRESENTED BY RED HAT

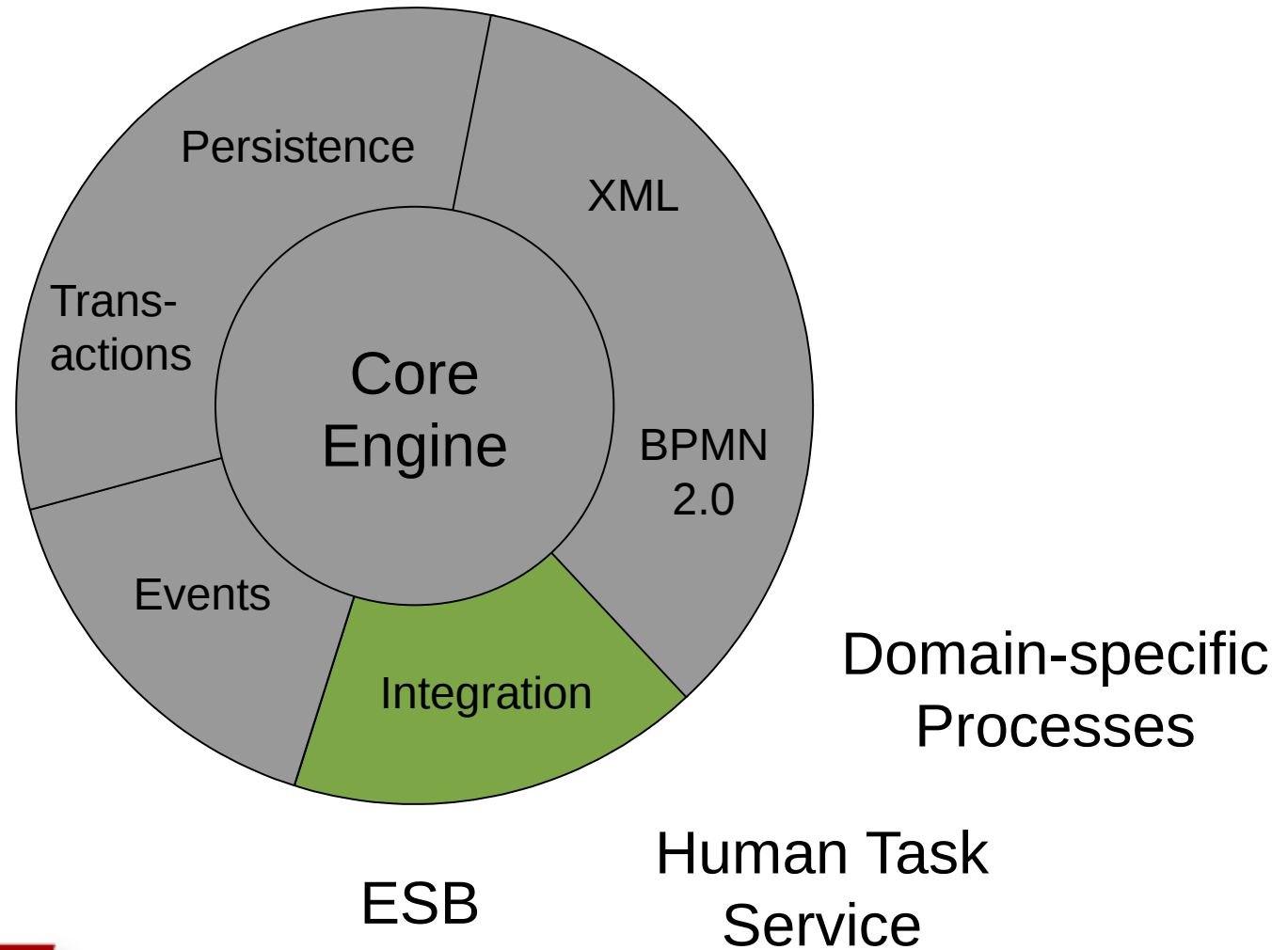


Console

- Web-based management
- Business user
- Features
 - Process instance management
 - User task lists / forms
 - Reporting



From Workflow to BPM



SUMMIT

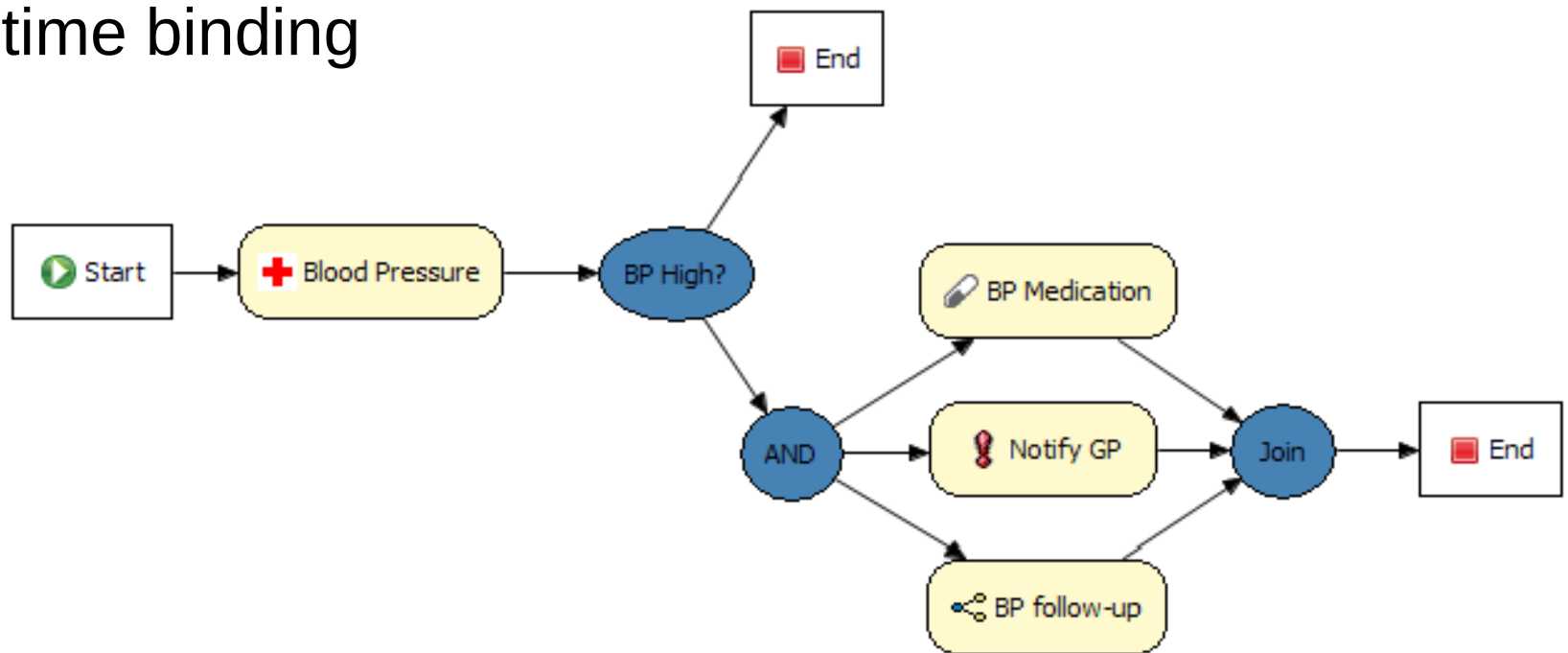
**JBoss
WORLD**

PRESENTED BY RED HAT



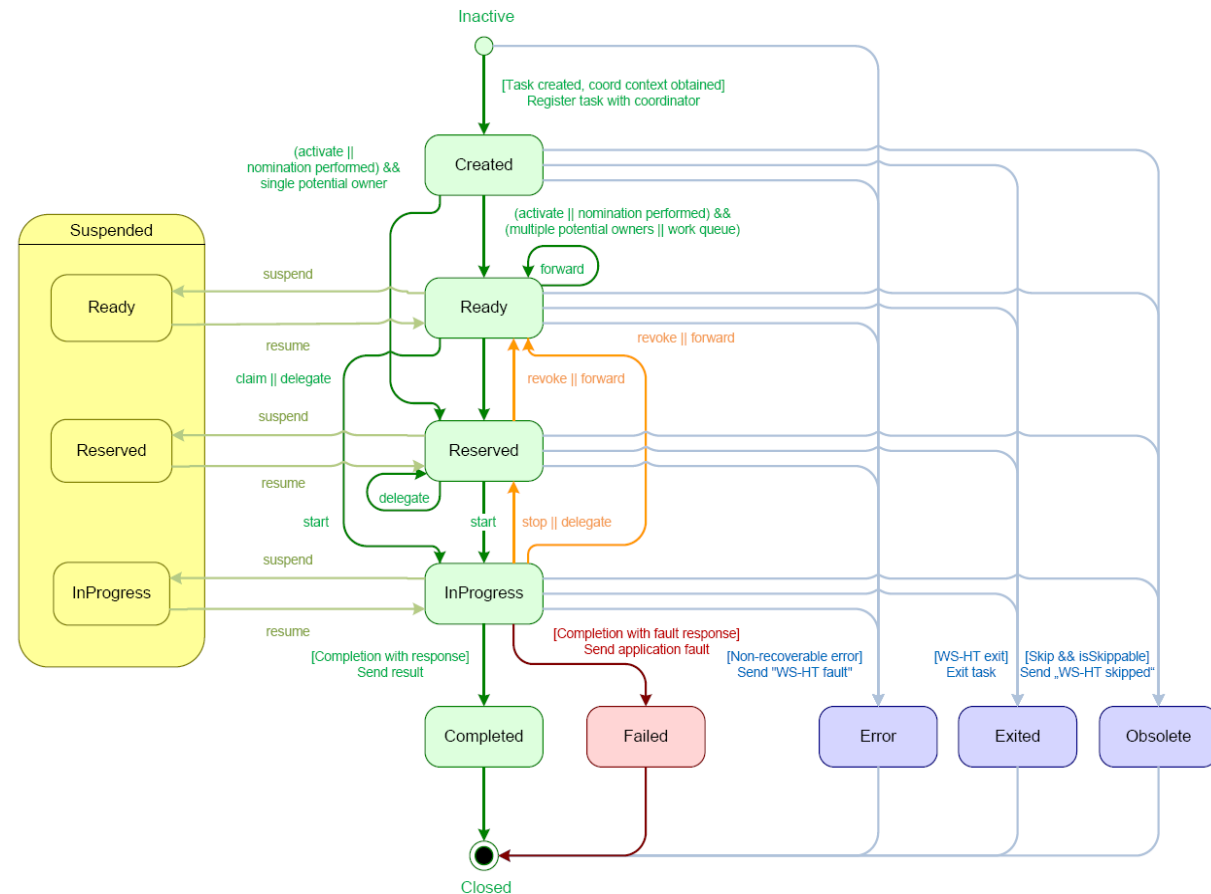
Domain-specific Processes

- Extend palette with domain-specific, declarative service nodes
 - define input / output parameters
 - runtime binding

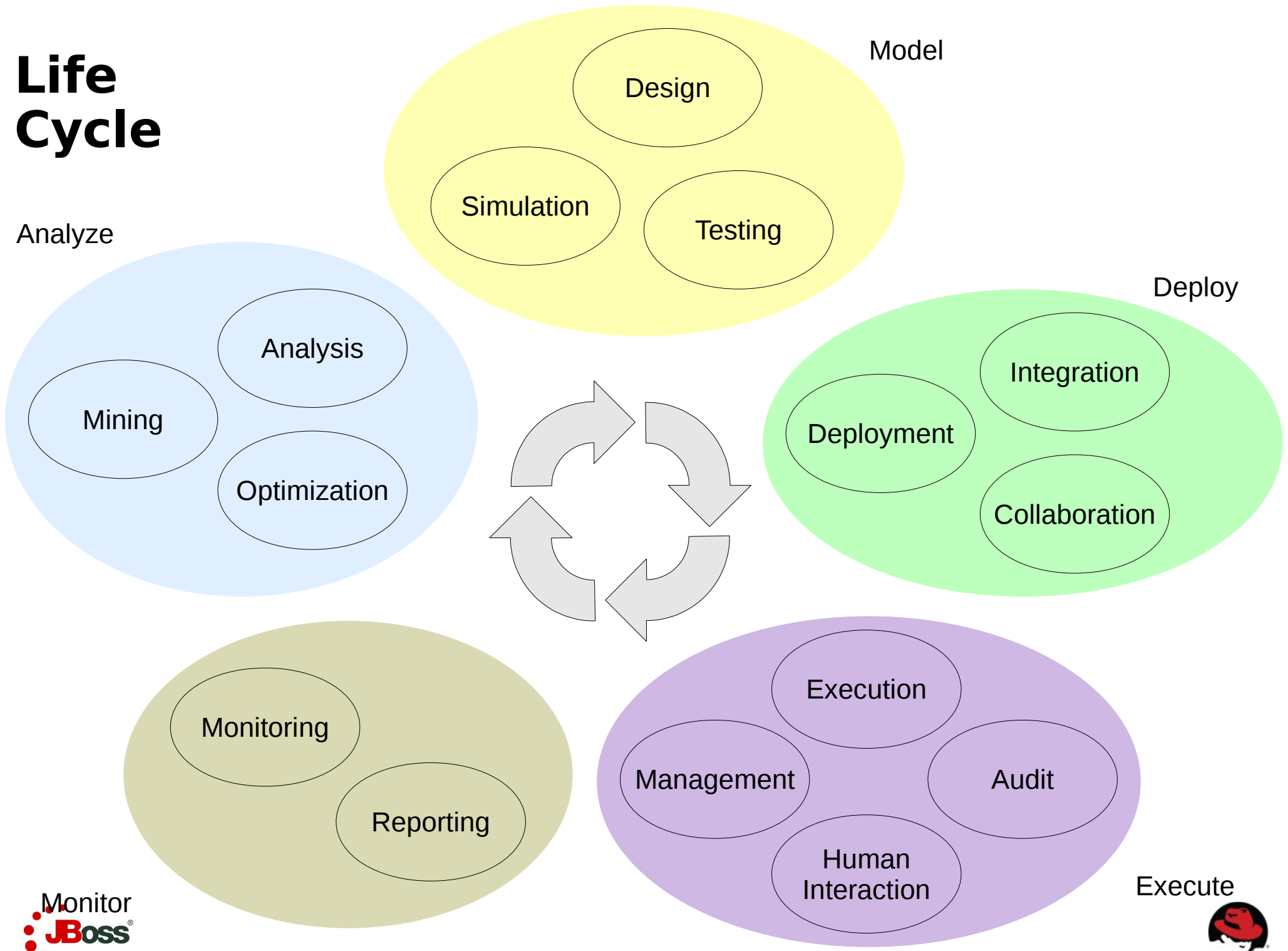


Human task service

- User task
- Human task service (WS-HT)
 - Task lists
 - Task life cycle
- Task clients
 - Task forms



Life Cycle



Analyze

Model

Deploy

Execute



Processes + Rules + Events



Combining processes and rules

- Integration
 - From loose coupling (decision services)
 - To advanced integration (process rules)
- Unification
 - Rules and processes are different types of business knowledge assets
 - Tooling (IDE, repository, management)



Knowledge Repository

- Guvnor as knowledge repository
 - Processes
 - Rules
 - Task and process forms
 - Model
- Web-based process editor (Oryx)
- Build, deploy, test, manage and collaboration features



Architecture

- From “embedded” to “as a service”
- Command-based
- Different underlying technologies
 - Java component (embedded, JNDI)
 - REST service
 - Web service
 - EJB
- # of (independent) session





Demo

Roadmap

- jBPM 5.0: Februari 2011
- jBPM 5.1: NOW ...
 - Improve designer to support full round-tripping
 - New Eclipse BPMN2 editor
 - Lots of small feature improvements and bug fixes
- jBPM 5.2 – jBPM 6.x
 - Simulation / testing / replay
 - Flexible, adaptive, goal-oriented processes
 - Integrated “no-code” tooling (form builder, etc.)

SUMMIT

**JBoss
WORLD**

PRESENTED BY RED HAT



jBPM5: What, where?

- [jBPM home page](#)
- Source <http://github.com/droolsjbpm/jbpm>
- Hudson <http://hudson.jboss.org/hudson/job/jBPM>
- Blog <http://kverlaen.blogspot.com/>
- #jbpm on irc.codehaus.org
- jbpm-dev@jboss.org
- [jBPM user forum](#)

SUMMIT

**JBoss
WORLD**

PRESENTED BY RED HAT



**JOIN THE CONVERSATIONS AND STAY
IN TOUCH WITH JBOSS YEAR ROUND!**

LIKE US ON FACEBOOK

facebook.com/jboss

FOLLOW US ON TWITTER

@JBossDeveloper

@JBossOperations

@JBossNews

READ THE BLOG

redhat.com/about/news/blog/
jboss.org/feeds/

SUMMIT

**JBoss
WORLD**

PRESENTED BY RED HAT

