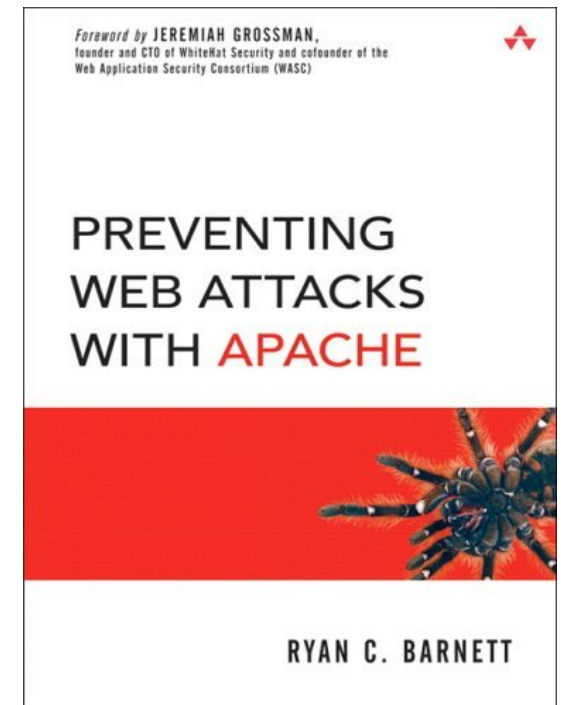




ModSecurity 2.0 Webcast:
Answers To Common Questions

Who am I?

- Breach Security
 - ModSecurity Community Manager
 - Director of Application Security Training
- Courseware Developer/Instructor for the SANS Institute
- Center for Internet Security's Apache Benchmark Project Team Leader
- Web Application Security Consortium (WASC) Member
- Author of Preventing Web Attacks with Apache (Addison/Wesley)



Official ModSecurity Training

- Developing ModSecurity Courses and a Certification (Estimated Q1 2007 availability)
 - Deployment and Management
 - Rules Writing Workshop
 - Breach Certified ModSecurity Expert (BCME)
- Will be available in two formats
 - Online – self paced
 - Onsite instruction (depending on class size)

Poll Questions

- In order to better support the ModSecurity Community, we need to fully understand its requirements and needs
- Please answer the following Poll Questions related to ModSecurity
- Your responses will help to drive future development and prioritization of offerings



Common Question:
What's new in ModSecurity 2.0?

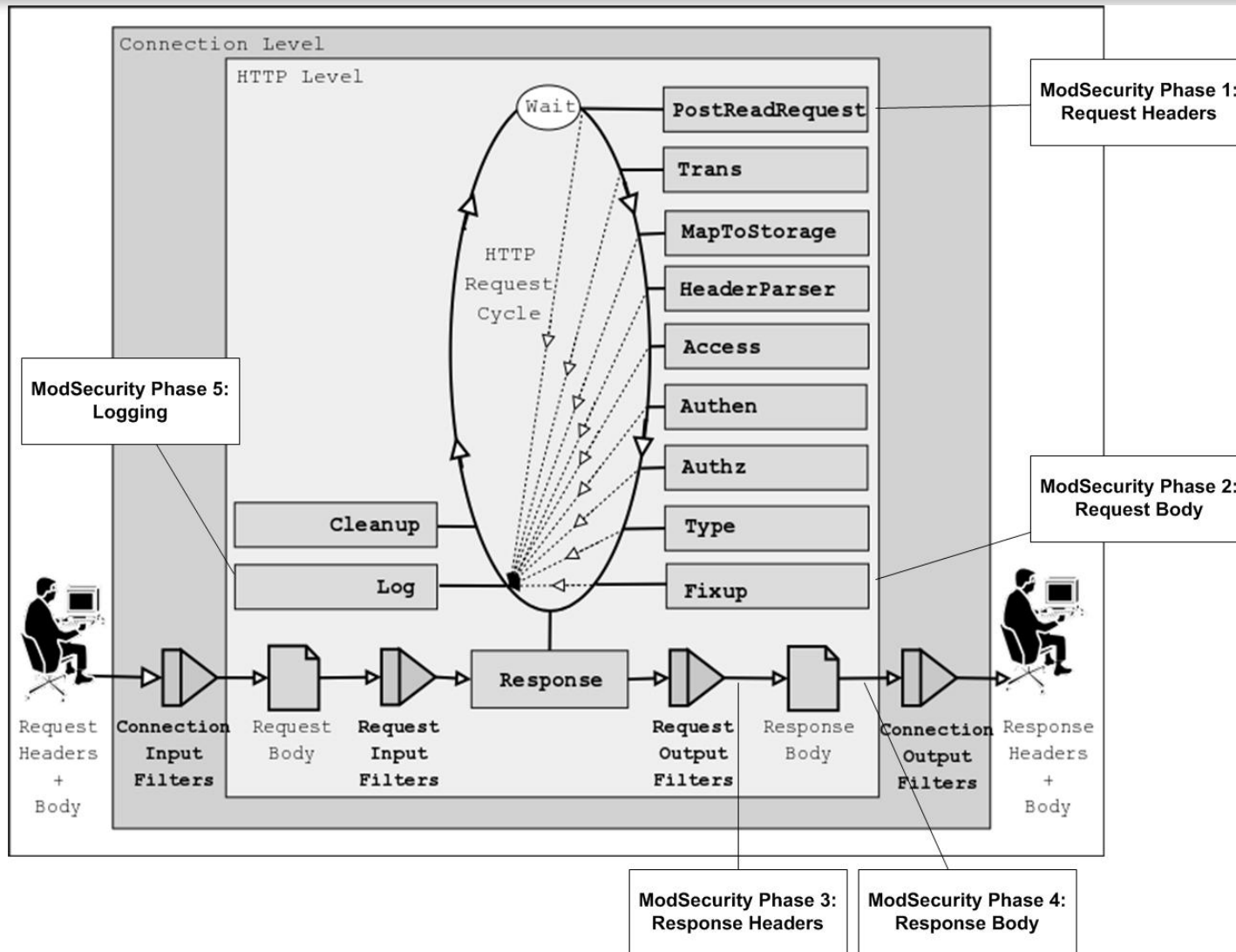
New ModSecurity 2.0 Features

- Five processing phases (where there were only two in 1.9.x). These are: request headers, request body, response headers, response body, and logging. Those users who wanted to do things at the earliest possible moment can do them now.
- Per-rule transformation options (previously normalization was implicit and hard-coded). Many new transformation functions were added.
- Transaction variables. This can be used to store pieces of data, create a transaction anomaly score, and so on.
- Data persistence (can be configured any way you want although most people will want to use this feature to track IP addresses, application sessions, and application users).
- Support for anomaly scoring and basic event correlation (counters can be automatically decreased over time; variables can be expired).
- Support for web applications and session IDs.
- Regular Expression back-references (allows one to create custom variables using transaction content).
- There are now many functions that can be applied to the variables (where previously one could only use regular expressions).
- XML support (parsing, validation, XPath).

New Features – Processing Phases

- Five processing phases (where there were only two in 1.9.x)
 - Phase 1 - Request headers
 - Phase 2 - Request body
 - Phase 3 - Response headers
 - Phase 4 - Response body
 - Phase 5 - Logging
- Those users who wanted to do things at the earliest possible moment can do them now
- This many phases allow you to decide what you want to happen at key points of transaction processing

ModSecurity 2.0 Processing Phases



New Features - Transformation Functions (1)

- Transformation functions will automatically convert data before matching
- Previously, normalization was implicit and hard-coded
- Many new functions were added

lowercase

hexDecode

replaceNulls

hexEncode

compressWhitespace

htmlEntityDecode

replaceComments

escapeSeqDecode

urlDecode

normalisePath

urlDecodeUni

normalisePathWin

base64Encode

md5

base64Decode

sha1

New Features – Data Persistence/Collections

- Can now track multiple requests!
- Can be configured any way you want although most people will want to use this feature to track IP addresses, application sessions, and application users
- **initcol** – persistent collection based on source IP:
`SecAction initcol:ip=%{REMOTE_ADDR},nolog,pass`
- **setsid** – session storage based on app session ID:
`SecRule REQUEST_COOKIES:PHPSESSID !^$
chain,nolog,pass
SecAction setsid:%{REQUEST_COOKIES.PHPSESSID}`

The Advantage of Variables

- Variables allow you to move from the "all-or-nothing" type of rules to a more sensible anomaly-based approach.
- The all-or-nothing approach works well when you want to prevent exploitation of known problems or enforce positive security, but it does not work equally well for anomaly detection or multiple request issues (DoS).
- For the latter it is much better to establish a per-transaction anomaly score and have a multitude of rules that will contribute to it.
- Then, at the end of your rule set, you can simply test the anomaly score and decide what to do with the transaction: reject it if the score is too large or just issue a warning for a significant but not too large value.

Variable Actions

- Working with variables:

set the IP collection score to 10

setvar:ip.score=10

increase the IP collection score by 5

setvar:ip.score=+5

remove the IP collection score

setvar:!ip.score

decrease the IP collection score by 60 points every hour

deprecatevar:ip.score=60/3600

expire a blocked IP collection after an hour

expirevar:ip.blocked=3600

Full Example – Initcol/Variables

```
#Specify the local directory for collection storage
```

```
SecDataDir /path/to/apache/logs/state
```

```
# Initiate a collection based on the source IP address
```

```
SecAction initcol:ip=%{REMOTE_ADDR},nolog,pass
```

```
SecRule IP:BLOCKED "@gt 0"
```

```
# Increase the IP collection score based on filter hits
```

```
SecRule REQUEST_FILENAME "/cgi-bin/phf" pass,setvar:ip.score=+10
```

```
SecRule REQUEST_FILENAME "cmd.exe" pass,setvar:ip.score=+10
```

```
SecRule REQUEST_METHOD "TRACE" pass,setvar:ip.score=+5
```

```
# Evaluate the overall IP collection score
```

```
SecRule IP:SCORE "@ge 30" \
```

```
"setvar:ip.blocked=3600,deprecatvar:ip.blocked=1/1"
```



Common Question:

What type of security models does ModSecurity 2.0 support?

ModSecurity Protection Models (1)

1. Negative security model

- Looking for bad stuff/known attack signatures
- Core Rules – modsecurity_crs_40_generic_attacks.conf

2. Positive security model

- Verifying input is correct.
- Core Rules
 - modsecurity_crs_20_protocol_violations.conf.
 - modsecurity_crs_30_http_policy.conf

3. Anomaly-based Model

- Must be able to identify abnormal requests/responses
- Rules can be created to increase anomaly score based on 4XX/5XX level status codes

ModSecurity Protection Models (2)

4. External patching

- Also known as "just-in-time patching" or "virtual patching"
- Provides immediate protection from identified vulnerabilities

5. Extrusion Detection Model

- Monitoring outbound data to ensure sensitive information does not leave your network (i.e. – Information Leakage)
- Core Rules – `modsecurity_crs_50_outbound.conf`

6. Heuristic-based Model

- Statistical calculation which correlates various detection methods – signature match + RBL status
- ModSecurity now has this capability with the following new features:
 - Data persistence
 - Transactional/Session scoring
 - Blocking can be based on an overall score

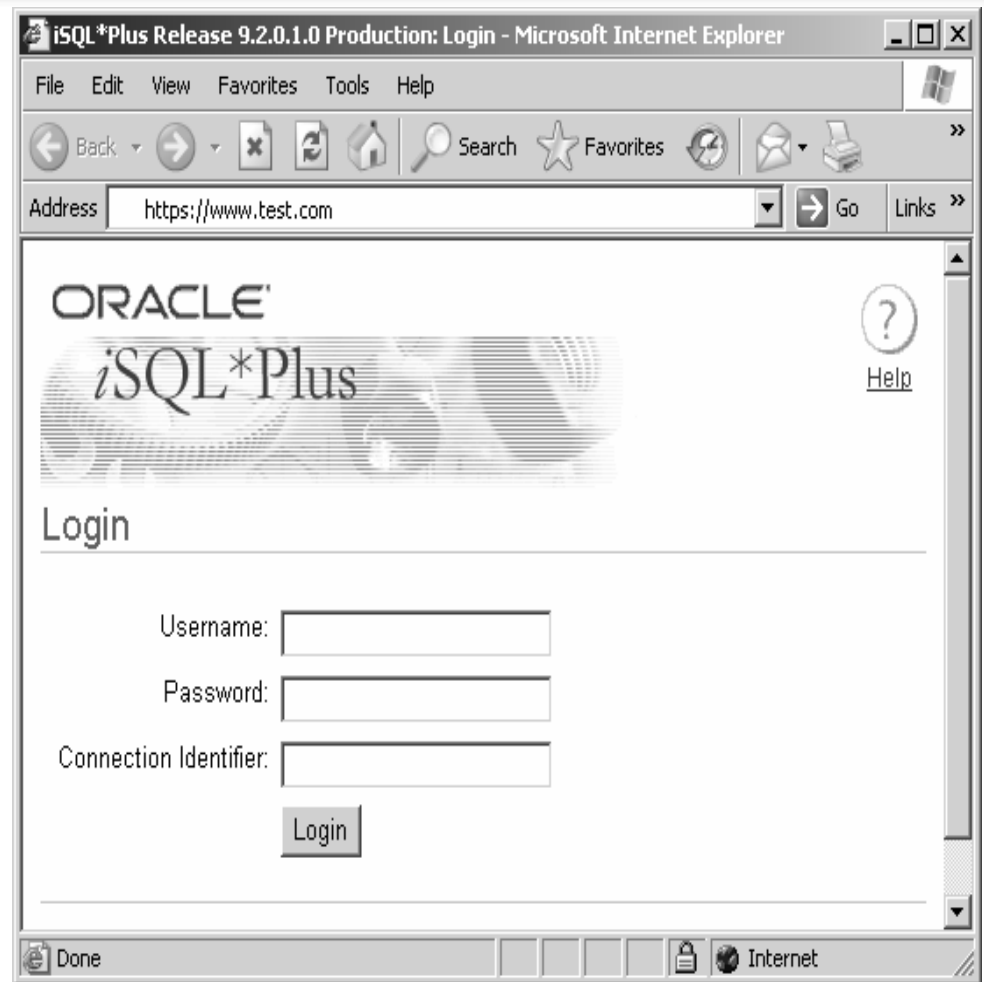


Common Question:

Can you show me some examples of ModSecurity 2.0 fixing specific issues?

Virtual Patch Example - Oracle iSQL*Plus buffer overflow

- **CVE 2002-1264** - Buffer overflow in Oracle iSQL*Plus web application of the Oracle 9 database server allows remote attackers to execute arbitrary code via a long USERID parameter in the isqlplus URL.
- **Oracle Response** - There is no workaround to address the potential security vulnerability identified above. Some patches took 2 months
- **With ModSecurity**, a translated Snort signature could have been used to implement an **Immediate Patch**



Convert Snort Signature to ModSecurity Format

■ Snort Signature

```
alert tcp $EXTERNAL_NET any -> $HTTP_SERVERS $HTTP_PORTS
(msg:"WEB-MISC Oracle iSQLPlus login.uix username
overflow attempt"; flow:to_server,established;
uricontent:"/login.uix"; nocase;
pcre:"/username=[^&\x3b\r\n]{250}/smi";
reference:bugtraq,10871;
reference:url,www.nextgenss.com/advisories/ora-
isqlplus.txt; classtype:web-application-attack; sid:2703;
rev:1;)
```

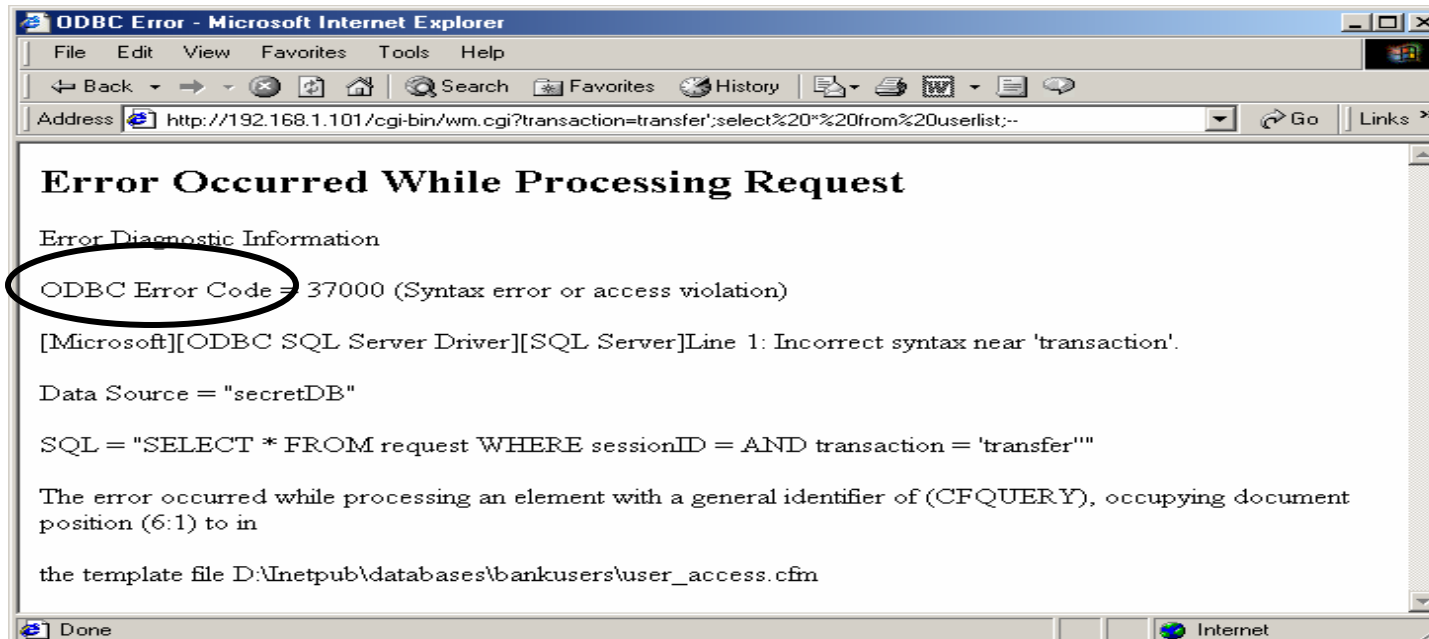
■ ModSecurity Rule

```
SecRule REQUEST_URI "login.uix$" "chain,deny,status:403,\
phase:2,msg:'Oracle iSQLPlus login.uix username overflow
attempt'"
SecRule REQUEST_BODY "username=[^&\x3b\r\n]{250}"
```

Extrusion Detection – DB Errors

- ModSecurity can identify and block outbound data such as error messages from back-end databases

```
SecRule RESPONSE_BODY "ODBC Error Code"  
"deny,log,status:503,phase:4,msg:'Database  
Error Message Detected'"
```



Denial of Service Protections

- Apache module - Mod_Evasive
 - Mod_Evasive does not use shared memory and can only identify multiple requests on the current httpd process
 - Evasion possibilities if client does not use Keep-Alives and forces the web server to spawn new processes for each request
- ModSecurity - SecGuardianLog directive + httpd-guardian perl script
 - Can identify and react to both DoS and Brute Force Attacks by monitoring the speed of requests
- Initcol – Use the “@ge” operator to evaluate the IP:UPDATE_RATE built-in collection variable.
 - SecRule IP:UPDATE_RATE “@ge 100”



Common Question:
How do I install ModSecurity 2.0?

ModSecurity 2.0 Installation

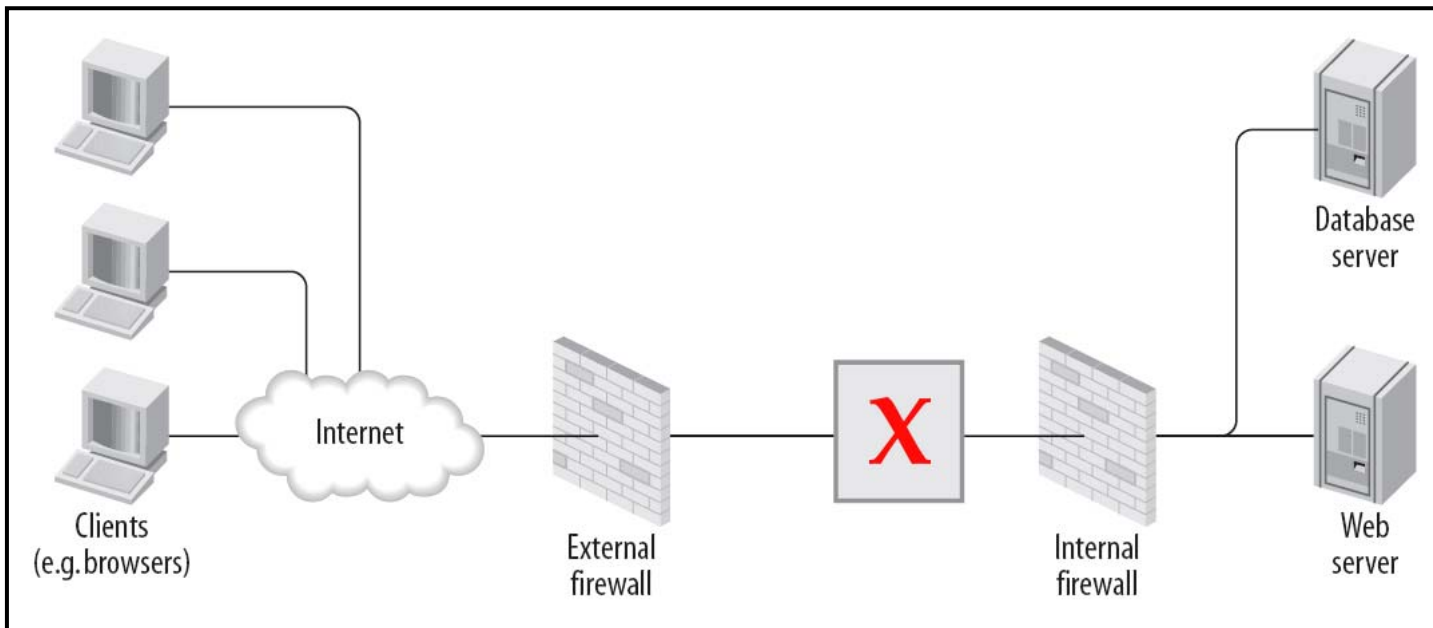
- Currently, ModSecurity 2.0 can only be installed as a DSO module in Apache
 - There are plans to update the configuration/compilation code to allow for static installations with Apache
- Although it is installed as a DSO, do not use apxs directly
 - ModSecurity 2.0 has a standard Makefile for compilation
 - It does use apxs behind the scenes
- Update the Makefile “top_dir” setting with the correct path to your Apache ServerRoot directory
- Use make and make install



Common Question:
How can I deploy ModSecurity?

Reverse Proxy Deployment

- Open Source ModSecurity users can deploy software on an Apache server acting as a Reverse Proxy server
- Breach ModSecurity Pro M1000 appliance



Reverse Proxy Deployment Pros/Cons

Pros

- Single point of access – choke points for applying security settings and makes management easier
- Increased performance – if SSL accelerators/caching used
- Network isolation – divides web into multiple tiers
- Network topology hidden from the outside world
- You can implement “Virtual Patches” to protect vulnerable web apps that either don’t have a patch available or where the code can not be changed

Cons

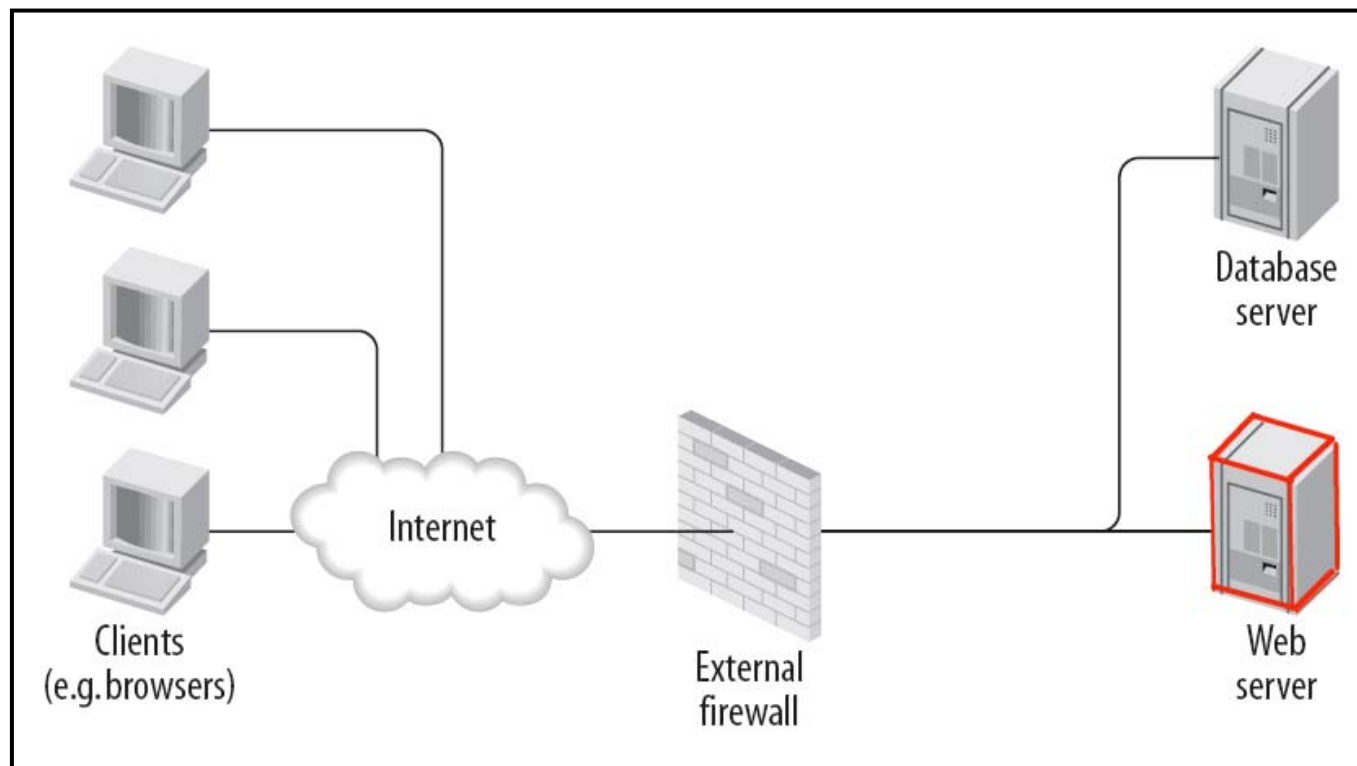
- A potential bottleneck
- Point of failure
- Requires changes to network (unless it's a transparent reverse proxy)
- Must terminate SSL (can be a problem if application needs to access client certificate data)

M1000 vs. Building Your Own Appliance

- Building a ModSecurity reverse proxy appliance is non-trivial. Need specific skill sets - expert in Apache, web application security, and ModSecurity.
- The M1000 is a Breach certified appliance, hardened for security, and updated with new releases for bug fixes and optimizations.
- M1000 includes certified rule sets guaranteed to be accurate and efficient. Includes regulator/application rule sets (PCI and OWA).
- The M1000 includes a graphical user interface with comprehensive alert management, configuration, and reporting facilities (HTML, PDF) that lower the total cost of ownership of the solution.
- The M1000 includes first year support and maintenance at no additional charge. In addition to leveraging the ModSecurity community, customers of the M1000 have access to the core developers and the world's experts in ModSecurity.

Embedded Mode Deployment

- Open Source ModSecurity users can deploy software on an Apache server to protect the local server and web application



Embedded Mode Deployment

Pros

- Easy to add
 - No network changes required
 - Little to no cost as no new hardware is required
- Not a point of failure.
 - Only protecting the local web server

Cons

- Only protects the local server
- Uses web server resources
- Management of configurations and log files is more difficult as you have multiple installs



Common Question:
How do I migrate from 1.X to 2.0?

Migration Consideration/Issues

- ModSecurity 2.0 only works with the Apache 2.X branch (no current code/support for Apache 1.X version)
 - If you are running Apache 2.X, then there is no problem.
 - If you have Apache 1.X hosts, then you can still use ModSecurity 2.0, but you would have to use it in a Reverse Proxy front-end.
- Rules Migration Issues
 - Must change SecFilter/SecFilterSelective to SecRule equivalents
 - Need to specify the correct processing phases/locations/transformation functions
- Integrating Custom Rules with Core Rules
 - Should specify your custom rules in a separate file
 - Call them up after the modsecurity_crs_10_config.conf file, but before the http protocol rules



Common Question:

Why are these new rules killing my server performance?

Performance Considerations – Writing Rules

- The number of rules used will impact performance, so be wary of implementing too many/unneeded negative filter rules
 - “GotRoot-Effect”
 - Converted Snort rules
- Joining/Grouping multiple rules into one RegEx line increases performance (Perl alternation feature with the “|” character)
 - Instead of individual lines –
 - ▶ SecRule REQUEST_URI “file1\.cgi”
 - ▶ SecRule REQUEST_URI “script2\.cgi”
 - Combine/Group them based on LOCATION
 - ▶ SecRule REQUEST_URI “(file1|script2)\.cgi”
- Optimized RegEx rules by using Grouping Only Parentheses can cut the validation time by 50%
 - SecRule REQUEST_URI “(?::(script[1-3]|file[1-3])\.cgi)”



Common Question:
**How do I manage my ModSecurity
Installations?**

ModSecurity Console (1)



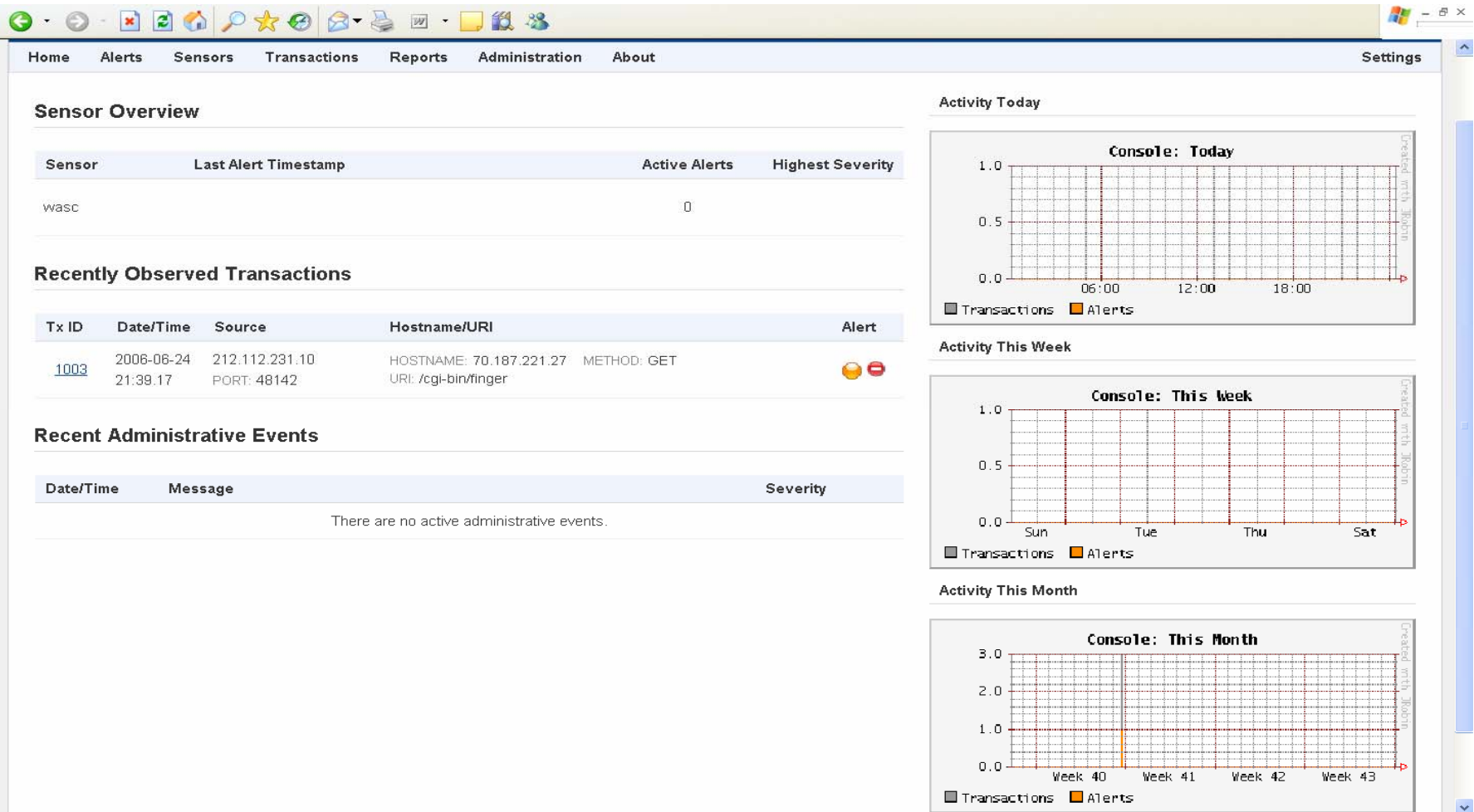
- **Open Source ModSecurity Console**

- Log & alert centralization solution, can capture alerts or entire traffic streams.
- Daemon with a GUI (web application).
- Single package (comes with its own web server and database).
- Runs on all platforms that support Java 1.4 or better.
- **Can received logs form a limited number or remote sensors (3)**
- **Does not provide Command and Control of remote sensor configs**

- **Enterprise Manager Console (Feb. 2007)**

- Will provide both centralized log management and Command and Control of remote ModSecurity configurations

Console Home Page



Transaction Search Interface

HTTP Transaction Search

Request

Transaction ID:

Hostname:

Method: **Any**

Request URI:

Protocol: **Any**

Content Type:

Is Valid? **Any**

Response

Status Code:

Content Type:

Duration: More than Less than
Please enter value in milliseconds.

Application

Web Application ID:

Session ID:

User ID:

Client

IP Address:

Referer:
Fragment search

User-Agent:
Fragment search

Username:
HTTP Authentication methods only

Time Restrictions

Start time: **Jan** **1** **1970**

00:00:00

End time: **Nov** **2** **2006**

23:59:59

Other

Sensor Tx ID:

Alert Message:
Fragment search

Alert Severity: **Any**

Was Blocked? **Any**

Alert Details Interface

The screenshot displays the ModSecurity Console interface in a Microsoft Internet Explorer browser window. The browser's address bar shows the URL `http://209.209.13.209:8886/viewTransaction?txId=1003`. The page title is "ModSecurity Console - Microsoft Internet Explorer".

The interface features a navigation menu at the top with the following items: Home, Alerts, Sensors, Transactions, Reports, Administration, About, and Settings. The main content area is titled "HTTP Transaction: 1003 (2006-06-29 08:00.24)".

Alert Messages

ID/Rev	Severity	Message
1 sid838 / 7 -	-	WEB-CGI finger access Access denied with code 200. Pattern match "/finger" at THE_REQUEST

Request Details

```
GET /cgi-bin/finger HTTP/1.1
Host: 70.187.221.27
Connection: close
Accept-Encoding: gzip
Accept: image/gif, image/x-xbitmap, image/jpeg, image/pjpeg, application/x-shockw \
ave-flash, application/vnd.ms-powerpoint, application/vnd.ms-excel, application/m \
sword, */*
Accept-Language: en-us
User-Agent: Mozilla/4.0 (compatible; MSIE 6.0; Windows NT 5.1; SV1; .NET CLR 1.1. \
4322) Web-Sniffer/1.0.24
Referer: http://web-sniffer.net/
```

Response Details

Transaction ID: 1003

Sensor	wasc - Ryan Barnett's Open Proxy Honeypot Goelocation - Falls Church, VA - USA Netblock - COX Communication
Timestamp	2006-06-29 08:00.24 (received at 2006-06-24 21:39:17)
Source	212.112.231.10 / 48142 pluto.lingo4u.de Germany
Destination	192.168.1.104 / 8000
Server	Apache
Producer	ModSecurity v1.9.2 (Apache 2.x)

[RAW data download](#) (1129 bytes)

Alert ID: 1001

Status	Closed
Resolution	Archived automatically

The browser's status bar at the bottom shows the URL `http://209.209.13.209:8886/UserSettings` and the Internet icon.

Wrap-Up

- Remember – Official ModSecurity Training is coming soon!
 - Online and Onsite offerings
- Beta version of the updated Reference Guide is available from the modsecurity.org website
 - In the `modsecurity-apache_2.1.0-rc5.tar.gz` archive
- Let's initiate Q&A on the `modsecurity-user-mail` list.
- Let me know what other Webcast Topics you would like to see.
- Please contact me directly with any commercial support questions - Ryan.Barnett@breach.com
- Thanks for your time.