

NetDirector Quick Install Guide

Table of Contents:

- x [Quick Install Introduction](#)
- x [Download NetDirector Software](#)
- x [Install NetDirector Server Manager](#)
- x [Connect to NetDirector Server Manager](#)
- x [Install NetDirector Agent](#)
- x [Administer Servers](#)

Quick Install Introduction

In order to manage your servers with NetDirector, you must install the NetDirector Server Manager and the NetDirector Server Agent. The NetDirector Server Manager can be installed on any system to remotely manage servers such as web, mail, DNS, SAMBA, and DHCP. The NetDirector Server Agent is installed on each server and works with the NetDirector Server Manager to enable central server management.

NetDirector Server Manager bundles the Tomcat web server and PostgreSQL database with the default installation. The NetDirector Server Manager can also use an existing Tomcat, PostgreSQL, or MySQL installation. However, MySQL is not bundled with the default NetDirector Server Manager installation. If you would like to use an existing Tomcat, PostgreSQL, or MySQL database, choose a custom installation when prompted for the installation type. For more information, see step 4 of the NetDirector Server Manager Installer.

NetDirector Server Manager and Server Agent can be installed as either the root user or a non-root user. If you run the Server Manager install as a non-root user and choose to use an existing Tomcat installation, the user needs to have permission to access the Tomcat installation directory and permission to restart the Tomcat service.

Download NetDirector Software

Download the NetDirector Server Manager and the NetDirector Server Agent from the Emu Software Website [stored under the Support -> Downloads link].

After the Server Manager download is complete, make the download file executable. To make the file executable, run the following command from your download directory: **chmod +x filename**

After the Server Agent download is complete, make the download file executable. To make the file executable, run the following command from your download directory:
chmod +x filename

Install NetDirector Server Manager

The NetDirector Server Manager supports a graphical or text mode installation and will launch the appropriate mode based on the detected display environment. For example, if you are working via ssh on a headless server, the installer will automatically run in text mode.

Graphical Mode: If the installer is run within an X window session, a graphical installer will automatically launch and guide you through the installation. You can advance the installation to the next step by selecting Forward. You can return to the previous installation step by selecting Back.

Text Mode: If the installer is run from a text only environment, a text based installer will automatically launch and guide you through the installation. The installation defaults are identified in [square brackets]. You can accept the default value by pressing Enter to advance the installer to the next step. Or type an alternate selection and press Enter to advance the installer to the next step. You can invoke the text mode installation from an X window session by launching the installer with the `[--mode text]` option. For example: `./filename --mode text`

The graphical installer is illustrated in the following procedure. If you use the text mode installation, the steps are the same. To install NetDirector Server Manager:

1. Launch the Server Manager installer with the command: `./filename`

The welcome screen of NetDirector Server Manager Setup is displayed.



2. **Review License Agreement.** You must accept the license agreement to continue the installation. Select "Yes" in response to the question "Do you accept this license?"
3. **Choose Installation Directory.** If you install as root, the default installation path is /opt/netdirector-2.8.d. If you install as non-root, the default installation path is \$HOME/netdirector-2.8.d. Select an installation directory.



4. **Select an Installation Type.** Choose "Default installation with bundled Tomcat and PostgreSQL" or "Custom installation with existing Tomcat and PostgreSQL."

Bundled Installation: The bundled installation is the default installation choice. If you choose the default installation, the Tomcat web server and the PostgreSQL database are installed from the NetDirector installation file. You will not be prompted for additional Tomcat or PostgreSQL configurations. Choose this option if you do not have an existing Tomcat or PostgreSQL installation.

Custom Installation: If you have an existing Tomcat web server or PostgreSQL or MySQL database installation, choose custom to use the existing installation. The installer will prompt you for the existing configuration settings. For each component installation, you can choose to install the bundled component, or you can choose to use an existing component installation.

If you choose the default bundled installation, skip ahead to **step 6**, [Install NetDirector Server Manager as Service](#). You will not be prompted for existing Tomcat or database configuration information. If you choose the custom installation, continue with **step 5, Custom Installation**.

5. **Custom Installation.** The following lettered installation steps only apply to custom installations.

A) **Install Tomcat.** Choose "Install Tomcat" or "Use current Tomcat"

installation."

If you choose to install Tomcat, NetDirector Server Manager will install a bundled copy of the Tomcat web server to the jakarta-tomcat directory within the NetDirector installation directory.

If you choose to use a current Tomcat installation, you will be prompted to enter the location of the Tomcat installation.

- B) **Select Database.** Choose "Install bundled PostgreSQL" or "Use existing system MySQL" or "use existing system PostgreSQL."

If you install the bundled PostgreSQL database, NetDirector Server Manager will install a new PostgreSQL database to the postgresql directory within the NetDirector installation directory.

If you use an existing PostgreSQL or MySQL database, you will be prompted to enter the database connection settings. Change the installer default settings for host address, port, user name, and password as needed. The default port for MySQL is 3306. The default port for PostgreSQL is 5432.

- C) **Existing Database.** If an existing NetDirector database exists on the server, you must choose to "Clear current data" or "Keep current data." If you choose to clear the current data, existing information will be lost.



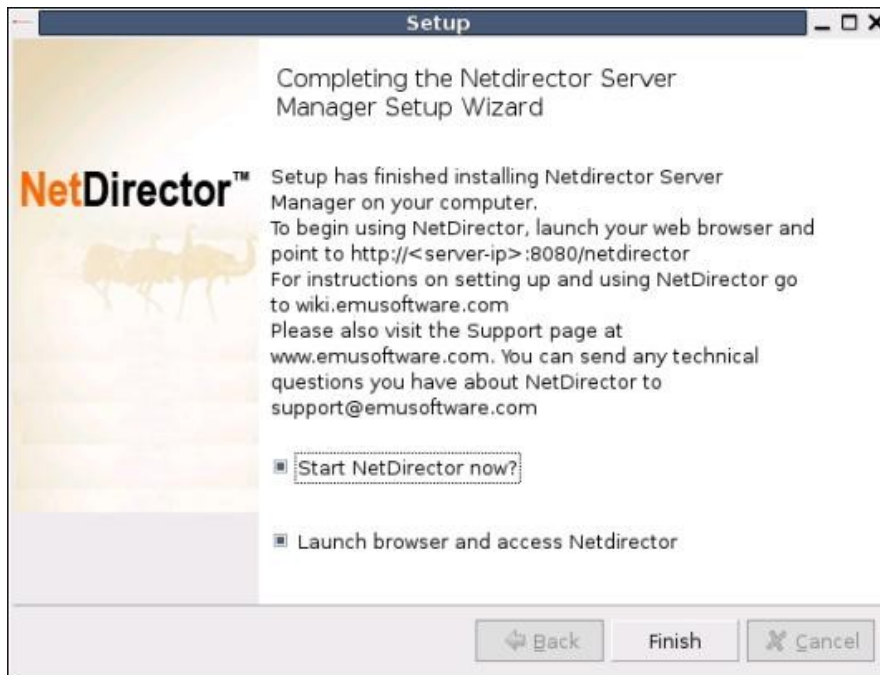
- D) **Install with SSL Support.** Select "Yes" to continue with a secure browser connection. Otherwise, select "No".

Secure Sockets Layer is a protocol that is used to encrypt and transmit data over a secure connection ensuring the communication between the browser and the server is private. You need to have an SSL certificate installed in the home directory of the user account that will be used to start the Tomcat web server.

6. **Install NetDirector Server Manager as a Service.** Emu Software recommends you select "Yes" so that the NetDirector Server Manager will be started every time the computer starts.



7. **Ready to Install.** Click Forward to begin the installation.
8. **Installing.** Please wait while setup installs NetDirector Server Manager on your computer.
9. **Complete the NetDirector Server Manager Setup.** The installation is complete. Select the options to "Start NetDirector now" and "Launch browser and access NetDirector." Click Finish to begin using NetDirector Server Manager.



Connect to NetDirector Server Manager

To connect to the NetDirector Server Manager, open a web browser and connect to <http://server:8080/netdirector>. The default user name is *admin* and the default password is *admin*. Once logged in, you can change the administrator password in the “Manage Users” screen. See [Administer Servers](#) for additional information.

Before you can administer individual servers with NetDirector Server Manager, you must install the NetDirector Agent on each server in your network that you wish to manage with NetDirector.

Install NetDirector Agent

To manage servers you need to install the NetDirector Agent on the servers to be managed and configure them to communicate with the NetDirector Server Manager. The NetDirector Agent supports a graphical or text mode installation and will launch the appropriate mode based on the detected display environment. You may also choose an unattended setup.

Graphical Mode: If the installer is run within an X window session, a graphical installer will automatically launch and guide you through the installation. You can advance the installation to the next step by selecting Next. You can return to the previous installation step by selecting Back.

Text Mode: If the installer is run from a text only environment, a text based installer will automatically launch and guide you through the installation. The installation defaults are identified in [square brackets]. You can accept the default value by pressing Enter to advance the installer to the next step. Or type an alternate selection and press Enter to advance the installer to the next step. You can invoke the text mode installation from an X

window session by launching the installer with the `[--mode text]` option. For example: `./filename --mode text`

Unattended Mode: The NetDirector Agent installer will also run in an unattended mode. In an unattended installation, you will not be prompted for any configuration information. You can invoke the unattended installation by launching the installer with the `[--mode unattended]` option. For example: `./filename --mode unattended`

The graphical installer is illustrated in the following procedure. If you use the text mode installation, the steps are the same. To install NetDirector Agent:

1. Launch the Server Agent installer with the command: `./filename`

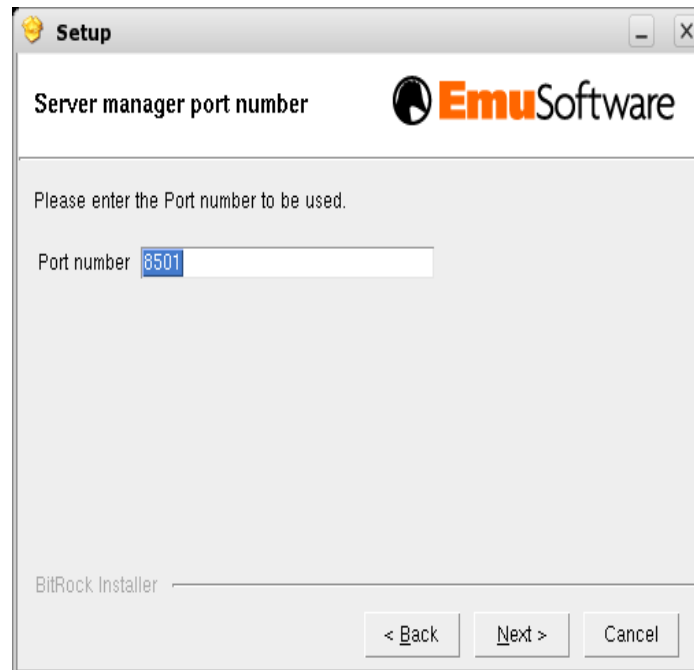
The welcome screen of NetDirector Server Agent Setup is displayed.

2. **Review License Agreement.** You must accept the license agreement to continue the installation. Select "Yes" in response to the question "Do you accept this license?"
3. **Choose Installation Directory.** If you install as root, the default installation path is `/opt/netdirectoragent-2.8.d`. If you install as non-root, the default installation path is `$HOME/netdirectoragent-2.8.d`. Select an installation directory.

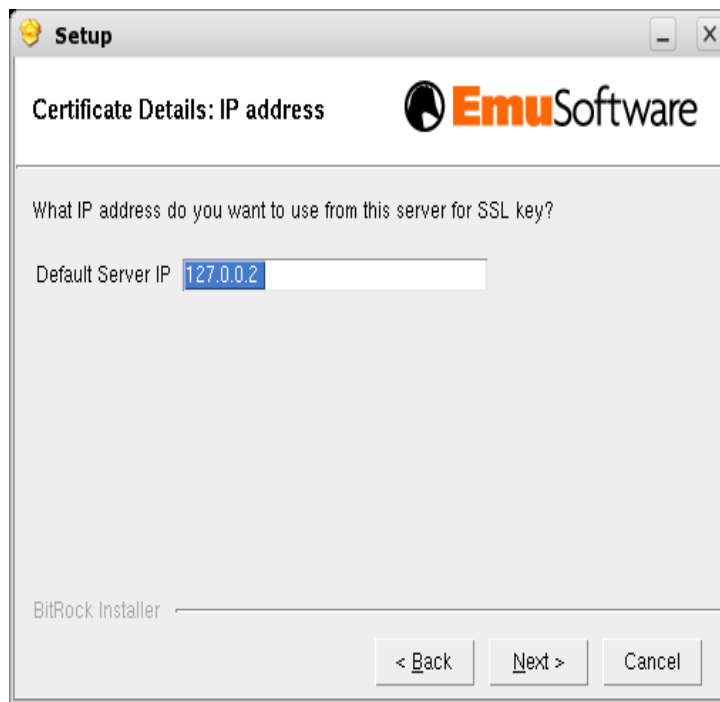


4. **Enter the Server Manager IP Address.** You must enter the IP Address of the server that the NetDirector Server Manager is installed on.

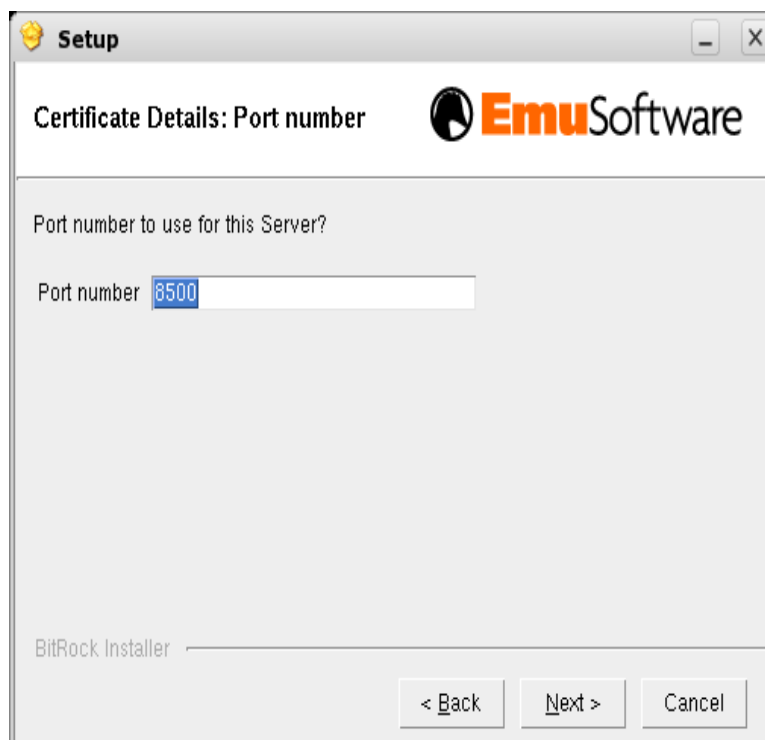
5. **Enter Server Manager Port number.** This is the port number that the agent will use to communicate with the NetDirector Server Manager. Make sure that this port is not blocked by firewalls or other security products. The default port is 8501.



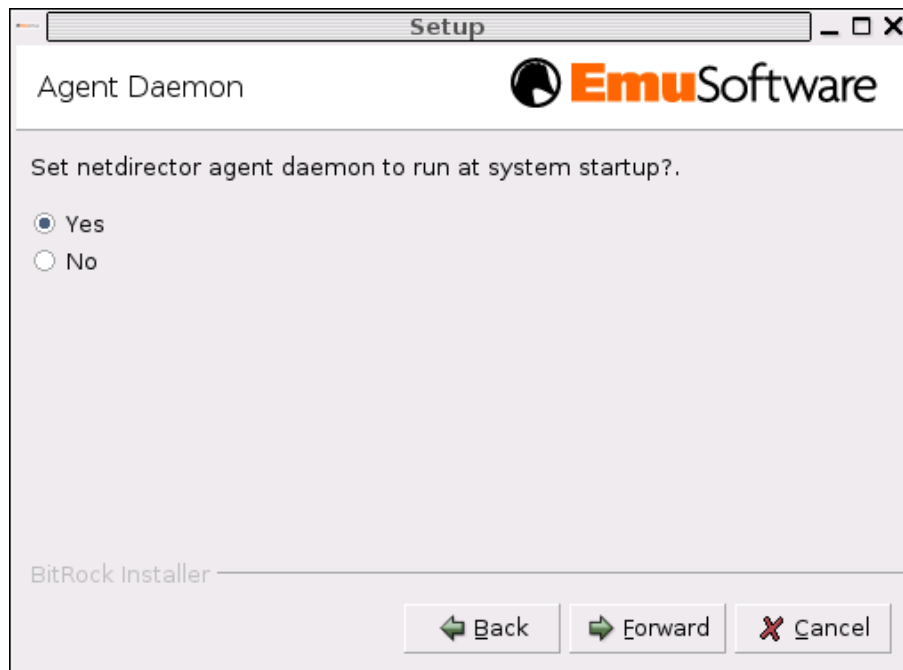
6. **Enter Certificate Details: IP address.** This is the IP address you want to use for the SSL key.



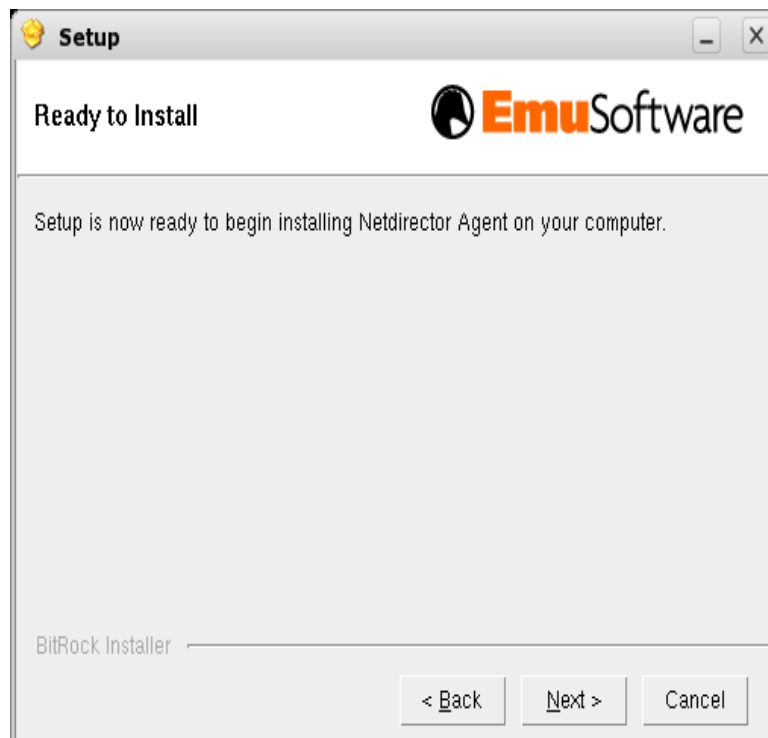
7. **Enter Certificate Details: Port number.** This the Port number to be used for the local SSL server. The default port is 8500.



8. **Configure Agent Daemon.** Select "Yes" to set the NetDirector agent daemon to run at server startup.



9. **Ready to Install.** Click Next to begin the installation.



10.Installing. Please wait while setup installs NetDirector Agent on your computer.

11.Complete the NetDirector Agent Setup. The installation is complete. Select the option to "Start agent now." You can now manage your servers by connecting to NetDirector Server Manager.

Administer Servers

Use the admin user to Manage Servers, Manage Roles, Manage Users, configure the System's Email preferences, view Scheduled Changes, and Rollback configuration changes. Administration of individual servers and services is role based, which means each administrator defined role has associated servers, services, and users. Individual users login to manage the servers and services associated with the user's assigned role(s).

For an introduction to the NetDirector administration functions, visit <http://wiki.emusoftware.com>. Select the Quick Start Guide from the Getting Started menu.

Revision 1.0 - MRH – 1/25/06

Revision 1.01 – MCB -2/1/06

Final Draft – MCB 2/9/06