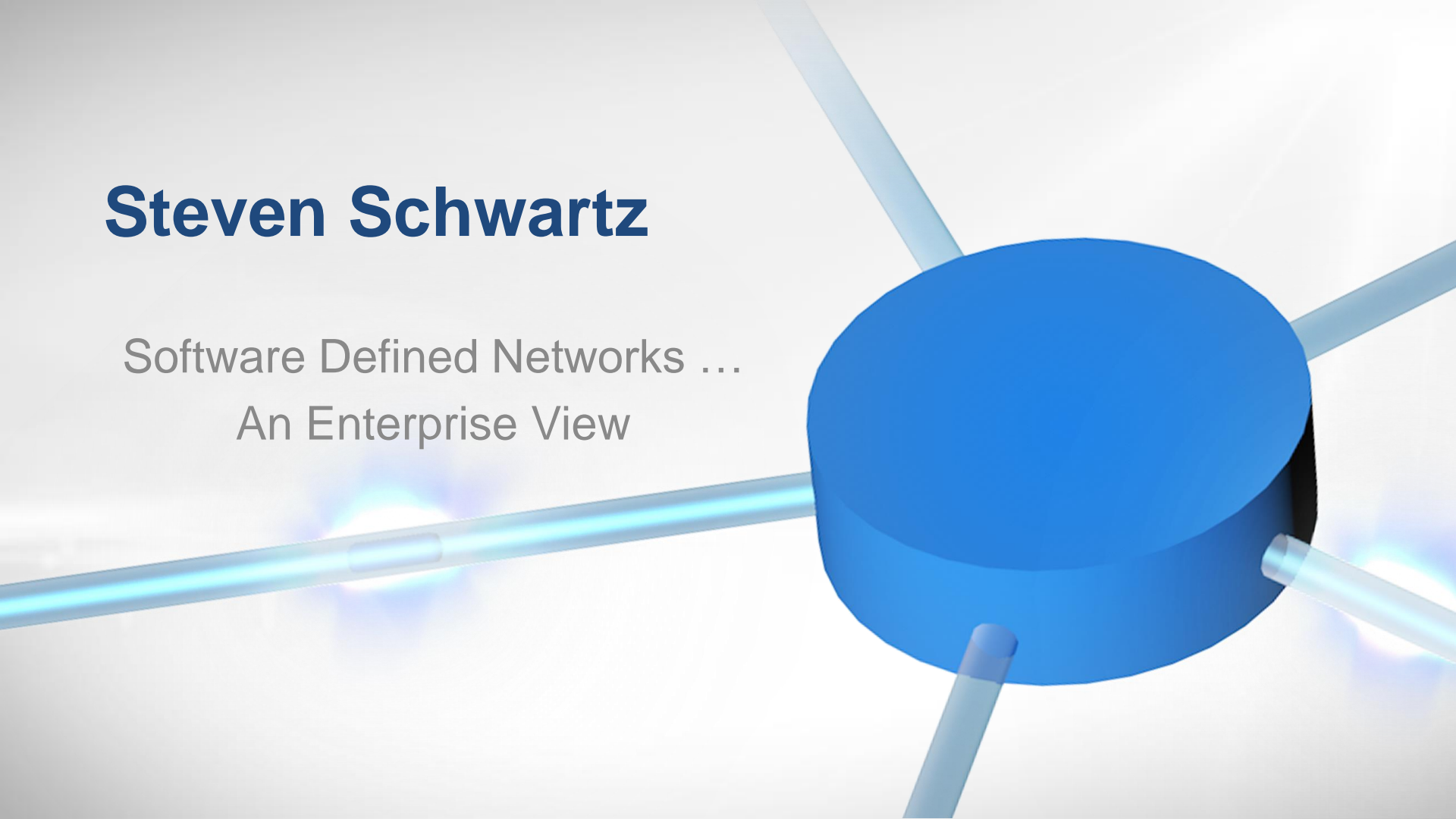


Steven Schwartz

Software Defined Networks ...
An Enterprise View

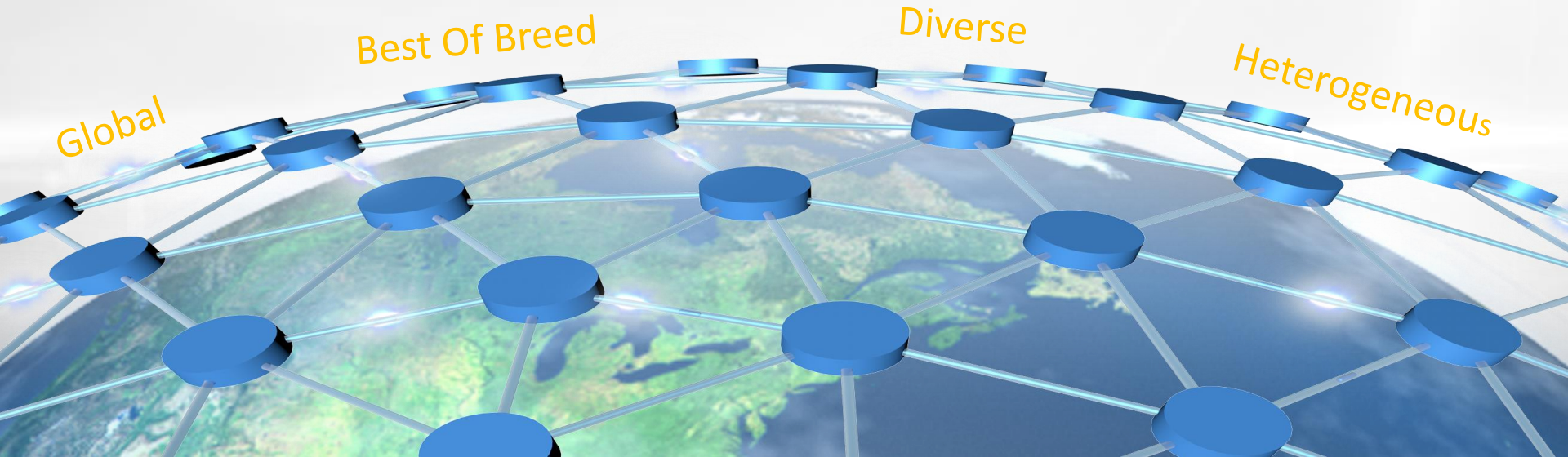


**Enterprise
Networks...**

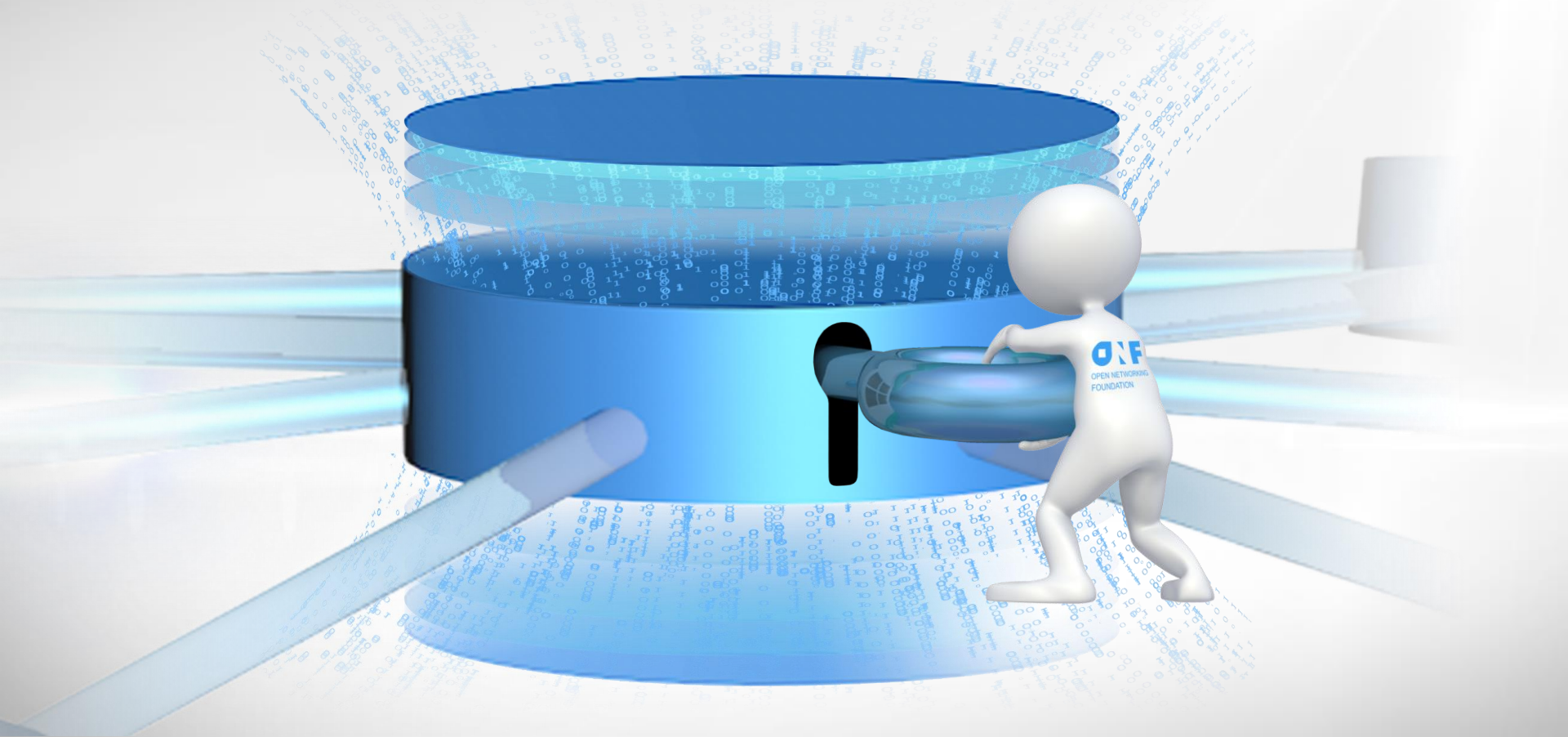
**An Evolving
Value
Proposition**



GSINet – The Goldman Sachs Global Network



SDN + Open Standards = The Network Unlocked



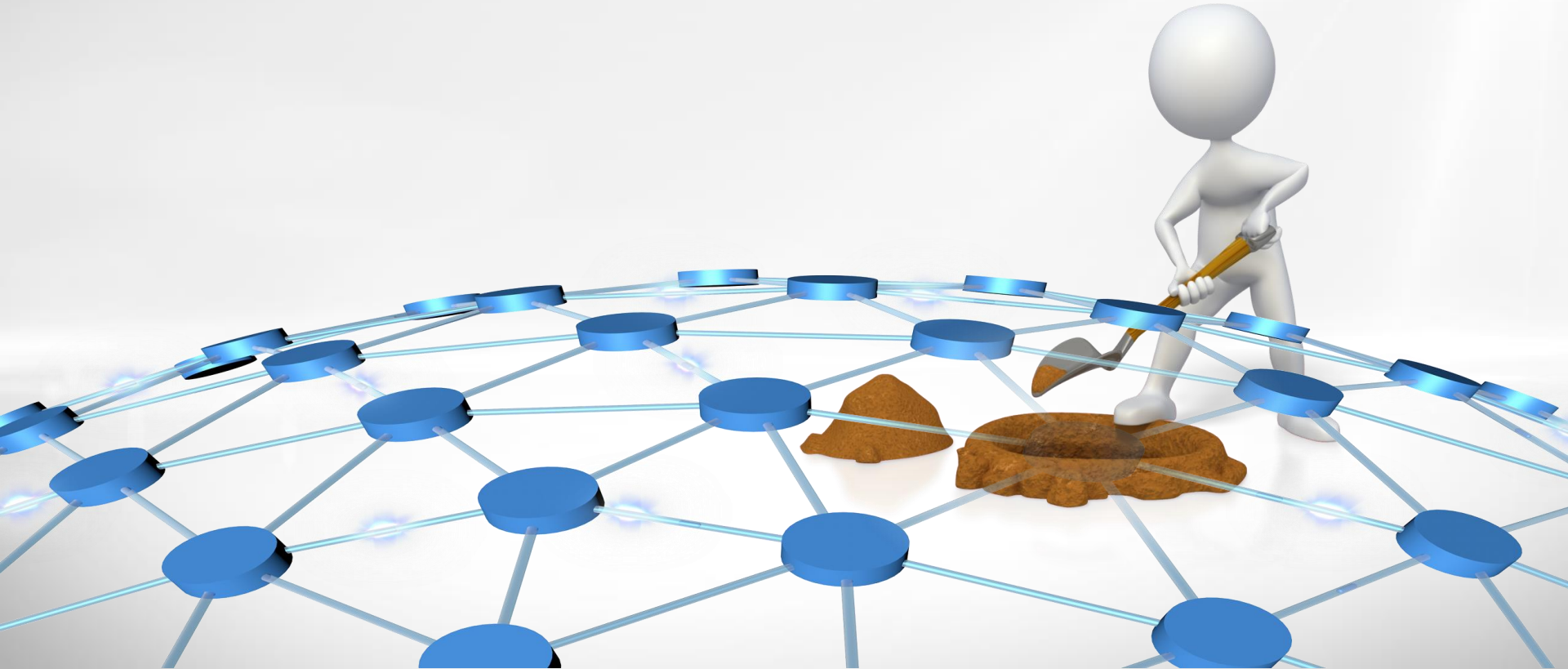
Software Defined Networks



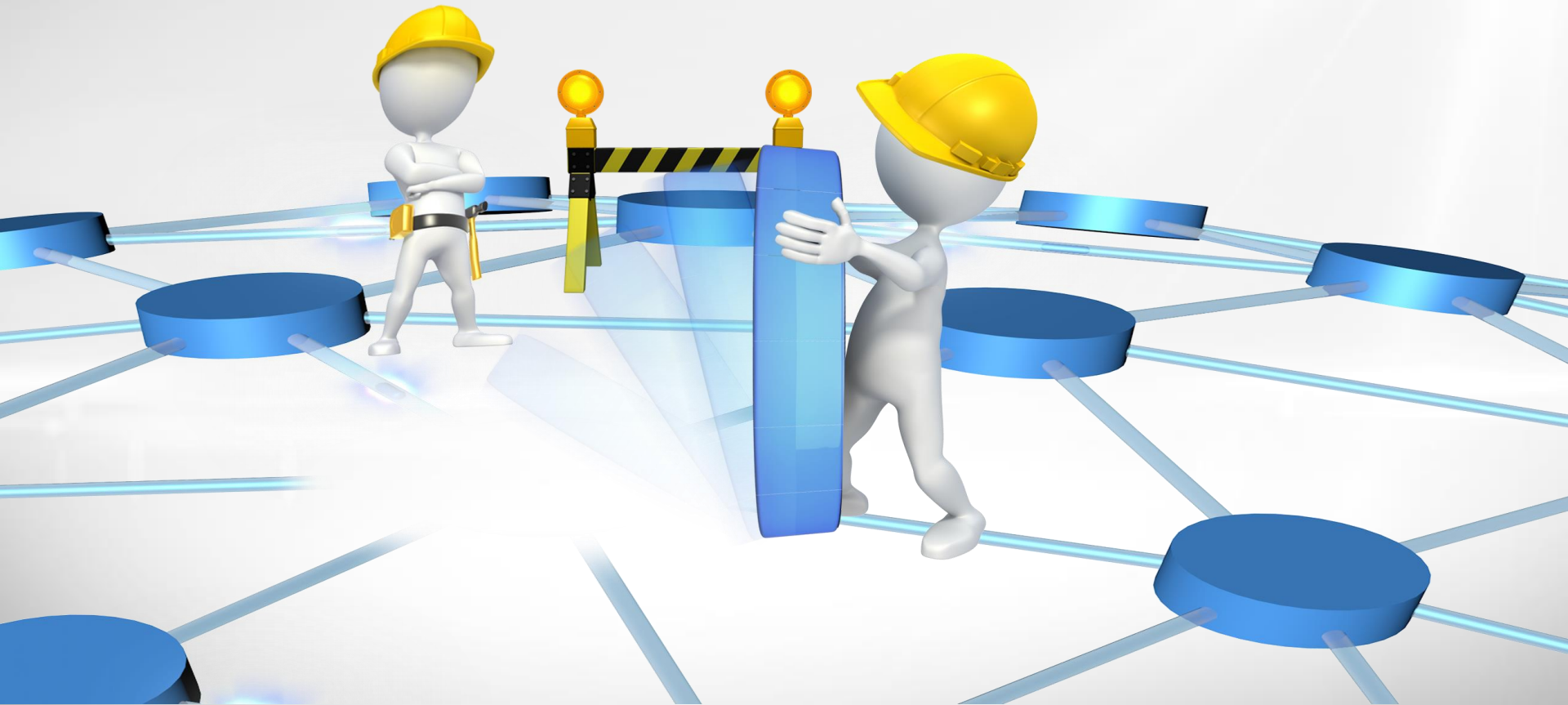
Integration and Transparency



Harvesting the Business Value of the Network



Time to Market for New Deployments



Influence the Long Term Expense Curve of the Network



The Approach and Path Forward....



Software Defined Networks: Unlocking The Real Potential Of The Network

