



Openbravo r2.11 quick-start PostgreSQL installation guide

10th August 2006

Revision 1.0.1



Visit us at www.openbravo.com



Table of Contents

I. Introduction.....	3
II. Requirements.....	4
III. License.....	5
IV. Operating Environment installation.....	6
I.1 PostgreSQL database installation.....	6
I.2 Sun Java 2 Software Development Kit installation.....	6
I.3 Apache Jakarta-Tomcat installation.....	7
I.4 Apache Ant installation.....	7
V. Openbravo installation.....	9
VI. Running Openbravo.....	15



I. Introduction

Openbravo is a pure web-based extended ERP for SMEs (Small and Midsize Enterprises). The extended ERP solution includes basic CRM (Customer Relationship Management) and BI (Business Intelligence) and a broad range of standard functionalities such as purchasing, warehousing, projects, manufacturing and sales management, financial management and much more. Openbravo is in production in companies spanning several industries, including distribution, services and manufacturing.



II. Requirements

Operating systems supported:

- ◆ Microsoft Windows XP, 2000 or 2003 server
- ◆ Linux. It has been successfully tested in Red Hat, CentOS and Fedora systems.

To run Openbravo, you need to install the following software:

- ◆ Jakarta-Tomcat version 5.5. It can be downloaded from <http://tomcat.apache.org/>
- ◆ Java 2 Platform Standard Edition 5.0. It can be downloaded from <http://java.sun.com/j2se/1.5.0/download.jsp>
- ◆ PostgreSQL Database Server 8.1.4. It can be downloaded from <http://www.postgresql.org/ftp/binary/v8.1.4/>
- ◆ Apache-ant 1.6.5. It can be downloaded from <http://ant.apache.org/>



III. License

The contents of this file are subject to the Openbravo Public License Version 1.0 (the "License"), being the Mozilla Public License version 1.1 with a permitted attribution clause; you may not use this file except in compliance with the License. You may obtain a copy of the License at <http://www.openbravo.com/legal/license.html>

Software distributed under the License is distributed on an "AS IS" basis, WITHOUT WARRANTY OF ANY KIND, either express or implied. See the License for the specific language governing rights and limitations under the License.

The Original Code is Openbravo ERP.

The Initial Developer of the Original Code is Openbravo SL

All portions are Copyright (C) 2001-2006 Openbravo SL

All Rights Reserved.



IV. Operating Environment installation

This section describes how to install step by step the base software (which we usually refer to as Operating Environment) needed to run Openbravo.

I.1 PostgreSQL database installation

Openbravo uses PostgreSQL as its database engine. Support for open source database engines such as MySQL is currently under development. To install PostgreSQL you need to:

- ◆ Download binary file from Postgre web site.
- ◆ Install it using the desired installation mode.
- ◆ Setup the bin directory in the PATH environment.

I.2 Sun Java 2 Software Development Kit installation

Openbravo requires Sun Java. In order to install it, you have to:

- ◆ Download and install Java 2 Platform Standard Edition 5.0 from <http://java.sun.com/j2se/1.5.0/download.jsp>. Selects *download JDK 5.0* and then selects the best choice from your platform. JDK is necessary because of you must compile java files.
- ◆ Make sure that the JAVA_HOME environment variable points correctly to your Java runtime and make sure that the Java runtime is in your search path. You can do that easily:
 - ◆ On Windows, go to the desktop, press the right-mouse button when you are over the *My Computer* icon and select the *Properties* option on the context menu. A property sheet is shown. Select the *Advanced* tab and then click the *Environment variables* button. Now, define the JAVA_HOME environment variable, pointing it to your Java install folder and add %JAVA_HOME%\bin to your *PATH* variable.
 - ◆ On Linux, check that you have a supported Java environment. Use *java -version* to check the version that you have installed. If your version is older than what is required, use your package distribution tool to upgrade the Java environment. Make sure that your JAVA_HOME environment variable is defined. You can add it to your system configuration by adding the following lines to the */etc/profile* configuration file:

```
JAVA_HOME="/usr/java/jdk1.5.0_06" (folder where  
it is installed).  
export JAVA_HOME
```

- ◆ Also, you can use the *ln* command to create a link to your Java runtime. Using *ln -s /usr/java/jsdk1.5.0_06/bin/java /usr/bin/java*, where



`/usr/java/jdk1.5.0_06/bin/java` is the folder where you have Java installed and `java /usr/bin/java` where the link is created.

I.3 Apache Jakarta-Tomcat installation

Openbravo requires Jakarta-Tomcat. In order to install it, you have to:

- ◆ Download Jakarta-Tomcat version 5.5 from <http://tomcat.apache.org/>
- ◆ Make sure that `CATALINA_HOME` and `CATALINA_OPTS` environment variable are correctly defined. You can do that easily:
 - ◆ On Windows, go to the desktop, press the right-mouse button when you are over the *My Computer* icon and select the *Properties* option on the context menu. A property sheet is shown. Select the *Advanced* tab and then click the *Environment variables* button. Now, define the `CATALINA_HOME` environment variable, pointing it to the folder where Jakarta-Tomcat was installed and for the `CATALINA_OPTS` environment variable, set to the value `"-server -Xms512M -Xmx512M"`.
 - ◆ On Linux, if these variables are not defined in your system, add the following lines to the `/etc/profile` configuration file:

```
CATALINA_HOME="/usr/local/tomcat"  
CATALINA_OPTS="-server -Xms512M -Xmx512M"  
export CATALINA_HOME CATALINA_OPTS
```

I.4 Apache Ant installation

Openbravo requires Apache Ant. In order to install it, you have to:

- ◆ Download the package from <http://ant.apache.org/> and install it.
- ◆ Make sure that the `ANT_HOME` environment variable is correctly defined. You can do that easily:
 - ◆ On Windows, go to the desktop, press the right-mouse button when you are over the *My Computer* icon and select the *Properties* option on the context menu. A property sheet is shown. Select the *Advanced* tab and then click the *Environment variables* button. Now, add the `ANT_HOME` variable, pointing it to the folder where Ant was installed and add `%ANT_HOME%\bin` to your `PATH` variable..
 - ◆ On Linux, you can add the `ANT_HOME` environment variable to your system configuration by adding the following lines to the `/etc/profile` configuration file:

```
ANT_HOME="/usr/local/apache-ant-1.6.5"  
export ANT_HOME
```

- ◆ Where `/usr/local/apache-ant-1.6.5` is the folder where you have your Ant



packed installed.

- ◆ Also you can use the *ln* command to create a link to your ant binaries using `ln -s /usr/local/apache-ant-1.6.5/bin/ant /usr/bin/ant`, where `/usr/local/apache-ant-1.6.5/bin/ant` is the folder where you have Ant installed and `ant /usr/bin/ant` where the link is created.



V. Openbravo installation

Openbravo is distributed in a compressed file that includes all the files needed to run it. You must unzip the file.

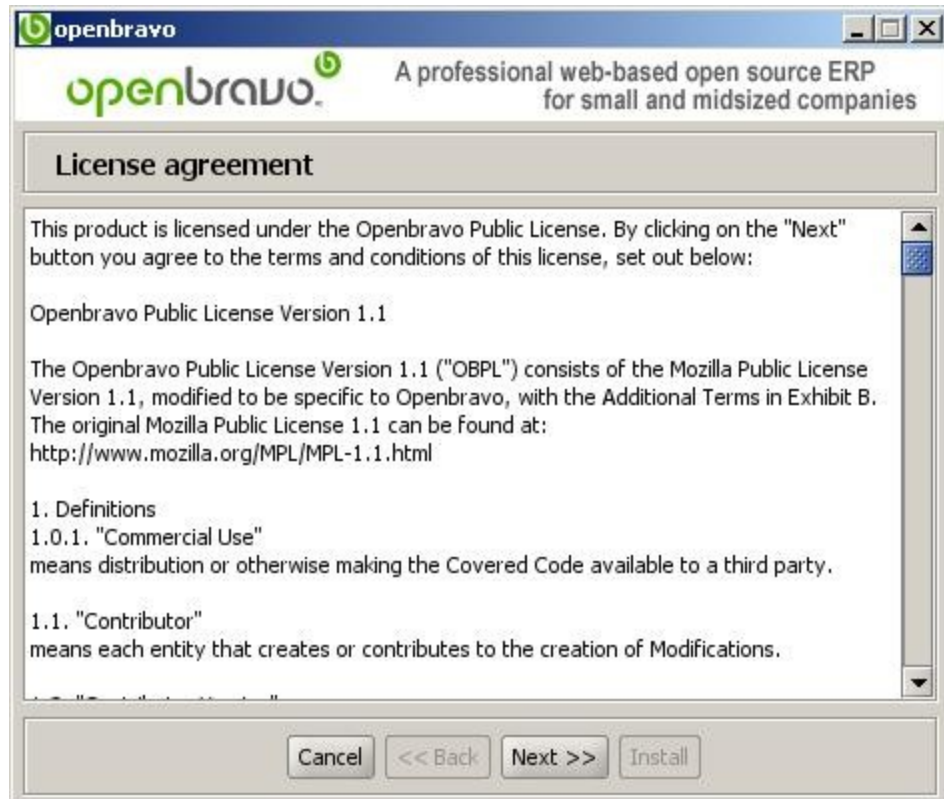
Before proceeding with the installation, there are a few third-party libraries that have to be copied into your system. Copy the following files (found in the *lib* folder of your Openbravo zip file) to the *CATALINA_HOME/common/lib* folder (that is Tomcat's lib directory):

- ◆ activation.jar
- ◆ avalon-framework-cvs-20020806.jar
- ◆ axis-ant.jar
- ◆ axis.jar
- ◆ batik.jar
- ◆ comm.jar
- ◆ fop.jar
- ◆ jaxrpc.jar
- ◆ log4j-1.3alpha-8.jar
- ◆ mail.jar
- ◆ nekohtml.jar
- ◆ postgresql-8.1-404.jdbc3.jar
- ◆ saaj.jar
- ◆ wsdl4j-1.5.1.jar
- ◆ renderFoRmi.jar
- ◆ commons-dbcj.jar
- ◆ commons-pool.jar
- ◆ commons-collections.jar
- ◆ commons-collections-testframework.jar
- ◆ commons-fileupload.jar
- ◆ commons-io.jar
- ◆ commons-logging-1.0.4.jar
- ◆ commons-discovery-0.2.jar
- ◆ xercesImpl.jar

Once you have copied the files you can start the installation process executing the *install.bat* file (Windows) or the *install.sh* file (Linux). The distribution file includes all source code developed by Openbravo and the installation process



automatically uses this to build the system.



In the license dialog box, read and accept the Openbravo license agreement before proceeding with the installation process. By clicking on the “Next” button you agree to the terms and conditions of this license.

The installation program will guide you through the installation steps. It will propose different default values for the installation options depending on the platform (Windows or Linux) you are using.

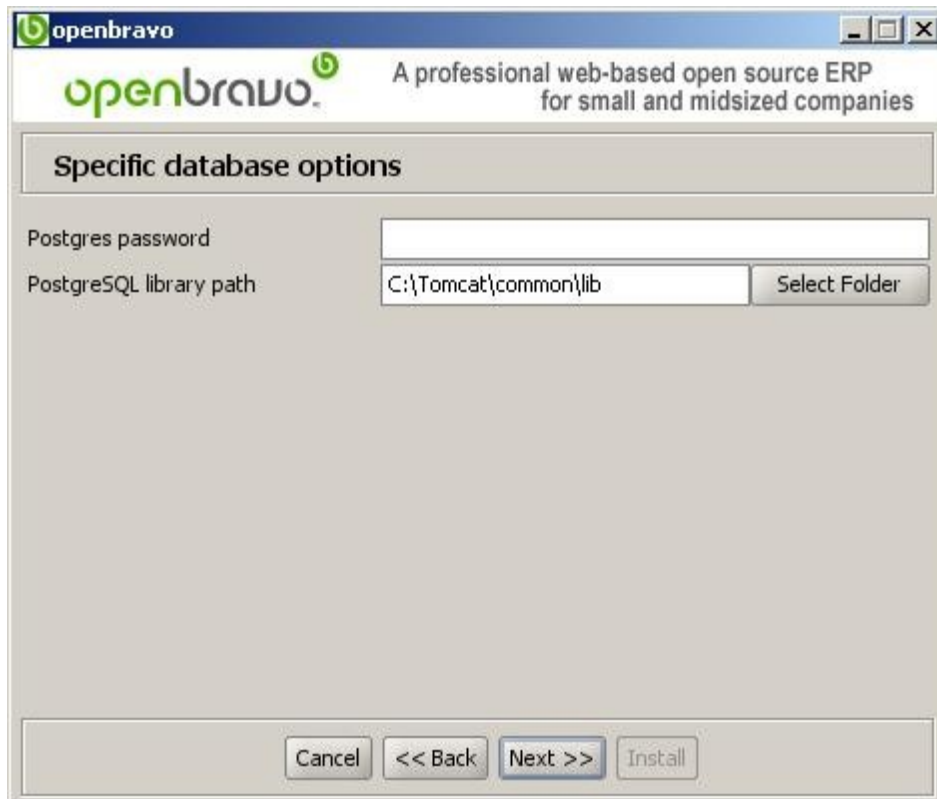


In this dialog box you can configure the following options:

- ◆ **Backup folder:** specifies the folder that the installation program uses to store backup copies in case of upgrading. This path cannot contain white spaces. It is recommended not to change the default value.
- ◆ **Database server:** name (recommended) or IP address of the database server. The installation program will check that you replace the default value (including “@” symbols) before you can continue the installation.
- ◆ **Database user:** PostgreSQL user name that will store the Openbravo dictionary. It is recommended not to change the default value. Remember that user name are always in lowercase.
- ◆ **Database user password:** password of the Database user in the PostgreSQL database. It is highly recommended to change the default value. The new password must not be null. Be aware that the password will be stored without encryption in XmlPool.xml and dbCon5.xml files in the config folder of your installation.
- ◆ **Database name:** PostgreSQL database name.
- ◆ **Port:** port number of the database connection. PostgreSQL installation defaults it to 5432.
- ◆ **Install options:** select which components you want to install: only the database (Database), the source code (Source) or both (Database and source). If you install the system in separate computers you will use first

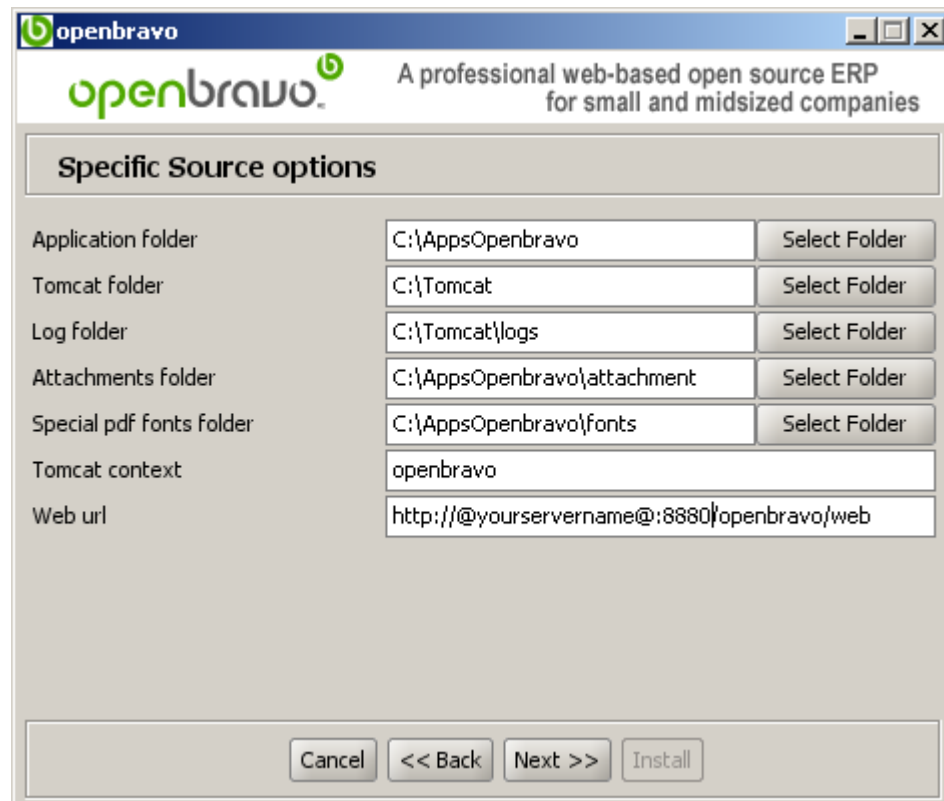


option for the computer running Jakarta-Tomcat and the second one for the database. If you install the whole system in one computer you will use the third option.



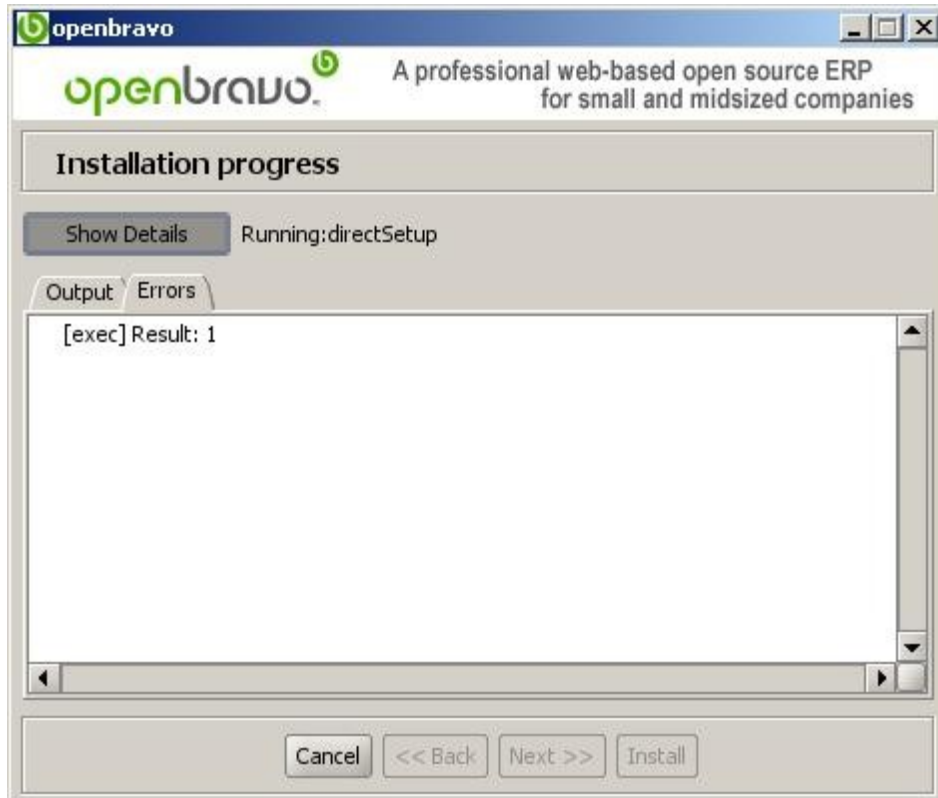
In this dialog box we can define the specific database options:

- ◆ **System password:** This is the password of the *System* user in oracle database. This is only required if you are doing a new installation. This user will be used for creating the Database user (usually TAD).
- ◆ **PostgreSQL library path:** PostgreSQL's default library folder. If you are installing the system in separate computers and you are in the database installation step you will need to change the default value.



In this dialog box we can define the folders that Openbravo uses:

- ◆ **Application folder:** where the application will be installed. It is recommended not to change the default value.
- ◆ **Tomcat folder:** where Tomcat is installed. If you have installed Jakarta-Tomcat using defaulted values you will not have to change the default value.
- ◆ **Log folder:** where the application logs will be stored. It is recommended not to change the default value.
- ◆ **Attachments folder:** to store application attachments. It is recommended not to change the default value.
- ◆ **Special pdf fonts folder:** where the FOP external sources files will be stored. It is recommended not to change the default value.
- ◆ **Tomcat context:** name of the tomcat context where you want to install the application. It is recommended not to change the default value.
- ◆ **Web url:** the URL that points where the static web content (images, css, Java Script) is stored. The installation program will check you replace the “@yourservername@” including the “@” symbols before you can continue the installation.



At the end we get the “Install” step. Once it has started, by clicking in the “Show Details” button we can see the detailed log of the installation process. In the “Errors” tab we see the log of errors happened during the installation. The message shown in the picture above ([exec] Result: 1) is usual and it has no importance: it is thrown by the PostgreSQL Import Process when it finish with warnings, as it usually does.

By now, the process try to drop de database name and user selected in the installation wizard so, you can get an error in the process when it try to drop each of them, just because you don't have one of them.

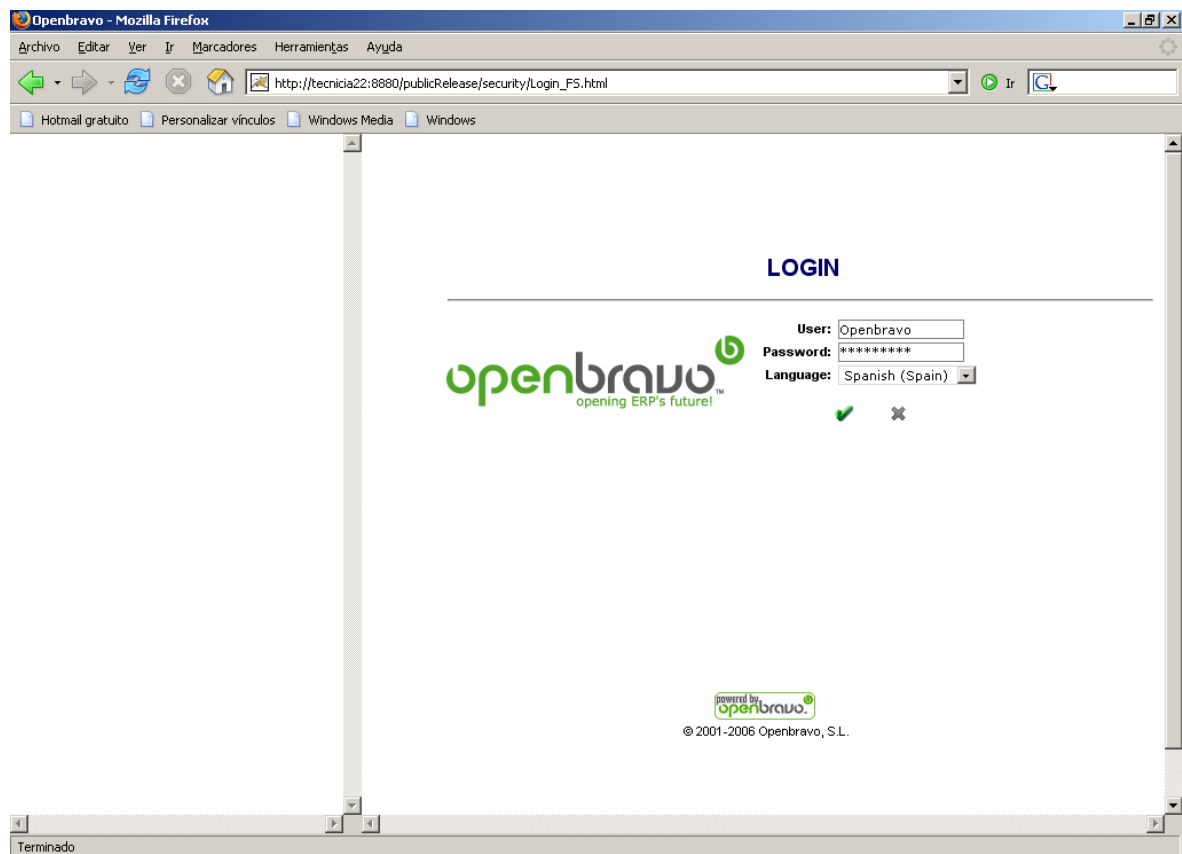


VI. Running Openbravo

After you have installed all of the software packages, point your browser to http://@yourservername@:8080/openbravo/security/Login_FS.html. To check that tomcat is up, point your browser to <http://@yourservername@:8080> (you should get the apache-tomcat welcome page). Otherwise, to start tomcat:

- ◆ On Windows, execute tomcat5w.exe (in \$CATALINA_HOME\bin) and select start option
- ◆ On Linux, execute ./startup.sh (in \$CATALINA_HOME/bin)

Replace “@yourservername@” by the name (recommended) or IP address of your computer to start using Openbravo.



You may now log into Openbravo with the username "Openbravo" and the password "openbravo". Please note that usernames and passwords are case sensitive.



© Openbravo S.L. 2006

This work is licensed under the Creative Commons Attribution-ShareAlike 2.5 Spain License. To view a copy of this license, visit <http://creativecommons.org/licenses/by-sa/2.5/es/> or send a letter to Creative Commons, 559 Nathan Abbott Way, Stanford, California 94305, USA.

As attribution to the original author, any redistribution of this work or any derivative work must maintain this copyright notice and, visibly on all its pages, the Openbravo logo.

The most updated copy of this work may be obtained at <http://www.openbravo.com/docs/>