

openCRX Installation Guide for MySQL 5

Version 2.0 / 2.1



www.opencrx.org

License

The contents of this file are subject to a BSD license (the "License"); you may not use this file except in compliance with the License. You may obtain a copy of the License at <http://www.opencrx.org/license.htm>

Copyright 2008 © CRIXP Corp. All rights reserved.



Table of Contents

1	About this Book.....	3
1.1	Who this book is for.....	3
1.2	What do you need to understand this book.....	3
1.3	Tips, Warnings, etc.....	3
2	Prerequisites.....	4
3	Upgrading from previous versions.....	5
3.1	The SQL Script upgrade-from-.....	5
3.2	The SQL Script migrate-from-.....	5
3.3	The SQL Script drop-from-.....	6
3.4	The SQL Script dbcreate-views.sql.....	6
3.5	The SQL Script dbcreate-indexes.sql.....	6
3.6	Populate Preferences.....	6
4	Create the database.....	7
5	Install the openCRX Database Schema Objects.....	10
6	Next Steps.....	12

List of Figures

Figure 1:	Create a new database.....	7
Figure 2:	Create schema crx-crx.....	7
Figure 3:	Add new user.....	8
Figure 4:	Grant privileges to user system.....	9
Figure 5:	Execute script dbcreate-tables.sql.....	10

List of Listings

Listing 1:	Setting in my.ini so that MySQL defaults to InnoDB	4
Listing 2:	Setting lower_case_table_names in my.ini.....	11

1 About this Book

This book describes how to setup an openCRX database instance for MySQL.

1.1 Who this book is for

The intended audience are openCRX database administrators.

1.2 What do you need to understand this book

This book describes the installation of openCRX for MySQL. The book assumes that you are familiar with MySQL installation and configuration.

1.3 Tips, Warnings, etc.

We make use the following pictograms:



Tip

Information provided as a “Tip” might be helpful for various reasons: time savings, risk reduction, etc.



Important

You should carefully read information marked with “Important”. Ignoring such information is typically not a good idea.



Warning

Warnings should not be ignored (risk of data loss, etc.)

2 Prerequisites

As a first step you must download the following software packages:

- Download **openCRX for MySQL** from <http://www.opencrx.org/downloads.htm> (e.g. *opencrx-1.9.0-core.mysql-5.zip*). The distribution contains MySQL scripts required to install the *openCRX* database.
- Download **MySQL Database Server** from <http://dev.mysql.com/downloads/mysql/5.0.html>.
- Download **MySQL Administrator** from <http://dev.mysql.com/downloads/administrator/1.1.html>.
- Download **MySQL Query Browser** from <http://dev.mysql.com/downloads/query-browser/1.1.html>
- Download the **JDBC driver MySQL Connector/J** from <http://dev.mysql.com/downloads/connector/j/5.0.html>



Please ensure that you install the **correct JDBC driver** (i.e. matching JDK, MySQL version, etc.) and **one JDBC driver** only! Ignoring this wisdom leads to problems as the connection to the database will fail.

As a next step you must install **MySQL**, **MySQL Administrator**, and **MySQL Query Browser** (please refer to the MySQL documentation for installation details).



Please ensure that your installation of MySQL creates tables of type **InnoDB**. By default, MySQL creates tables of type MyISAM. MyISAM tables are not appropriate for openCRX because the key length is limited to roughly 1000 bytes (~ characters with UTF-8 support).

Add the following line to the section `[mysqld]` in your file **my.ini** containing MySQL settings and MySQL will default to InnoDB:

Listing 1: Setting in my.ini so that MySQL defaults to InnoDB

```
[mysqld]
# The default storage engine that will be used when create new tables when
default-storage-engine=INNODB
```

This document assumes that you use the **MySQL Administrator** for database administration. The JDBC driver is required for the application server installation.

3 Upgrading from previous versions

If you already have MySQL for openCRX installed, upgrade the database as explained below. You can then skip the rest of this document.



Do not forget to backup your database **before** you run any upgrade or migrate scripts!



Please consult <http://www.opencrx.org/faq.htm#upgrade> and find out whether there exist specific instructions for your openCRX version. Instructions below are generic and might not cover all steps required to successfully upgrade your openCRX version.



Please note that the behavior of MySQL is not very consistent if it comes to the spelling/naming of tables. Regardless of the CREATE TABLE statement table names are always created with small letters (e.g. `CREATE TABLE prefs_Preference(...)`; creates a table named *prefs_preference* as opposed to *prefs_Preference*); if you try to DROP or DELETE the table *prefs_Preference*, however, the table name is case-sensitive; as a consequence, the DROP or DELETE statement will fail ⇒ you might have to adapt the capitalization of some of the table names with MySQL.

This peculiarity also strikes with VIEW names, by the way.

3.1 The SQL Script upgrade-from-...

In a first step you must upgrade your database. openCRX distributions provide an SQL script of the form

upgrade-from-<version from>-to-<version to>.sql

If you have installed openCRX 1.8.1, for example, and you want to upgrade to version 1.9.0 you have to run the script `upgrade-from-1.8.1-to-1.9.0.sql` on your database instance.

3.2 The SQL Script migrate-from-...

In a second step you must migrate your database. openCRX distributions often times provide an SQL script of the form

migrate-from-<version from>-to-<version to>.sql

If you have installed openCRX 1.8.1, for example, and you want to upgrade to version 1.9.0 you have to run the script `upgrade-from-1.8.1-to-1.9.0.sql` on your database instance.

3.3 The SQL Script drop-from-...

Next you can drop unused tables from your database. openCRX distributions often times provide an SQL script of the form

drop-from-<version from>-to-<version to>.sql

If you have installed openCRX 1.8.1, for example, and you want to drop tables not used by openCRX 1.9.0 you can run the script `drop-from-1.8.1-to-1.9.0.sql` on your database instance. Alternatively, you can also rename such tables, e.g. from `transition_type` to `_unused_transition_type`. Also, it goes without saying that you should never drop a table before you made a backup!

3.4 The SQL Script dbcreate-views.sql

Most new openCRX versions make use of new/changed views, i.e. if an openCRX distribution includes an SQL script of the form

dbcreate-views.sql

then you should run that script. If you have installed openCRX 1.8.1, for example, and you want to upgrade to openCRX 1.9.0 you should run the script `dbcreate-views.sql` on your database instance. Make sure that old views are indeed dropped and new views properly created.

3.5 The SQL Script dbcreate-indexes.sql

Most new openCRX versions make use of new/changed indexes, i.e. if an openCRX distribution includes an SQL script of the form

dbcreate-indexes.sql

then you should run that script. If you have installed openCRX 1.8.1, for example, and you want to upgrade to openCRX 1.9.0 you should run the script `dbcreate-indexes.sql` on your database instance.

3.6 Populate Preferences

The last step involves deleting old preferences and populating the table with new ones. Run the SQL script **populate-preferences.sql** to do this.



Make sure that old preferences are indeed removed. MySQL typically creates tables with small letters only (e.g. `prefs_preference` instead of `prefs_Preference`) which can cause the DELETE command to fail.

4 Create the database

As a first step you must create the database. This can be done with MySQL Administrator. Start MySQL Administrator. Select **Catalogs** and then **Create New Schema** from the pop-up menu as shown below:

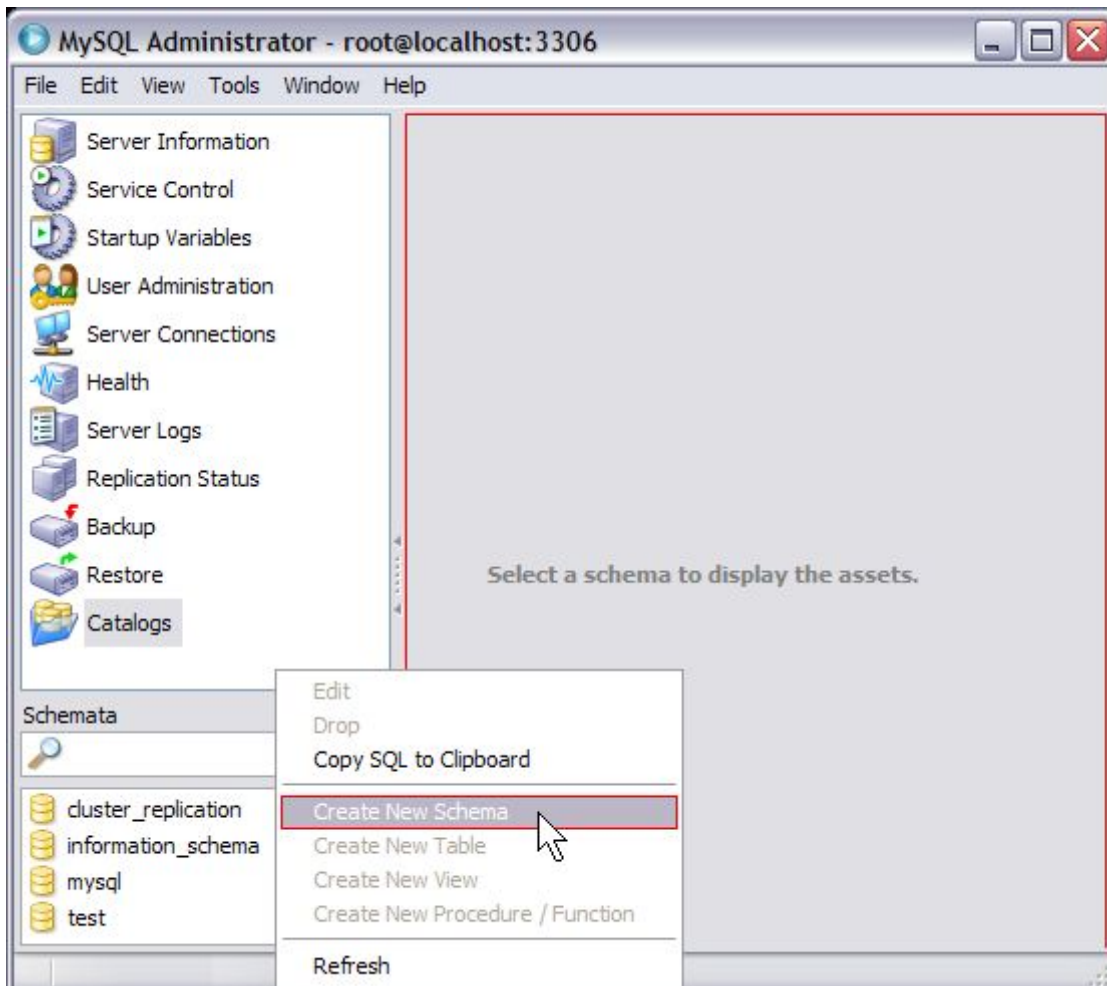


Figure 1: Create a new database

Enter **crx-crx** as database name (please note that MySQL on Windows ignores capitalization, whereas MySQL on Linux is case-sensitive) and then click OK:

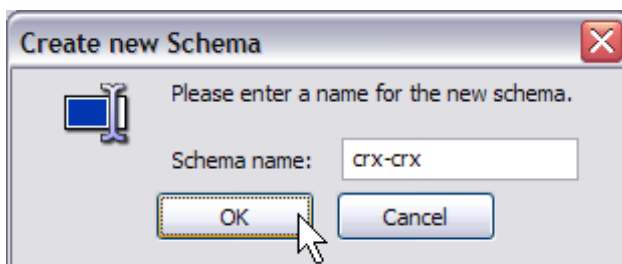


Figure 2: Create schema crx-crx

Next you must create a database user and grant this user access to the newly created database. Select **User Administration** and then **Add new User** from the pop-up menu as shown below:

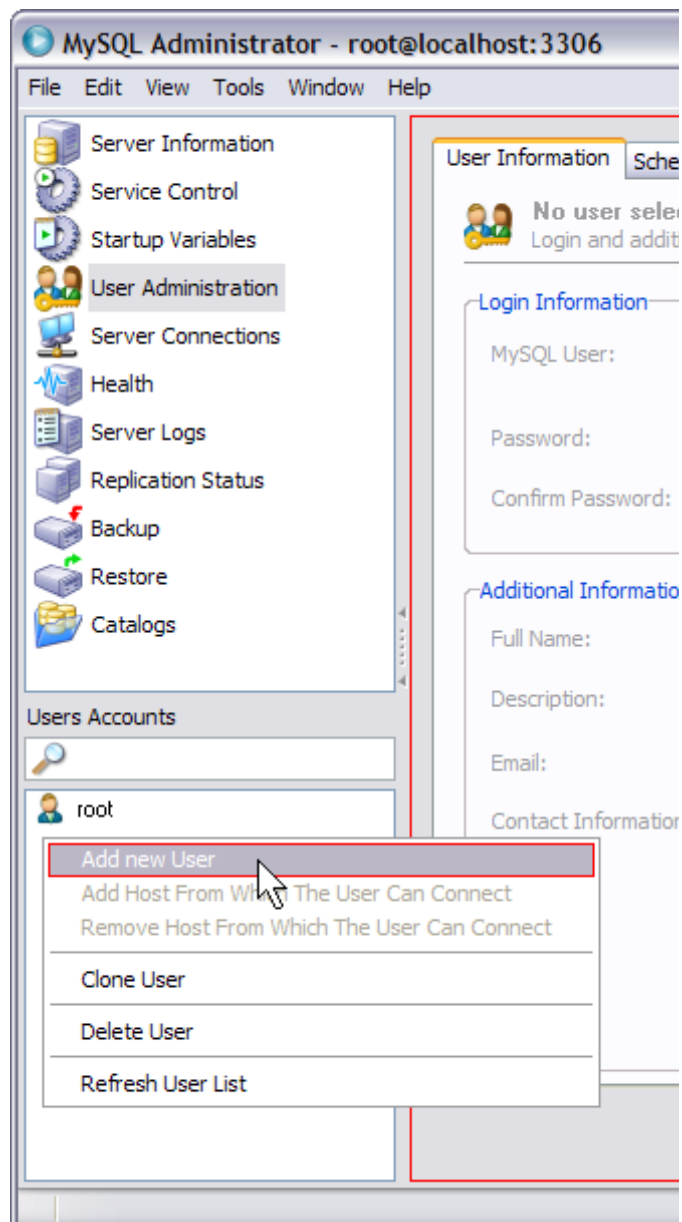


Figure 3: Add new user

Complete the Login Information and Additional information. We assume that you create the user **system** and set the password to **manager**.

Next you must grant the user **system** access to the database **crx-crx**. Select the tab **Schema Privileges** and then select the schema **crx-crx**. Move all privileges from the pane **Available Privileges** to the pane **Assigned Privileges** and click the button **Apply changes** as shown below:

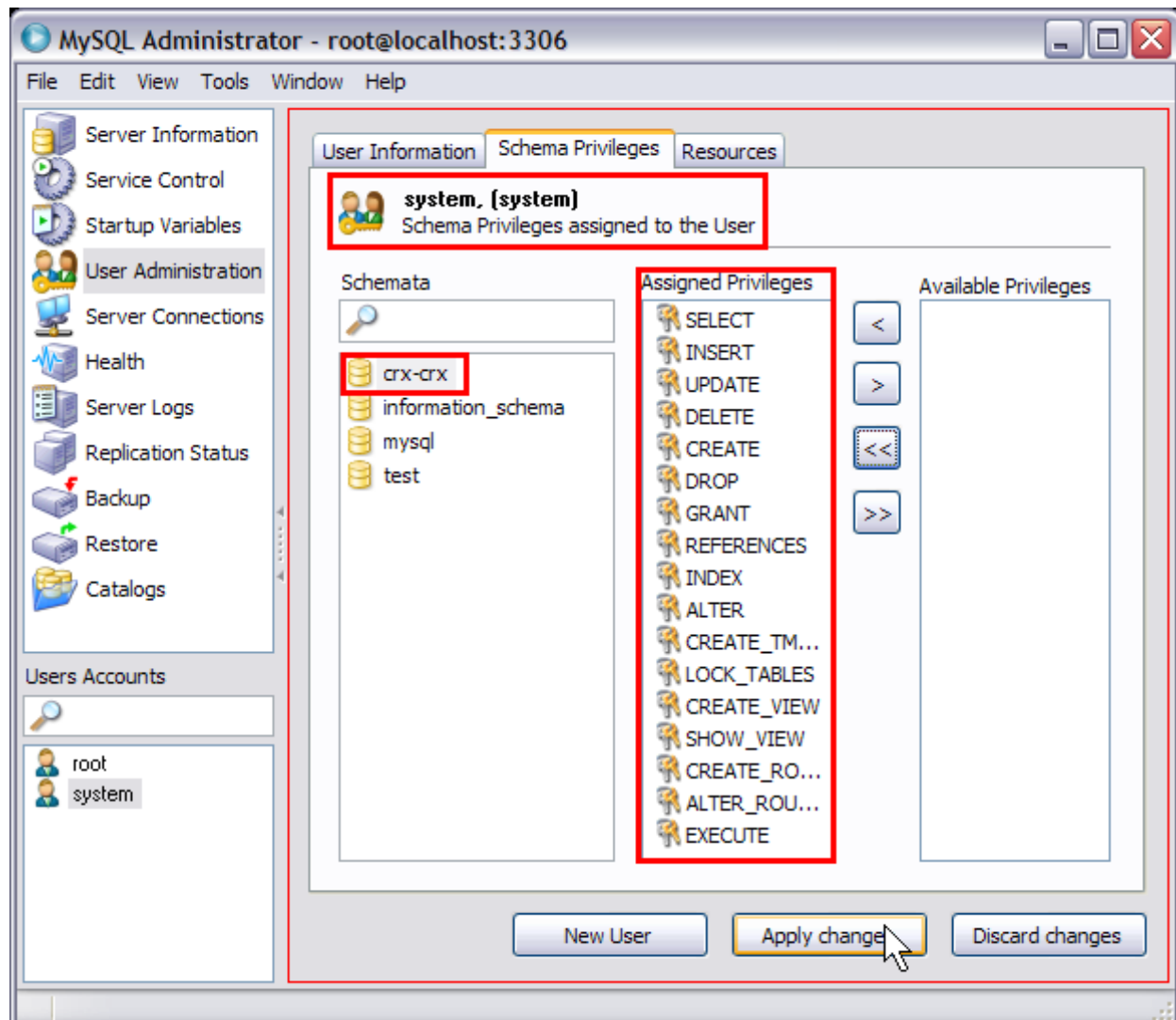


Figure 4: Grant privileges to user system

You have completed creating the database **crx-crx**.

5 Install the openCRX Database Schema Objects

After creating the schema you are now ready to install the openCRX database schema objects. The following scripts must be executed:

- dbcreate-tables.sql
- dbcreate-views.sql
- dbcreate-indexes.sql
- populate-preferences.sql



Do not execute any other scripts included in the distribution.

Start the **MySQL Query Browser**. Select the schema **crx-crx**, then create a new script tab with File > New Script Tab. Copy/paste the database script **dbcreate-tables.sql** and execute by clicking on the button Execute:

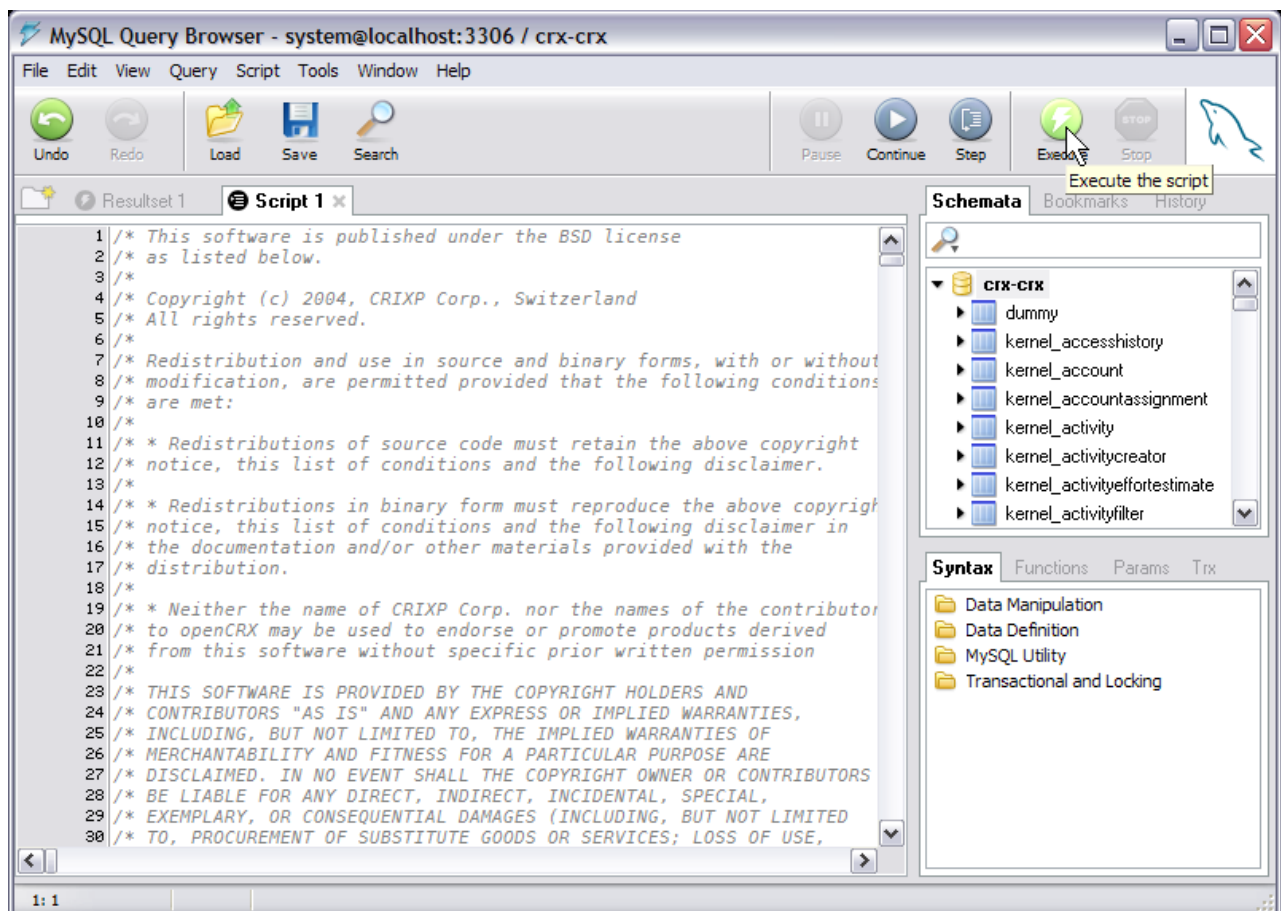


Figure 5: Execute script dbcreate-tables.sql



Please note that you will get a lot of errors running the above script if MySQL creates new tables of the type MyISAM. You must ensure that your installation of MySQL creates tables of type **InnoDB**. MyISAM tables are not appropriate for openCRX because the key length is limited to roughly 1000 bytes (~ characters with UTF-8 support).

See Listing 1 for more information on how to configure MySQL.



If you want/need **UTF-8** support you should verify that tables and columns of type varchar were indeed created with the options

character set **utf8** collate **utf8_bin**

Some versions/configurations of MySQL have a tendency to pick latin_1 or some other default character set instead of utf8 – if your installation suffers from such troubles try to fix it now before you have a lot of data in your tables!



The case sensitivity of the underlying operating system plays a part in the case sensitivity of database and table names. This means database and table names are **not case sensitive in Windows**, and **case sensitive in most varieties of Unix**. See

<http://dev.mysql.com/doc/refman/5.0/en/identifier-case-sensitivity.html>

for details. Add the following line to the section `[mysqld]` in your file **my.ini** containing MySQL settings:

Listing 2: Setting lower_case_table_names in my.ini

```
[mysqld]
lower_case_table_names=1
```

Similarly, execute the remaining scripts in the following order:

- **dbcreate-views.sql** (hint: you can ignore error messages of the following sort: `Unknown table 'crx-crx.kernel_view_xxx'`).
- **dbcreate-indexes.sql** (hint: you can ignore error messages of the following sort: `Duplicate key name 'xxx' Error 1061`).
- **populate-preferences.sql**

The scripts should run without errors and after execution the pane `Schemata` should list all created tables as shown in Figure 5. Alternatively, you can use MySQL Administrator to verify that all the tables, views, and indexes were created properly.

6 Next Steps

If you have completed successfully the database installation you are ready to use the openCRX database **crx-crx**. The application server installation guides explain how to connect the application server to the openCRX database instance.