



Red Hat Enterprise Linux 7 Desktop Migration and Administration Guide

A guide to the GNOME 3 Desktop migration planning and administration on Red Hat Enterprise Linux 7.

Petr Kovář

Jana Heves

Red Hat Enterprise Linux 7 Desktop Migration and Administration Guide

A guide to the GNOME 3 Desktop migration planning and administration on Red Hat Enterprise Linux 7.

Petr Kovář
Red Hat Customer Content Services
pkovar@redhat.com

Jana Heves
Red Hat Customer Content Services
jheves@redhat.com

Legal Notice

Copyright © 2015 Red Hat, Inc.

This document is licensed by Red Hat under the [Creative Commons Attribution-ShareAlike 3.0 Unported License](#). If you distribute this document, or a modified version of it, you must provide attribution to Red Hat, Inc. and provide a link to the original. If the document is modified, all Red Hat trademarks must be removed.

Red Hat, as the licensor of this document, waives the right to enforce, and agrees not to assert, Section 4d of CC-BY-SA to the fullest extent permitted by applicable law.

Red Hat, Red Hat Enterprise Linux, the Shadowman logo, JBoss, MetaMatrix, Fedora, the Infinity Logo, and RHCE are trademarks of Red Hat, Inc., registered in the United States and other countries.

Linux® is the registered trademark of Linus Torvalds in the United States and other countries.

Java® is a registered trademark of Oracle and/or its affiliates.

XFS® is a trademark of Silicon Graphics International Corp. or its subsidiaries in the United States and/or other countries.

MySQL® is a registered trademark of MySQL AB in the United States, the European Union and other countries.

Node.js® is an official trademark of Joyent. Red Hat Software Collections is not formally related to or endorsed by the official Joyent Node.js open source or commercial project.

The OpenStack® Word Mark and OpenStack Logo are either registered trademarks/service marks or trademarks/service marks of the OpenStack Foundation, in the United States and other countries and are used with the OpenStack Foundation's permission. We are not affiliated with, endorsed or sponsored by the OpenStack Foundation, or the OpenStack community.

All other trademarks are the property of their respective owners.

Abstract

The Desktop Migration and Administration Guide documents the GNOME 3 Desktop migration planning, deployment, configuration, and administration on Red Hat Enterprise Linux 7. It is oriented towards system administrators with a basic understanding of the Red Hat Enterprise Linux system.

Table of Contents

Chapter 1. Introducing the GNOME 3 Desktop	3
1.1. What Is GNOME 3?	3
1.2. What Is GNOME Shell?	4
1.3. What Is GNOME Classic?	5
Part I. Migration Planning	9
Chapter 2. logind	10
Getting More Information	11
Chapter 3. GSettings and dconf	12
Getting More Information	12
Chapter 4. PolicyKit	13
4.1. Policy Configuration	13
4.2. Default Policy	13
4.3. Checking Permissions from Scripts	14
4.4. Extending polkit Configuration	14
Chapter 5. GDM	15
Getting More Information	15
Chapter 6. GNOME Shell Extensions	16
6.1. Replacement for the Clock Applet	16
Chapter 7. gnome-session	17
Getting More Information	17
Chapter 8. Internationalization	18
8.1. Input Methods	18
8.2. Changed File Locations	18
Part II. Configuration and Administration	19
Chapter 9. Configuring Desktop with GSettings and dconf	20
9.1. Terminology Explained: GSettings, gsettings, and dconf	20
9.2. User and System Settings	20
9.3. Browsing GSettings Values for Desktop Applications	20
9.4. What Are dconf Profiles?	21
9.5. Configuring Custom Default Values	22
9.6. GSettings Keys Properties	24
9.7. Storing User Settings Over NFS	25
Chapter 10. Default Appearance	26
10.1. Branding Anaconda	26
10.2. Boot Loader Screen	26
10.3. Plymouth	28
10.4. Customizing the Login Screen	30
10.5. Customizing Desktop Backgrounds	33
10.6. Configuring Fonts	36
Chapter 11. GNOME Shell Extensions	42
11.1. What Are GNOME Shell Extensions?	42
11.2. Enabling Machine-wide Extensions	43
11.3. Locking Down Enabled Extensions	44

11.4. Setting Up Mandatory Extensions	44
Chapter 12. Integrating Applications	46
12.1. Customizing Menus	46
12.2. Customizing Default Favorite Applications	50
12.3. Configuring File Associations	51
Chapter 13. Customizing GNOME Desktop Features	58
13.1. Allowing and Disallowing Online Accounts	58
13.2. Enabling the Ctrl+Alt+Backspace Shortcut	59
13.3. Enabling the Compose Key	60
13.4. Disabling Command Line Access	61
13.5. Locking Down Printing	62
13.6. Locking File Saving on Disk	63
13.7. Locking Repartitioning	63
Chapter 14. Session Management	65
14.1. What Is GDM?	65
14.2. Authentication	65
14.3. User Sessions	67
Chapter 15. Virtual File Systems and Disk Management	75
15.1. GVFS	75
15.2. Back Ends for GVFS	75
15.3. Mounting, Unmounting and Ejecting	76
15.4. Managing Bookmarks	77
15.5. Configuring a Default Server List	78
15.6. Exposing GNOME Virtual File Systems to All Other Applications	78
15.7. Password Management of GVFS Mounts	79
15.8. GVFS Tools and xdg-utils in GNOME	79
15.9. Using GVFS Metadata	81
15.10. Troubleshooting	81
Chapter 16. Hardware Configuration	84
16.1. Tablets	84
Appendix A. Accessing Red Hat Documentation	86
Appendix B. Acknowledgements	87
Appendix C. Revision History	88

Chapter 1. Introducing the GNOME 3 Desktop

1.1. What Is GNOME 3?

In Red Hat Enterprise Linux 7, GNOME 3 is the default desktop environment. It is the next major version of the GNOME Desktop that introduces a new user interface and substantial feature improvements over the previous GNOME 2 Desktop shipped with Red Hat Enterprise Linux 5 and 6.

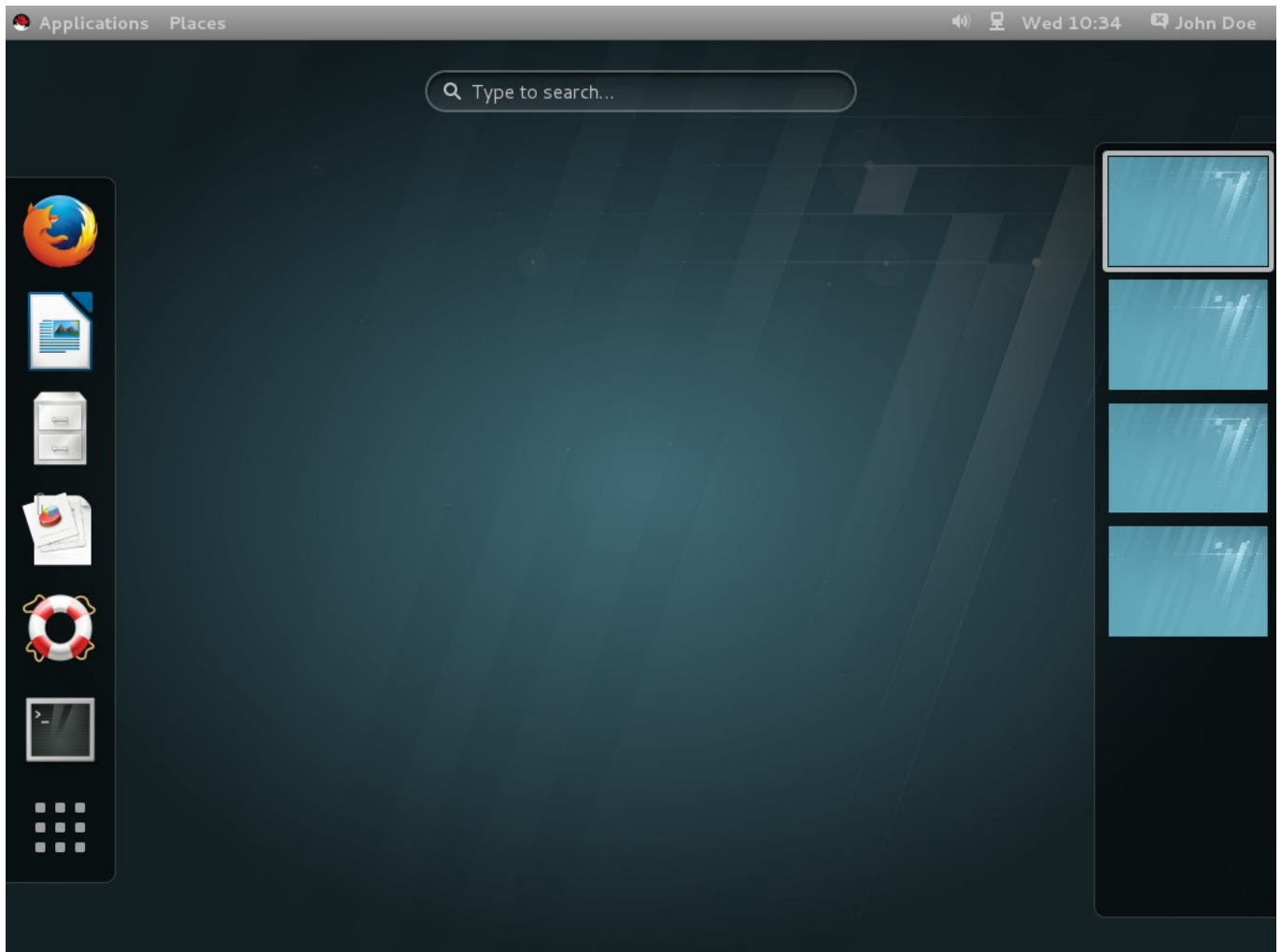


Figure 1.1. The GNOME 3 Desktop (GNOME Classic)

GNOME 3 provides a focused working environment that encourages productivity. A powerful search feature lets you access all your work from one place. For example, you can turn off notifications when you need to concentrate on the task in hand. GNOME 3 is built on a number of powerful components:

GNOME Shell

GNOME Shell is a modern and intuitive graphical user interface. It provides quality user experience, including visual effects and hardware acceleration support. For more information, see [Section 1.2, "What Is GNOME Shell?"](#).

GNOME Classic

GNOME Classic combines old and new; it keeps the familiar look and feel of GNOME 2, but adds the powerful new features and 3-D capabilities of GNOME Shell. GNOME Classic is the default GNOME session and GNOME Shell mode in Red Hat Enterprise Linux 7. For

more information, read the section [Section 1.3, “What Is GNOME Classic?”](#).

GSettings

GSettings is a configuration storage system, replacing **GConf** found in older GNOME versions. For more information about the transition from **GConf** to **GSettings**, see [Chapter 3, *GSettings and dconf*](#). To learn more about configuring your desktop with **GSettings**, read [Chapter 9, *Configuring Desktop with GSettings and dconf*](#).

GVFS

GVFS provides complete virtual file system infrastructure and handles storage in the GNOME Desktop in general. Through **GVFS**, GNOME 3 integrates well with online document-storage services, calendars, and contact lists, so all your data can be accessed from the same place. Read more about **GVFS** in [Chapter 15, *Virtual File Systems and Disk Management*](#).

GTK+

GTK+, a multi-platform toolkit for creating graphical user interfaces, provides a highly-usable feature-rich API. Thanks to **GTK+**, GNOME 3 is able to change the look of an application or provide smooth appearance of graphics. In addition, **GTK+** contains a number of features such as object-oriented programming support (GObject), wide support of international character sets and text layouts (Pango), or a set of accessibility interfaces (ATK).



Note

As an alternative to the default **GNOME** desktop environment, Red Hat Enterprise Linux 7 supports the version 4 of the KDE Desktop Environment (**KDE**) to match different work styles and preferences.

Refer to the *Red Hat Enterprise Linux 7 Installation Guide* on setting **KDE** as the default desktop during the installation process or changing your current desktop environment to **KDE**. For more information on **KDE**, see its upstream projects, such as <https://www.kde.org/> and <https://docs.kde.org/>

1.2. What Is GNOME Shell?

GNOME Shell is the user interface of the GNOME Desktop, the crucial technology of GNOME 3. It provides basic user interface functions such as switching windows, launching applications, or displaying notifications.

GNOME Shell introduces innovative user interface concepts to provide quality user experience, including hardware acceleration on systems with modern graphics hardware.

Some of the major components of the GNOME Shell user interface include:

The top bar.

The horizontal bar at the top of the screen provides access to some of the basic functions of GNOME Shell, such as the **Activities Overview**, clock and calendar, system status icons, and the system menu at the top-left corner of the screen.

The Activities Overview.

The **Activities Overview** features windows and applications views that let the user run applications and windows and switch between them.

The **search entry** at the top allows for searching various items available on the desktop, including applications, documents, files, and configuration tools.

The vertical bar on the left side is called **dash**, and it contains a list of favorite and running applications.

The **workspace list** is displayed on the right side, and allows the user to switch between multiple workspaces, or move applications and windows from one workspace to another.

The message tray.

The **message tray** is a horizontal bar near the bottom of the screen, and shows when the user presses **Super+M**. It provides access to pending notifications.

Components specific to GNOME Classic.

GNOME Classic is the default GNOME Shell mode in Red Hat Enterprise Linux 7. It changes some of the aspects of GNOME Shell behavior as well as the GNOME Shell appearance. That includes the bottom bar with the window list, and the **Applications** and **Places** menus on the top bar. For detailed information on GNOME Classic, see [Section 1.3, “What Is GNOME Classic?”](#).

1.2.1. Hardware Acceleration and Software Rendering

GNOME Shell features visual effects and makes use of hardware acceleration support provided by **Clutter**, an OpenGL-based graphics library.

For hardware acceleration to function properly, the graphics driver has to support GL 1.2 and the multi-texturing extension, or GL 1.3. Alternatively, the driver has to provide support for GLES 1.1 or GLES 2.0. Keep in mind that many GPU models and drivers do not properly implement support for GL or GLES, so hardware acceleration on systems with those GPUs and drivers may not be available.

On systems, including virtual machines, that do not meet the GPU and driver requirements, software rendering is used to provide the GNOME 3 user experience identical to that with supported hardware acceleration. Software rendering is provided by the **llvmpipe** driver.

To determine whether the system is using software rendering and the **llvmpipe** driver, you can run the **glxinfo** command:

```
$ glxinfo | grep renderer
OpenGL renderer string: Gallium 0.4 on llvmpipe (LVVM 3.3, 128 bits)
```

Note that because the software renderer does not provide a fully compliant OpenGL implementation, some programs may not function properly if they rely on the X server having a consistent view of GLX state across applications. Consider upgrading your hardware, or run these programs on systems with GPUs and drivers that fully support hardware acceleration.

1.3. What Is GNOME Classic?

GNOME Classic is a GNOME Shell feature and mode for users who prefer a more traditional desktop experience. While GNOME Classic is based on GNOME 3 technologies, it provides a number of changes to the user interface:

The Applications and Places menus.

The **Applications** menu is displayed at the top left of the screen. It gives the user access to applications organized into categories. The user can also open the **Activities Overview** from that menu.

The **Places** menu is displayed next to the **Applications** menu on the *top bar*. It gives the user quick access to important folders, for example **Downloads** or **Pictures**.

The taskbar.

The taskbar is displayed at the bottom of the screen, and features:

- ✦ a window list,
- ✦ a notification icon displayed next to the window list,
- ✦ a short identifier for the current workspace and total number of available workspaces displayed next to the notification icon.

Four available workspaces.

In GNOME Classic, the number of workspaces available to the user is by default set to 4.

Minimize and maximize buttons.

Window titlebars in GNOME Classic feature the minimize and maximize buttons that let the user quickly minimize the windows to the window list, or maximize them to take up all of the space on the desktop.

A traditional Super+Tab window switcher.

In GNOME Classic, windows in the **Super+Tab** window switcher are not grouped by application.

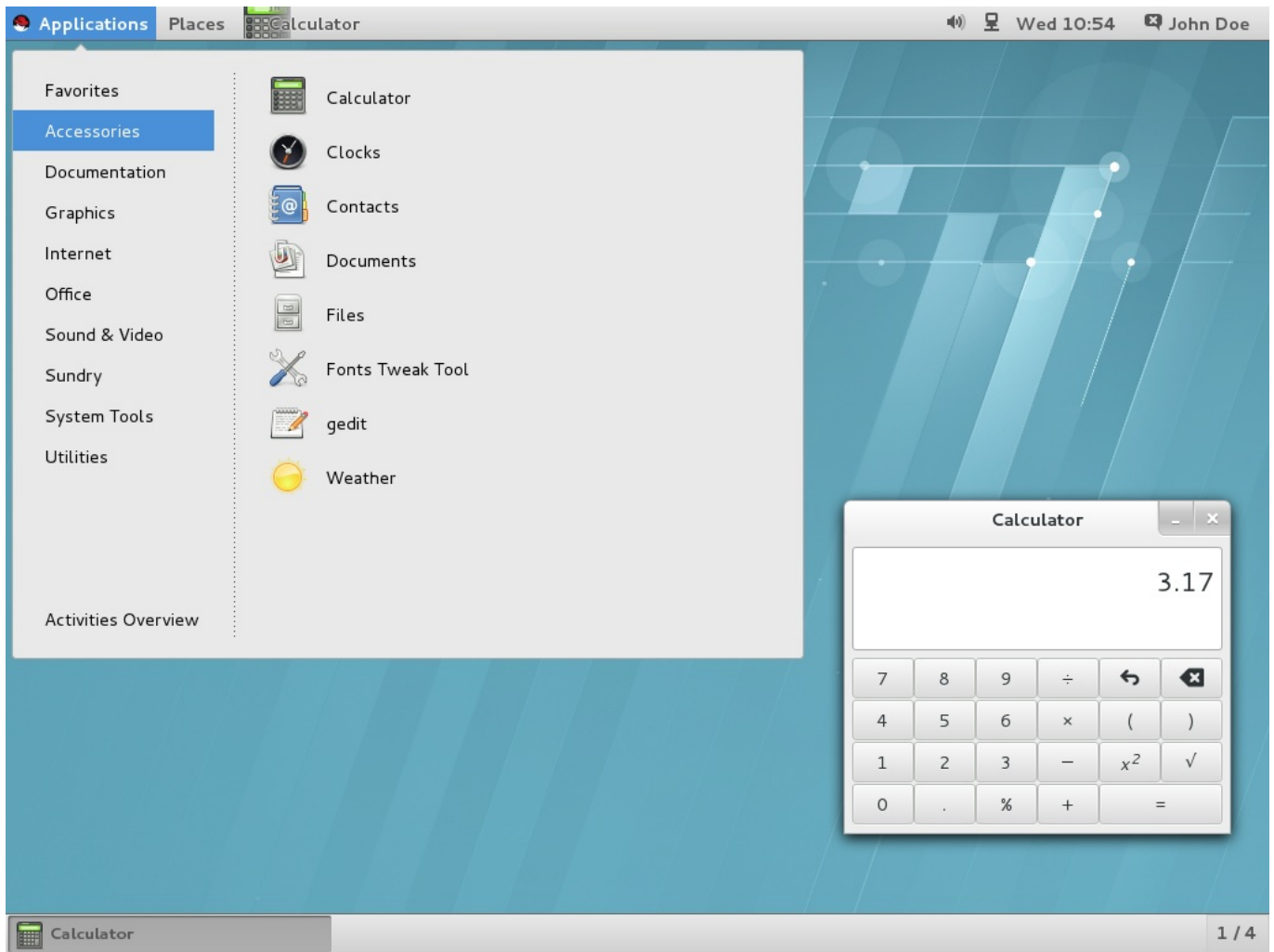


Figure 1.2. GNOME Classic with the Calculator application and the Accessories submenu of the Applications menu

1.3.1. The GNOME Classic Extensions

GNOME Classic is distributed as a set of [GNOME Shell extensions](#). The GNOME Classic extensions are installed as dependencies of the *gnome-classic-session* package, which provides components required to run a GNOME Classic session. Because the GNOME Classic extensions are enabled by default on Red Hat Enterprise Linux 7, GNOME Classic is the default Red Hat Enterprise Linux 7 desktop user interface.

- ✦ AlternateTab (alternate-tab@gnome-shell-extensions.gcampax.github.com),
- ✦ Applications Menu (apps-menu@gnome-shell-extensions.gcampax.github.com),
- ✦ Launch new instance (launch-new-instance@gnome-shell-extensions.gcampax.github.com),
- ✦ Places Status Indicator (places-menu@gnome-shell-extensions.gcampax.github.com),
- ✦ Window List ([window-list@gnome-shell-extensions.gcampax.github.com](mailto>window-list@gnome-shell-extensions.gcampax.github.com)).

1.3.2. Switching from GNOME Classic to GNOME and Back

The user can switch from GNOME Classic to GNOME by logging out and selecting GNOME from the **Session** list on the login screen.

To switch from GNOME Classic to GNOME from within the user session, run the following command:

```
$ gnome-shell --mode=user -r &
```

To switch back to GNOME Classic from within the same user session, run the following command:

```
$ gnome-shell --mode=classic -r &
```

1.3.3. Disabling GNOME Classic as the Default Session

For all newly created users on Red Hat Enterprise Linux 7, GNOME Classic is set as the default session. To override that setting for a specific user, you need to modify the user's account service in the `/var/lib/AccountsService/users/username` file. See [Section 14.3.2, “Configuring a User Default Session”](#) for details on how to do that.

Getting More Information

Users can find more information on using GNOME 3, GNOME Shell, or GNOME Classic in GNOME Help, which is provided by the `gnome-user-docs` package. To access GNOME Help, press the **Super** key to enter the **Activities Overview**, type **help**, and then press **Enter**.

Part I. Migration Planning

Migration Planning focuses on the shift of the default Red Hat Enterprise Linux desktop environment from GNOME 2, shipped with Red Hat Enterprise Linux 5 and 6, to GNOME 3. One by one, this part of the guide briefly mentions the changes certain components have gone through and describes the new features the components possess.

This guide only refers to changes to the GNOME Desktop environment. For changes to the other parts of Red Hat Enterprise Linux 7 refer to:

- ✦ *Red Hat Enterprise Linux 7 System Administrator's Guide*, for components such as the **GRUB 2** boot loader, package management, **systemd**, or printer configuration.
- ✦ *Red Hat Enterprise Linux 7 Migration Planning Guide* for an overview of major changes in behavior and compatibility between Red Hat Enterprise Linux 6 and Red Hat Enterprise Linux 7. The Migration Planning Guide also introduces the tools provided by Red Hat to assist with upgrades to Red Hat Enterprise Linux 7.
- ✦ *Red Hat Enterprise Linux 7 Installation Guide* for detailed information about installing Red Hat Enterprise Linux 7 and using the **Anaconda** installer.

These documents can be found at

http://access.redhat.com/site/documentation/Red_Hat_Enterprise_Linux/.

Chapter 2. logind

logind (or more specifically **systemd-logind**) is a system service that manages user logins. This service is responsible for the following:

- ✦ keeping track of users and sessions, their processes and their idle states,
- ✦ creating control groups for user processes,
- ✦ providing PolicyKit-based access for users to operations such as system shutdown or sleep,
- ✦ implementing a shutdown/sleep inhibition logic for applications,
- ✦ handling of power/sleep hardware keys,
- ✦ multi-seat management, session switch management, and device access management for users,
- ✦ automatic spawning of text logins (gettys) on virtual terminal (console) activation and user runtime directory management.

The **logind** service is deeply integrated with **systemd**, the new initialization system in Red Hat Enterprise Linux 7, and replaces the **upstart** initialization system from Red Hat Enterprise Linux 6. With this change comes a number of new features and functions. The following is a summary of those most significant:

ConsoleKit

The **ConsoleKit** framework is deprecated in Red Hat Enterprise Linux 7. Equivalent functionality is now provided by **systemd**. Both **ConsoleKit** and **logind** are services for tracking the currently running user sessions.



Note

ConsoleKit had the ability to run arbitrary shell scripts any time the active session on the system changed (using virtual terminal switching). This functionality is no longer provided.

the `/var/log/ConsoleKit/history` file

Previously, **ConsoleKit** was sending log files to `/var/log/ConsoleKit/history`, which the present **logind** does not support. The file has been replaced by the traditional **wtmp** and **utmp** files which now keep track of all logins and logouts on the system. `/var/log/ConsoleKit/history` provided basically the same information as the **wtmp** file, though in a different format. Given the overlap in functionality, **logind** only adopted the **wtmp** file's role.

seat.d scripts

Since **ConsoleKit** is no longer in use, **seat.d** scripts no longer complement the **ConsoleKit** framework, and have been replaced by **systemd-logind**.

the `ck-list-sessions` command

ConsoleKit provided the **ck-list-sessions** command, which returned extended information about recent users, not only regular users but also GUI access with **GDM**. The comparable result can now be reached by running the **logindctl** command:

```
$ loginctl list-sessions
```

multi-seat support

logind along with **GDM** provide the *multi-seat* feature with which the user can attach another monitor, mouse, or keyboard to their machine. Doing so, an additional login screen appears and the user can log in as if they were using another machine.

To list seats that are available on the system, run the following command:

```
$ loginctl list-seats
```

To show the status of a specific seat on the system, run the following command:

```
$ loginctl seat-status seat
```

where *seat* is the name of the seat, for example **seat0**.

To assign specific hardware to a particular seat, run the following command:

```
# loginctl attach seat device
```

where *seat* is the name of the seat, for example **seat1**, and *device* is the device name specified with the **/sys** device path, for example **/sys/devices/pci0000:00/0000:00:02.0/drm/card0**.

To change the assignment, assign the hardware to a different seat, or use the **loginctl flush-devices** command.

Getting More Information

systemd-logind.service(8) – The man page for **logind** provides more information on the **logind** usage and features. It also covers the APIs **systemd-logind** provides (logind D-Bus API documentation).

logind.conf(5) – The man page for **logind.conf** discusses the login manager configuration file.

loginctl(1) – The man page for the **systemd** login manager includes more information on the multi-seat feature.

Chapter 3. GSettings and dconf

One of the major changes in Red Hat Enterprise Linux 7 is the transition from **GConf** (for storing user preferences) to the combination of the **GSettings** high-level configuration system and the **dconf** back end.

GConf

As mentioned above, the **GConf** configuration system has been replaced by two systems:

- the **GSettings** API, and
- the **dconf** back end which serves as a low-level configuration system and program that collects system hardware and software configuration details in a single compact binary format.

Both the **gsettings** command-line tool and the **dconf** utility are used to view and change user settings. The **gsettings** utility does so directly in the terminal, while the **dconf** utility uses the **dconf-editor** GUI for editing a configuration database. See [Chapter 9, *Configuring Desktop with GSettings and dconf*](#) for more information on **dconf-editor** and the **gsettings** utility.

gconftool

The **gconftool-2** tool has been replaced by **gsettings** and **dconf**. Likewise, **gconf-editor** has been replaced by **dconf-editor**.

Overriding

The concept of *keyfiles* has been introduced in Red Hat Enterprise Linux 7: the **dconf** utility allows the system administrator to override the default settings by directly installing *defaults overrides*. For example, setting the default background for all users is now executed by using a **dconf** override placed in a keyfile in the keyfile directory, such as `/etc/dconf/db/local.d/`). To learn more about default values and overriding, see [Section 9.5, “Configuring Custom Default Values”](#).

Locking the Settings

The **dconf** system now allows individual settings or entire settings subpaths to be locked down to prevent user customization. For more information on how to lock settings, see [Section 9.5.1, “Locking Down Specific Settings”](#).

NFS and dconf

Using the **dconf** utility on home directories shared over **NFS** requires additional configuration. See [Section 9.7, “Storing User Settings Over NFS”](#) for information on this topic.

Getting More Information

See [Chapter 9, *Configuring Desktop with GSettings and dconf*](#) for more information on using **GSettings** and **dconf** to configure user settings.

Chapter 4. PolicyKit

The **PolicyKit** utility is a framework, which provides an authorization API used by privileged programs (also called *mechanisms*) offering services to unprivileged programs (also called *subjects*). The following are details on the changes **PolicyKit**, or its system name **polkit**, has undergone.

4.1. Policy Configuration

As far as the new features are concerned, authorization rules are now defined in *JavaScript .rules* files. This means that the same files are used for defining both the rules and the administrator status. Previously, this information was stored in two different file types - ***.pkla** and ***.conf**, which used key/value pairs to define additional local authorizations.

These new *.rules* files are stored in two locations; whereas **polkit** rules for local customization are stored in the **/etc/polkit-1/rules.d/** directory, the third party packages are stored in **/usr/share/polkit-1/rules.d/**.

The existing **.conf** and **.pkla** configuration files have been preserved and exist side by side with *.rules* files. **polkit** has been upgraded for Red Hat Enterprise Linux 7 with the compatibility issue in mind.

The logic in precedence in rules has changed. **polkitd** now reads *.rules* files in lexicographic order from the **/etc/polkit-1/rules.d** and **/usr/share/polkit-1/rules.d** directories. If two files are named identically, files in **/etc** are processed before files in **/usr**. In addition, existing rules are applied by the **/etc/polkit-1/rules.d/49-polkit-pkla-compat.rules** file. They can therefore be overridden by *.rules* files in either **/usr** or **/etc** with a name that comes before 49-polkit-pkla-compat in lexicographic order. The simplest way to ensure that your old rules are not overridden is to begin the name of all other *.rules* files with a number higher than 49.

Here is an example of a *.rules* file. It creates a rule that allows mounting a file system on a system device for the *storage* group. The rule is stored in the **/etc/polkit-1/rules.d/10-enable-mount.rules** file:

Example 4.1. Allow Mounting a File system on a System device

```
polkit.addRule(function(action, subject) {
    if (action.id == "org.freedesktop.udisks2.filesystem-mount-system"
    &&
        subject.isInGroup("storage")) {
        return polkit.Result.YES;
    }
});
```

For more information, see:

- ✦ **polkit(8)** – The man page for the description of the JavaScript rules and the precedence rules.
- ✦ **pkla-admin-identities(8)** and **pkla-check-authorization(8)** – The man pages for documentation of the **.conf** and **.pkla** file formats, respectively.

4.2. Default Policy

The default configuration now allows members of the *wheel* group to authenticate for administrative actions using their own password instead of asking for the *root* password. The default policy is defined in `/etc/polkit-1/rules.d/50-default.rules`.

In the users panel of GNOME Settings, you can configure an account to to an **Administrator**. When you first create the user during the **GNOME Initial Setup**, by default, you will create an **Administrator** account (a member of the *wheel* group).



Note

While **sudo** users are allowed to run programs with the security privileges of another user, **Administrator** is a member of the *wheel* group providing additional special system privileges that empower a user to execute restricted commands.

4.3. Checking Permissions from Scripts

The **pkcheck** utility, which checks whether a process is authorized for action, now supports a new format for parameters specified by the `--process` option. This makes running **pkcheck** safer by avoiding a race condition. The new format looks as follows:

```
--process pid,start-time,uid
```



Important

Do not use the bare *pid* or *pid,start-time* formats for the `--process` option. All scripts that invoke **pkcheck** need to use the new format *pid,start-time,uid* to avoid a race condition.

For more information, see the **pkcheck(1)** man page.

4.4. Extending polkit Configuration

Support for replacing the back-end authority implementation has been removed. A similar level of flexibility can be achieved by writing a JavaScript `.rules` file that calls an external program.

Support for replacing the **PolkitBackendActionLookup** implementation (the interface used to provide data to authentication dialogs) has also been removed from **polkit** in Red Hat Enterprise Linux 7.

For more information on **polkit**, see the **polkit(8)** man page.

Chapter 5. GDM

GDM is the **GNOME Display Manager**, which provides a graphical login environment. After the transition from GNOME 2 to GNOME 3, configuring **GDM** is only possible through **systemd** as it no longer supports other init systems.

the gdm package

The *gdm* package has replaced *xorg-x11-xdm*, which provided a legacy display login manager for the X Window System. As mentioned before, the *gdm* package provides the graphical login screen, shown shortly after boot up, log out, and when user-switching.

GDM and logind

GDM now uses **logind** for defining and tracking users. For more information, see [Chapter 2, logind](#). System administrators can also set up automatic login manually in the GDM custom configuration file: `/etc/gdm/custom.conf`.

custom.conf

GDM configuration is now found in `/etc/gdm/custom.conf`. However for backwards compatibility, if `/etc/gdm/gdm.conf` is found it will be used instead of `custom.conf`. When upgrading, Red Hat recommends removing your old `gdm.conf` file and migrating any custom configuration to `custom.conf`.

Getting More Information

For more information on **GDM**, see [Section 14.1, “What Is GDM?”](#).

For information on configuring and managing user sessions, see [Section 14.3, “User Sessions”](#).

For information on customizing the login screen appearance, see [Section 10.4, “Customizing the Login Screen”](#).

Chapter 6. GNOME Shell Extensions

GNOME Shell in Red Hat Enterprise Linux 7 does not support applets, which were used to customize the default GNOME 2 interface in Red Hat Enterprise Linux 5 and 6. GNOME 3 replaces applets with *GNOME Shell extensions*. Extensions can modify the default GNOME Shell interface and its parts, such as window management and application launching.

6.1. Replacement for the Clock Applet

GNOME 2 in Red Hat Enterprise Linux 5 and 6 featured the **Clock** applet, which provided access to the date, time, and calendar from the GNOME 2 Panel. In Red Hat Enterprise Linux 7, that applet is replaced by the **Clocks** application, which is provided by the *gnome-clocks* package. The user can access that application by clicking the calendar on GNOME Shell's top bar and selecting **Open Clocks**.

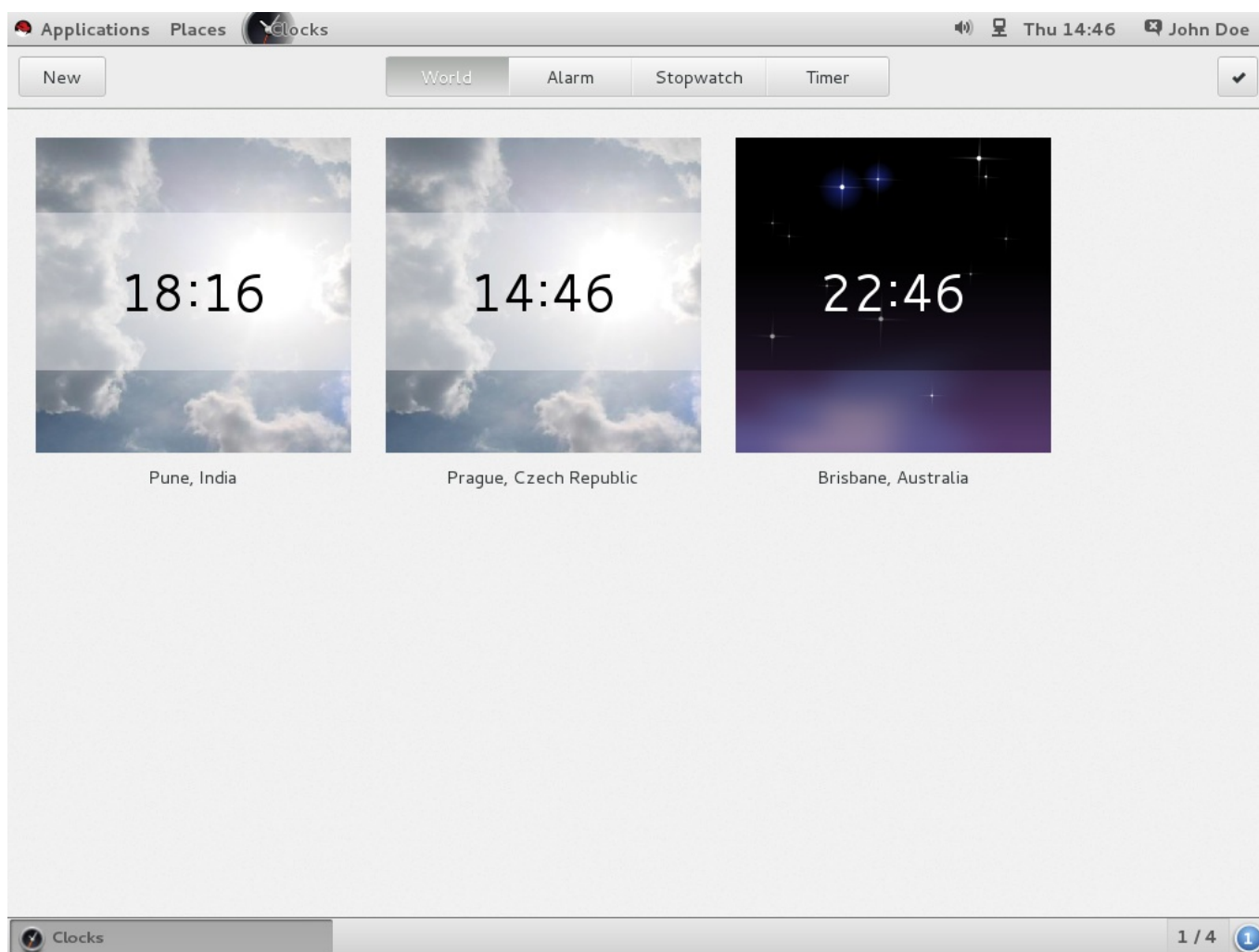


Figure 6.1. Open Clocks

Getting More Information

See [Section 11.1, “What Are GNOME Shell Extensions?”](#) for more detailed information on what GNOME Shell extensions are and how to configure and manage them.

Chapter 7. gnome-session

The **gnome-session** program has also been updated in Red Hat Enterprise Linux 7. It starts the GNOME Desktop as it used to; nonetheless, some of its components have changed.

gnome-session-properties

The **gnome-session-properties** application is still part of the *gnome-session* package. However, its functionality has been limited to managing startup programs for individual users, and saving currently running applications when logging out. The latter functionality has been kept from Red Hat Enterprise Linux 6.

named session

The **Save now** button is able to save a session in a specific time and to name it. The saved sessions are restored on login. When you click **Automatically remember running applications when logging out** in **gnome-session-properties**, the list of saved applications is shown on login as well.

With this update, it is also possible to create multiple layouts and rename them, or to be able to select multiple user sessions for one user account.

Getting More Information

For detailed information on session management, see [Chapter 14, Session Management](#).

For information on how to manage startup (autostart) applications for all users, see [Section 14.3.5, “Adding an Autostart Application for All Users”](#).

Chapter 8. Internationalization

8.1. Input Methods

The default input framework for the GNOME Desktop in Red Hat Enterprise Linux 7 is *IBus* (Intelligent Input Bus). It integrates with GNOME 3 and includes a user interface for input method selection.

8.1.1. Configuring and Switching Input Methods

Users can use the **Region & Language** panel in the GNOME Settings to configure their input methods. More information on using input methods can be found in GNOME Help. To access it, press the **Super** key to enter the **Activities Overview**, type **help**, and then press **Enter**.

For non-GNOME sessions, IBus can configure both XKB layouts and input methods in the **ibus-setup** tool and switch them with a shortcut.

The default shortcut to switch input sources is **Super+Space**. In Red Hat Enterprise Linux 6, the shortcut was **Ctrl+Space**.

8.1.2. Predictive Input Method for IBus

ibus-typing-booster is a predictive input method for the IBus platform. It predicts complete words based on partial input, allowing for faster and more accurate text input. Users can select the desired word from a list of suggestions. **ibus-typing-booster** can also use Hunspell dictionaries to make suggestions for a language.

8.1.3. IBus in the GNOME Desktop Replaces im-chooser

Because IBus is now integrated with the GNOME Desktop, **im-chooser** is deprecated except for using non-IBus input methods.

8.2. Changed File Locations

In Red Hat Enterprise Linux 7, the following changes have been made to the location of the input method and font configuration files, and directories:

- ✦ The **.xinputrc** file has been moved from the user's home directory to the **~/.config/imsettings/** directory.
- ✦ The **.imsettings.log** file has been moved from the user's home directory and can now be found in **~/.cache/imsettings/log**.
- ✦ The **~/.fonts.conf** file has been deprecated. Users are encouraged to move the file to the **~/.config/fontconfig/** directory.
- ✦ The **~/.fonts.conf.d** directory has been deprecated. Users are encouraged to move the directory to the **~/.config/fontconfig/** directory.
- ✦ All disabled **fontconfig** configuration files in the **/etc/fonts/conf.avail/** directory have been moved to the **/usr/share/fontconfig/conf.avail/** directory. If you have any local symbolic links pointing to the old location, remember to update them.

Part II. Configuration and Administration

The second part of *Red Hat Enterprise Linux 7 Desktop Migration and Administration Guide* describes and explains various ways the GNOME Desktop can be configured and administered.

Chapter 9. Configuring Desktop with GSettings and dconf

9.1. Terminology Explained: GSettings, gsettings, and dconf

This section defines several terms that are easily confused.

dconf

dconf is a key-based configuration system which manages user settings. It is the back end for **GSettings** used in Red Hat Enterprise Linux 7. **dconf** manages a range of different settings, including **GDM**, application, and proxy settings.

dconf

The **dconf** command-line utility is used for reading and writing individual values or entire directories from and to a **dconf** database.

GSettings

GSettings is a high-level API for application settings, front end for **dconf**.

gsettings

The **gsettings** command-line tool is used to view and change user settings.

9.2. User and System Settings

dconf allows system administrators and users several levels of control over configuration.

- ✦ Administrators can define default settings that apply to all users.
- ✦ Users can override the defaults with their own settings.
- ✦ Optionally, administrators can also lock settings to prevent users from overriding them. For more information, see [Section 9.5.1, “Locking Down Specific Settings”](#).

9.3. Browsing GSettings Values for Desktop Applications

There are two tools you can use to view and edit **GSettings** values:

- ✦ The **dconf-editor** GUI tool.
- ✦ The **gsettings** command-line utility.

Both **dconf-editor** and the **gsettings** utility let you browse and change options for system and application preferences. You can even use them to change preferences that do not exist in the graphical user interface.

dconf-editor provides a GUI for the browsing and editing of settings. It presents the hierarchy of settings in a tree-view and also displays additional information about each setting, including the description, type and default value. **gsettings** can be used to display and set **dconf** values. It also includes Bash completion for commands and settings. **gsettings** can be used to automate configuration in shell scripts.

Note that both **dconf-editor** and the **gsettings** utility are intended to browse and modify the current user's **GSettings** database. This means that you should always run these tools as a normal user.

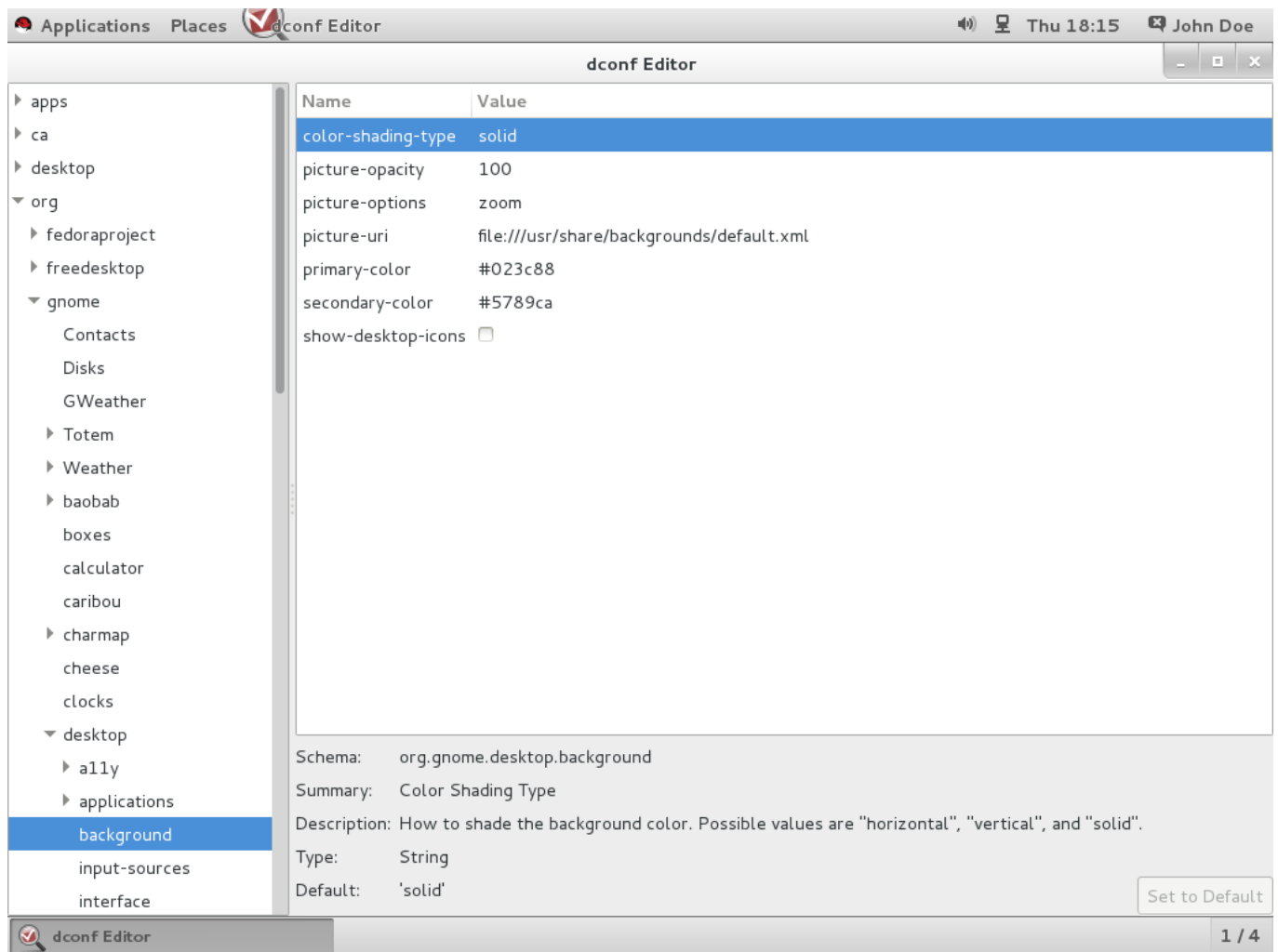


Figure 9.1. dconf-editor showing org.gnome.desktop.background GSettings Keys

You may not have **dconf-editor** installed on the system by default. To install it, run the following command:

```
# yum install dconf-editor
```

Getting More Information

For more information on the **dconf-editor** tool, see the **dconf-editor(1)** man page.

For more information on the **gsettings** utility, see the **gsettings(1)** man page.

9.4. What Are dconf Profiles?

A profile is a list of system's hardware and software configuration databases, which the **dconf** system collects. **dconf** profiles allow you to compare identical systems to troubleshoot hardware or software problems.

The **dconf** system stores its profiles in text files. The **\$DCONF_PROFILE** environment variable can specify a relative path to the file from the **/etc/dconf/profile/** directory, or an absolute path, such as in a user's home directory.

Key pairs which are set in a **dconf** profile will override the default settings unless there is a problem with the value that you have set.

9.4.1. Selecting a dconf Profile

On startup, **dconf** consults the **\$DCONF_PROFILE** environment variable whether the variable is set. If set, **dconf** attempts to open the named profile and aborts if this step fails.

As long as the environment variable is not set, **dconf** attempts to open the profile named *user*. Provided this step still fails, **dconf** falls back to an internal hard-wired configuration.

Each line in a profile specifies one **dconf** database. The first line indicates the database used to write changes whereas the remaining lines show read-only databases. The following is a sample profile stored in **/etc/dconf/profile/user**:

```
user-db:user
system-db:local
system-db:site
```

This sample profile specifies three databases: *user* is the name of the user database which can normally be found in **~/ .config/dconf**, and *local* and *site* are system databases, located in **/etc/dconf/db/**.



Important

The **dconf** profile for a session is determined at login, so users will have to log out and log in to apply a new **dconf** user profile to their session.

9.5. Configuring Custom Default Values

Machine-wide default settings can be set by providing a default for a key in a **dconf** profile. These defaults can be overridden by the user.

To set a default for a key, the **user** profile must exist and the value for the key must be added to a **dconf** database.

Example 9.1. Set the Default Background

1. If it does not already exist, create the **user** profile in **/etc/dconf/profile/user**:

```
user-db:user
system-db:local
```

where *local* is the name of a **dconf** database.

2. Create a *keyfile* for the local database in **/etc/dconf/db/local.d/01-background**, which contains the following default settings:

```
# dconf path
[org/gnome/desktop/background]

# GSettings key names and their corresponding values
picture-uri='file:///usr/local/share/backgrounds/wallpaper.jpg'
picture-options='scaled'
primary-color='000000'
secondary-color='FFFFFF'
```

In the default setting of the *keyfile*, the following GSettings keys are used:

Table 9.1. org.gnome.desktop.background schemas GSettings Keys

Key Name	Possible Values	Description
picture-options	"none", "wallpaper", "centered", "scaled", "stretched", "zoom", "spanned"	Determines how the image set by <i>wallpaper_filename</i> is rendered.
picture-uri	filename with the path	URI to use for the background image. Note that the backend only supports local (file://) URIs.
primary-color	default: 000000	Left or Top color when drawing gradients, or the solid color.
secondary-color	default: FFFFFFFF	Right or Bottom color when drawing gradients, not used for solid color.

3. Edit the *keyfile* according to your preferences. For more information, see [Section 9.3, “Browsing GSettings Values for Desktop Applications”](#).
4. Update the system databases:

```
# dconf update
```



Important

When the **user** profile is created or changed, the user will need to log out and log in again before the changes will be applied.

If you want to avoid creating a **user** profile, you can use the **dconf** command-line utility to read and write individual values or entire directories from and to a **dconf** database. For more information, see the **dconf(1)** man page.

9.5.1. Locking Down Specific Settings

The lockdown mode in **dconf** is a useful tool for preventing users from changing specific settings.

To lock down a **GSettings** key, you will need to create a **locks** subdirectory in the keyfile directory (for instance, `/etc/dconf/db/local.d/locks/`). The files inside this directory contain a list of keys to lock, and you may add any number of files to this directory.



Important

If you do not enforce the system settings using a lockdown, users can easily override the system settings with their own. Any settings users have made will take precedence over the system settings unless there is a lockdown enforcing the system settings.

The example below demonstrates how to lock settings for the default wallpaper. Follow the procedure for any other setting you need to lock.

Example 9.2. Locking Down the Default Wallpaper

1. Set a default wallpaper by following steps in [Section 10.5.1, “Customizing the Default Desktop Background”](#).
2. Create a new directory named `/etc/dconf/db/local.d/locks/`.
3. Create a new file in `/etc/dconf/db/local.d/locks/00-default-wallpaper` with the following contents, listing one key per line:

```
# Prevent users from changing values for the following keys:
/org/gnome/desktop/background/picture-uri
/org/gnome/desktop/background/picture-options
/org/gnome/desktop/background/primary-color
/org/gnome/desktop/background/secondary-color
```

4. Update the system databases:

```
# dconf update
```

9.6. GSettings Keys Properties

You can set a GSettings key in a `dconf` database only once. If you set the same key to different values in different places in the `dconf` database, only one of them will take effect. In other words, you will override one key setting with another.

In each `dconf` system database, each key can only have one value. Values for some keys are of an array type. For this value type, the value can be specified as a list of multiple elements separated by a comma. An example of an array value is shown below:

```
key=['option1', 'option2']
```

Example 9.3. The `org.gnome.desktop.input-sources.xkb-options` GSettings Key

Setting the `org.gnome.desktop.input-sources.xkb-options` GSettings key works as follows. It can only be set once, so if you want two elements in the value you need to specify them in the same configuration file. Since this value is an array type, it can have several elements:

```
[org/gnome/desktop/input-sources]
# Enable Ctrl-Alt-Backspace for all users
# Set the Right Alt key as the Compose key and enable it
```

```
xkb-options=['terminate:ctrl_alt_bksp', 'compose:ralt']
```

9.7. Storing User Settings Over NFS

For **dconf** to work correctly when using **Network File System (NFS)** home directories, the **dconf keyfile back end** must be used.

Note that the *glib2-fam* package must be installed on the system when using the **dconf keyfile back end**. Otherwise notifications on configuration changes made on remote machines will not work properly.

Procedure 9.1. Setting the dconf Keyfile Back End

1. Verify that the *glib2-fam* package is installed on the system.
 - a. The system must be subscribed to the **Optional** channel. To learn how to subscribe the system to the **Optional** channel, read the following resource:

✦ <https://access.redhat.com/solutions/392003>

- b. Install the *glib2-fam* package by running the following command:

```
# yum install glib2-fam
```

2. Create or edit the `/etc/dconf/profile/user` file on every client.
3. At the very beginning of this file, add the following line:

```
service-db:keyfile/user
```

The **dconf keyfile back end** will only take effect the next time that the user logs in. It polls the keyfile to determine whether updates have been made, so settings may not be updated immediately.

Chapter 10. Default Appearance

The appearance and functionality of the GNOME 3 Desktop can be customized both by individual users and by system administrators for all users. System administrators can provide a customized default desktop configuration to all users and even lock down those features to prevent user changes.

This chapter describes how to customize the installation program (**Anaconda**), the system boot utilities (**GRUB**, **Plymouth**), the login screen, fonts, keyboard layouts, the screen shield, and desktop backgrounds.

10.1. Branding Anaconda

If you are building your own customized distribution at your company, you can change the brand graphics and product name used in the Red Hat Enterprise Linux 7 installer, **Anaconda**.

For more information on changing the **Anaconda** graphics and product name, see the [Anaconda Customization Guide](#) for Red Hat Enterprise Linux 7.

10.2. Boot Loader Screen

The Red Hat Enterprise Linux 7 boot loader is **GRUB 2**. You can change several parts of **GRUB 2**'s appearance. The following sections show you how to change the distribution name, menu colors, and the background image.

10.2.1. Distribution Name

By default, **GRUB 2** displays a title containing the distribution name. You can change the title by customizing the **GRUB_DISTRIBUTOR** variable in the `/etc/default/grub` file.

Procedure 10.1. Setting the Distribution Name

1. As root, open the `/etc/default/grub` file.
2. Use the **GRUB_DISTRIBUTOR** variable to specify your own distribution name. The following is the excerpt of the `/etc/default/grub` file. Update the second line with the **GRUB_DISTRIBUTOR** variable:

```
GRUB_TIMEOUT=5
GRUB_DISTRIBUTOR=Our Corporate Distro V1.2
GRUB_DEFAULT=saved
GRUB_DISABLE_SUBMENU=true
...
```

3. Run the following command as root to ensure the changes take effect:

```
grub2-mkconfig -o /boot/grub2/grub.cfg
```

**Note**

You need to update the `/etc/default/grub` directory after every change you make in there.

Also, you can change the colors or the font of the text displayed at the **GRUB 2** screen by modifying the `/etc/grub.d/40_custom` plain text file or by adding another file in the `/etc/grub.d/` directory. You can choose from the following directives:

- ✦ `set color_normal=foreground/background`
- ✦ `set color_highlight=foreground/background`
- ✦ `set menu_color_normal=foreground/background`
- ✦ `set menu_color_highlight=foreground/background`

See the `grub(8)` man page for more information on the semantics and accepted values for these variables.

10.2.2. GRUB 2 Background

There is no **GRUB** background configured in the default setup. Nevertheless, it is possible to add an image to the boot loader screen.

Before you configure a background image for **GRUB 2**, it is necessary to have a **GRUB 2** Unicode font installed for the `gfxterm` graphical terminal. No font is provided by default, so the prerequisite is to convert an existing TTF or OTF file to the PF2 format used by **GRUB 2**:

By running the `grub2-mkfont` command, convert an existing TTF or OTF file to the PF2 format. Name the output file `unicode.pf2` to work correctly with the default configuration as written by `grub2-mkconfig`.

Example 10.1. Converting a TTF File to PF2 Format

This example demonstrates the conversion from the `LiberationSerif-Bold.ttf` to the .pf2 format. The new .pf2 format file is called `unicode2` so as not to be confused with the existing `unicode.pf2` in the `/grub2/fonts/` directory.

```
grub2-mkfont --output=/boot/grub2/fonts/unicode2.pf2 --size=24
/usr/share/fonts/liberation/LiberationSerif-Bold.ttf
```

Now, you can configure a background image for **GRUB 2**. The image file can reside outside of the `boot/` directory. Supported formats are PNG, JPG, JPEG, and TGA.

Procedure 10.2. Adding an Image to the Boot Loader Screen

1. Open the `/etc/default/grub` file as root.
2. Edit the following configuration variables in the file:

```
✦ GRUB_TERMINAL=gfxterm
```

```
GRUB_BACKGROUND=path_to_the_image.png
```

The value of this option must be a file readable by GRUB at boot time.

3. Run **grub2-mkconfig -o /boot/grub2/grub.cfg** to write the background into the configuration file.
4. Reboot your system.

If necessary, the image will be scaled to fit the screen.

10.3. Plymouth

Plymouth is a graphical boot system and logger for Red Hat Enterprise Linux 7, which makes use of the kernel-based mode setting (KMS) and Direct Rendering Manager (DRM). **Plymouth** also handles user interaction during boot.

You can customize the boot screen appearance by choosing from various static or animated graphical themes. New themes can be created based on the existing ones.

10.3.1. Branding the Theme

Each theme for **Plymouth** is composed of a theme data file and a compiled *splash plugin module*. The data file has a **.plymouth** extension, and is installed in the **/usr/share/plymouth/themes/** directory.

The configuration data is specified under the **[Plymouth Theme]** section, in the key-value format. Valid keys for this group are *Name*, *Description*, and *ModuleName*. While the first two keys are self-explanatory, the third specifies the name of a **Plymouth** splash plugin module. Different plugins provide different animations at boot time and the underlying implementation of the various themes:

Example 10.2. Example .plymouth File

```
[Plymouth Theme]
Name=Charge
Description=A theme that features the shadowy hull of my logo charge up
and finally burst into full form.
ModuleName=two-step
```

Procedure 10.3. Changing the Plymouth Theme

1. Search for the existing **Plymouth** themes and choose the most preferable one. Run the following command:

```
# yum search plymouth-theme
```

Or run the **plymouth-set-default-theme --list** command to view the installed themes.

You can also install all the themes when installing all the *plymouth* packages. However, you will install a number of unnecessary packages as well.


```
# yum install plymouth\*
```

2. Set the new theme as default with the `plymouth-set-default-theme theme_name` command.

Example 10.3. Set "spinfinity" as the Default Theme

You have chosen the *spinfinity* theme, so you run:

```
# plymouth-set-default-theme spinfinity
```

3. Rebuild the `initrd` daemon after editing otherwise your theme will not show in the boot screen. Do so by running:

```
# dracut -f
```

10.3.2. Creating a New Plymouth Theme

If you do not want to choose from the given list of themes, you can create your own. The easiest way is to copy an existing theme and modify it.

Procedure 10.4. Creating Your Own Theme from an Existing Theme

1. Copy an entire content of a `plymouth/` directory. As a template directory, use, for example, the default theme for Red Hat Enterprise Linux 7, `/usr/share/plymouth/themes/charge/charge.plymouth`, which uses a **two-step** splash plugin with the following settings:

```
[Plymouth Theme]
Name=Charge
Description=A theme that features the shadowy hull of my logo
charge up and finally burst into full form.
ModuleName=two-step

[two-step]
ImageDir=/usr/share/plymouth/themes/charge
HorizontalAlignment=.5
VerticalAlignment=.5
Transition=none
TransitionDuration=0.0
BackgroundStartColor=0x202020
BackgroundEndColor=0x202020
```

2. Save the `charge.plymouth` file with a new name in the `/usr/share/plymouth/themes/newtheme/` directory, in the following format:

```
newtheme.plymouth
```

3. Update the settings in your `/usr/share/plymouth/themes/newtheme/newtheme.plymouth` file according to your preferences, changing color, alignment, or transition.

4. Set your *newtheme* as default by running the following command:

```
# plymouth-set-default-theme newtheme
```

5. Rebuild the `initrd` daemon after changing the theme by running the command below:

```
# dracut -f
```

10.3.2.1. Using Branded Logo

Some of the plugins show a branded logo as part of the splash animation. If you wish to add your own logo into your theme, follow the short procedure below.



Important

Keep in mind that the image format of your branded logo must be of the *.png* format.

Procedure 10.5. Add Your Logo to the Theme

1. Create an image file named `logo.png` with your logo.
2. Edit the `/usr/share/plymouth/themes/newtheme.plymouth` file by updating the `ImageDir` key to point to the directory with the `logo.png` image file you created in step 1:

```
ImageDir=/usr/share/plymouth/themes/newtheme
```

For more information on **Plymouth**, see the `plymouth(8)` man page.

10.4. Customizing the Login Screen

The GNOME Login Screen has several elements that can be customized. These changes can only be performed by a system administrator and affect all users. This section describes how to customize the greeter text, logo, keyboard layout, and user list. Note that the login screen background image cannot be customized.

10.4.1. Adding a Greeter Logo

The greeter logo on the login screen is controlled by the `org.gnome.login-screen.logo` GSettings key. Since **GDM** uses its own `dconf` profile, you can add a greeter logo by changing the settings in that profile.

For more information about GSettings and `dconf`, see [Chapter 9, Configuring Desktop with GSettings and dconf](#).

When choosing an appropriate picture for the logo to your login screen, consider the following picture requirements:

- ✦ All the major formats are supported: ANI, BPM, GIF, ICNS, ICO, JPEG, JPEG 2000, PCX, PNM, PBM, PGM, PPM, GTIFF, RAS, TGA, TIFF, XBM, WBMP, XPM, and SVG.
- ✦ The size of the picture scales proportionally to the height of 48 pixels. So, if you set the logo to 1920x1080, for example, it changes into an 85x48 thumbnail of the original picture.

Procedure 10.6. Adding a logo to the login screen

1. Create a **gdm** database for machine-wide settings in `/etc/dconf/db/gdm.d/01-logo`:

```
[org/gnome/login-screen]
logo='/usr/share/pixmaps/logo/greeter-logo.png'
```

Replace `/usr/share/pixmaps/logo/greeter-logo.png` with the path to the image file you want to use as the greeter logo.

2. Update the system databases:

```
# dconf update
```

Next time you log in, the screen will show with the new login logo.

10.4.1.1. What if the Logo Does Not Update?

Make sure that you have run the **dconf update** command as root to update the system databases.

In case the logo does not update, try restarting **GDM**. For more information, see [Section 14.1.1, “Restarting GDM”](#).

10.4.2. Displaying a Text Banner

The text banner on the login screen is controlled by the following GSettings keys (for more information about GSettings, see [Chapter 9, Configuring Desktop with GSettings and dconf](#)):

org.gnome.login-screen.banner-message-enable

enables showing the banner message.

org.gnome.login-screen.banner-message-text

shows the text banner message in the login window.

Note that since **GDM** uses its own **dconf** profile, you can configure the text banner by changing the settings in that profile.

Procedure 10.7. Displaying a Text Banner on the Login Screen

1. Create a **gdm** database for machine-wide settings in `/etc/dconf/db/gdm.d/01-banner-message`:

```
[org/gnome/login-screen]
banner-message-enable=true
banner-message-text='Type the banner message here'
```

2. Update the system databases:

```
# dconf update
```

The banner text appears when you have selected yourself from the user list or when you start typing into the box. The next time you log in you will see the text when inserting the password.



Important

Keep the banner message reasonably short as longer texts may not fit in the screen.

10.4.2.1. What if the Banner Message Does Not Update?

If the banner message does not show, make sure you have run the `dconf update` command.

In case the banner message does not update, try restarting **GDM**. For more information, see [Section 14.1.1, “Restarting GDM”](#).

10.4.3. Displaying Multiple Keyboard Layouts

You can add alternative keyboard layouts for users to choose from on the login screen.

This can be helpful for users who normally use different keyboard layouts from the default and who want to have those keyboard layouts available at the login screen. Nevertheless, the selection only applies when using the login screen. Once you are logged in your own user settings take over.

Procedure 10.8. Changing the System Keyboard Layout Settings

1. Find the codes of the desired language layouts in the `/usr/share/X11/xkb/rules/base.lst` file under the section named **! layout**.
2. Use the `localectl` tool to change the system keyboard layout settings as follows:

```
localectl set-x11-keymap layout
```

You can specify multiple layouts as a comma-separated list. For example, to set **es** as the default layout, and **us** as the secondary layout, run the following command:

```
$ localectl set-x11-keymap es,us
```

3. Log out to find that the defined layouts are available at the top bar on the login screen.

Note that you can also use the `localectl` tool to specify the machine-wide default keyboard model, variant, and options. See the `localectl(1)` man page for more information.

10.4.4. Disabling the Login Screen User List

You can disable the user list shown on the login screen by setting the `org.gnome.login-screen.disable-user-list` GSettings key.

When the user list is disabled, users need to type their user name and password at the prompt to log in.

Procedure 10.9. Setting the org.gnome.login-screen.disable-user-list Key

1. Create a `gdm` database for machine-wide settings in `/etc/dconf/db/gdm.d/00-login-screen`:

```
[org/gnome/login-screen]
# Do not show the user list
disable-user-list=true
```

2. Update the system databases by updating the **dconf** utility:

```
# dconf update
```

10.5. Customizing Desktop Backgrounds

Using the **dconf** utility, you can configure the default background, add extra backgrounds, or add multiple backgrounds.

If the users of the system will not be permitted to change these settings from the defaults, then system administrators need to lock the settings using the locks directory. Otherwise each user will be able to customize the setting to suit their own preferences. For more information, see [Section 9.5.1, “Locking Down Specific Settings”](#).

10.5.1. Customizing the Default Desktop Background

You can configure the default desktop background and its appearance by setting the relevant GSettings keys in the **org.gnome.desktop.background** schema.

For more information about GSettings, see [Chapter 9, Configuring Desktop with GSettings and dconf](#).

Procedure 10.10. Setting the Default Background

1. Create a **local** database for machine-wide settings in **/etc/dconf/db/local.d/00-background**:

```
# Specify the dconf path
[org/gnome/desktop/background]

# Specify the path to the desktop background image file
picture-uri='file:///usr/local/share/backgrounds/wallpaper.jpg'
# Specify one of the rendering options for the background image:
# 'none', 'wallpaper', 'centered', 'scaled', 'stretched', 'zoom',
# 'spanned'
picture-options='scaled'
# Specify the left or top color when drawing gradients or the solid
color
primary-color='000000'
# Specify the right or bottom color when drawing gradients
secondary-color='FFFFFF'
```

2. Override the user's setting to prevent the user from changing it in **/etc/dconf/db/local.d/locks/background**:

```
# List the keys used to configure the desktop background
/org/gnome/desktop/background/picture-uri
/org/gnome/desktop/background/picture-options
/org/gnome/desktop/background/primary-color
/org/gnome/desktop/background/secondary-color
```

- Update the system databases:

```
# dconf update
```

- Users must log out and back in again before the system-wide settings take effect.

10.5.2. Adding Extra Backgrounds

You can make extra backgrounds available to users on your system.

- Create a *filename.xml* file specifying your extra background's appearance using the *org.gnome.desktop.background* schemas. Here is a list of the most frequently used schemas:

Table 10.1. org.gnome.desktop.background schemas GSettings Keys

Key Name	Possible Values	Description
picture-options	"none", "wallpaper", "centered", "scaled", "stretched", "zoom", "spanned"	Determines how the image set by <i>wallpaper_filename</i> is rendered.
color-shading-type	"horizontal", "vertical", and "solid"	How to shade the background color.
primary-color	default: #023c88	Left or Top color when drawing gradients, or the solid color.
secondary-color	default: #5789ca	Right or Bottom color when drawing gradients, not used for solid color.

The full range of options is to be found in the **dconf-editor** GUI or **gsettings** command-line utility. For more information, see [Section 9.3, “Browsing GSettings Values for Desktop Applications”](#).

- Store the *filename.xml* file in the `/usr/share/gnome-background-properties/` directory.

When the user clicks their name in the top right corner, chooses **Settings**, and in the **Personal** section of the table selects **Background**, they will see the new background available.

Look at the example and see how *org.gnome.desktop.background* GSettings keys are implemented practically:

Example 10.4. Extra Backgrounds File

```
<?xml version="1.0" encoding="UTF-8"?>
<!DOCTYPE wallpapers SYSTEM "gnome-wp-list.dtd">
<wallpapers>
  <wallpaper deleted="false">
    <name>Company Background</name>
    <name xml:lang="de">Firmenhintergrund</name>
    <filename>/usr/local/share/backgrounds/company-
wallpaper.jpg</filename>
    <options>zoom</options>
    <shade_type>solid</shade_type>
```

```

    <pcolor>#ffffff</pcolor>
    <scolor>#000000</scolor>
  </wallpaper>
</wallpapers>

```

In one configuration file, you can specify multiple `<wallpaper>` elements to add more backgrounds.

See the following example which shows an .xml file with two `<wallpaper>` elements, adding two different backgrounds:

Example 10.5. Extra Backgrounds File with Two Wallpaper Elements

```

<?xml version="1.0" encoding="UTF-8"?>
<!DOCTYPE wallpapers SYSTEM "gnome-wp-list.dtd">
<wallpapers>
  <wallpaper deleted="false">
    <name>Company Background</name>
    <name xml:lang="de">Firmenhintergrund</name>
    <filename>/usr/local/share/backgrounds/company-
wallpaper.jpg</filename>
    <options>zoom</options>
    <shade_type>solid</shade_type>
    <pcolor>#ffffff</pcolor>
    <scolor>#000000</scolor>
  </wallpaper>
  <wallpaper deleted="false">
    <name>Company Background 2</name>
    <name xml:lang="de">Firmenhintergrund 2</name>
    <filename>/usr/local/share/backgrounds/company-wallpaper-
2.jpg</filename>
    <options>zoom</options>
    <shade_type>solid</shade_type>
    <pcolor>#ff0000</pcolor>
    <scolor>#00ffff</scolor>
  </wallpaper>
</wallpapers>

```

10.5.3. Setting the Screen Shield

Screen Shield is the screen that quickly slides down when the system is suspended. It is controlled by the `org.gnome.desktop.background.picture-uri` GSettings key. Since **GDM** uses its own **dconf** profile, you can set the default background by changing the settings in that profile.

For more information about GSettings and **dconf**, see [Chapter 9, Configuring Desktop with GSettings and dconf](#).

Procedure 10.11. Adding a Logo to the Screen Shield

1. Create a **gdm** database for machine-wide settings in `/etc/dconf/db/gdm.d/01-corp-login`:

```

[org/gnome/desktop/background]
picture-uri='file:///opt/corp/background.jpg'

```

Replace `/opt/corp/background.jpg` with the path to the image file you want to use as the Screen Shield.

Supported formats are PNG, JPG, JPEG, and TGA. The image will be scaled if necessary to fit the screen.

2. Update the system databases:

```
# dconf update
```

Next time you log in, the new Screen Shield will show in the background. In the foreground, time, date and the current day of the week will be displayed.

10.5.3.1. What If the Screen Shield Does Not Update?

Make sure that you have run the `dconf update` command as root to update the system databases.

In case the background does not update, try restarting **GDM**. For more information, see [Section 14.1.1, “Restarting GDM”](#).

10.6. Configuring Fonts

A component of Red Hat Enterprise Linux 7, **fontconfig** is a library to configure and customize fonts. It simplifies font management and provides display features, such as anti-aliasing. **fontconfig** allows applications that are compatible with the library to access fonts installed on the system by the system administrator or individual users.

To compile a list of fonts available on the system, **fontconfig** searches directories that are by default listed in the `/etc/fonts/fonts.conf` configuration file.

To list all fonts installed on the system that are known to **fontconfig**, you can use the `fc-list` command:

```
$ fc-list : file
```

For more information on `fc-list`, see the `fc-list(1)` man page.

For more information on **fontconfig** and its configuration, see the `fonts-conf(5)` man page.

10.6.1. Adding Extra Fonts for All Users

You can install an extra font which will be available to users in applications that use **fontconfig** for font handling.

Procedure 10.12. Installing an Extra Font

1. To install the font, copy it to the `/usr/local/share/fonts/` directory. If that directory does not exist, create it.

Create a subdirectory for each font-family you are installing as some fonts have multiple files for bold, italic, and so on.

2. Make sure that the font cache is updated by running the following command:


```
$ fc-cache /usr/local/share/fonts/
```

fontconfig will detect the new fonts and make them available. Unlike user sessions, some applications might need to be restarted before they will allow you to use the new fonts, though.

Alternatively, you can also install fonts in another system directory than `/usr/local/share/fonts/` if that directory is listed in the `/etc/fonts/fonts.conf` file. If it is not, then you need to create your own machine-wide configuration file in `/etc/fonts/local.conf` containing the directory you want to use. See the `fonts-conf(5)` man page for more information.

If you are using an alternative directory, remember to specify the directory name when updating the font cache with the `fc-cache` command:

```
$ fc-cache directory_name
```

10.6.2. Adding Extra Fonts for Individual Users

You can install an extra font which will be available to a specific user on your system in applications that use **fontconfig** for font handling.

Procedure 10.13. Installing an Extra Font

1. Copy the font to the `~/local/share/fonts/` directory to install it.
2. Make sure that the font cache is updated by running the following command:

```
$ fc-cache ~/local/share/fonts
```

fontconfig will detect the new fonts and make them available. You may need to restart running applications to see the changes. User sessions do not need to be restarted.

10.6.3. Substituting Fonts

When an application requests a font that is not available on the system, **fontconfig** reads the `/etc/fonts/fonts.conf` configuration file to determine the most similar available font to substitute for the requested font. Individual characters can also be substituted if they are not present in the requested font.

To configure a font substitution for a specific font, you can use the **Fonts Tweak Tool**. Note that the tool can only be used for per-user configuration.

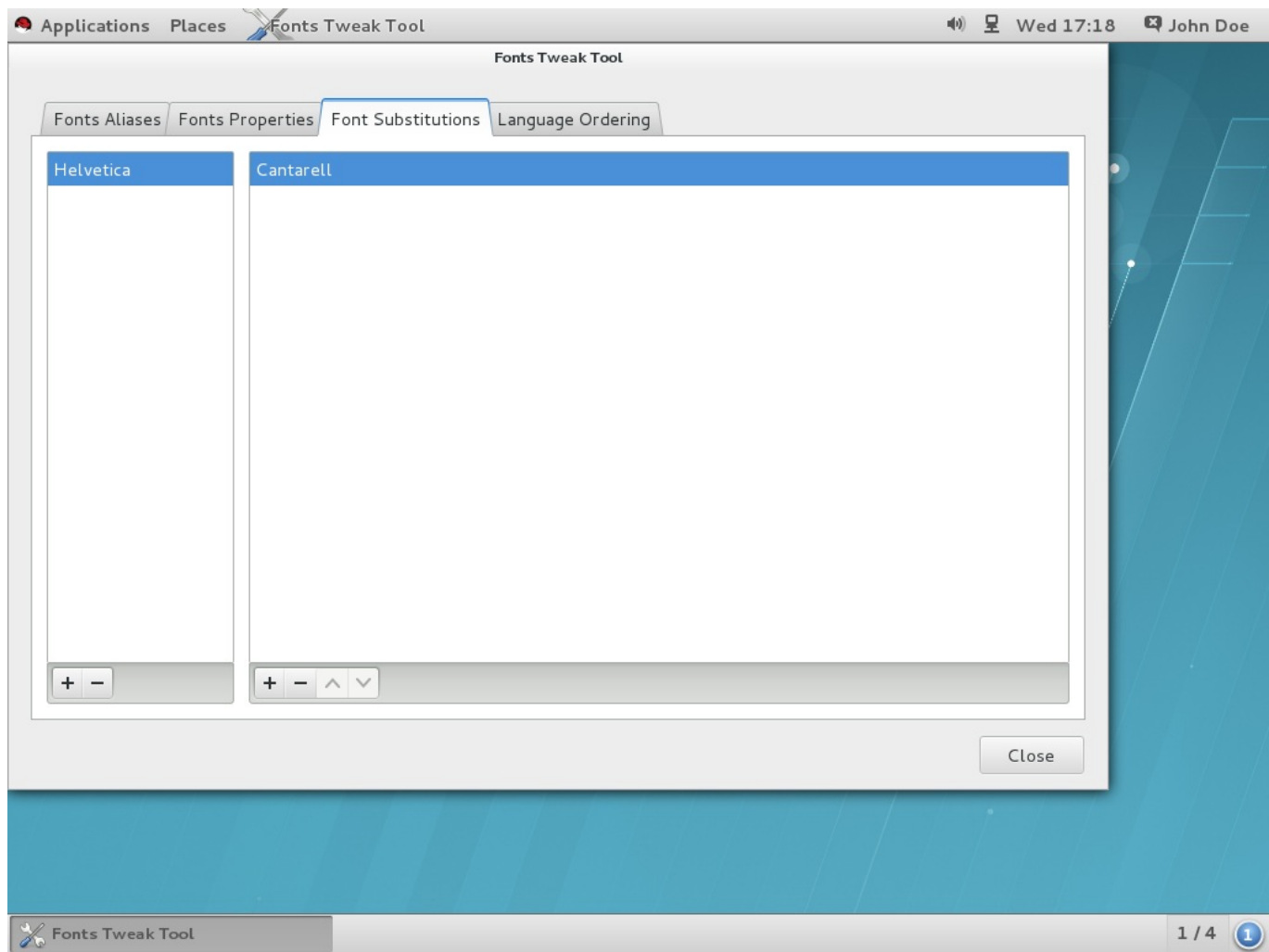


Figure 10.1. Substituting Fonts with Fonts Tweak Tool

Fonts Tweak Tool may not be installed by default on the system, to install it, run the following command:

```
# yum install fonts-tweak-tool
```

Procedure 10.14. Substituting a Font

1. Start the **Fonts Tweak Tool** by pressing the **Super** key to enter the **Activities Overview**, type **Fonts Tweak Tool**, and then press **Enter**.
2. Click the **Font Substitutions** tab.
3. Click the **+** button at the bottom left of the left pane, select or type the name of the font you want to substitute, and then click **Add**.
4. Click the **+** button at the bottom left of the right pane, select the name of the font you want to use to substitute for the first font, and then click **Add**.
5. Click **Close**.

Now, you have substituted an old font with your favourite which is now available to you.

10.6.4. Configuring Font Aliases

For each locale, **Fonts Tweak Tool** allows the individual users to configure different font aliases:

- » Sans Serif,
- » Serif,
- » Monospace,
- » Cursive, and
- » Fantasy.

These aliases are used to represent common types of fonts, such as the serif and monospace types. Applications as well as users can then refer to these aliases instead of having to specify a particular font installed on the system.

Users can override system default fonts by selecting a custom font for each of these aliases.

Fonts Tweak Tool may not be installed by default on the system, to install it, run the following command:

```
# yum install fonts-tweak-tool
```

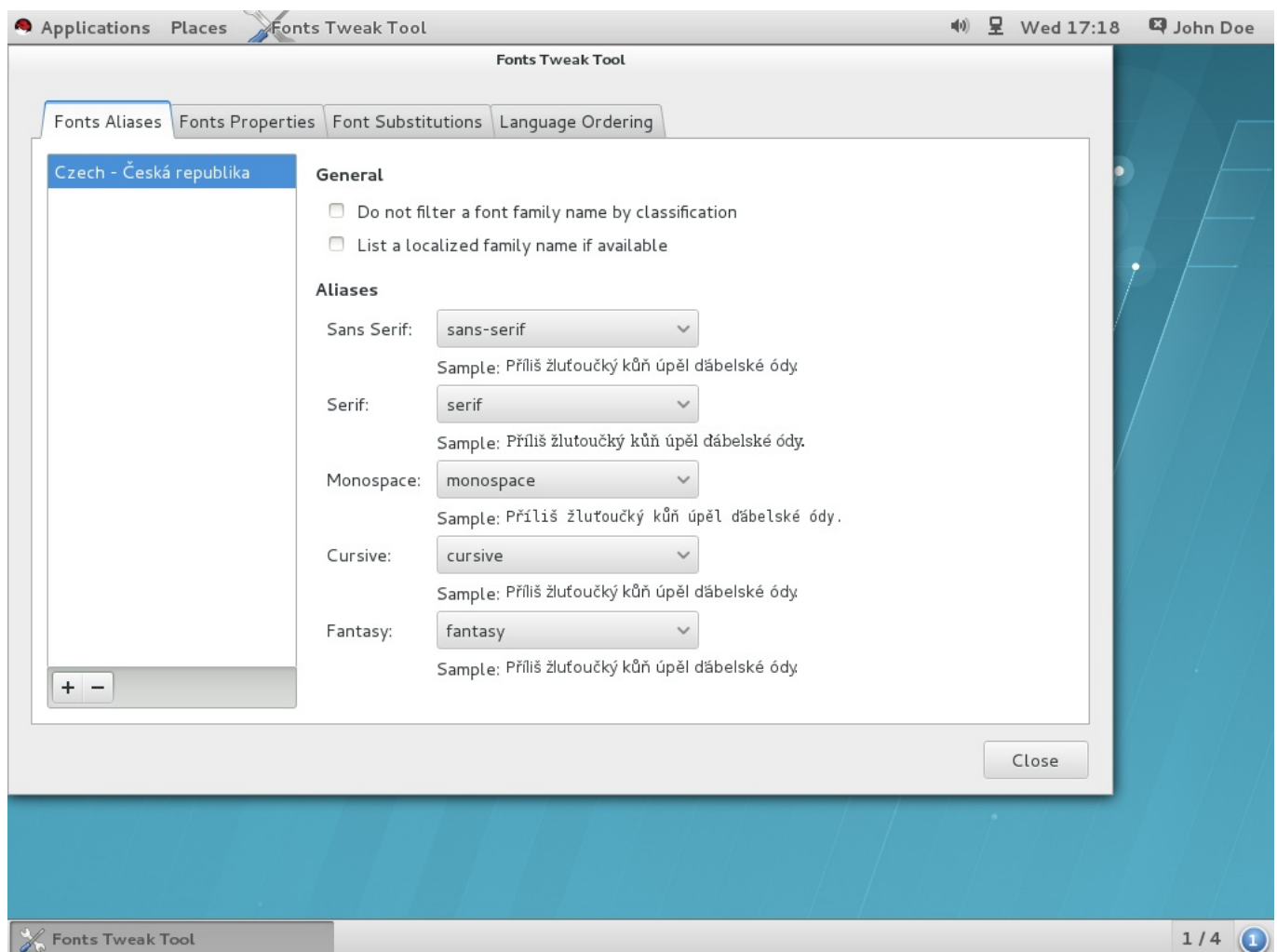


Figure 10.2. Configuring a Font Alias with Fonts Tweak Tool

Procedure 10.15. Configuring a Font Alias

1. Start the **Fonts Tweak Tool** by pressing the **Super** key to enter the **Activities Overview**, type **Fonts Tweak Tool**, and then press **Enter**.
2. Click the **Font Aliases** tab.
3. Click the **+** button at the bottom left of the left pane, select or type the name of the locale you want to configure the font aliases for, and then click **Add**.

To configure default font aliases regardless of the used locale, select Default from the list of locales.

4. At the right pane, locate the font alias you want to override the system defaults for, and select the custom font from the drop-down list.
5. Click **Close**.

Now, you have overridden the system default alias and selected a new custom font.

10.6.5. Multiple Language Ordering

Fonts Tweak Tool allows users who have multiple languages configured for the user interface to change the order in which the languages are displayed in applications. This feature is especially useful for users who use both Latin and non-Latin based fonts and do not want to use the non-Latin based fonts to display Latin characters.

For example, if you have Japanese and English configured as your languages, and you want to avoid displaying English Latin characters with your Japanese non-Latin based fonts, configure English as the primary language, and Japanese as secondary. The Latin-based fonts will then be used to display English characters, and the non-Latin based fonts will only be used to display Japanese characters.

Fonts Tweak Tool may not be installed by default on the system, to install it, run the following command:

```
# yum install fonts-tweak-tool
```

Procedure 10.16. Configuring Multiple Languages

1. Start the **Fonts Tweak Tool** by pressing the **Super** key to enter the **Activities Overview**, type **Fonts Tweak Tool**, and then press **Enter**.
2. Click the **Language Ordering** tab.
3. Click the **+** button at the bottom left of the window, select or type the name of the language you want to configure as primary, and then click **Add**.
4. To add another language, click the **+** button at the bottom left of the window, select the name of the language you want to configure as secondary, and then click **Add**.

Repeat this step to add more languages.

5. Click **Close**.



Important

For the user interface, you have now set your preferences in the order in which the languages are displayed in applications.

When multiple languages are configured, some applications (such as **xterm** and other **Xft** applications) may not display all characters for the user's languages properly. This is due to the lack of support for fallback fonts in those applications, or in the rendering libraries the applications are using.

10.6.6. Configuring Font Properties

Fonts Tweak Tool lets users change various font properties, allowing for fine-grained per-user font configuration.

Fonts Tweak Tool may not be installed by default on the system, to install it, run the following command:

```
# yum install fonts-tweak-tool
```

Procedure 10.17. Changing the Font Properties

1. Start the **Fonts Tweak Tool** by pressing the **Super** key to enter the **Activities Overview**, type **Fonts Tweak Tool**, and then press **Enter**.
2. Click the **Fonts Properties** tab.
3. Click the **+** button at the bottom left of the window, select or type the name of the font you want to change the properties for, and then click **Add**.

Repeat this step to add more fonts.

4. Change the font properties as needed.
5. Click **Close**.

Depending on the added font, some of the font properties that the user can configure in the **Fonts Properties** tab include:

Use the embedded bitmap font if available.

This is useful for users who prefer bitmap fonts over outline fonts. To use the embedded bitmap font, add a suitable font and click **Use embedded bitmap font if any**.

Use the JIS X 2013:2004 glyphs.

To use Japanese glyphs from the JIS X 2013:2004 standard, rather than from JIS X 2013:2000 or older, add a font that supports JIS X 2013:2004, and then click on **jp04** in the **Features** list.

Chapter 11. GNOME Shell Extensions

This chapter introduces system-wide configuration of GNOME Shell Extensions. You will learn how to view the extensions, how to enable them, how to lock a list of enabled extensions or how to set up several extensions as mandatory for the users of the system.

You will be using **dconf** when configuring GNOME Shell Extensions, setting the following two GSettings keys:

- » `org.gnome.shell.enabled-extensions`
- » `org.gnome.shell.development-tools`

For more information on **dconf** and **GSettings**, see [Chapter 9, Configuring Desktop with GSettings and dconf](#).

11.1. What Are GNOME Shell Extensions?

GNOME Shell extensions allow for the customization of the default GNOME Shell interface and its parts, such as window management and application launching.

Each GNOME Shell extension is identified by a unique identifier, the `uuid`. The `uuid` is also used for the name of the directory where an extension is installed. You can either install the extension per-user in `~/.local/share/gnome-shell/extensions/uuid`, or machine-wide in `/usr/share/gnome-shell/extensions/uuid`.

The `uuid` identifier is globally-unique. When choosing it, remember that the `uuid` must possess the following properties to prevent certain attacks:

- » Your `uuid` must not contain Unicode characters.
- » Your `uuid` must not contain the `gnome.org` ending as it must not appear to be affiliated with the GNOME Project.
- » Your `uuid` must contain only alphanumerical characters, the period (`.`), the at symbol (`@`), and the underscore (`_`).



Important

Before deploying third-party GNOME Shell extensions on Red Hat Enterprise Linux, make sure to read the following document to learn about the Red Hat support policy for third-party software:

- » [How does Red Hat Global Support Services handle third-party software, drivers, and/or uncertified hardware/hypervisors?](#)

To view installed extensions, you can use **Looking Glass**, GNOME Shell's integrated debugger and inspector tool.

Procedure 11.1. View installed extensions

1. Press **Alt+F2**.
2. Type in **lg** and press **Enter** to open **Looking Glass**.

3. On the top bar of **Looking Glass**, click **Extensions** to open the list of installed extensions.

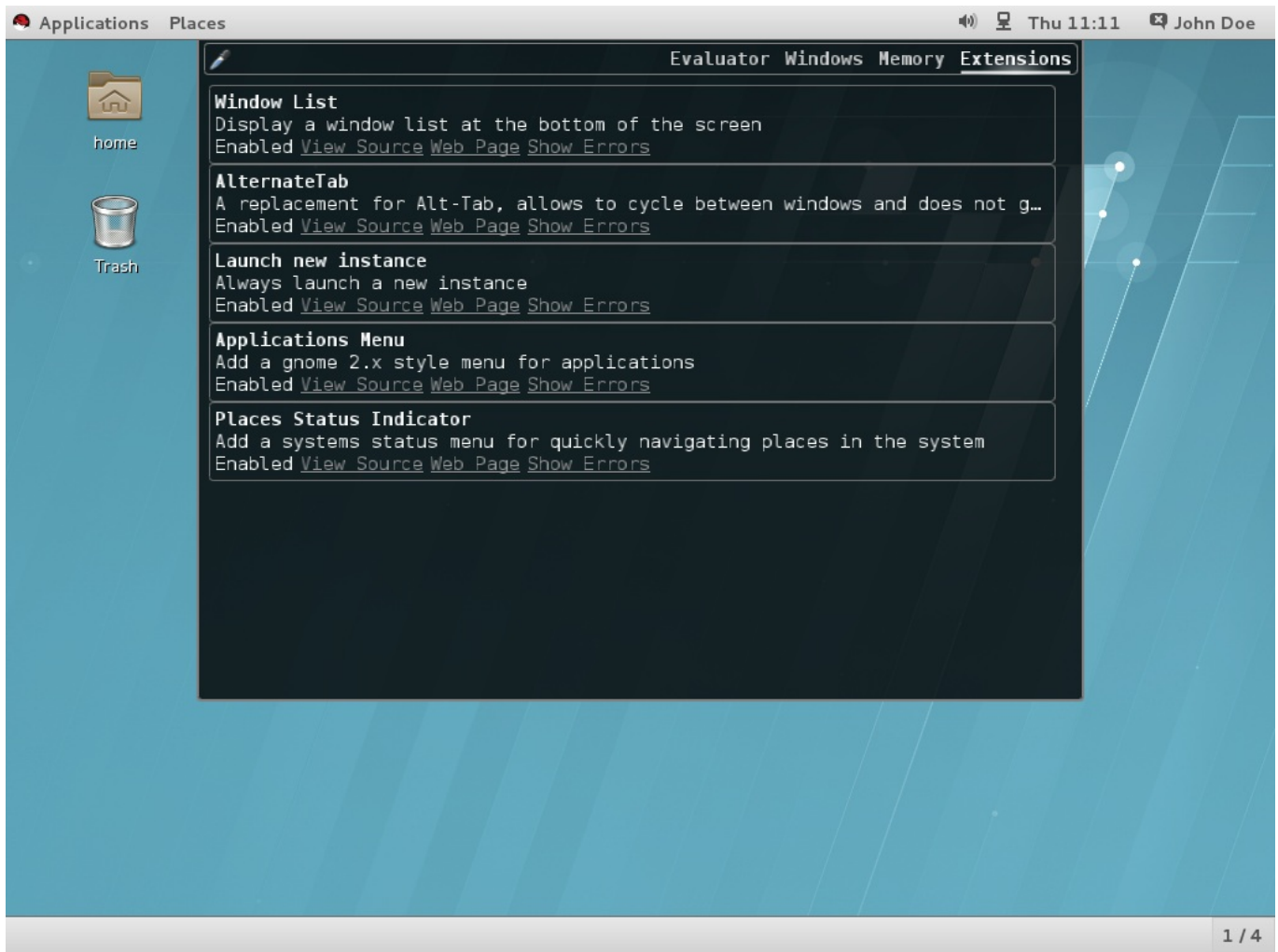


Figure 11.1. Viewing Installed extensions via Looking Glass

11.2. Enabling Machine-wide Extensions

To make extensions available to all users on the system, install them in the `/usr/share/gnome-shell/extensions` directory. Note that newly-installed machine-wide extensions are disabled by default. To enable the extensions for all users, you need to set the `org.gnome.shell.enabled-extensions` key.

Procedure 11.2. Enabling machine-wide extensions

1. Create a **local** database file for machine-wide settings in `/etc/dconf/db/local.d/00-extensions`:

```
[org/gnome/shell]
# List all extensions that you want to have enabled for all users
enabled-extensions=['myextension1@myname.example.com',
'myextension2@myname.example.com']
```

The **enabled-extensions** key specifies the enabled extensions using the extensions' uuid (`myextension1@myname.example.com` and `myextension2@myname.example.com`).

2. Update the system databases:

```
# dconf update
```

- Users must log out and back in again before the system-wide settings take effect.

11.3. Locking Down Enabled Extensions

In GNOME Shell, you can prevent the user from enabling or disabling extensions by locking down the `org.gnome.shell.enabled-extensions` and `org.gnome.shell.development-tools` keys.

Locking down the `org.gnome.shell.development-tools` key ensures that the user cannot use GNOME Shell's integrated debugger and inspector tool (**Looking Glass**) to disable any mandatory extensions.

Procedure 11.3. Locking down enabled extensions

- Create a `local` database file for machine-wide settings in `/etc/dconf/db/local.d/00-extensions`:

```
[org/gnome/shell]
# List all extensions that you want to have enabled for all users
enabled-extensions=['myextension1@myname.example.com',
'myextension2@myname.example.com']
# Disable access to Looking Glass
development-tools=false
```

The `enabled-extensions` key specifies the enabled extensions using the extensions' uuid (`myextension1@myname.example.com` and `myextension2@myname.example.com`).

The `development-tools` key is set to false to disable access to **Looking Glass**.

- Override the user's setting and prevent the user from changing it in `/etc/dconf/db/local.d/locks/extensions`:

```
# Lock the list of mandatory extensions and access to Looking Glass
/org/gnome/shell/enabled-extensions
/org/gnome/shell/development-tools
```

- Update the system databases:

```
# dconf update
```

- Users must log out and back in again before the system-wide settings take effect.

After locking down the `org.gnome.shell.enabled-extensions` and `org.gnome.shell.development-tools` keys, any extensions installed in `~/.local/share/gnome-shell/extensions` or `/usr/share/gnome-shell/extensions` that are not listed in the `org.gnome.shell.enabled-extensions` key will not be loaded by GNOME Shell, thus preventing the user from using them.

11.4. Setting Up Mandatory Extensions

In GNOME Shell, you can provide a set of extensions that the user has to use. To do so, install the extensions in the `/usr/share/gnome-shell/extensions` directory and then lock down the `org.gnome.shell.enabled-extensions` and `org.gnome.shell.development-tools` keys.

Locking down the `org.gnome.shell.development-tools` key ensures that the user cannot use GNOME Shell's integrated debugger and inspector tool (**Looking Glass**) to disable any mandatory extensions.

Procedure 11.4. Setting up mandatory extensions

1. Create a **local** database file for machine-wide settings in `/etc/dconf/db/local.d/00-extensions-mandatory`:

```
[org/gnome/shell]
# List all mandatory extensions
enabled-extensions=['myextension1@myname.example.com',
'myextension2@myname.example.com']
# Disable access to Looking Glass
development-tools=false
```

The **enabled-extensions** key specifies the enabled extensions using the extensions' uuid (*myextension1@myname.example.com* and *myextension2@myname.example.com*).

The **development-tools** key is set to false to disable access to **Looking Glass**.

2. Override the user's setting and prevent the user from changing it in `/etc/dconf/db/local.d/locks/extensions-mandatory`:

```
# Lock the list of mandatory extensions and access to Looking Glass
/org/gnome/shell/enabled-extensions
/org/gnome/shell/development-tools
```

3. Update the system databases:

```
# dconf update
```

4. Users must log out and back in again before the system-wide settings take effect.

Chapter 12. Integrating Applications

When integrating an application with the GNOME Desktop, the system administrator usually performs tasks related to customizing the **Applications** menu structure, and MIME types, such as:

- Add or modify a menu item for the application, or customize the **Applications** menu structure by creating or modifying submenus. See [Section 12.1, “Customizing Menus”](#) for more information on menu customization.
- Customize the default favorite applications visible on the GNOME Shell *dash* in the **Activities Overview**. See [Section 12.2, “Customizing Default Favorite Applications”](#) for more information on how to do that.
- Add or modify a MIME type for the application, and associate the application with a specific MIME type. See [Section 12.3, “Configuring File Associations”](#) for more information on configuring MIME types.

12.1. Customizing Menus

The GNOME menu system is based on the *freedesktop.org Desktop Menu Specification* and consists of three major sets of configuration and data files:

Desktop Entry Files (.desktop)

The **.desktop** files provide data about each menu item such as its name, command to run, and its icon. The **.desktop** entry files also specify the location of the menu item in the menu hierarchy, and keywords used for application search in the **Activities Overview**.

The system **.desktop** files are located in the `/usr/share/applications/` directory. User-specific **.desktop** files are located in the `~/.local/share/applications/` directory.

The following is a sample **.desktop** file named `~/.local/share/applications/myapplication1.desktop`:

```
[Desktop Entry]
Type=Application
Name=My Application 1
Icon=myapplication1
Exec=myapplication1
Categories=Network;WebBrowser;
MimeType=application/x-newtype
```

The file above specifies the application's name (**My Application 1**), the application's icon (**myapplication1**), and the command to run the application (**myapplication1**). It also places the application in a specified category (**Network;WebBrowser;**), and associates the application with the **application/x-newtype** MIME type.

Menu Definition Files (.menu)

The **.menu** files are XML configuration files that specify the order, hierarchy, and merging of both menus and menu items.

The machine-wide `.menu` files are located in the `/etc/xdg/menus/` directory. User-specific `.menu` files are located in the `~/.config/menus/` directory and can be used to override the values specified in the machine-wide `.menu` files.

In particular, the `/etc/xdg/menus/applications.menu` file contains the definition of the **Applications** menu layout.

Directory Entry Files (`.directory`)

The `.directory` files provide data about each menu such as its name, and are located in the `/usr/share/desktop-directories/`.

Getting More Information

For more information describing the Desktop Entry Files, see the *Desktop Entry Specification* located at the freedesktop.org website:

➤ <http://freedesktop.org/wiki/Specifications/desktop-entry-spec>

For detailed information describing the implementation of the GNOME menus system, see the *Desktop Menu Specification* located at the freedesktop.org website:

➤ <http://standards.freedesktop.org/menu-spec/latest>

12.1.1. Removing a Menu Item for Individual Users

The **Applications** menu customization for a given user is by default stored in the `~/.config/menus/gnome-applications.menu` definition file. The location of that file can be overridden by setting the `$XDG_DATA_HOME` environment variable.

To override the **Applications** menu defaults, you first need to create a `gnome-applications.menu` file. Note that removing an item from the **Applications** menu and its submenus also removes it from the Applications view in the **Activities Overview**, thus preventing the user from searching for that item from within the **Activities Overview**.

Procedure 12.1. Example: Remove the Calculator menu item from the Accessories submenu

1. Consult the contents of the `/usr/share/applications/` directory and determine a `.desktop` file that corresponds to the menu item you want to remove:

```
$ grep -r "Name=Calculator" /usr/share/applications/
/usr/share/applications/gcalctool.desktop:Name=Calculator
```

As shown above, the **Calculator** menu item corresponds to the `/usr/share/applications/gcalctool.desktop` file.

2. Create a `~/.config/menus/gnome-applications.menu` file:

```
<!DOCTYPE Menu PUBLIC "-//freedesktop//DTD Menu 1.0//EN"
"http://www.freedesktop.org/standards/menu-spec/1.0/menu.dtd">

<Menu>
  <Name>Applications</Name>
  <MergeFile type="parent">/etc/xdg/menus/gnome-
applications.menu</MergeFile>
```

```

<!-- Removes the Calculator from the Accessories submenu -->
  <Menu>
    <Name>Accessories</Name>
    <Exclude>
      <Filename>gcalctool.desktop</Filename>
    </Exclude>
  </Menu>
<!-- END of Calculator removal content -->

</Menu>

```

As shown above, the file contains a **<Menu>** section that specifies the name of the submenu (*Accessories*), the name of the **.desktop** file (*gcalctool.desktop*), and includes the **<Exclude>** element.

12.1.2. Removing a Menu Item for All Users

The **Applications** menu customization for all users is by default stored in the `/etc/xdg/menus/applications.menu` definition file. The location of that file can be overridden by setting the `$XDG_CONFIG_DIRS` environment variable.

To override the **Applications** menu defaults, you need to edit that **.menu** file. Note that removing an item from the **Applications** menu and its submenus also removes it from the Applications view in the **Activities Overview**, thus preventing the user from searching for that item from within the **Activities Overview**.

Procedure 12.2. Example: Remove the Calculator menu item from the Accessories submenu

1. Consult the contents of the `/usr/share/applications/` directory and determine a **.desktop** file that corresponds to the menu item you want to remove:

```

$ grep -r "Name=Calculator" /usr/share/applications/
/usr/share/applications/gcalctool.desktop:Name=Calculator

```

As shown above, the **Calculator** menu item corresponds to the `/usr/share/applications/gcalctool.desktop` file.

2. Edit the `/etc/xdg/menus/applications.menu` file and add a new **<Menu>** section before the final **</Menu>** tag at the end of that **.menu** file using the **<Exclude>** element as shown below:

```

<!-- Removes the Calculator from the Accessories submenu -->

  <Menu>
    <Name>Accessories</Name>
    <Exclude>
      <Filename>gcalctool.desktop</Filename>
    </Exclude>
  </Menu>

<!-- END of Calculator removal content -->

</Menu> <!-- End Applications -->

```

12.1.3. Removing a Submenu for Individual Users

The **Applications** menu customization for a given user is by default stored in the `~/.config/menus/gnome-applications.menu` definition file. The location of that file can be overridden by setting the `$XDG_DATA_HOME` environment variable.

To override the **Applications** menu defaults, you first need to create a `gnome-applications.menu` file. Note that removing a submenu from the **Applications** menu also removes all menu items contained within that submenu from the Applications view in the **Activities Overview**, thus preventing the user from searching for those items from within the **Activities Overview**.

Example 12.1. Remove the System Tools submenu from the Applications menu

Create a `~/.config/menus/gnome-applications.menu` file:

```

<!DOCTYPE Menu PUBLIC "-//freedesktop//DTD Menu 1.0//EN"
"http://www.freedesktop.org/standards/menu-spec/1.0/menu.dtd">

<Menu>
  <Name>Applications</Name>
  <MergeFile type="parent">/etc/xdg/menus/gnome-
applications.menu</MergeFile>

  <!-- Removes the System Tools submenu from the Applications menu-->

  <Menu>
    <Name>System Tools</Name>
    <Deleted/>
  </Menu>

  <!-- END of System Tools removal content -->

</Menu>

```

As shown above, the file contains a `<Menu>` section that specifies the name of the submenu (*System Tools*), and includes the `<Deleted/>` tag.

12.1.4. Removing a Submenu for All Users

The **Applications** menu customization for all users is by default stored in the `/etc/xdg/menus/applications.menu` definition file. The location of that file can be overridden by setting the `$XDG_CONFIG_DIRS` environment variable.

To override the **Applications** menu defaults, you need to edit that `.menu` file. Note that removing a submenu from the **Applications** menu also removes all menu items contained within that submenu from the Applications view in the **Activities Overview**, thus preventing the user from searching for those items from within the **Activities Overview**.

Example 12.2. Remove the System Tools submenu from the Applications menu

Edit a `/etc/xdg/menus/applications.menu` file and add a new `<Menu>` section before the final `</Menu>` tag at the end of that `.menu` file using the `<Deleted/>` element as shown below:

```

<!-- Removes the System Tools submenu from the Applications menu-->

  <Menu>
    <Name>System Tools</Name>
    <Deleted/>
  </Menu>

<!-- END of System Tools removal content -->

</Menu>

```

12.2. Customizing Default Favorite Applications

Favorite applications are those visible on the GNOME Shell *dash* in the **Activities Overview**. You can use **dconf** to set the favorite applications for an individual user, or to set the same favorite applications for all users.

12.2.1. Setting Different Favorite Applications for Individual Users

You can set the default favorite applications for an individual user by modifying their user database file found in `~/.config/dconf/user`. The following sample uses **dconf** to set **gedit**, **Terminal** and **Nautilus** as the default favorites for a user. The example code allows users to modify the list later, if they wish to do so.

Example 12.3. Contents of `/etc/dconf/profile`:

```

# This line allows the user to change the default favorites later
user-db:user

```

Example 12.4. Contents of `~/.config/dconf/user`:

```

# Set gedit, terminal and nautilus as default favorites
[org/gnome/shell]
favorite-apps = ['gedit.desktop', 'gnome-terminal.desktop',
'nautilus.desktop']

```



Note

You can also lock down the above settings to prevent users from changing them. See [Section 9.5.1, “Locking Down Specific Settings”](#) for more information.

12.2.2. Setting the Same Favorite Applications for All Users

In order to have the same favorites for all users, you must modify system database files using **dconf** keyfiles. The following sample edits the **dconf** profile and then create a keyfile to set the default favorite applications for all employees in the first floor of an organization.

Example 12.5. Contents of /etc/dconf/profile:

```
user-db:user

# This line defines a system database called first_floor
system-db:first_floor
```

**Note**

Settings from the **user** database file will take precedence over the settings in the **first_floor** database file, but locks introduced in the **first_floor** database file will take priority over those present in **user**. For more information about locks, see [Section 9.5.1, “Locking Down Specific Settings”](#).

Example 12.6. Contents of /etc/dconf/db/first_floor.d/00_floor1_settings:

```
# This sample sets gedit, terminal and nautilus as default favorites
# for all users in the first floor
[org/gnome/shell]
favorite-apps = ['gedit.desktop', 'gnome-terminal.desktop',
'nautilus.desktop']
```

Incorporate your changes into the system databases by running the **dconf update** command.

Users must log out and back in again before the system-wide settings take effect.

12.3. Configuring File Associations

12.3.1. What Are MIME Types?

In GNOME, MIME (*Multipurpose Internet Mail Extension*) types are used to identify the format of a file. The GNOME Desktop uses MIME types to:

- ✦ Determine which application should open a specific file format by default.
- ✦ Register other applications that can also open a specific file format.
- ✦ Provide a string describing the type of a file, for example, in a file properties dialog of the **Files** application.
- ✦ Provide an icon representing a specific file format, for example, in a file properties dialog of the **Files** application.

MIME type names follow a given format:

```
media-type/subtype-identifier
```

Example 12.7. MIME Types Format

`image/jpeg` is an example of a MIME type where `image` is the media type, and `jpeg` is the subtype identifier.

GNOME follows the *freedesktop.org Shared MIME Info* specification to determine:

- The machine-wide and user-specific location to store all MIME type specification files.
- How to register a MIME type so that the desktop environment knows which applications can be used to open a specific file format.
- How the user can change which applications should open what file formats.

12.3.1.1. What Is the MIME Database?

The MIME database is a collection of all MIME type specification files that GNOME uses to store information about known MIME types.

The most important part of the MIME database from the system administrator's point of view is the `/usr/share/mime/packages/` directory where the MIME type related files specifying information on known MIME types are stored. One example of such a file is `/usr/share/mime/packages/freedesktop.org.xml`, specifying information about the standard MIME types available on the system by default. That file is provided by the *shared-mime-info* package.

Getting More Information

For detailed information describing the MIME type system, see the *freedesktop.org Shared MIME Info specification* located at the [freedesktop.org](http://www.freedesktop.org) website:

<http://www.freedesktop.org/wiki/Specifications/shared-mime-info-spec/>

12.3.2. Adding a Custom MIME Type for All Users

To add a custom MIME type for all users on the system and register a default application for that MIME type, you need to create a new MIME type specification file in the `/usr/share/mime/packages/` directory and a `.desktop` file in the `/usr/share/applications/` directory.

Procedure 12.3. Adding a Custom `application/x-newtype` MIME Type for All Users

1. Create the `/usr/share/mime/packages/application-x-newtype.xml` file:

```
<?xml version="1.0" encoding="UTF-8"?>
<mime-info xmlns="http://www.freedesktop.org/standards/shared-mime-info">
  <mime-type type="application/x-newtype">
    <comment>new mime type</comment>
    <glob pattern="*.xyz"/>
  </mime-type>
</mime-info>
```


The sample `application-x-newtype.xml` file above defines a new MIME type `application/x-newtype` and assigns file names with the `.xyz` extension to that MIME type.

2. Create a new `.desktop` file named, for example, `myapplication1.desktop`, and place it in the `/usr/share/applications/` directory:

```
[Desktop Entry]
Type=Application
MimeType=application/x-newtype
Name=My Application 1
Exec=myapplication1
```

The sample `myapplication1.desktop` file above associates the `application/x-newtype` MIME type with an application named `My Application 1`, which is run by a command `myapplication1`.

3. As root, update the MIME database for your changes to take effect:

```
# update-mime-database /usr/share/mime
```

4. As root, update the application database:

```
# update-desktop-database /usr/share/applications
```

5. To verify that you have successfully associated `*.xyz` files with the `application/x-newtype` MIME type, first create an empty file, for example `test.xyz`:

```
$ touch test.xyz
```

Then run the `gvfs-info` command:

```
$ gvfs-info test.xyz | grep "standard::content-type"
standard::content-type: application/x-newtype
```

6. To verify that `myapplication1.desktop` has been correctly set as the default registered application for the `application/x-newtype` MIME type, run the `gvfs-mime --query` command:

```
$ gvfs-mime --query application/x-newtype
Default application for 'application/x-newtype':
myapplication1.desktop
Registered applications:
  myapplication1.desktop
Recommended applications:
  myapplication1.desktop
```

12.3.3. Adding a Custom MIME Type for Individual Users

To add a custom MIME type for individual users and register a default application for that MIME type, you need to create a new MIME type specification file in the `~/.local/share/mime/packages/` directory and a `.desktop` file in the `~/.local/share/applications/` directory.

Procedure 12.4. Adding a Custom `application/x-newtype` MIME Type for Individual Users

1. Create the `~/.local/share/mime/packages/application-x-newtype.xml` file:

```
<?xml version="1.0" encoding="UTF-8"?>
<mime-info xmlns="http://www.freedesktop.org/standards/shared-mime-info">
  <mime-type type="application/x-newtype">
    <comment>new mime type</comment>
    <glob pattern="*.xyz"/>
  </mime-type>
</mime-info>
```

The sample `application-x-newtype.xml` file above defines a new MIME type `application/x-newtype` and assigns file names with the `.xyz` extension to that MIME type.

2. Create a new `.desktop` file named, for example, `myapplication1.desktop`, and place it in the `~/.local/share/applications/` directory:

```
[Desktop Entry]
Type=Application
MimeType=application/x-newtype
Name=My Application 1
Exec=myapplication1
```

The sample `myapplication1.desktop` file above associates the `application/x-newtype` MIME type with an application named **My Application 1**, which is run by a command `myapplication1`.

3. Update the MIME database for your changes to take effect:

```
$ update-mime-database ~/.local/share/mime
```

4. Update the application database:

```
$ update-desktop-database ~/.local/share/applications
```

5. To verify that you have successfully associated `*.xyz` files with the `application/x-newtype` MIME type, first create an empty file, for example `test.xyz`:

```
$ touch test.xyz
```

Then run the `gvfs-info` command:

```
$ gvfs-info test.xyz | grep "standard::content-type"
standard::content-type: application/x-newtype
```

6. To verify that `myapplication1.desktop` has been correctly set as the default registered application for the `application/x-newtype` MIME type, run the `gvfs-mime --query` command:

```
$ gvfs-mime --query application/x-newtype
```

```
Default application for 'application/x-newtype':
myapplication1.desktop
Registered applications:
  myapplication1.desktop
Recommended applications:
  myapplication1.desktop
```

12.3.4. Overriding the Default Registered Application for All Users

The `/usr/share/applications/defaults.list` file specifies which application is registered to open specific MIME types by default. To override the system defaults for all users on the system, you need to create a `/usr/share/applications/mimeapps.list` file with a list of MIME types for which you want to override the default registered application.

Procedure 12.5. Overriding the Default Registered Application for All Users

1. Consult the `/usr/share/applications/defaults.list` file to determine the MIME types for which you want to change the default registered application. For example, the following sample of the `defaults.list` file specifies the default registered application for the `text/html` and `application/xhtml+xml` MIME types:

```
[Default Applications]
text/html=firefox.desktop
application/xhtml+xml=firefox.desktop
```

The default application (**Firefox**) is defined by specifying its corresponding `.desktop` file (**firefox.desktop**). The default location for other applications' `.desktop` files is `/usr/share/applications/`.

2. Create the `/usr/share/applications/mimeapps.list` file. In the file, specify the MIME types and their corresponding default registered applications:

```
[Default Applications]
text/html=myapplication1.desktop
application/xhtml+xml=myapplication2.desktop

[Added Associations]
text/html=myapplication1.desktop;
application/xhtml+xml=myapplication2.desktop;
```

This sets the default registered application for the `text/html` MIME type to **myapplication1.desktop**, and the default registered application for the `application/xhtml+xml` MIME type to **myapplication2.desktop**.

For these settings to function properly, ensure that both the **myapplication1.desktop** and **myapplication2.desktop** files are placed in the `/usr/share/applications/` directory.

3. You can use the `gvfs-mime --query` command to verify that the default registered application has been set correctly:

```
$ gvfs-mime --query text/html
Default application for 'text/html': myapplication1.desktop
Registered applications:
  myapplication1.desktop
```

```
firefox.desktop
Recommended applications:
myapplication1.desktop
firefox.desktop
```

12.3.5. Overriding the Default Registered Application for Individual Users

The `/usr/share/applications/defaults.list` file specifies which application is registered to open specific MIME types by default. To override the system defaults for individual users, you need to create a `~/.local/share/applications/mimeapps.list` file with a list of MIME types for which you want to override the default registered application.

Procedure 12.6. Overriding the Default Registered Application for Individual Users

1. Consult the `/usr/share/applications/defaults.list` file to determine the MIME types for which you want to change the default registered application. For example, the following sample of the `defaults.list` file specifies the default registered application for the `text/html` and `application/xhtml+xml` MIME types:

```
[Default Applications]
text/html=firefox.desktop
application/xhtml+xml=firefox.desktop
```

The default application (**Firefox**) is defined by specifying its corresponding `.desktop` file (**firefox.desktop**). The system default location for other applications' `.desktop` files is `/usr/share/applications/`. Individual users' `.desktop` files can be stored in `~/.local/share/applications/`.

2. Create the `~/.local/share/applications/mimeapps.list` file. In the file, specify the MIME types and their corresponding default registered applications:

```
[Default Applications]
text/html=myapplication1.desktop
application/xhtml+xml=myapplication2.desktop

[Added Associations]
text/html=myapplication1.desktop;
application/xhtml+xml=myapplication2.desktop;
```

This sets the default registered application for the `text/html` MIME type to **myapplication1.desktop**, and the default registered application for the `application/xhtml+xml` MIME type to **myapplication2.desktop**.

For these settings to function properly, ensure that both the **myapplication1.desktop** and **myapplication2.desktop** files are placed in the `/usr/share/applications/` directory.

3. You can use the `gvfs-mime --query` command to verify that the default registered application has been set correctly:

```
$ gvfs-mime --query text/html
Default application for 'text/html': myapplication1.desktop
Registered applications:
  myapplication1.desktop
```

```
firefox.desktop  
Recommended applications:  
myapplication1.desktop  
firefox.desktop
```

Chapter 13. Customizing GNOME Desktop Features

This chapter mentions three key desktop features. After reading, you will know how to quickly terminate the X server by default for all users, how to enable the **Compose** key or how to disable command line access for the users.

To make sure the changes you have made take effect, you need to update the **dconf** utility. The users will experience the difference when they log out and log in again.

13.1. Allowing and Disallowing Online Accounts

The **GNOME Online Accounts** (GOA) are used for setting personal network accounts which are then automatically integrated with the GNOME Desktop and applications. The user can add their online accounts, such as Google, Facebook, Flickr, ownCloud, etc. via the **Online Accounts** application.

As a system administrator, you can

- » enable all online accounts;
- » selectively enable a few online accounts;
- » disable all online accounts.

Procedure 13.1. Configuring Online Accounts

1. If you do not have the *gnome-online-accounts* package on your system, install it by running the following command as root:

```
# yum install gnome-online-accounts
```

2. Create a keyfile for the local database in `/etc/dconf/db/local.d/goa`, which contains the following configuration:

- » For selectively enabling a few providers only:

```
[org/gnome/online-accounts]
whitelisted-providers= ['google', 'facebook']
```

- » For disabling all providers:

```
[org/gnome/online-accounts]
whitelisted-providers= []
```

- » For allowing all available providers:

```
[org/gnome/online-accounts]
whitelisted-providers= ['all']
```

3. Lock down the settings to prevent users from overriding them.
 - a. If it does not exist, create a new directory named `/etc/dconf/db/local.d/locks/`.
 - b. Create a new file in `/etc/dconf/db/local.d/locks/goa` with the following

contents:

```
# Prevent users from changing values for the following key:
/org/gnome/online-accounts
```

4. Update the system databases for the changes to take effect:

```
# dconf update
```

5. Users must log out and back in again before the system-wide settings take effect.

13.2. Enabling the **Ctrl+Alt+Backspace** Shortcut

The **Ctrl+Alt+Backspace** shortcut key combination is used for terminating the X server. You might want to terminate the X server especially when:

- » a program caused the X server to stop working.
- » you need to switch from your logged-in session quickly.
- » you have launched a program that failed.
- » you cannot operate in the current session for various reason.
- » your screen freezes.

To enable the **Ctrl+Alt+Backspace** shortcut to forcibly terminate the X server by default for all users, you need to set the **org.gnome.desktop.input-sources.xkb-options** GSettings key. (For more information on GSettings keys, see [Section 9.6, “GSettings Keys Properties”](#).)

Procedure 13.2. Enabling the Ctrl-Alt-Backspace Shortcut

1. Create a **local** database for machine-wide settings in **/etc/dconf/db/local.d/00-input-sources**:

```
[org/gnome/desktop/input-sources]
# Enable Ctrl-Alt-Backspace for all users
xkb-options=['terminate:ctrl_alt_bksp']
```

2. Override the user's setting and prevent the user from changing it in **/etc/dconf/db/local.d/locks/input-sources**:

```
# Lock the list of enabled XKB options
/org/gnome/desktop/input-sources/xkb-options
```

3. Update the system databases for the changes to take effect:

```
# dconf update
```

4. Users must log out and back in again before the system-wide settings take effect.

The **Ctrl+Alt+Backspace** key combination is now enabled. All users can terminate the X server quickly and easily and doing so bring themselves back to the login prompt.

13.3. Enabling the Compose Key

The **Compose key** is a feature that enables you to type special symbols or characters not found on your keyboard. In GNOME Desktop, you can define one of the existing keys on your keyboard as the **Compose key**. The **Compose key** is used in combination with other keys, known as Compose key sequences, to enter special characters you type frequently.

Example 13.1. Using Compose Key

If you press and release the **Compose key**, then type AE (in capitals), you will get "Æ". If you type the letters in lower case, you get "æ".

To enable the **Compose key** and configure a certain key on your keyboard as the **Compose key**, set the `org.gnome.desktop.input-sources.xkb-options` GSettings key. That way, the setting will be enabled by default for all users on your system. (For more information on GSettings keys, see [Section 9.6, “GSettings Keys Properties”](#).)

Procedure 13.3. Setting the Right Alt Key as the Compose Key

1. Create a **local** database for machine-wide settings in `/etc/dconf/db/local.d/00-input-sources`:

```
[org/gnome/desktop/input-sources]
# Set the Right Alt key as the Compose key and enable it
xkb-options=['compose:raAlt']
```

If you want to set a different key than Right **Alt**, replace `raAlt` with the name of that key as specified in the `xkeyboard-config(7)` man page, section *Compose key position*.

2. Override the user's setting and prevent the user from changing it in `/etc/dconf/db/local.d/locks/input-sources`:

```
# Lock the list of enabled XKB options
/org/gnome/desktop/input-sources/xkb-options
```

3. Update the system databases for the changes to take effect:

```
# dconf update
```

4. Users must log out and back in again before the system-wide settings take effect.

Now, you can start using the Right **Alt** key as the **Compose key**. Just press and release the **Compose key** and then type the key combination to get the specific symbol.



Note

If you, as a system administrator, set the lock on after editing the local database, users will not be able to add other xkb options. The lock prevents users from setting a key combination like **Alt+Shift** to switch keyboard layouts.

13.4. Disabling Command Line Access

To completely disable command-line access, you need to make configuration changes in a number of different contexts. In the steps that follow, you do not remove the user's permissions to run a command line, but rather remove the ways that the user could access command line.

- ✦ Set the `org.gnome.desktop.lockdown.disable-command-line` GSettings key, which prevents the user from accessing the terminal or specifying a command line to be executed (the **Alt+F2** command prompt).
- ✦ Disable switching to virtual terminals (VTs) with the `Ctrl+Alt+function key` shortcuts by modifying the X server configuration.
- ✦ Remove **Terminal** and any other application that provides access to the terminal from the **Applications** menu and **Activities Overview** in GNOME Shell. This is done by removing menu items for those applications. For detailed information on how to remove a menu item, see [Section 12.1.2, “Removing a Menu Item for All Users”](#).

13.4.1. Setting the `org.gnome.desktop.lockdown.disable-command-line` Key

1. Create a `local` database for machine-wide settings in `/etc/dconf/db/local.d/00-lockdown`:

```
[org/gnome/desktop/lockdown]
# Disable command-line access
disable-command-line=true
```

2. Override the user's setting and prevent the user from changing it in `/etc/dconf/db/local.d/locks/lockdown`:

```
# Lock the disabled command-line access
/org/gnome/desktop/lockdown
```

3. Update the system databases:

```
# dconf update
```

4. Users must log out and back in again before the system-wide settings take effect.

13.4.2. Disabling Virtual Terminal Switching

Users can normally use the `Ctrl+Alt+function key` shortcuts (for example `Ctrl+Alt+F2`) to switch from the GNOME Desktop and X server to a virtual terminal. You can disable access to all virtual terminals by adding a `DontVTSwitch` option to the `ServerFlags` section in an X configuration file in the `/etc/X11/xorg.conf.d/` directory.

Procedure 13.4. Disabling Access to Virtual Terminals

1. Create or edit an X configuration file in the `/etc/X11/xorg.conf.d/` directory:



Note

By convention, these host-specific configuration files' names start with two digits and a hyphen and always have the .conf suffix. Thus, the following file's name can be `/etc/X11/xorg.conf.d/10-xorg.conf`.

```
Section "Serverflags"
```

```
Option "DontVTSwitch" "yes"
```

```
EndSection
```

- Restart the X server for your changes to take effect.

13.5. Locking Down Printing

You can disable the print dialog from being shown to users. This can be useful if you are giving temporary access to a user or you do not want the user to print to network printers.



Important

This feature will only work in applications which support it. Not all GNOME and third party applications have this feature enabled. These changes will have no effect on applications which do not support this feature.

You prevent applications from printing by locking down the `org.gnome.desktop.lockdown.disable-printing` key. Follow the procedure.

Procedure 13.5. Locking Down the `org.gnome.desktop.lockdown.disable-printing` key

- Create the user profile if it already does not exist (`/etc/dconf/profile/user`):

```
user-db:user
system-db:local
```

- Create a `local` database for machine-wide settings in `etc/dconf/db/local.d/00-lockdown`:

```
[org/gnome/desktop/lockdown]

# Prevent applications from printing
disable-printing=true
```

- Override the user's setting and prevent the user from changing it in `/etc/dconf/db/local.d/locks/lockdown`:

```
# List the keys used to configure lockdown
org.gnome.desktop.lockdown.disable-printing
```

- Update the system databases by running

```
# dconf update
```

Having followed these steps, applications supporting this lockdown key will disable printing. Among such applications there are **Evolution**, **Evince**, **Eye of GNOME**, **Epiphany**, and **Gedit**.

13.6. Locking File Saving on Disk

You can disable the **Save** and **Save As** dialogs. This can be useful if you are giving temporary access to a user or you do not want the user to save files to the computer.



Important

This feature will only work in applications which support it. Not all GNOME and third party applications have this feature enabled. These changes will have no effect on applications which do not support this feature.

You prevent applications from file saving by locking down the **org.gnome.desktop.lockdown.disable-save-to-disk** key. Follow the procedure:

Procedure 13.6. Locking Down the org.gnome.desktop.lockdown.disable-save-to-disk key

- Create the **user** profile in **/etc/dconf/profile/user** unless it already exists:

```
user-db:user
system-db:local
```

- Create a **local** database for machine-wide settings in the **/etc/dconf/db/local.d/00-lockdown** file.

```
[org/gnome/desktop/lockdown]

# Prevent the user from saving files on disk
disable-save-to-disk=true
```

- Override the user's setting and prevent the user from changing it in **/etc/dconf/db/local.d/locks/lockdown**:

```
# Lock this key to disable saving files on disk
org.gnome.desktop.lockdown.disable-save-to-disk
```

- Update the system databases by running

```
# dconf update
```

Having followed these steps, applications supporting this lockdown key, for example **Videos**, **Image Viewer**, **Evolution**, **Document Viewer**, or **GNOME Shell** will disable their "Save As" dialogs.

13.7. Locking Repartitioning

polkit enables you to set permissions for individual operations. For **udisks2**, the utility for disk management services, the configuration is located at **/usr/share/polkit-1/actions/org.freedesktop.udisks2.policy**. This file contains a set of actions and default values, which can be overridden by system administrator.



Important

Remember that **polkit** configuration stored in **/etc** overrides the configuration shipped by packages in **/usr/share/**.

Procedure 13.7. To prevent users from changing disks settings

1. Create a file with the same content as in **/usr/share/polkit-1/actions/org.freedesktop.udisks2.policy**.

```
cp /usr/share/polkit-1/actions/org.freedesktop.udisks2.policy
/etc/share/polkit-1/actions/org.freedesktop.udisks2.policy
```

Do not change the **/usr/share/polkit-1/actions/org.freedesktop.udisks2.policy** file, your changes will be overwritten by the next package update.

2. Delete the action you do not need and add the following lines to the **/etc/polkit-1/actions/org.freedesktop.udisks2.policy** file:

```
<action id="org.freedesktop.udisks2.modify-device">
  <message>Authentication is required to modify the disks
settings</message>
  <defaults>
    <allow_any>no</allow_any>
    <allow_inactive>no</allow_inactive>
    <allow_active>yes</allow_active>
  </defaults>
</action>
```

Replace **no** by **auth_admin** if you want to ensure only the root user is able to carry out the action.

3. Save the changes.

When the user tries to change the disks settings, the following message is returned:

```
Authentication is required to modify the disks settings
```

Chapter 14. Session Management

14.1. What Is GDM?

The **GNOME Display Manager (GDM)** is a graphical login program running in the background that runs and manages the X servers for both local and remote logins.

GDM is a replacement for **XDM**, the X Display Manager. However, **GDM** is not derived from **XDM** and does not contain any original **XDM** code. In addition, there is no support for a graphical configuration tool in **GDM**, so editing the `/etc/gdm/custom.conf` configuration file is necessary to change the **GDM** settings.

14.1.1. Restarting GDM

When you make changes to the system configuration such as setting up the login screen banner message, login screen logo, or login screen background, you need to restart **GDM** for your changes to take effect.



Warning

Keep in mind that restarting the service forcibly interrupts any currently running GNOME session of any desktop user who is logged in. This can result in users losing unsaved data.

To restart the **GDM** service, run the following command:

```
# systemctl restart gdm.service
```

For more information about managing services on Red Hat Enterprise Linux 7, see the *Red Hat Enterprise Linux 7 System Administrator's Guide*, available from http://access.redhat.com/site/documentation/Red_Hat_Enterprise_Linux/.

14.2. Authentication

14.2.1. Using Enterprise Credentials to Log into GNOME

If your network has an Active Directory or IPA domain available, and you have a domain account, you can use your domain credentials to log into GNOME.

If the machine has been successfully configured for domain accounts, users can log into GNOME using their accounts. At the login prompt, type the domain user name followed by an @ sign, and then your domain name. For example, if your domain name is `example.com` and the user name is `User`, type:

```
User@example.com
```

In cases where the machine is already configured for domain accounts, you should see a helpful hint describing the login format.

14.2.1.1. Choosing to Use Enterprise Credentials During Welcome Screens

If you have not yet configured the machine for enterprise credentials, you can do so at the **Welcome** screens that are part of the **GNOME Initial Setup** program.

Procedure 14.1. Configuring Enterprise Credentials

1. At the **Login** welcome screen, choose **Use Enterprise Login**.
2. Type the name of your domain in the **Domain** field if it is not already prefilled.
3. Type your domain account user and password in the relevant fields.
4. Click **Next**.

Depending on how the domain is configured, a prompt may show up asking for the domain administrator's name and password in order to proceed.

14.2.1.2. Changing to Use Enterprise Credentials to Log into GNOME

If you have already completed initial setup, and wish to start a domain account to log into GNOME, then you can accomplish this from the Users panel in the GNOME Settings.

Procedure 14.2. Configuring Enterprise Credentials

1. Click your name on the top bar and select **Settings** from the menu.
2. From the list of items, select **Users**.
3. Click the **Unlock** button and type the computer administrator's password.
4. Click the **[+]** button in the lower left of the window.
5. Select the **Enterprise Login** pane.
6. Enter the domain, user, and password for your Enterprise account, and click **Add**.

Depending on how your domain is configured, a prompt may show up asking for the domain administrator's name and password in order to proceed.

14.2.1.3. Troubleshooting and Advanced Setup

The **realm** command and its various subcommands can be used to troubleshoot the enterprise login feature. For example, to see whether the machine has been configured for enterprise logins, run the following command:

```
$ realm list
```

Network administrators are encouraged to pre-join workstations to a relevant domain. This can be done using the kickstart **realm join** command, or running **realm join** in an automated fashion from a script.

Getting More Information

[Red Hat Enterprise Linux 7 Windows Integration Guide](#) – The *Windows Integration Guide* for Red Hat Enterprise Linux 7 provides more detailed information about using **realmd** to connect to an Active Directory domain.

14.2.2. Enabling Smart Card Authentication

To allow users to log in using their smart cards, use the **system-config-authentication** tool to enable smart card authentication. The tool is provided by the *authconfig-gtk* package.

To learn more about smart card authentication and the **system-config-authentication** tool, see the *Red Hat Enterprise Linux 7 System-Level Authentication Guide*, available from http://access.redhat.com/site/documentation/Red_Hat_Enterprise_Linux/.

14.2.3. Enabling Fingerprint Authentication

To allow users to log in using their enrolled fingerprints, use the **system-config-authentication** tool to enable fingerprint authentication. The tool is provided by the *authconfig-gtk* package.

To learn more about fingerprint authentication and the **system-config-authentication** tool, see the *Red Hat Enterprise Linux 7 System-Level Authentication Guide*, available from http://access.redhat.com/site/documentation/Red_Hat_Enterprise_Linux/.

14.3. User Sessions

14.3.1. What Are Typical Processes in User Sessions?

In a stock GNOME session, programs called *daemons* run on the system as background processes. You should find the following daemons running by default:

dbus-daemon

The **dbus-daemon** provides a message bus daemon which programs can use to exchange messages with one another. **dbus-daemon** is implemented with the D-Bus library which provides one-to-one communication between any two applications.

For extended information, see the **dbus-daemon(1)** man page.

gnome-keyring-daemon

Credentials such as user name and password for various programs and websites are stored securely using the **gnome-keyring-daemon**. This information is written into an encrypted file called the keyring file and saved in the user's home directory.

For extended information, see the **gnome-keyring-daemon(1)** man page.

gnome-session

The **gnome-session** program is responsible for running the GNOME Desktop environment with help of a display manager, such as **GDM**. The default session for the user is set at the time of system installation by the system administrator. **gnome-session** typically loads the last session that ran successfully on the system.

For extended information, see the **gnome-session(1)** man page.

gnome-settings-daemon

The **gnome-settings-daemon** handles settings for a GNOME session and for all programs that are run within the session.

For extended information, see the **gnome-settings-daemon(1)** man page.

gnome-shell

gnome-shell provides the core user interface functionality for GNOME, such as

gnome-shell provides the core user interface functionality for GNOME, such as launching programs, browsing directories, viewing files and so on.

For extended information, see the **gnome-shell(1)** man page.

pulseaudio

PulseAudio is a sound server for Red Hat Enterprise Linux that lets programs output audio via the **Pulseaudio** daemon.

For extended information, see the **pulseaudio(1)** man page.

Depending on the user's setup, you may also see some of the following, among others:

- ✧ **dconf-service**
- ✧ **ibus**
- ✧ **at-spi2-dbus-launcher**
- ✧ **at-spi2-registryd**
- ✧ **gnome-shell-calendar-server**
- ✧ **goa-daemon**
- ✧ **gsd-printer**
- ✧ various **Evolution** factory processes
- ✧ various **GVFS** processes

14.3.2. Configuring a User Default Session

The default session is retrieved from a program called **AccountsService**. **AccountsService** stores this information in the `/var/lib/AccountsService/users/` directory.



Note

In GNOME 2, the `.dmrc` file in the user home directory was used to create default sessions. This `.dmrc` file is no longer used.

Procedure 14.3. Specifying a Default Session for a User

1. Make sure that you have the `gnome-session-xsession` package installed by running the following command:

```
# yum install gnome-session-xsession
```

2. Navigate to the `/usr/share/xsessions` directory where you can find `.desktop` files for each of the available sessions. Consult the contents of the `.desktop` files to determine the session you want to use.
3. To specify a default session for a user, update the user's **account service** in the `/var/lib/AccountsService/users/username` file:


```
[User]
Language=
XSession=gnome
```

In this sample, GNOME has been set as the default session, using the `/usr/share/xsessions/gnome.desktop` file. Note that the system default in Red Hat Enterprise Linux 7 is GNOME Classic (the `/usr/share/xsessions/gnome-classic.desktop` file).

After specifying a default session for the user, that session will be used the next time the user logs in, unless the user selects a different session from the login screen.

14.3.3. Creating a Custom Session

To create your own session with customized configuration, follow these steps:

1. Create a `.desktop` file in `/etc/X11/sessions/new-session.desktop`. Make sure that the file specifies the following entries:

```
[Desktop Entry]
Encoding=UTF-8
Type=Application
Name=Custom Session
Comment=This is our custom session
Exec=gnome-session --session=new-session
```

The **Exec** entry specifies the command, possibly with arguments, to execute. You can run the custom session with the `gnome-session --session=new-session` command.

For more information on the parameters that you can use with `gnome-session`, see the `gnome-session(1)` man page.

2. Create a custom session file in `/usr/share/gnome-session/sessions/new-session.session` where you can specify the name and required components for the session:

```
[GNOME Session]
Name=Custom Session
RequiredComponents=gnome-shell-classic;gnome-settings-daemon;
```

Note that any item that you specify in **RequiredComponents** needs to have its corresponding `.desktop` file in `/usr/share/applications/`.

After configuring the custom session files, the new session will be available in the session list on the **GDM** login screen.

14.3.4. Viewing User Session Logs

If you want to find more information about a problem in a user session, you can view the **systemd** journal. Because Red Hat Enterprise Linux 7 is a **systemd**-based system, the user session log data is stored directly in the **systemd** journal in a binary format.



Note

In Red Hat Enterprise Linux 6, the user session log data was stored in the `~/.xsession-errors` file, which is no longer used.

Procedure 14.4. Viewing User Session Logs

1. Determine your user ID (**uid**) by running the following command:

```
$ id --user
1000
```

2. View the journal logs for the user ID determined above:

```
$ journalctl _UID=1000
```

Getting More Information

The `journalctl(1)` man page provides more information on the **systemd** journal usage.

For further information about using the **systemd** journal on Red Hat Enterprise Linux 7, see the *Red Hat Enterprise Linux 7 System Administrator's Guide*, available from http://access.redhat.com/site/documentation/Red_Hat_Enterprise_Linux/.

14.3.5. Adding an Autostart Application for All Users

To start an application automatically when the user logs in, you need to create a `.desktop` file for that application in the `/etc/xdg/autostart/` directory.

To manage autostart (startup) applications for individual users, use the **gnome-session-properties** application.

Procedure 14.5. Adding an Autostart (Startup) Application for All Users

1. Create a `.desktop` file in the `/etc/xdg/autostart/` directory:

```
[Desktop Entry]
Type=Application
Name=Files
Exec=nautilus -n
OnlyShowIn=GNOME;
AutostartCondition=GSettings org.gnome.desktop.background show-
desktop-icons
```

2. Replace `Files` with the name of the application.
3. Replace `nautilus -n` with the command you wish to use to run the application.
4. You can use the **AutostartCondition** key to check for a value of a GSettings key.

The session manager runs the application automatically if the key's value is true. If the key's value changes in the running session, the session manager starts or stops the application, depending on what the previous value for the key was.

14.3.6. Configuring Automatic Login

A user with an *Administrator* account type can enable *Automatic Login* from the **Users** panel in the GNOME **Settings**. System administrators can also set up automatic login manually in the **GDM** custom configuration file, as follows.

Example 14.1. Configuring Automatic Login for a user john

Edit the `/etc/gdm/custom.conf` file and make sure that the `[daemon]` section in the file specifies the following:

```
[daemon]
AutomaticLoginEnable=True
AutomaticLogin=john
```

Replace *john* with the user that you want to be automatically logged in.

14.3.7. Configuring Automatic Logout

User sessions that have been idle for a specific period of time can be ended automatically. You can set different behavior based on whether the machine is running from a battery or from mains power by setting the corresponding GSettings key, then locking it.



Warning

Keep in mind that users can potentially lose unsaved data if an idle session is automatically ended.

Procedure 14.6. Setting Automatic Logout for a Mains Powered Machine

1. Create a `local` database for machine-wide settings in `/etc/dconf/db/local.d/00-autologout`:

```
[org/gnome/settings-daemon/plugins/power]
# Set the timeout to 900 seconds when on mains power
sleep-inactive-ac-timeout=900
# Set action after timeout to be logout when on mains power
sleep-inactive-ac-type='logout'
```

2. Override the user's setting and prevent the user from changing it in `/etc/dconf/db/local.d/locks/autologout`:

```
# Lock automatic logout settings
/org/gnome/settings-daemon/plugins/power/sleep-inactive-ac-timeout
/org/gnome/settings-daemon/plugins/power/sleep-inactive-ac-type
```

3. Update the system databases:

```
# dconf update
```

- Users must log out and back in again before the system-wide settings take effect.

The following GSettings keys are of interest:

org.gnome.settings-daemon.plugins.power.sleep-inactive-ac-timeout

The number of seconds that the computer needs to be inactive before it goes to sleep if it is running from AC power.

org.gnome.settings-daemon.plugins.power.sleep-inactive-ac-type

What should happen when the timeout has passed if the computer is running from AC power.

org.gnome.settings-daemon.plugins.power.sleep-inactive-battery-timeout

The number of seconds that the computer needs to be inactive before it goes to sleep if it is running from power.

org.gnome.settings-daemon.plugins.power.sleep-inactive-battery-type

What should happen when the timeout has passed if the computer is running from battery power.

You can run the **gsettings range** command on a key for a list of values which you can use. For example:

```
$ gsettings range org.gnome.settings-daemon.plugins.power sleep-
inactive-ac-type
enum
'blank'
'suspend'
'shutdown'
'hibernate'
'interactive'
'nothing'
'logout'
```

14.3.8. Setting Screen Brightness and Idle Time

By setting the following GSettings keys, you can configure the drop in the brightness level, and set brightness level and idle time.

Example 14.2. Setting the Drop in the Brightness Level

To set the drop in the brightness level when the device has been idle for some time, create a **local** database for machine-wide settings in **/etc/dconf/db/local.d/00-power**, as in the following example:

```
[org/gnome/settings-daemon/plugins/power]
idle-dim=true
```

Example 14.3. Setting Brightness Level

To change the brightness level, create a **local** database for machine-wide settings in `/etc/dconf/db/local.d/00-power`, as in the following example, and replace `30` with the integer value you want to use:

```
[org/gnome/settings-daemon/plugins/power]
idle-brightness=30
```

Example 14.4. Setting Idle Time

To set the idle time after which the screen must be blanked and the default screensaver displayed, create a **local** database for machine-wide settings in `/etc/dconf/db/local.d/00-session`, as in the following example, and replace `900` with the integer value you want to use:

```
[org/gnome/desktop/session]
idle-delay=uint32 900
```

You must include the **uint32** along with the integer value as shown.

Incorporate your changes into the system databases by running the **dconf update** command as root.

Users must log out and back in again before the system-wide settings take effect.



Note

You can also lock down the above settings to prevent users from changing them. For more information about locks, see [Section 9.5.1, “Locking Down Specific Settings”](#).

14.3.9. Locking the Screen When the User Is Idle

If you want to enable the screensaver and make the screen lock automatically when the user is idle, you need to create a dconf profile, set the GSettings key pairs and then lock it to prevent users from editing it.

Procedure 14.7. Enabling the Screensaver and Locking the Screen

1. Create a **local** database for system-wide settings in `/etc/dconf/db/local.d/00-screensaver`:

```
[org/gnome/desktop/session]
# Set the lock time out to 180 seconds before the session is
considered idle
idle-delay=uint32 180
[org/gnome/desktop/screensaver]
# Set this to true to lock the screen when the screensaver
activates
lock-enabled=true
# Set the lock timeout to 180 seconds after the screensaver has
been activated
lock-delay=uint32 180
```

You must include the `uint32` along with the integer key values as shown.

2. Override the user's setting and prevent the user from changing it in the `/etc/dconf/db/local.d/locks/screensaver` file:

```
# Lock desktop screensaver settings
/org/gnome/desktop/session/idle-delay
/org/gnome/desktop/screensaver/lock-enabled
/org/gnome/desktop/screensaver/lock-delay
```

3. Update the system databases:

```
# dconf update
```

4. Users must log out and back in again before the system-wide settings take effect.

14.3.10. Screencast Recording

GNOME Shell features a built-in screencast recorder that allows users to record desktop or application activity during their session and distribute the recordings as high-resolution video files in the `webm` format.

Procedure 14.8. Making a Screencast

1. To start the recording, press **Ctrl+Alt+Shift+R**.

When the recorder is capturing the screen activity, it displays a red circle in the bottom-right corner of the screen.

2. To stop the recording, press **Ctrl+Alt+Shift+R**. The red circle in the bottom-right corner of the screen disappears.
3. Navigate to the `~/Videos` folder where you can find the recorded video with a file name that starts with **Screencast** and includes the date and time of the recording.

Note that the built-in recorder always captures the entire screen, including all monitors in multi-monitor setups.

Chapter 15. Virtual File Systems and Disk Management

15.1. GVFS

GVFS (GNOME Virtual File System) is an extension of the virtual file system interface provided by the libraries the GNOME Desktop is built on. **GVFS** provides complete virtual file system infrastructure and handles storage in the GNOME Desktop.

GVFS uses addresses for full identification based on the URI (Uniform Resource Identifier) standard, syntactically similar to URL addresses used in web browsers. These addresses in form of *schema://user@server/path* are the key information determining the kind of service.

15.2. Back Ends for GVFS

There is a number of back ends in **GVFS**, which provide access to a specific type of resource. The following is a list of available **GVFS** back ends and their specifications:

Table 15.1. Available Back Ends

Back end	Description
afc	Similar to MTP (Media Transfer Protocol), exposes files on your Apple iDevice (connected through USB).
afp	Apple Filing Protocol (AFP) client to access file services of Mac operation system X and original Mac operation system.
archive	Handles various archiving files (ZIP, TAR) in read-only way.
burn	A virtual back end used by burning applications as a temporary storage for new CD/DVD/BD medium contents.
cdda	Exposes Audio CD through separate Waveform Audio File Format (WAV) files.
computer	Virtual back end consolidating active mounts and physical volumes. Acts similarly to a signpost. Previously used by Nautilus for its Computer view.
dav, davs	WebDAV client, including secure variant. Authentication is possible only during mount, does not support later re-authentication on per-folder basis.
dns-sd	DNS Service Discovery – Avahi client, used during network browsing, forms persistent URIs to discovered services.
ftp	A fully featured FTP (File Transfer Protocol) client, without FTPS support for the time being. Supports passive transfers by default.
gphoto2	A Picture Transfer Protocol (PTP) client to access your camera attached via USB or FireWire.
http	Handles all HTTP requests; useful for easy downloading files from web in client applications.
locatest	Simple testing back end proxying file:/// URI.; with error injection support.
mtp	Media Transfer Protocol back end for accessing media player and smart phones memory.
network	For browsing the network, showing nearby Avahi and Samba servers.
obexftp	A Bluetooth client.
recent	A back end used in GtkFileChooser to list recent files used by GNOME applications.
sftp	A fully-featured SFTP (SSH File Transfer Protocol) client.
smb	Access Samba and Windows shares.
trash	A trash back end which allows to restore deleted files.



Note

Some back ends are packaged separately and not installed by default. For installing additional back ends, use the **yum** package manager.

To use services of a back end, an URI string must be formed. This string is a basic identifier used in **GVFS**, which carries all necessary information needed for unique identification, such as type of service (back end ID), absolute path and user name if needed. You can see this information in the **Nautilus** address bar and GTK+ open or save file dialogs.

The example below is a very basic form of the URI string and points to a root directory (*/*) of the FTP (File Transfer Protocol) server running at *ftp.myserver.net* domain:

Example 15.1. URI String Pointing to the Root Directory

```
ftp://ftp.myserver.net/
```

The following example points to a text file in a specified path using authentication:

Example 15.2. URI String Pointing to a Text File

```
ssh://joe@ftp.myserver.net/home/joe/todo.txt
```

15.3. Mounting, Unmounting and Ejecting

In virtual file systems, particular resources are set to be mounted automatically, but a most common way is to trigger mounts manually.

Procedure 15.1. Manual Mounting

1. Open a file in **Nautilus** (that is, the **Files** application).
2. In the location bar at the top of your screen, enter a well-formed URI string. If the location bar does not display, press **Ctrl+L**.

Alternatively, **Nautilus** provides **Connect to server** dialog, which you find by going into **Files** → **Connect to server**.

3. When asked for login credentials, type your name and password into the relevant entry boxes.
4. Once the mounting process is finished, you are allowed to work with files.

When you need to unmount the resource, follow the simple procedure below.

Procedure 15.2. Unmounting

1. Click the eject icon on the chosen mount.
2. Wait until the mount disappears or notification about safe removal is displayed.



Important

Data may be cached or being slowly written in the background for performance reasons. To deliver the data safely on the device or remote resource, never unplug or disconnect the device or remote resource.

Mounts are shared between applications and are tracked globally within the running desktop session, which means that even if you quit an application that triggered the mount, it continues to be available for any other application. The same way multiple applications may access the mount at the same time, unless it was limited by a back end (some protocols permit only single channel due to their design).



Important

GVFS mounts, (and physical volumes as well, are restricted to their owner only, no other user is permitted to exploit your privacy.

15.4. Managing Bookmarks

You can save a reference to a location by bookmarking it.

Procedure 15.3. To bookmark a Location:

1. Select the folder or file you want to bookmark.
2. Press **Ctrl+D**.

The first time a bookmark is activated, the **GVFS** subsystem looks for existing mounts and spawns a new one if not already present. This way you are able to authenticate even within the open or save dialog.

Bookmarks are well integrated in GTK+ and the GNOME Desktop: every application that presents a standard GTK+ open or save dialog (technically called **GtkFileChooser**) lists bookmarks in the left panel of the dialog. Also **Nautilus** and its clones present bookmarks in a sidebar or, more universally, in the **Files** menu.



Note

If you have no pages bookmarked yet, the **Bookmarks** label does not display.

Besides **Bookmarks**, all other available **GVFS** volumes and mounts are listed in the **GtkFileChooser** sidebar. Sometimes a bookmark and a **GVFS** volume combine into a single item to prevent duplication and confusion. **Bookmarks** then can have eject icon just like **GVFS** mounts.

Bookmarks are located in the `~/.config/gtk-3.0/bookmarks` file. In the example below, the bookmarked locations are `~/Music`, `~/Pictures`, `~/Videos`, `~/Downloads`, and `~/bin`, so the content of the `~/.config/gtk-3.0/bookmarks` file looks as follows:

Example 15.3. The `~/.config/gtk-3.0/bookmarks` File

```
file:///home/username/Music
file:///home/username/Pictures
file:///home/username/Videos
file:///home/username/Downloads
file:///home/username/bin
```

Replace *username* with the user name you want to use.

Procedure 15.4. To edit Bookmarks:

1. Open the **Files** menu on the top bar.
2. Click **Bookmark** to open the bookmark editor.

15.5. Configuring a Default Server List

From the system administrator's point of view, it is not possible to set a group of bookmarks for all users at once. Nevertheless, the system administrator can allow access to file shares for their users.

Nautilus stores a list of file-sharing servers in the `~/.config/nautilus/servers` file in the *XBEL* format. It is possible to add the list of file-sharing servers to that file to make file shares easily accessible to your users.



Note

XBEL (XML Bookmark Exchange Language) is an XML standard that lets you share URIs (Uniform Resource Identifiers). In GNOME, *XBEL* is used to share desktop bookmarks in applications such as **Nautilus**.

In the example below, **Nautilus** creates a bookmark titled *GNOME FTP* with the URI `ftp://ftp.gnome.org/` in the `~/.config/nautilus/servers` file.

Example 15.4. The `~/.config/nautilus/servers` File

```
<?xml version="1.0" encoding="UTF-8"?>
<xbel version="1.0"
  xmlns:bookmark="http://www.freedesktop.org/standards/desktop-
bookmarks"
  xmlns:mime="http://www.freedesktop.org/standards/shared-mime-
info">
  <bookmark href="<input>ftp://ftp.gnome.org/</input>">
    <title><input>GNOME FTP</input></title>
  </bookmark>
</xbel>
```

15.6. Exposing GNOME Virtual File Systems to All Other Applications

In addition to applications built with the GIO library being able to access GVFS mounts, **GVFS** also provides a **FUSE** daemon which exposes active GVFS mounts. This means that any application can access active **GVFS** mounts using the standard POSIX APIs as though they were regular filesystems.

Nevertheless, there are applications in which additional library dependency and new VFS subsystem specifics may be unsuitable or too complex. For such reasons and to boost compatibility, **GVFS** provides a **FUSE (Filesystem in Userspace)** daemon, which exposes active mounts through its mount for standard POSIX (Portable Operating System Interface) access. This daemon transparently translates incoming requests to imitate a local file system for applications.



Important

The translation coming from the different design is not 100% feature-compatible and you may experience difficulties with certain combinations of applications and **GVFS** back ends.

The **FUSE** daemon starts automatically with the **GVFS** master daemon and places its mount either in the `/run/user/UID/gvfs` or `~/.gvfs` files as a fallback. Manual browsing shows that there individual directories for each **GVFS** mount. When you are opening documents from **GVFS** locations with non-native applications, a transformed path is passed as an argument. Note that native GIO applications automatically translate this path back to a native URI.

15.7. Password Management of GVFS Mounts

A typical **GVFS** mount asks for credentials on its activation unless the resource allows anonymous authentication or does not require any at all. Presented in a standard GTK+ dialog, the user is able to choose whether the password should be saved or not.

Procedure 15.5. Example: Authenticated Mount Process

1. Open **Files** and activate the address bar by pressing **Ctrl+L**.
2. Enter a well-formed URI string of a service that needs authentication (for example, **sftp://localhost/**).
3. The credentials dialog is displayed, asking for a user name, password and password store options.
4. Fill in the credentials and confirm.

In case the persistent storage is selected, the password is saved in the user keyring. **GNOME Keyring** is a central place for secrets storage. It is encrypted and automatically unlocked on desktop session start using the password provided on login by default. If it is protected by a different password, the password is set at the first use.

To manage the stored password and **GNOME Keyring** itself, the **Seahorse** application is provided. It allows individual records to be removed or passwords changed. For more information on **Seahorse**, consult the help manual for Seahorse embedded directly in the desktop.

15.8. GVFS Tools and xdg-utils in GNOME

GVFS ships with several commands that may come useful for scripting or testing. A set of POSIX commands counterparts is offered:

✦ **gvfs-cat**

- » **gvfs-less**
- » **gvfs-mkdir**
- » **gvfs-mount**
- » **gvfs-rename**
- » **gvfs-set-attribute**
- » **gvfs-copy**
- » **gvfs-ls**
- » **gvfs-move**
- » **gvfs-rm**
- » **gvfs-trash**
- » **gvfs-info**
- » **gvfs-save**
- » **gvfs-tree**

Some more additional commands are provided for more control of **GVFS** specifics:

- » **gvfs-monitor-dir**
- » **gvfs-monitor-file**
- » **gvfs-mime**
- » **gvfs-open**

All these commands are native GIO clients, there is no need for the fallback **FUSE** daemon to be running. Their purpose is not to be drop-in replacements for POSIX commands, in fact, a very little range of switches is supported. In their basic form, an URI string (instead of a local path) is taken as an argument.

This all allows GNOME to be well-supported within **xdg-tools** (a freedesktop.org interoperability project). For example, the commonly used **xdg-open** actually calls **gvfs-open** when a running GNOME session is detected, reading file type associations from the correct location.

The following are a few examples of the GVFS commands usage:

- » To lists all files in **/tmp** on a local file system, execute:

```
$ gvfs-ls file:///tmp
```

- » The command below lists contents of a text file from a remote machine:

```
$ gvfs-cat ssh://joe@ftp.myserver.net/home/joe/todo.txt
```

- » To copy the referenced text file to a local **/tmp** directory, run:

```
$ gvfs-copy ssh://joe@ftp.myserver.net/home/joe/todo.txt /tmp/
```



Note

For user convenience, **bash** completion is provided as a part of the package.

15.9. Using GVFS Metadata

GVFS has its metadata storage implemented as a set of simple key/value pairs information bound to a particular file. Thus, there is a tool for a user or application to save small data designed for runtime information such as icon position, last-played location, position in a document, emblems, notes, and so on.

Whenever a file or directory is moved, metadata is moved accordingly so that it stays connected to the respective file. **GVFS** stores all metadata privately so it is available only on the machine. However, **GVFS** mounts and removable media are tracked as well.



Note

Removable media are now mounted in the `/run/media/` instead of the `/media` directory.

To view and manipulate with metadata, you can use:

- the **gvfs-info** command;
- the **gvfs-set-attribute** command;
- or any other native GIO way of working with attributes.

In the following example, a custom metadata attribute is set. Notice the differences between particular **gvfs-info** calls and data persistence after a move or rename (note the **gvfs-info** command output):

Example 15.5. Setting Custom Metadata Attribute

```
$ touch /tmp/myfile
$ gvfs-info -a 'metadata::*' /tmp/myfile
attributes:
$ gvfs-set-attribute -t string /tmp/myfile 'metadata::mynote' 'Please
remember to delete this file!'
$ gvfs-info -a 'metadata::*' /tmp/myfile
attributes:
  metadata::mynote: Please remember to delete this file!
$ gvfs-move /tmp/myfile /tmp/newfile
$ gvfs-info -a 'metadata::*' /tmp/newfile
attributes:
  metadata::mynote: Please remember to delete this file!
```

15.10. Troubleshooting

15.10.1. Active VFS Mounts Are Invisible

If your active VFS mounts are invisible, it means that your application is not a native GIO client. Native GIO clients are typically all GNOME applications using GNOME libraries (glib, gio). There is a service, **gvfs-fuse**, provided as a fallback for non-GIO clients.

To find the cause of an active but invisible VFS mount, check whether the **gvfs-fuse** process is running. Since **gvfs-fuse** runs automatically and it is not recommended to start it by yourself, try logging out and logging in as a first option.

Alternatively, you can start the VFS compatibility mount manually in the terminal:

1. Find the **UID** (system user ID) for the `/run/user/UID/gvfs/` path by running the **id** command (the **gvfsd-fuse** daemon requires a path it is supposed to expose its services at).

Or, when the `/run/user/UID/gvfs/` path is unavailable, **gvfsd-fuse** uses a `.gvfs` path in your home directory.
2. Start the **gvfsd-fuse** daemon by running the `/usr/libexec/gvfsd-fuse -f /run/user/UID/gvfs` command.
3. Now, the VFS mount is available and you can manually browse for the path in your application.

15.10.2. Connected USB Disk Is Invisible

Under certain circumstances, when you connect a flash drive, the GNOME Desktop may not display it. If the drive is invisible, it means that:

- ✦ You cannot see the device in the **Disks** application.
- ✦ You have run the **udisksctl dump** command, which lists the current state of the **udisks** daemon and shows information about all objects, but your flash drive is not among them.
- ✦ You have run the **dmesg** command. Towards the end of the log, there are messages related to USB device detection and a list of detected partitions, but your flash drive is not among them.

If your flash drive is not visible, you can attempt to set the **Show in user interface** flag in **Disks**:

1. Open **Disks** by pressing the **Super** key to enter the **Activities Overview**, typing **Disks**, and then pressing **Enter**.
2. In the **Volumes** actions menu, click **Edit Mount Options...**
3. Click **Show in user interface**.
4. Confirm by clicking **OK**.

If the flash drive is still not visible, you may try to remove the drive and try connecting it again.

For more information about the storage, see the *Red Hat Enterprise Linux 7 Storage Administration Guide*, available from http://access.redhat.com/site/documentation/Red_Hat_Enterprise_Linux/.

15.10.3. Nautilus Shows Unknown or Unwanted Partitions

Check whether the device is listed in the `/etc/fstab` file as the devices are not shown in the user interface by default. The `/etc/fstab` file typically lists disk partitions that are intended to be used in the operating system, and indicates how they are mounted. Certain mount options may allow or prevent displaying the volume in the user interface.

One of the solutions to hide a volume is to uncheck **Show in user interface** in the **Mount Options** window in the **Disks** application:

1. Open **Disks** by pressing the **Super** key to enter the **Activities Overview**, typing **Disks**, and then pressing **Enter**.
2. In the **Volumes** actions menu, click **Edit Mount Options...**
3. Uncheck **Show in user interface** and confirm by clicking **OK**.

15.10.4. Connection to Remote File System Is Unavailable

There is a number of situations in which the client is unexpectedly and unwillingly disconnected from a virtual file system (or a remote disk) mount, afterwards is not reconnected automatically, and error messages are returned. Several causes trigger these situations:

- » The connection is interrupted (for example, your laptop is disconnected from the Wi-Fi).
- » The user is inactive for some time and is disconnected by the server (idle timeout).
- » The computer is resumed from sleeping mode.

The solution is to unmount and mount again the file system, which reconnects the resource.



Note

Should the connection be disabled more often, check the settings in the **Network** panel in the **GNOME Settings**.

15.10.5. What to Do If the Disk Is Busy?

If you receive a notification about your disk being busy, determine the programs that are accessing the disk. Then, you may regularly end the programs you are running. Or, you can use the **System Monitor** to kill the programs forcefully.

Where and How to View System Processes?

- » Run the **lsdf** command to get the list of open files alongside with processes. If **lsdf** is not available, run the **ps ax** command that also provides the list of running processes.
- » Alternatively, you can use the **System Monitor** application to display the running processes in a GUI.
- » Make sure that you have **iostat** installed by running the following command:

```
# yum install iostat
```

Then run **iostat** as root to view the system processes.

When you have determined the programs, end or kill them as follows:

- » On the command line, execute the **kill** command.
- » In the **System Monitor**, right-click the line with the program process name, and click the **End Process** or **Kill Process** drop-down menu item.

Chapter 16. Hardware Configuration

16.1. Tablets

16.1.1. My Wacom Tablet Is Not Mapped to the Correct Screen

To use the screen mapping correctly, support for your tablet must be included in the **libwacom** database and **udev** rules file (`/lib/udev/rules.d/50-libwacom.rules`).

libwacom is a tablet information client library storing data about Wacom models. This library is used by both the **gnome-settings-daemon** component and the **Wacom Tablet** settings panel in GNOME.

To add support for a new tablet into **libwacom**, a new tablet definition file must be created. Tablet definition files are included in the *libwacom-data* package. If this package is installed, the tablet definition files are then locally available in the `/usr/share/libwacom/` directory.

16.1.2. Where Is the Wacom Tablet Configuration Stored?

Configuration for your Wacom tablet is stored in GSettings in the `/org/gnome/settings-daemon/peripherals/wacom/machine-id-device-id` key, where *machine-id* is a D-Bus machine ID, and *device-id* is a tablet device ID. The configuration schema for the tablet is `org.gnome.settings-daemon.peripherals.wacom`.

Similarly, stylus configuration is stored in the `/org/gnome/settings-daemon/peripherals/wacom/device-id/tool-id` key, where *tool-id* is the identifier for the stylus used for professional ranges. For the consumer ranges with no support for *tool-id*, a generic identifier is used instead. The configuration schema for the stylus is `org.gnome.settings-daemon.peripherals.wacom.stylus`, and for the eraser `org.gnome.settings-daemon.peripherals.wacom.eraser`.

To get the full list of tablet configuration paths used on a particular machine, you can use the **gsd-list-wacom** tool, which is provided by the *gnome-settings-daemon-devel* package.

To verify that the *gnome-settings-daemon-devel* package is installed on the system, make sure that the system is subscribed to the **Optional** channel, and run the following command:

```
# yum install gnome-settings-daemon-devel
```

To learn how to subscribe the system to the **Optional** channel, read the following resource:

✦ <https://access.redhat.com/solutions/392003>

After verifying that the package is installed, run the following command:

```
$ /usr/libexec/gsd-list-wacom
```

Note that using *machine-id*, *device-id*, and *tool-id* in configuration paths allows for shared home directories with independent tablet configuration per machine.

16.1.3. When Sharing Home Directories Between Machines, the Wacom Settings Only Apply to One Machine

This is because the D-Bus machine ID (*machine-id*) for your Wacom tablet is included in the configuration path of the `/org/gnome/settings-daemon/peripherals/wacom/machine-id-device-id` GSettings key, which stores your tablet settings.

Appendix A. Accessing Red Hat Documentation

Red Hat Product Documentation located at <https://access.redhat.com/site/documentation/> serves as a central source of information. It is currently translated in 22 languages and for each product, it provides different kinds of books from release and technical notes to installation, user, and reference guides in HTML, PDF, and EPUB formats.

The following is a brief list of documents that are directly or indirectly relevant to this book:

- The *Red Hat Enterprise Linux 7 System Administrator's Guide*, available from http://access.redhat.com/site/documentation/Red_Hat_Enterprise_Linux/, contains detailed information about various system components, for instance the **GRUB 2** boot loader, package management, **systemd**, or printer configuration.
- The *Red Hat Enterprise Linux 7 Installation Guide*, available from http://access.redhat.com/site/documentation/Red_Hat_Enterprise_Linux/, contains detailed information about installing Red Hat Enterprise Linux 7 and using the **Anaconda** installer.
- The *Red Hat Enterprise Linux 7 Migration Planning Guide*, available from http://access.redhat.com/site/documentation/Red_Hat_Enterprise_Linux/, contains an overview of major changes in behavior and compatibility between Red Hat Enterprise Linux 6 and Red Hat Enterprise Linux 7. The Migration Planning Guide also introduces the tools provided by Red Hat to assist with upgrades to Red Hat Enterprise Linux 7.
- The *Red Hat Enterprise Linux 7 Networking Guide*, available from http://access.redhat.com/site/documentation/Red_Hat_Enterprise_Linux/, contains information about configuration and administration of networking for Red Hat Enterprise Linux 7.
- The *Red Hat Enterprise Linux 7 Virtualization Deployment and Administration Guide*, available from http://access.redhat.com/site/documentation/Red_Hat_Enterprise_Linux/, contains information about installing, configuring, and managing Red Hat Enterprise Linux virtualization.

Appendix B. Acknowledgements

Certain portions of this text first appeared in the [GNOME Desktop System Administration Guide](#). Copyright © 2014 The GNOME Project, Michael Hill, Jim Campbell, Jeremy Bicha, Ekaterina Gerasimova, minnie_eg, Aruna Sankaranarayanan, Sindhu S, Shobha Tyagi, Shaun McCance, David King, and others. Licensed under a [Creative Commons Attribution-ShareAlike 3.0 Unported License](#).

The editors of the *Red Hat Enterprise Linux 7 Desktop Migration and Administration Guide* would like to thank the GNOME community members for their valuable contributions to the *GNOME Desktop System Administration Guide*.

Appendix C. Revision History

Revision 0.1-82	Wed 11 Nov 2015	Jana Heves
Red Hat Enterprise Linux 7.2 release of the book.		
Revision 0.1-80	Wed 24 Jun 2015	Petr Kovář
Added a link to the Anaconda Customization Guide for Red Hat Enterprise Linux 7.		
Revision 0.1-78	Tue 07 Apr 2015	Petr Kovář
Added section <i>Allowing and Disallowing Online Accounts</i> .		
Revision 0.1-76	Tue 17 Feb 2015	Petr Kovář
Red Hat Enterprise Linux 7.1 release of the book.		
Revision 0.1-74	Thu 04 Dec 2014	Petr Kovář
Red Hat Enterprise Linux 7.1 Beta release of the book.		
Revision 0.1-69	Mon 02 Jun 2014	Petr Kovář
Red Hat Enterprise Linux 7.0 release of the book.		
Revision 0.1-35	Wed 11 Dec 2013	Petr Kovář
Red Hat Enterprise Linux 7.0 Beta release of the book.		