

RED HAT
SUMMIT

MANAGING SERVICES WITH RED HAT CLOUDFORMS AND ANSIBLE

Geert Jansen
Red Hat

William Deur
ING Bank

Jerome Marc
Red Hat

May 2017

AGENDA

- Why self service, challenges and solutions
- A customer perspective
- Demonstration

The background is a solid teal color with a large, faint, abstract graphic on the right side. This graphic consists of several concentric, irregular shapes that resemble ripples or a target, with a small red circle at the center. The overall aesthetic is modern and tech-oriented.

WHY SELF-SERVICE?

CHALLENGES AND SOLUTIONS

DIGITAL TRANSFORMATION DRIVING DRAMATIC CHANGES IN IT



CEO

Competitive pressure driving digital transformation

“The business environment today is pushing companies to respond to ever increasing competition.



LINE OF BUSINESS

Challenged to deliver services faster, at scale, and more efficiently

In order to remain competitive, they have to deliver their services faster, at greater scale, and do so efficiently in order to remain profitable.



DEVELOPERS

Need to develop applications faster with greater productivity

These demands drive application developers to create new applications and deliver them faster.



IT OPERATIONS

Must provide infrastructure agility, on-demand that scales as needed

This further places stress on the IT Operations team who has to provide a scalable, on-demand infrastructure that can service the Developers.”

Gartner

SELF-SERVICE SIGNIFICANTLY IMPROVES AGILITY



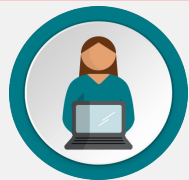
CEO

Competitive pressure driving digital transformation



LINE OF BUSINESS

Challenged to deliver services faster, at scale, and more efficiently



DEVELOPERS

Need to develop applications faster with greater productivity



IT OPERATIONS

Must provide infrastructure agility, on-demand that scales as needed

“We analyzed the numbers and realized with Red Hat we saved almost 10 years of time and almost \$5 million in soft savings.”

Jason Cornell, Cox automotive:

Self-service benefits

- Service delivery times: weeks to minutes
- Improved compliance by using standardized offerings
- More efficient use of staff



WARNING



**CHALLENGES
AHEAD**

#1 - LIFE CYCLE



TYPICAL SELF-SERVICE APPROACH

1. Deploy resources through a portal
2. There is no step 2

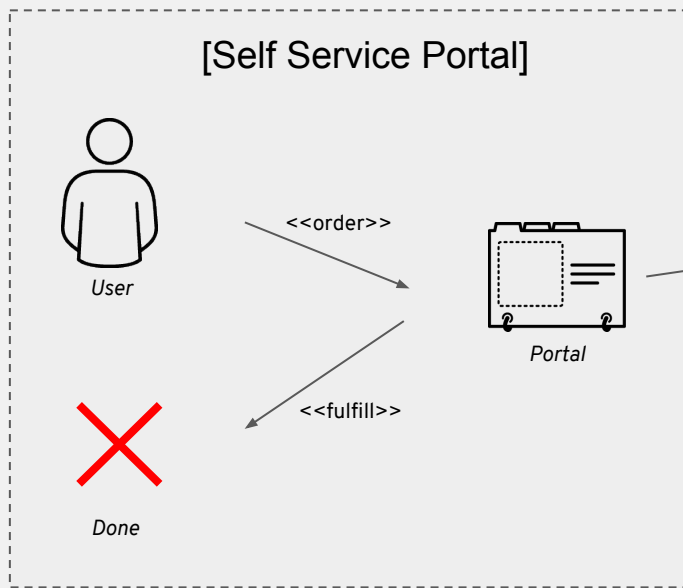


ISSUES WITH “FIRE AND FORGET”

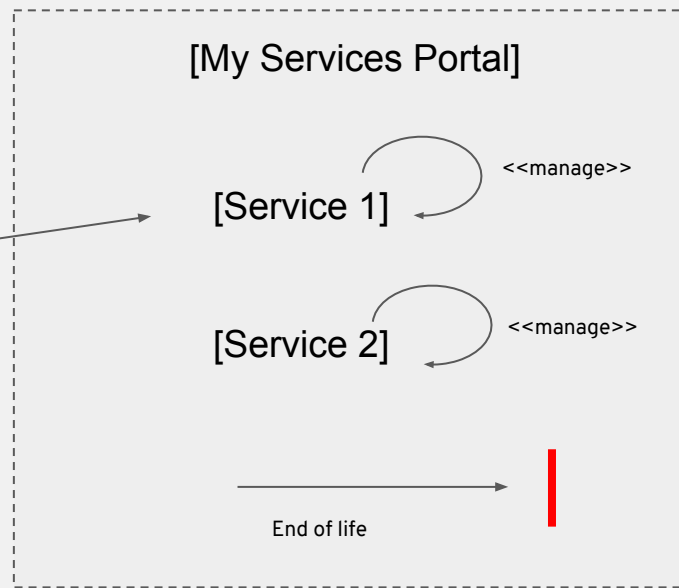
- When are the resources cleaned up? (sprawl!)
- How to manage resources after they are deployed (day-2 ops)? E.g.:
 - Restart VMs
 - Get a console
 - Snapshot a data volume
 - See resource utilization
- Who owns what?
- What resources are owned by what service?

SOLUTION - FULL LIFE CYCLE MANAGEMENT

RED HAT
CLOUDFORMS



"Classical" self service process



"My Services" for day-2 management

#2 - COMPLIANCE



USERS WANT

- Newer version of the OS
- Root access
- A newer version of a library
- An older version of a library
- Both versions of a library
- Root access
- The latest version of left-pad
- Root access?
- Root access!

CHALLENGE

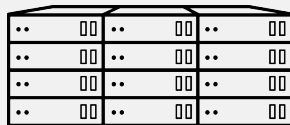
How to

- Be compliant: security, regulatory, corporate, other
- Not be in the way

TWO WAYS TO COMPLIANCE



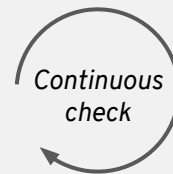
User



"I.T."

Option 1: change control
/ ITSM CM

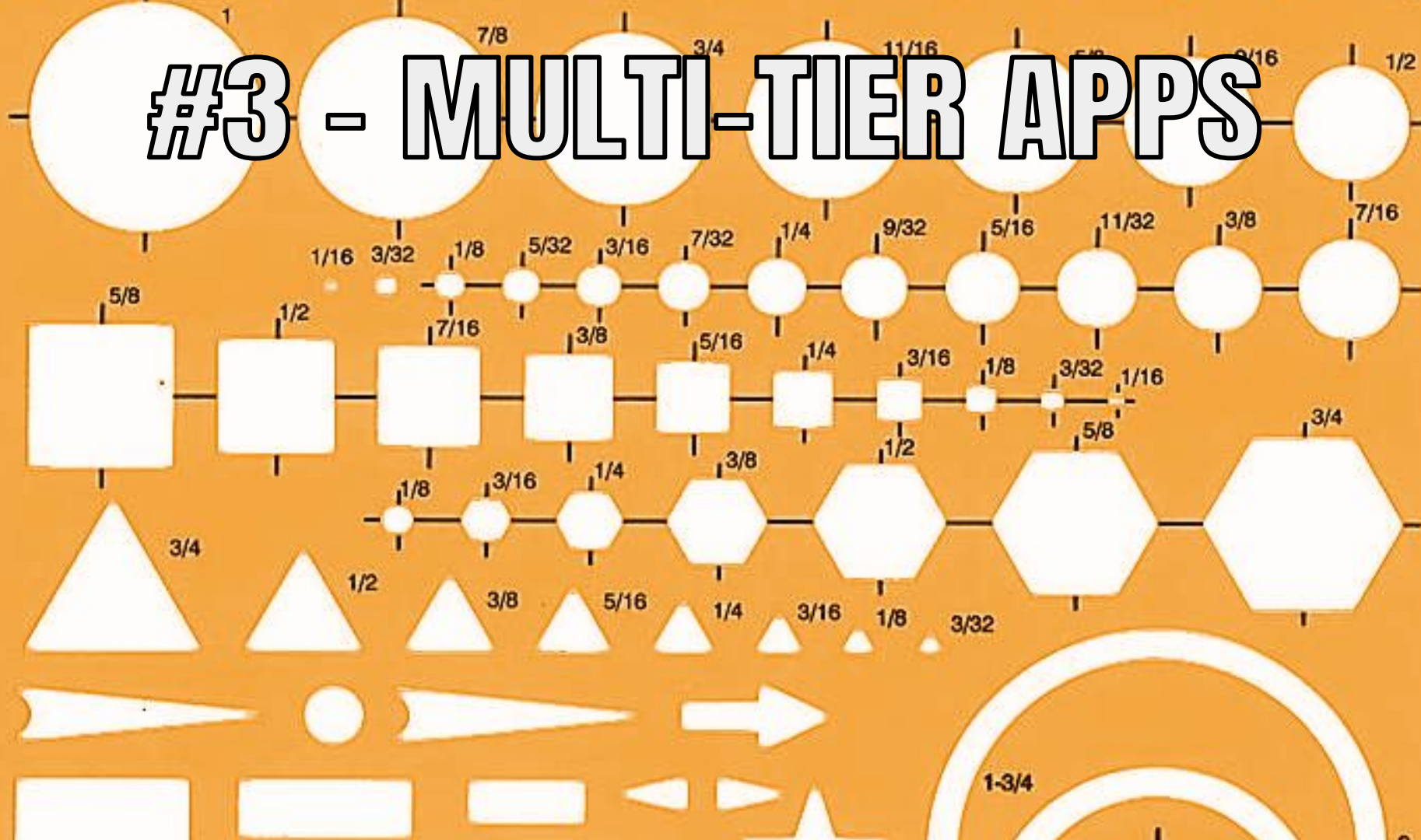
RED HAT[™]
CLOUDFORMS



- Continuous
- Agentless
- Cross-technology

Option 2: "trust but
verify"

#3 - MULTI-TIER APPS



SINGLE-VM VS. MULTI-TIER SELF SERVICE

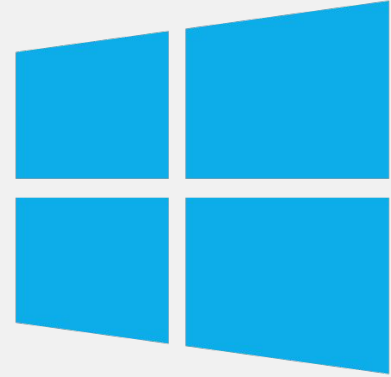
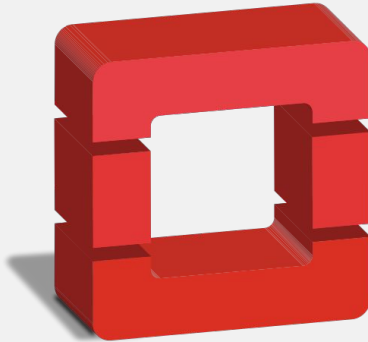


MULTI-TIER APPS: CHALLENGES

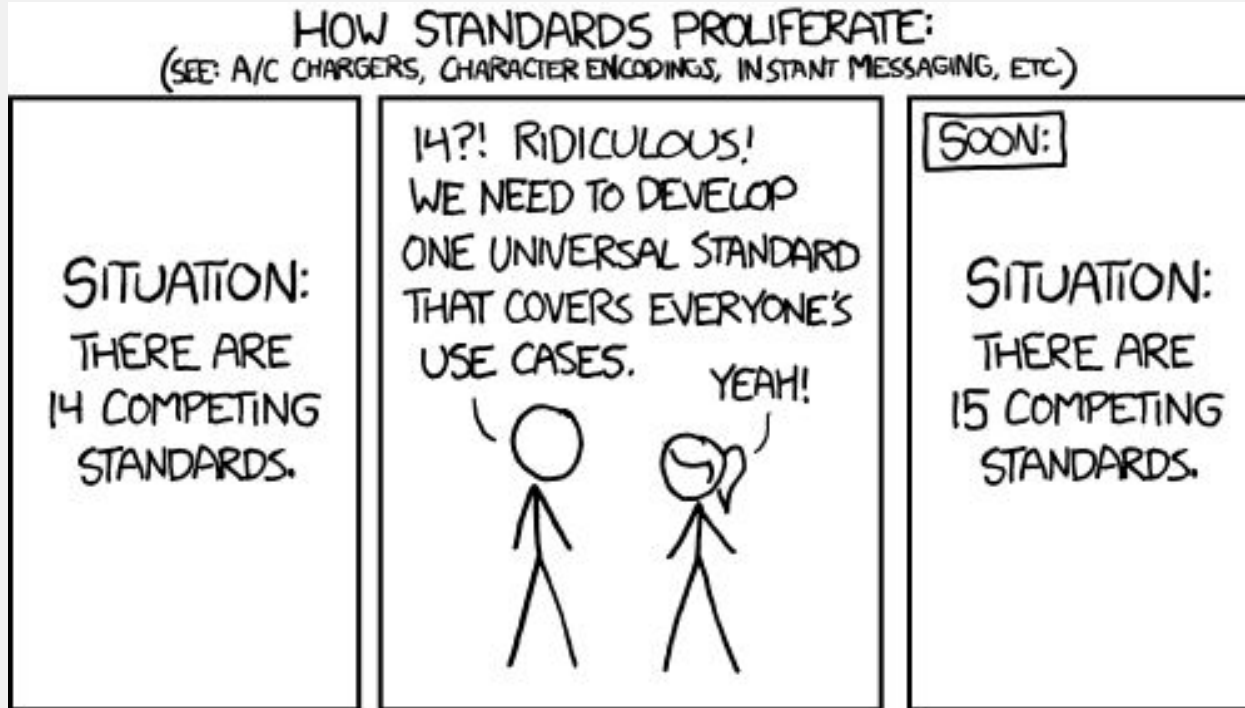
- Multiple types of resources to create: VMs, load balancers, subnets.
- Resources need to be created in certain order.
- Application software need to be installed.
- Application software needs to be configured for its role in the stack.
- Application software needs to be configured for its relationship with other resources.

Common solution: “Template”

TEMPLATE TYPE: CLOUD NATIVE



TEMPLATE TYPE: CLOUD ABSTRACTION



TEMPLATE TYPE: DESIGNER

The screenshot displays the Red Hat Ansible Tower Designer interface. On the left, a sidebar lists categories such as Software Components, Blueprints, XaaS, and Network & Security. Below this, there are sections for Network components (Existing Network, On-Demand Private, On-Demand NAT, On-Demand Routed), Security components (On-Demand Security Group, Existing Security Group, Security Tag), and Load Balancing (On-Demand NSX Load Balancer). The main workspace shows a design diagram with components like HIPAA, DB Tier, Dukesbank LB, Appserver (CentOS on vSphere), Database (RHEL on vSphere), and Verify Software License. A detailed view of the Appserver's Network configuration is shown at the bottom, listing two NICs:

#	Network	Assignment Type	Address	Load Balancing	Custom Properties
0	AppNW	DHCP			Edit
1	Production-1	DHCP		HTTP, HTTPS	Edit

ISSUES WITH TEMPLATES

- Lowest common denominator
 - OR Cloud specific

AUTOMATION VS TEMPLATES

- What if we had a Simple, Powerful, Agentless orchestration language?
 - That is understood and loved by the ops teams.
 - With large number of integrations and big community
 - Where it's very easy to define the creation process of a multi-tier app
- Then, Automation could be the Template

AUTOMATION AS THE TEMPLATE

- All of the following using the same template
 - Creation of resources
 - On-system configuration
 - Life-cycle actions
- 900+ available modules
- Individual orchestration steps can be declarative
- Included in CloudForms 4.5



SUMMARY

- Self-service can significantly improve agility
- Challenges with classical self-service
 - Life cycle management
 - How to enforce compliance?
 - How to define multi-tier apps?
- CloudForms 4.5 has
 - Full life-cycle management
 - Powerful, agent-less policy engine for enforcing compliance
 - Ansible “Automation is the Template” based service definition

A CUSTOMER PERSPECTIVE

What is ING and who am I



- Global financial institution with a strong European base
- Offering retail and commercial banking services in over 40 countries

- Lead Dev Engineer
- Dutch Infra department

Going through change

- Organisational
- VM deployment
- Why Cloudforms
- Component-api based

Self-service with custom portal

- Single entry point
- The use of Cloudforms
- Dynamic dialogs

```
{
  "name": "environment",
  "description": "Development, Test, Acceptance or Production",
  "data_type": "string",
  "display": "edit",
  "display_method_options": {},
  "required": true,
  "required_method_options": {},
  "default_value": "Development",
  "values": [
    [ "Development", "Development" ],
    [ "Test", "Test" ],
    [ "Acceptance", "Acceptance" ],
    [ "Production", "Production" ]
  ],
  "values_method_options": {},
  "options": {
    "sort_by": "none",
    "sort_order": "ascending"
  },
  "label": "Environment",
  "position": 2,
  "dynamic": false,
  "read_only": false,
  "visible": true,
  "type": "DialogFieldDropDownList",
  "resource_action": {
    "resource_type": "DialogField",
    "ae_attributes": {}
  }
}
```

Deploy RHEL 7 VM

Red Hat Enterprise Linux version 7

A stable, secure and ING-connected instance of Red Hat Enterprise Linux version 7, with the ability to run enterprise workloads on.

A linux platform

An instance of Red Hat Enterprise Linux version 7, running and available to carry a workload

How it works

1 Configure your VM

2 Review and deploy ✓

Select a deployment method

Recommended
 Advanced

A RHEL7 VM for general purpose with most used and pre-defined configuration.

VM specifications

CPU * ⓘ 2 CPU

Memory * ⓘ 8 GB

Storage type * ⓘ Medium

Availability zone * ⓘ Purple

General specifications

Cost center * ⓘ

Management domain * ⓘ

Environment details

Location * ⓘ

Private network * ⓘ

Environment * ⓘ

i You still have to fill in some required values.

feedback

What we have build

- Single-VM provisioning workflow providing RHEL 7
- IPAM
- IaaS API for placement
- Pre-register vm for backup and UAM
- HierAPI
- Ansible
- Monitoring / CMDB
- ...

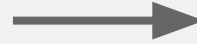
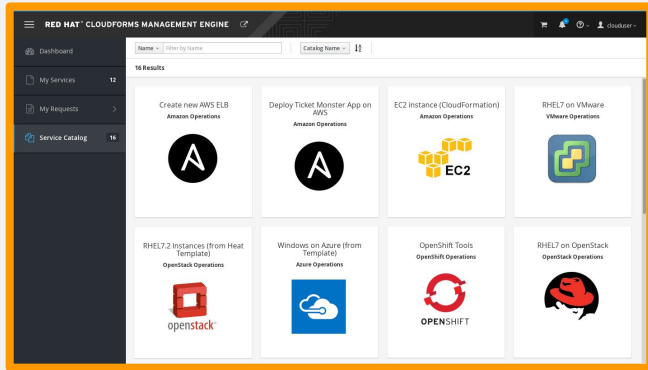
Future

- Second day operations
- Multi-VM
- ...

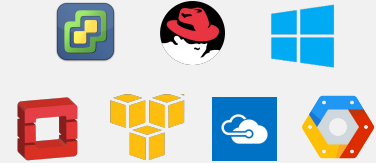
DEMONSTRATIONS



CLOUDFORMS SELF-SERVICE PORTAL



SIMPLE SERVICE PROVISIONING



TEMPLATE SERVICE PROVISIONING



AUTOMATION PROVISIONING



FULL
VISIBILITY



DAY 2
OPERATIONS



SECURITY
GOVERNANCE



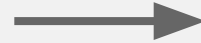
RESOURCE
CONSUMPTION



ANSIBLE SERVICES in CLOUDFORMS 4.5

**RED HAT®
CLOUDFORMS**

+  Deploy new Instances
Deploy NGINX & web application
Register instances with ELB



FULL
VISIBILITY



DAY 2
OPERATIONS



SECURITY
GOVERNANCE



RESOURCE
CONSUMPTION

WRAP-UP & Q&A

REFERENCES

- Download Red Hat CloudForms
<https://access.redhat.com/products/red-hat-cloudforms>
- Red Hat CloudForms Blog
<http://cloudformsblog.redhat.com/>
- Red Hat CloudForms YouTube channel
<https://www.youtube.com/user/cloudformsnow>

RED HAT
SUMMIT

THANK YOU



plus.google.com/+RedHat



facebook.com/redhatinc



linkedin.com/company/red-hat



twitter.com/RedHatNews



youtube.com/user/RedHatVideos

The logo consists of a red speech bubble shape pointing downwards, containing the text 'RED HAT' in a smaller font above 'SUMMIT' in a larger, bold font.

RED HAT
SUMMIT

LEARN. NETWORK.
EXPERIENCE
OPEN SOURCE.