

RSA[®]CONFERENCE2014

FEBRUARY 24 – 28 | MOSCONE CENTER | SAN FRANCISCO

Share.
Learn.
Secure.

Capitalizing on
Collective Intelligence

Threat Centric Security

SESSION ID: SP03-W03

Martin Roesch

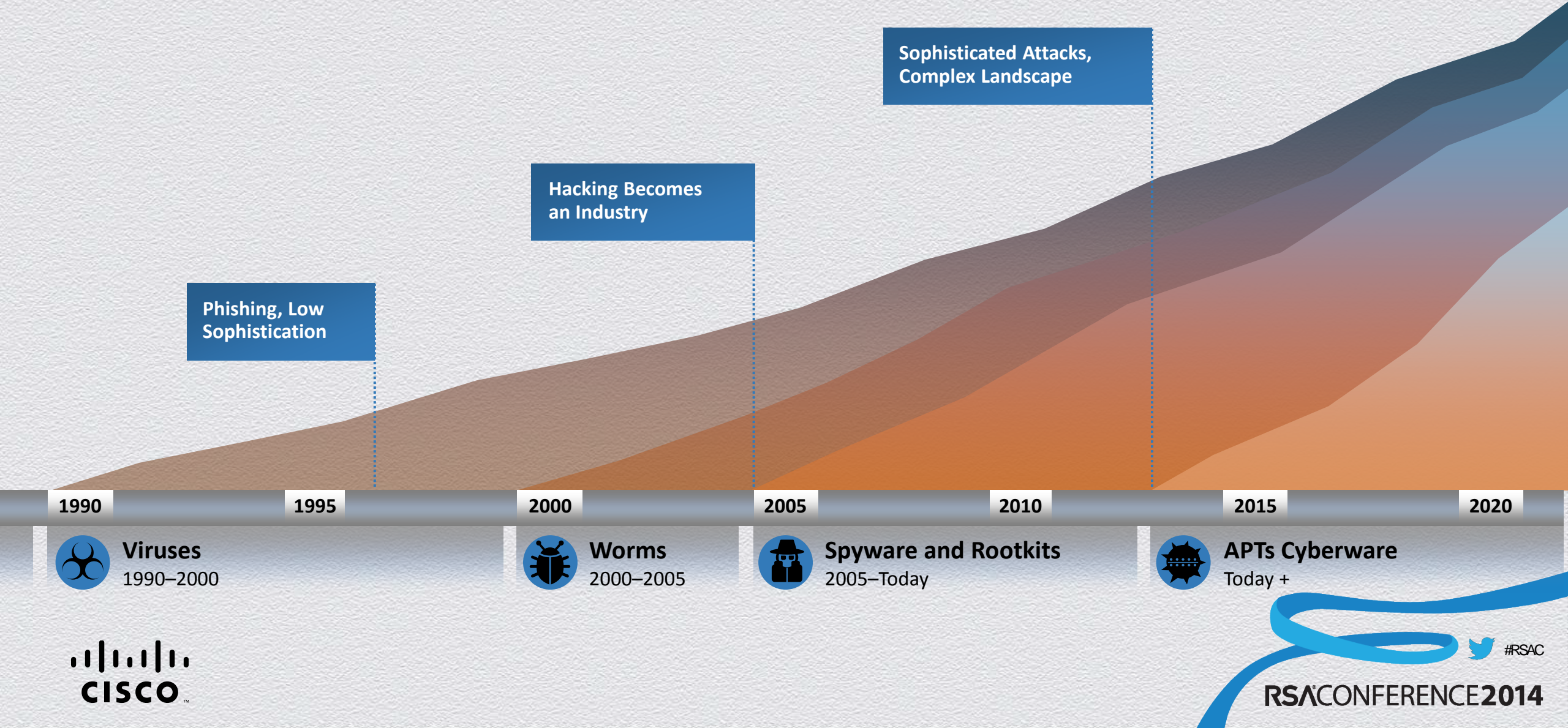
Vice President Chief Architect Security, Cisco



The Security Problem

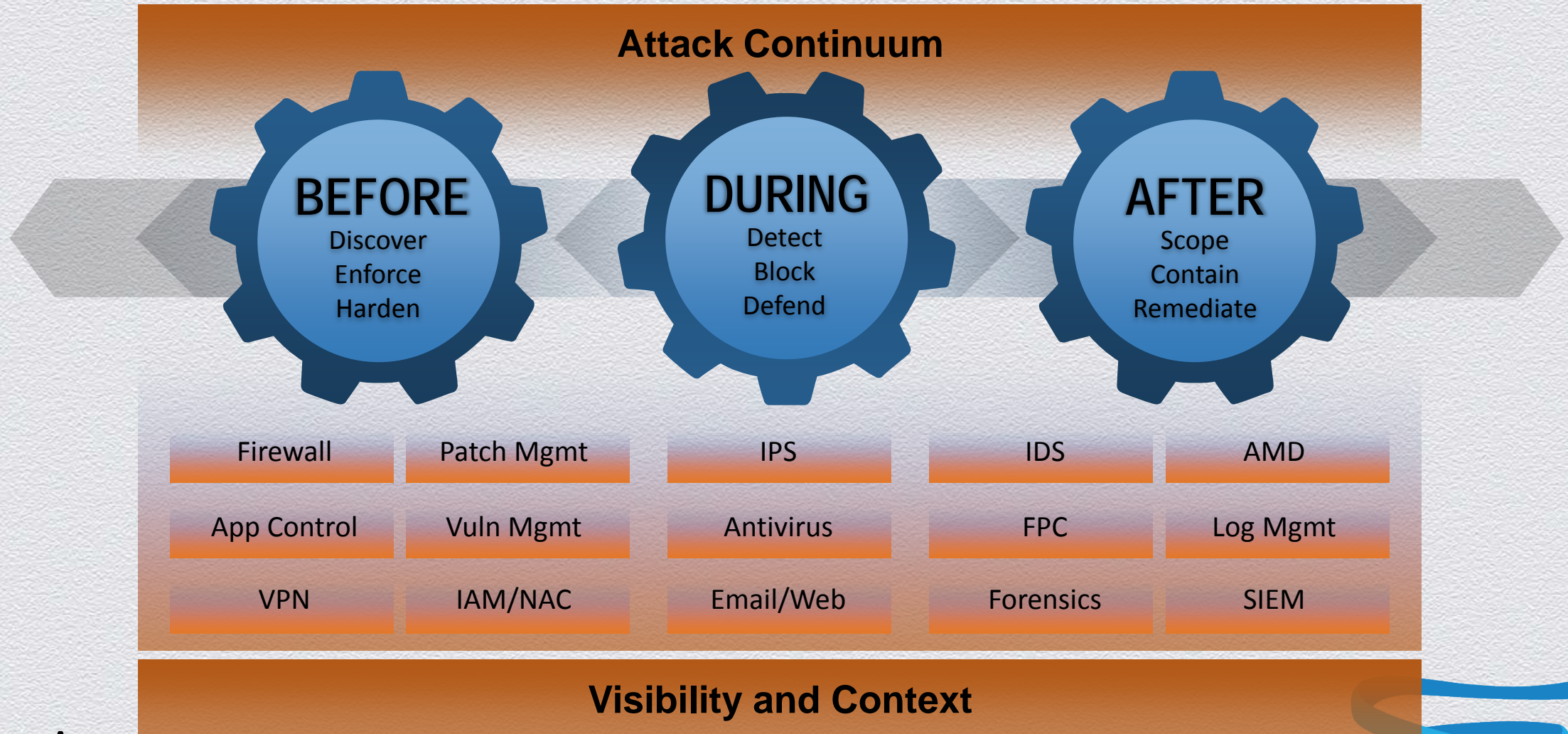


The Industrialization of Hacking

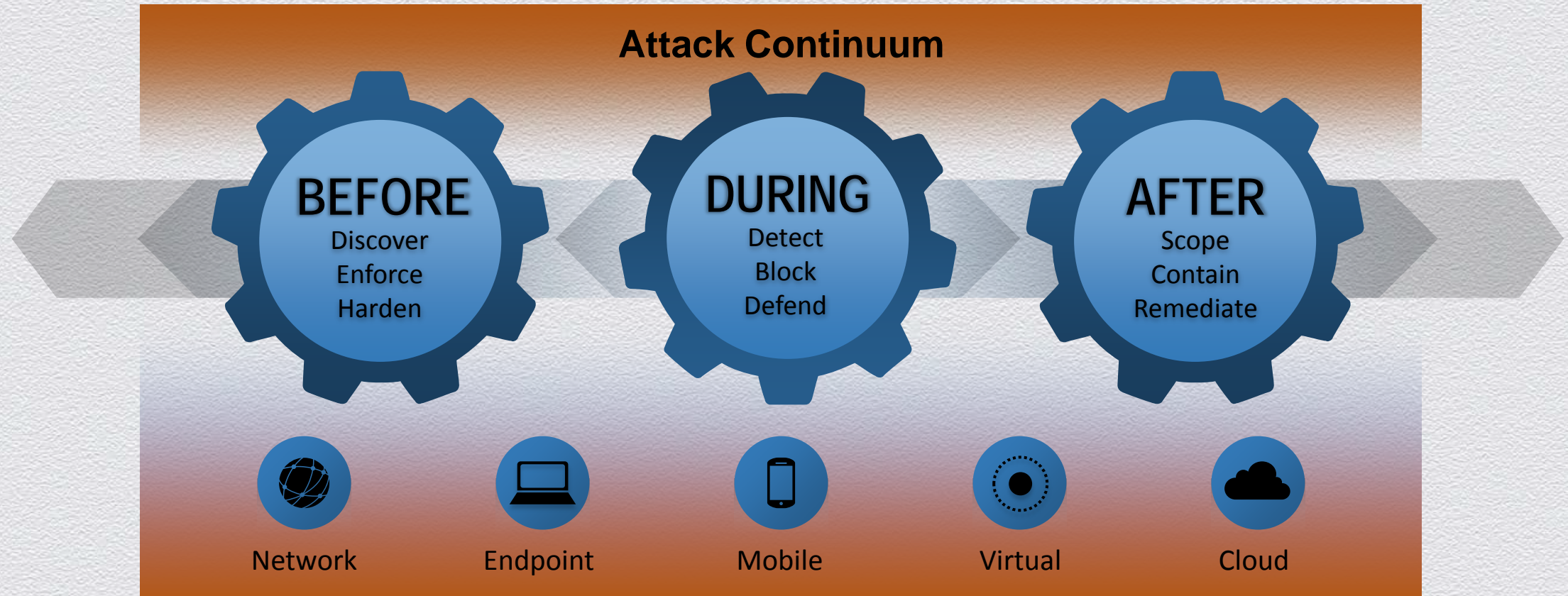


Would you do security differently if you knew you were going to be compromised?

The New Security Model



The New Security Model



— ● —
Point in Time

∞
Continuous

Lessons of the Attack Continuum

- ◆ Security Technologies have a Scope of Application
- ◆ Due to Scope, there can be no Silver Bullet technologies
- ◆ An advanced, modern approach to security will share information and capabilities across all phases of the Attack Continuum

Strategic Imperatives

Visibility-Driven



Network-Integrated,
Broad Sensor Base,
Context and Automation

Threat-Focused



Continuous Advanced Threat
Protection, Cloud-Based
Security Intelligence

Platform-Based



Agile and Open Platforms,
Built for Scale, Consistent Control,
Management



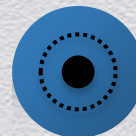
Network



Endpoint



Mobile

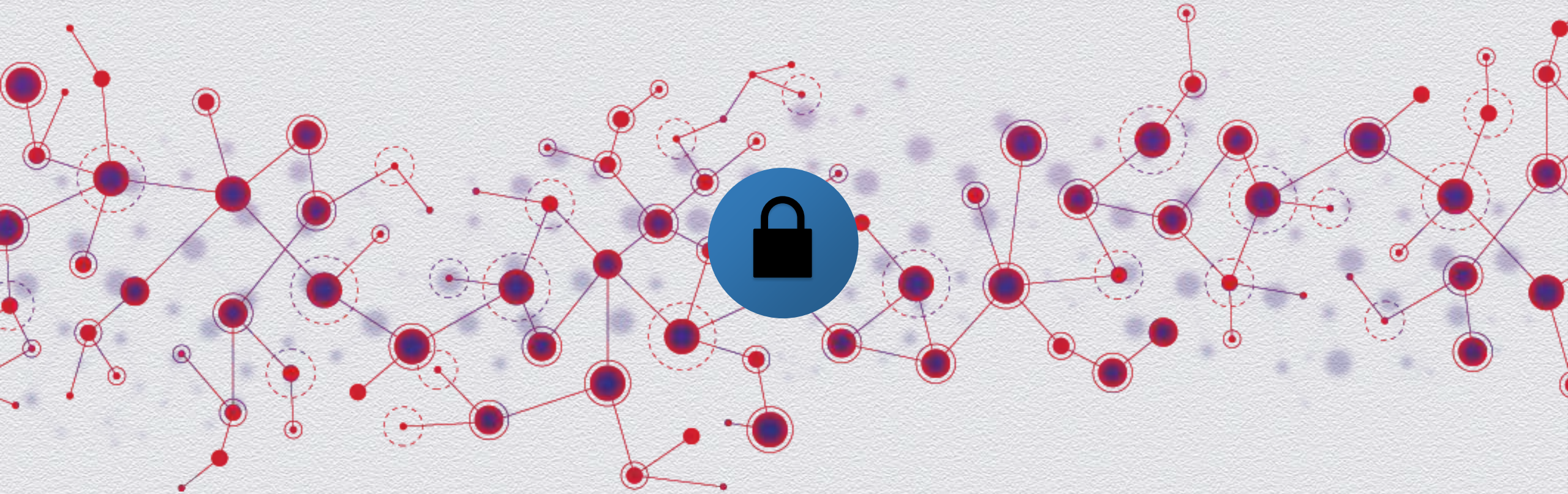


Virtual



Cloud

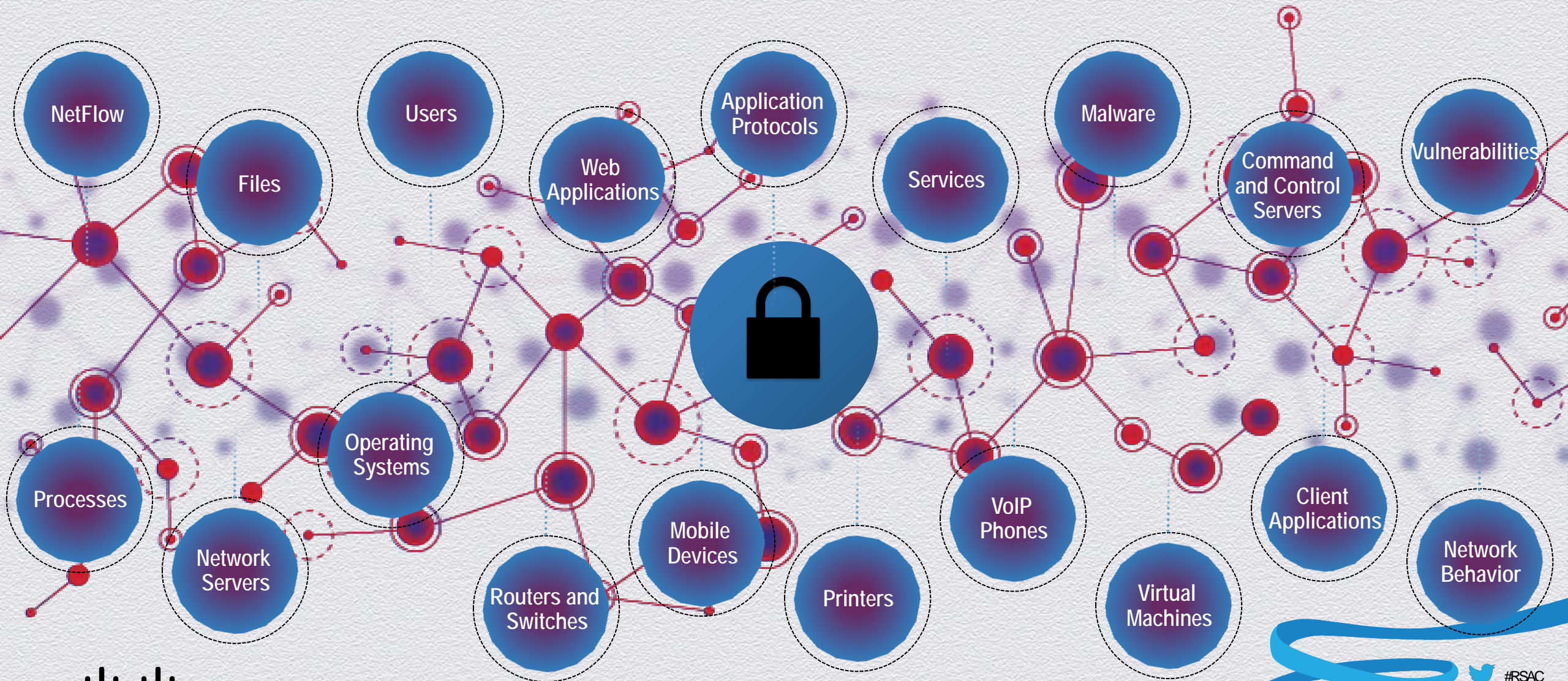
Visibility-Driven



Need Both Breadth and Depth



You Can't Protect What You Can't See



Threat-Focused



Detect, Understand, and Stop Threats



Continuous Advanced Threat Protection



Context

ISE + Network, Appliances (NGFW/NGIPS)

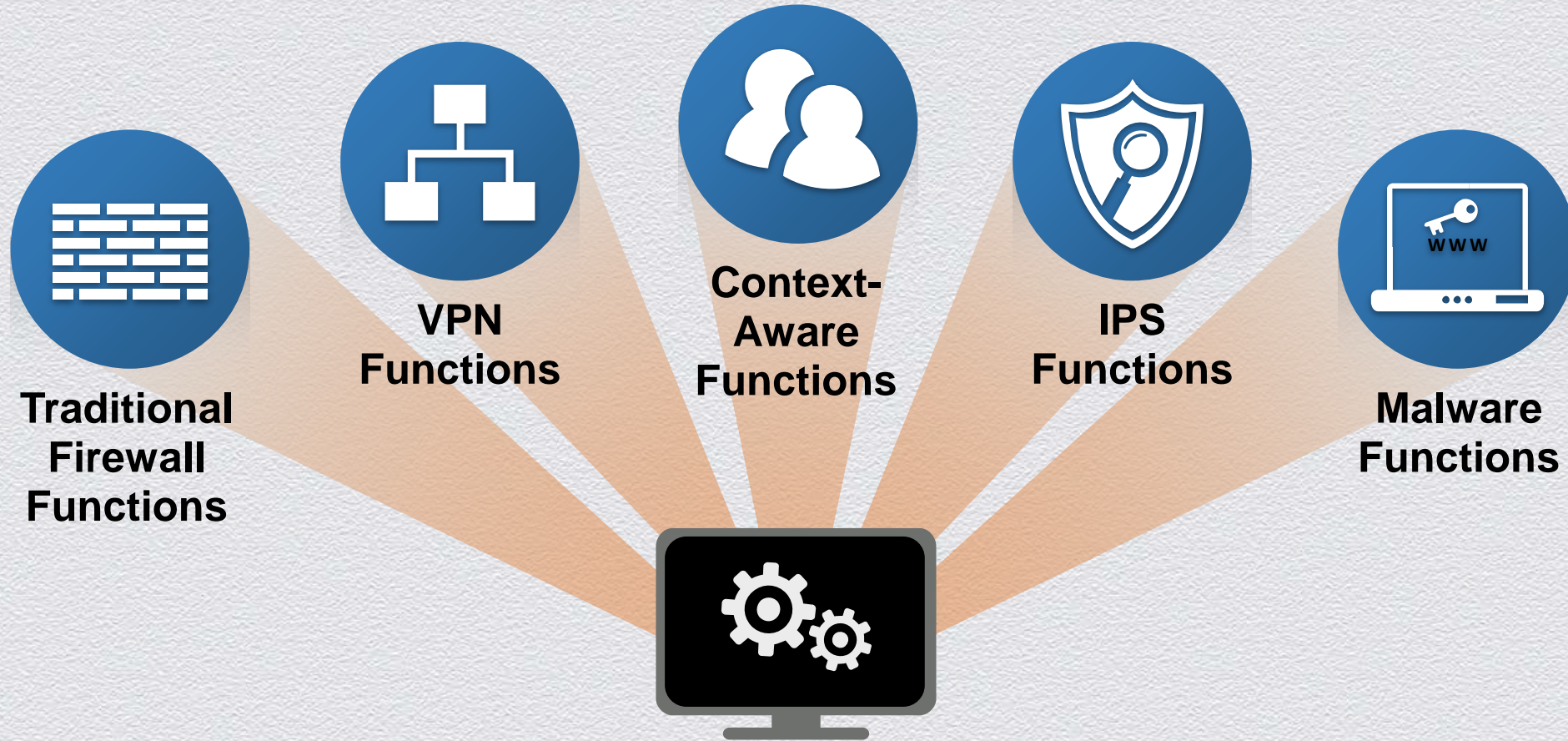
Enforcement

AMP, CWS, Appliances

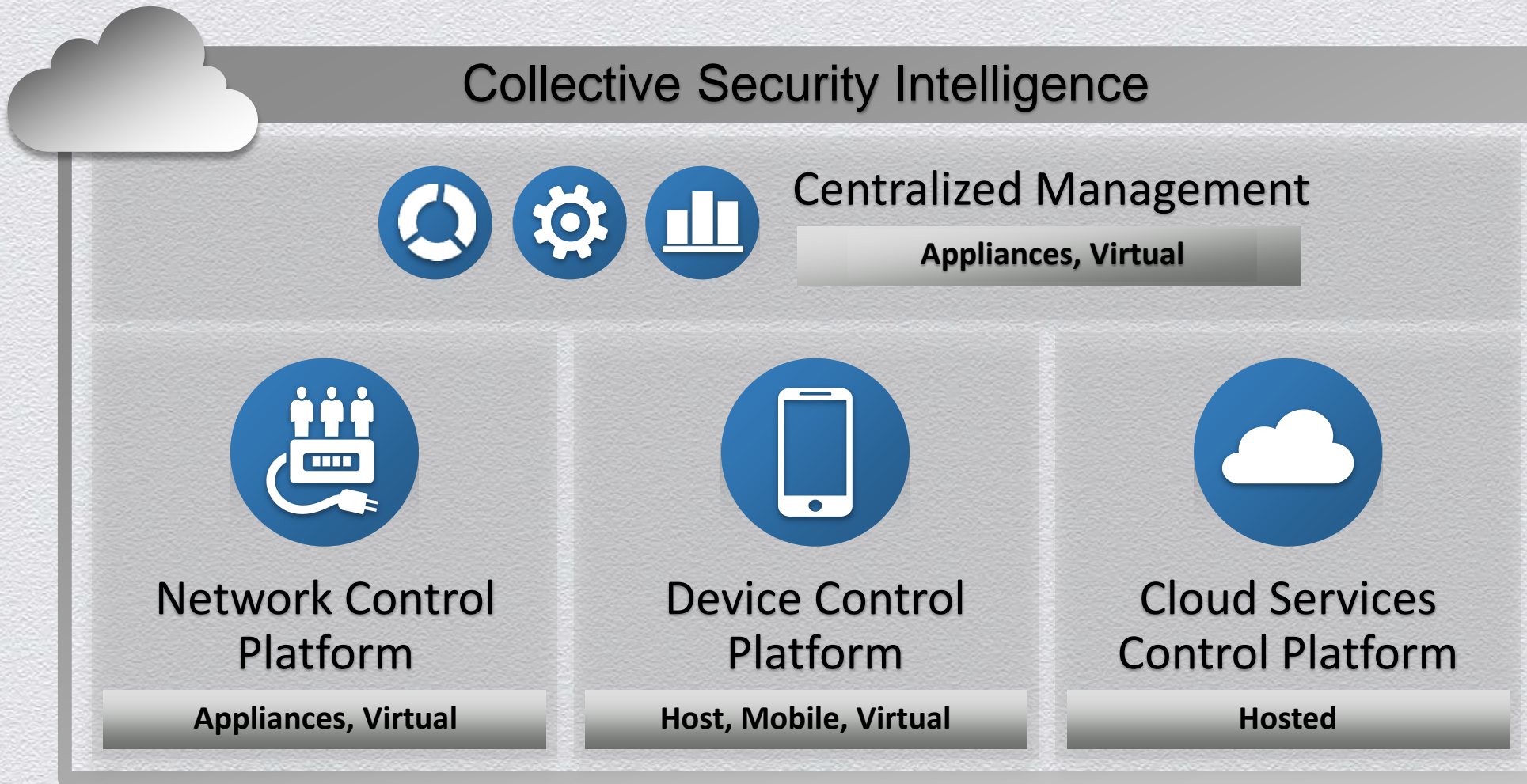
Continuous Analysis

AMP, Threat Defense

Today's Security Appliances



Reduce Complexity and Increase Capability



Only Cisco Delivers

**Unmatched
Visibility**



Global Intelligence
With Context

**Continuous
Capability**



Point-in-Time and
Continuous
Protection Across
the Network and
Data Center

**Advanced Threat
Protection**



Detects and Stops
Advanced Threats

**Complexity
Reduction**



Fits and Adapts
to Changing
Business Models
where ever the
Threat Manifests

Thank you.



#RSAC

RSA CONFERENCE 2014