

VYATTA, INC.



Vyatta System

# Guide to Vyatta Documentation



Vyatta  
Suite 200  
1301 Shoreway Road  
Belmont, CA 94002  
[vyatta.com](http://vyatta.com)  
650 413 7200  
1 888 VYATTA 1 (US and Canada)

## **COPYRIGHT**

Copyright © 2005–2011 Vyatta, Inc. All rights reserved.

Vyatta reserves the right to make changes to software, hardware, and documentation without notice. For the most recent version of documentation, visit the Vyatta web site at [vyatta.com](http://vyatta.com).

## **PROPRIETARY NOTICES**

Vyatta is a registered trademark of Vyatta, Inc.

VMware, VMware ESX, and VMware server are trademarks of VMware, Inc.

XenServer, and XenCenter are trademarks of Citrix Systems, Inc.

All other trademarks are the property of their respective owners.

RELEASE DATE: February 2011

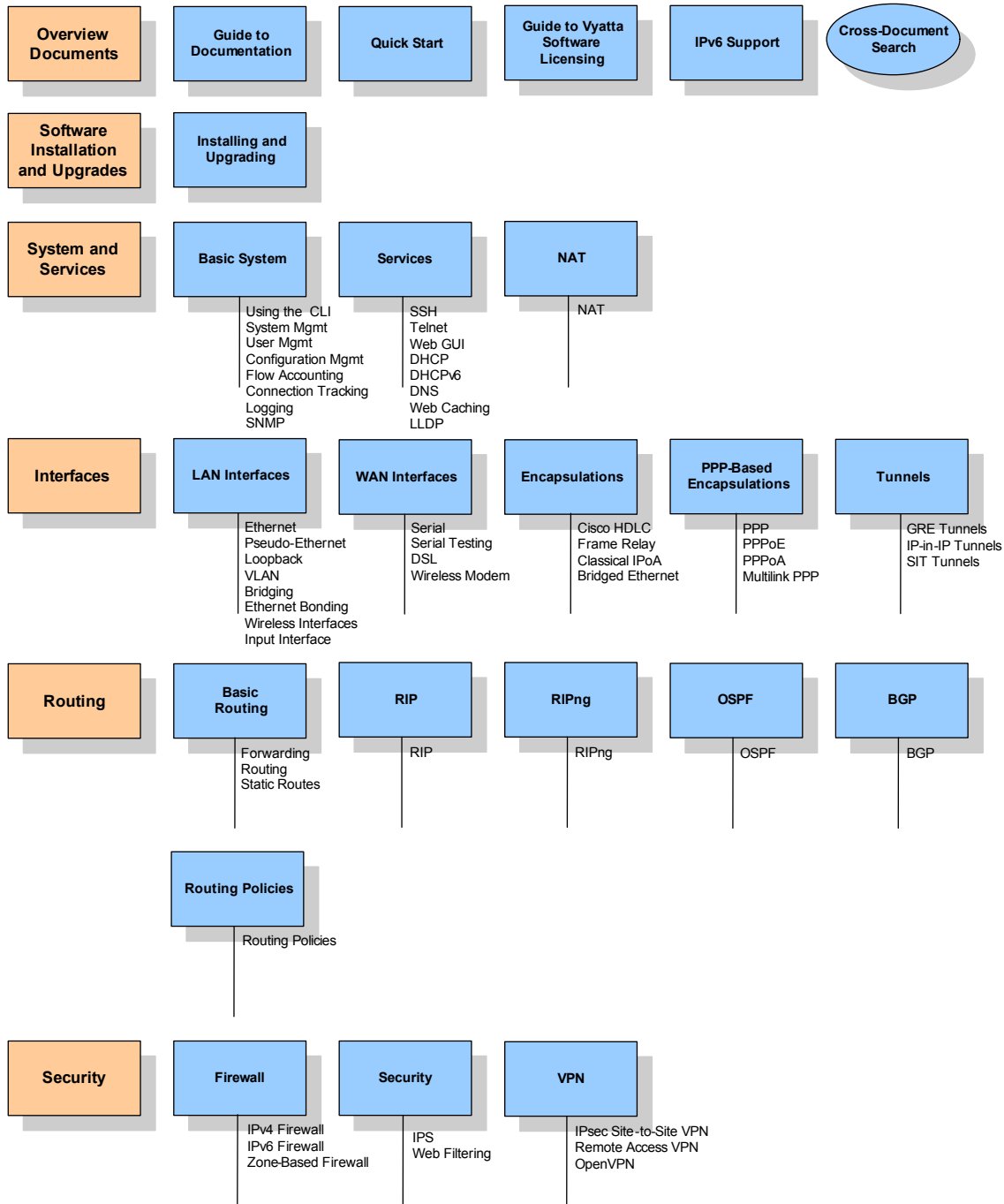
DOCUMENT REVISION: R6.2 v01

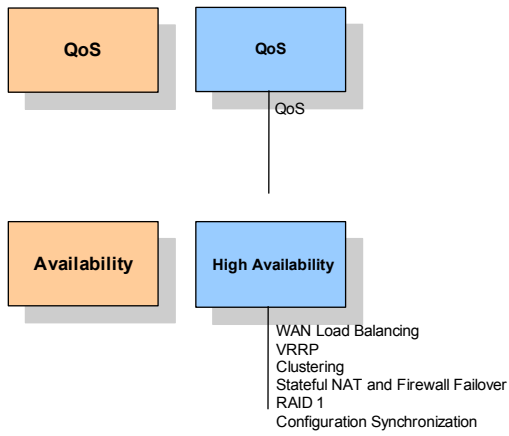
RELEASED WITH: R6.2.0

PART NO. A0-0225-10-0008

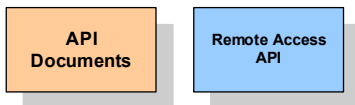
# Documentation Map

## Vyatta Software Documentation

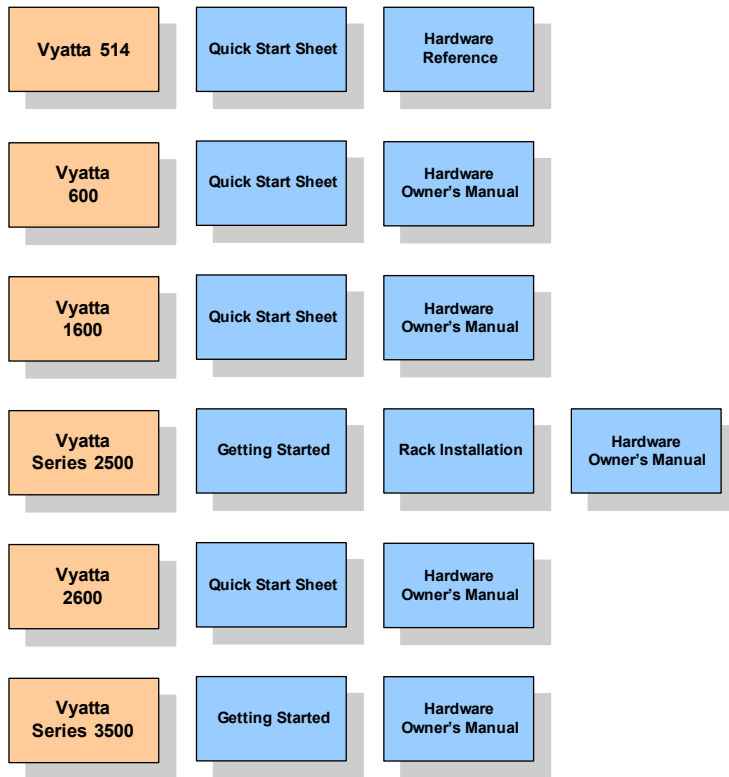




### Vyatta API Documentation



### Vyatta Hardware Documentation



# Documentation Library Overview

The Vyatta technical library includes the following documents:

<b>Software Documentation</b>	
<b>Overview Documents</b>	
Guide to Vyatta Documentation	A graphical “map” of Vyatta product documentation, plus a brief description of each guide.
Vyatta System Quick Start Guide	Deployment options, instructions for installing the Vyatta software, introduction to user interface options, and configuration scenarios to get you started.
Guide to Vyatta Software Licensing	A description of Vyatta’s software licensing model and Entitlement infrastructure.
Vyatta Guide to IPv6 Support	Vyatta’s support for features of the IPv6 protocol.
Cross-Document Search	The cross-document search index lets you search for a word or phrase across the entire all the documents in the software documentation set. To use the search index, extract the zip file in the same folder as the PDF software guides. Open the PDX file, enter the search phrase in the search bar, and click Search.
<b>Software Installation and Upgrades</b>	
Vyatta System Installing and Upgrading Reference Guide	Commands and detailed procedures for installing and upgrading Vyatta software.
<b>System and Services</b>	
Vyatta Basic System Reference Guide	Using the CLI, system management, user management, configuration management, flow accounting, SNMP, and logging.
Vyatta Services Reference Guide	SSH, Telnet, Web GUI Access, DHCP, DHCPv6, DNS, Web caching, and LLDP.
Vyatta NAT Reference Guide	NAT.
<b>Interfaces</b>	
Vyatta LAN Interfaces Reference Guide	Ethernet interfaces, pseudo-Ethernet interfaces, the loopback interface, VLAN interfaces, bridge interfaces and bridge groups, Ethernet link bonding, Wireless, and Input interfaces.
Vyatta WAN Interfaces Reference Guide	Basic serial interface configuration, T1, T3, E1, E3, synchronous serial, serial loopback tests, BERTs, DSL interfaces, and wireless modem interfaces.

Vyatta Encapsulations Reference Guide	Cisco HDLC, Frame Relay, Classical IPOA, and RFC 2684 bridged Ethernet.
Vyatta PPP-Based Encapsulations Reference Guide	PPP, PPPoE, PPPoA, and multilink PPP.
Vyatta Tunnels Reference Guide	GRE, IP-in-IP, and SIT tunnels.
<b>Routing</b>	
Vyatta Basic Routing Reference Guide	Commands for showing routing and forwarding information; static routes.
Vyatta RIP Reference Guide	Routing Information Protocol (RIP) commands and configuration examples.
Vyatta RIPng Reference Guide	Routing Information Protocol next generation (RIPng) commands and configuration examples.
Vyatta OSPF Reference Guide	OSPF (Open Shortest Path First) commands and configuration examples.
Vyatta BGP Reference Guide	Border Gateway Protocol (BGP) commands and configuration examples.
Vyatta Routing Policies Reference Guide	Routing policies.
<b>Security</b>	
Vyatta Firewall Reference Guide	IPv4 firewall, IPv6 firewall, and zone-based firewall.
Vyatta Security Reference Guide	Intrusion detection and prevention and web filtering.
Vyatta VPN Reference Guide	IPsec site-to-site VPN, IPsec and PPTP remote access VPN, and OpenVPN.
<b>QoS</b>	
Vyatta QoS Reference Guide	Traffic shaping, scheduling algorithms, and congestion avoidance.
<b>Availability</b>	
Vyatta High Availability Reference Guide	WAN load balancing, clustering, VRRP, stateful NAT and firewall failover, RAID 1, and configuration synchronization.
<b>API Documentation</b>	
<b>API Documents</b>	
Remote Access API	How to remotely control a Vyatta device via its programming interface.

<b>Hardware Documentation</b>	
<b>Vyatta 514</b>	
Vyatta 514 Quick Start Sheet	A fold-out sheet for getting the Vyatta 514 up and running.
Vyatta 514 Hardware Reference	How to install and set up Vyatta 514 hardware.
<b>Vyatta 600</b>	
Vyatta 600 Quick Start Sheet	A quick guide for getting the Vyatta 600 up and running.
Vyatta 600 Hardware Owner's Manual	Provides reference information for Vyatta 600 hardware.
<b>Vyatta 1600</b>	
Vyatta 1600 Quick Start Sheet	A quick guide for getting the Vyatta 1600 up and running.
Vyatta 1600 Hardware Owner's Manual	Provides reference information for Vyatta 1600 hardware.
<b>Vyatta Series 2500</b>	
Vyatta Series 2500 Getting Started Guide	Lists the major features of Vyatta Series 2500 hardware and explains how to quickly install and configure the system.
Vyatta Series 2500 Rack Installation Guide	Explains how to set up the rack and rack-mount Vyatta Series 2500 hardware.
Vyatta Series 2500 Hardware Owner's Manual	Provides reference information for Vyatta Series 2500 hardware.
<b>Vyatta 2600</b>	
Vyatta 2600 Quick Start Sheet	A quick guide for getting the Vyatta 2600 up and running.
Vyatta 2600 Hardware Owner's Manual	Provides reference information for Vyatta 2600 hardware.
<b>Vyatta Series 3500</b>	
Vyatta Series 3500 Getting Started Guide	Lists the major features of Vyatta Series 3500 hardware and explains how to quickly install and configure the system.
Vyatta Series 3500 Hardware Owner's Manual	Provides reference information for Vyatta Series 3500 hardware.