

VYATTA, INC.



Vyatta System

Guide to Vyatta Documentation



Vyatta
Suite 200
1301 Shoreway Road
Belmont, CA 94002
vyatta.com
650 413 7200
1 888 VYATTA 1 (US and Canada)

COPYRIGHT

Copyright © 2005–2012 Vyatta, Inc. All rights reserved.

Vyatta reserves the right to make changes to software, hardware, and documentation without notice. For the most recent version of documentation, visit the Vyatta web site at vyatta.com.

PROPRIETARY NOTICES

Vyatta is a registered trademark of Vyatta, Inc.

VMware, VMware ESX, and VMware server are trademarks of VMware, Inc.

XenServer, and XenCenter are trademarks of Citrix Systems, Inc.

All other trademarks are the property of their respective owners.

RELEASE DATE: March 2012

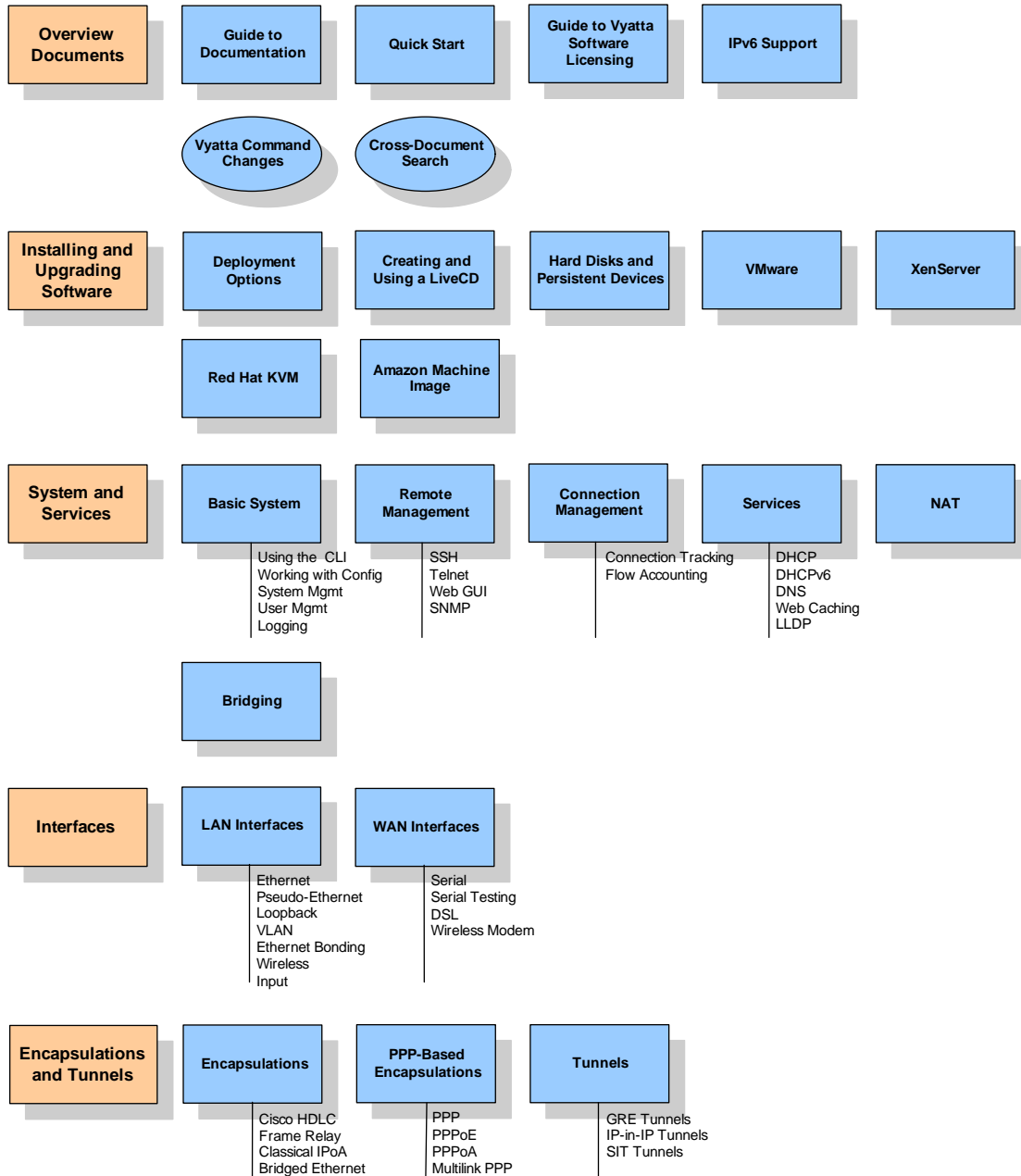
DOCUMENT REVISION: R6.4 v01

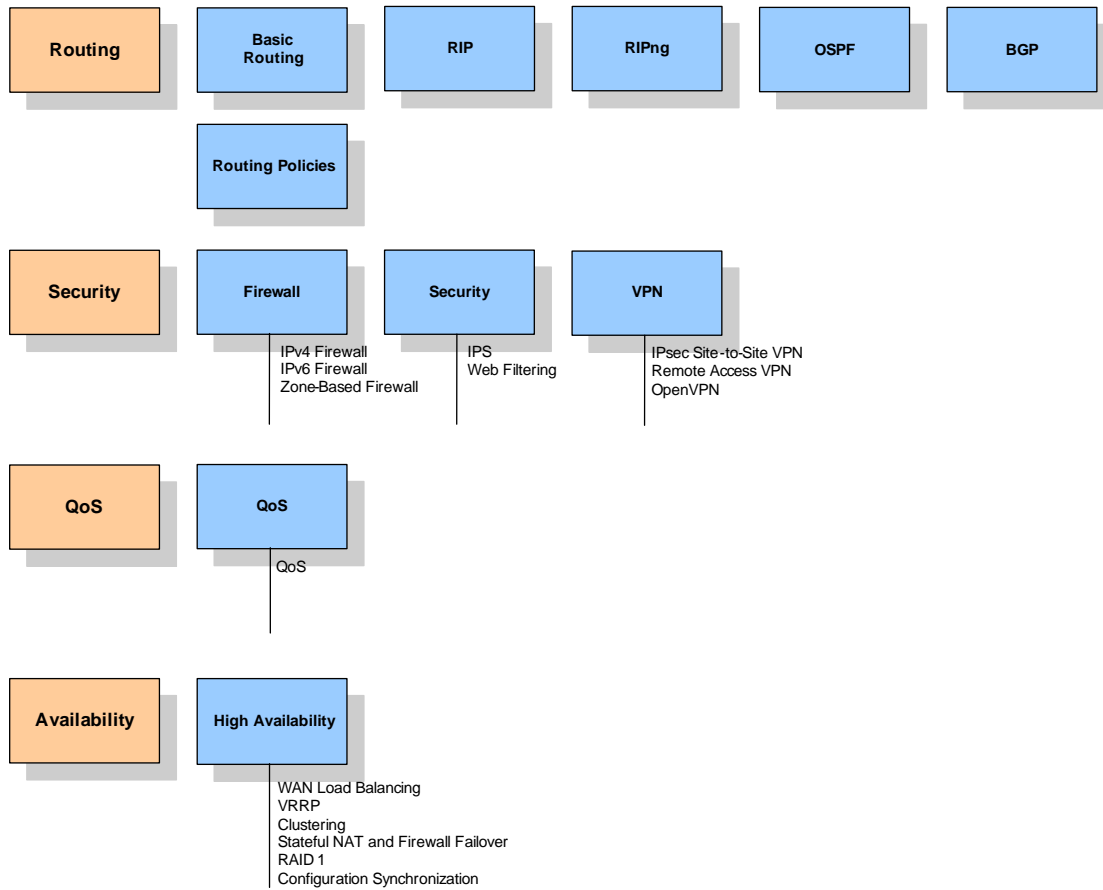
RELEASED WITH: R6.4.0

PART NO. A0-0225-10-0012

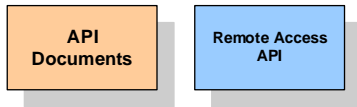
Documentation Map

Vyatta Software Documentation

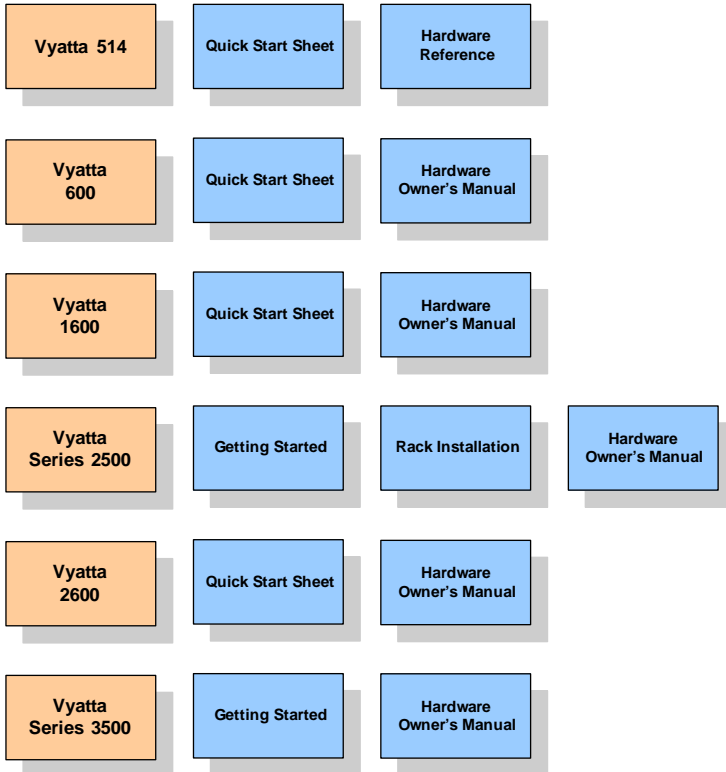




Vyatta API Documentation



Vyatta Hardware Documentation



Documentation Library Overview

The Vyatta technical library includes the following documents:

Software Documentation	
Overview Documents	
<i>Guide to Vyatta Documentation</i>	A graphical “map” of Vyatta product documentation, plus a brief description of each guide.
<i>Vyatta System Quick Start Guide</i>	Instructions for installing the Vyatta software, introduction to user interface options, and configuration scenarios to get you started.
<i>Guide to Vyatta Software Licensing</i>	A description of Vyatta’s software licensing model and Entitlement infrastructure.
<i>Vyatta Guide to IPv6 Support</i>	Vyatta’s support for features of the IPv6 protocol.
<i>Guide to Vyatta CLI Changes</i>	The Vyatta Command Changes document assists you in tracking changes made to the Vyatta CLI over time, listing any deprecated or obsoleted commands and mapping renamed commands onto their new names. To facilitate easy searching and sorting, this document is delivered as a spreadsheet.
<i>Cross-Document Search Utility</i>	The cross-document search index lets you search for a word or phrase across the entire all the documents in the software documentation set. To use the search index, extract the zip file in the same folder as the PDF software guides. Open the PDX file, enter the search phrase in the search bar, and click Search.
Software Installation and Upgrades	
<i>Installing the System: Deployment Options</i>	Options for deploying the Vyatta system.
<i>Installing the System: Creating and Using a LiveCD</i>	Detailed procedures for creating and using a Vyatta LiveCD.
<i>Installing and Upgrading: Hard Disks and Persistent Devices</i>	Detailed procedures for installing and upgrading Vyatta’s system image for persistent devices.
<i>Installing and Upgrading: VMware</i>	Detailed procedures for installing and upgrading Vyatta’s system image for VMware.
<i>Installing and Upgrading: XenServer</i>	Detailed procedures for installing and upgrading Vyatta’s system image for XenServer.
<i>Installing and Upgrading: RedHat KVM</i>	Detailed procedures for installing and upgrading Vyatta’s system image for KVM on the Red Hat Kernel-based Virtual Machine (KVM) hypervisor.

<i>Installing the System/User Guide: Amazon Machine Interface</i>	Detailed procedures for installing, upgrading, and operating Vyatta's Amazon Machine Image (AMI) within the Amazon Web Services cloud.
System and Services	
<i>Vyatta Basic System Reference Guide</i>	Using the CLI, working with configuration, system management, user management, and logging.
<i>Vyatta Remote Management Reference Guide</i>	SSH, Telnet, Web GUI Access, and SNMP.
<i>Vyatta Connection Management Reference Guide</i>	Connection tracking and flow accounting.
<i>Vyatta Services Reference Guide</i>	DHCP, DHCPv6, DNS, Web caching, and LLDP.
<i>Vyatta Bridging Reference Guide</i>	Bridging.
<i>Vyatta NAT Reference Guide</i>	NAT.
Interfaces	
<i>Vyatta LAN Interfaces Reference Guide</i>	Ethernet interfaces, pseudo-Ethernet interfaces, the loopback interface, VLAN interfaces, bridge interfaces and bridge groups, Ethernet link bonding, Wireless, and Input interfaces.
<i>Vyatta WAN Interfaces Reference Guide</i>	Basic serial interface configuration, T1, T3, E1, E3, synchronous serial, serial loopback tests, BERTs, DSL interfaces, and wireless modem interfaces.
<i>Vyatta Encapsulations Reference Guide</i>	Cisco HDLC, Frame Relay, Classical IPOA, and RFC 2684 bridged Ethernet.
<i>Vyatta PPP-Based Encapsulations Reference Guide</i>	PPP, PPPoE, PPPoA, and multilink PPP.
<i>Vyatta Tunnels Reference Guide</i>	GRE, IP-in-IP, and SIT tunnels.
Routing	
<i>Vyatta Basic Routing Reference Guide</i>	Commands for showing routing and forwarding information; static routes.
<i>Vyatta RIP Reference Guide</i>	Routing Information Protocol (RIP) commands and configuration examples.
<i>Vyatta RIPng Reference Guide</i>	Routing Information Protocol next generation (RIPng) commands and configuration examples.
<i>Vyatta OSPF Reference Guide</i>	OSPF (Open Shortest Path First) commands and configuration examples.

<i>Vyatta BGP Reference Guide</i>	Border Gateway Protocol (BGP) commands and configuration examples.
<i>Vyatta Routing Policies Reference Guide</i>	Routing policies.
Security	
<i>Vyatta Firewall Reference Guide</i>	IPv4 firewall, IPv6 firewall, and zone-based firewall.
<i>Vyatta Security Reference Guide</i>	Intrusion detection and prevention and web filtering.
<i>Vyatta VPN Reference Guide</i>	IPsec site-to-site VPN, IPsec and PPTP remote access VPN, and OpenVPN.
QoS	
<i>Vyatta QoS Reference Guide</i>	Traffic shaping, scheduling algorithms, and congestion avoidance.
Availability	
<i>Vyatta High Availability Reference Guide</i>	WAN load balancing, clustering, VRRP, stateful NAT and firewall failover, RAID 1, and configuration synchronization.
API Documentation	
API Documents	
Remote Access API	How to remotely control a Vyatta device via its programming interface.

Hardware Documentation	
Vyatta 514	
Vyatta 514 Quick Start Sheet	A fold-out sheet for getting the Vyatta 514 up and running.
Vyatta 514 Hardware Reference	How to install and set up Vyatta 514 hardware.
Vyatta 600	
Vyatta 600 Quick Start Sheet	A quick guide for getting the Vyatta 600 up and running.
Vyatta 600 Hardware Owner's Manual	Provides reference information for Vyatta 600 hardware.
Vyatta 1600	
Vyatta 1600 Quick Start Sheet	A quick guide for getting the Vyatta 1600 up and running.
Vyatta 1600 Hardware Owner's Manual	Provides reference information for Vyatta 1600 hardware.
Vyatta Series 2500	
Vyatta Series 2500 Getting Started Guide	Lists the major features of Vyatta Series 2500 hardware and explains how to quickly install and configure the system.
Vyatta Series 2500 Rack Installation Guide	Explains how to set up the rack and rack-mount Vyatta Series 2500 hardware.
Vyatta Series 2500 Hardware Owner's Manual	Provides reference information for Vyatta Series 2500 hardware.
Vyatta 2600	
Vyatta 2600 Quick Start Sheet	A quick guide for getting the Vyatta 2600 up and running.
Vyatta 2600 Hardware Owner's Manual	Provides reference information for Vyatta 2600 hardware.
Vyatta Series 3500	
Vyatta Series 3500 Getting Started Guide	Lists the major features of Vyatta Series 3500 hardware and explains how to quickly install and configure the system.
Vyatta Series 3500 Hardware Owner's Manual	Provides reference information for Vyatta Series 3500 hardware.