



Citrix XenServer® 7.3 Installation Guide

Published December 2017
1.0 Edition



Citrix XenServer® 7.3 Installation Guide

© 1999-2017 Citrix Systems, Inc. All Rights Reserved.
Version: 7.3

Citrix Systems, Inc.
851 West Cypress Creek Road
Fort Lauderdale, FL 33309
United States of America

Disclaimers

This document is furnished "AS IS." Citrix Systems, Inc. disclaims all warranties regarding the contents of this document, including, but not limited to, implied warranties of merchantability and fitness for any particular purpose. This document may contain technical or other inaccuracies or typographical errors. Citrix Systems, Inc. reserves the right to revise the information in this document at any time without notice. This document and the software described in this document constitute confidential information of Citrix Systems, Inc. and its licensors, and are furnished under a license from Citrix Systems, Inc.

Citrix Systems, Inc., the Citrix logo, Citrix XenServer and Citrix XenCenter, are trademarks of Citrix Systems, Inc. and/or one or more of its subsidiaries, and may be registered in the United States Patent and Trademark Office and in other countries. All other trademarks and registered trademarks are property of their respective owners.

Trademarks

Citrix®
XenServer®
XenCenter®

Contents

1. Welcome	1
1.1. About This Document	1
1.2. Introducing XenServer	1
1.2.1. Benefits of Using XenServer	1
1.2.2. Administering XenServer	1
2. Before you start	3
2.1. XenServer Release Streams	3
2.2. Installation Methods	3
2.3. System Requirements	4
2.3.1. System Requirements	4
2.3.1.1. XenServer Host System Requirements	4
2.3.1.2. XenCenter System Requirements	5
2.3.1.3. Supported Guest Operating Systems	6
3. Licensing XenServer	7
3.1. Additional Licensing Information	9
4. Installing XenServer and XenCenter	10
4.1. Installation Media and Methods	10
4.2. Installing the XenServer host	11
4.2.1. XenServer host Partition Layout	14
4.3. Installing XenCenter	16
4.4. Connecting XenCenter to the XenServer host	16
5. Installation and Deployment Scenarios	17
5.1. XenServer hosts with Local Storage	17
5.2. Pools of XenServer hosts with Shared Storage	18
5.2.1. XenServer hosts with Shared NFS Storage	18
5.2.2. XenServer hosts with Shared iSCSI Storage	19
6. Upgrading from an existing version of XenServer	22
6.1. Rolling Pool Upgrades	22

6.1.1. Upgrading XenServer hosts by using the XenCenter Rolling Pool Upgrade Wizard	23
6.1.2. Upgrading XenServer hosts by using the xe CLI	24
6.1.2.1. Planning an Upgrade Path	24
6.1.2.2. Performing Rolling Pool Upgrades by using the xe CLI	25
6.2. Upgrading a Single XenServer host by using the xe CLI	26
6.2.1. Before You Upgrade a Single XenServer host	26
6.2.2. Upgrading a Single XenServer host by using the xe CLI	27
7. Updating XenServer	28
7.1. Types of Update	28
7.2. Preparing a Pool for an Update	29
7.3. Applying Updates to a Pool	29
7.3.1. Applying Updates Automatically	29
7.3.2. Viewing Available Updates	30
7.3.3. Applying an Update to a Pool	30
7.3.4. Updating a Pool of XenServer hosts by using the xe CLI	31
7.3.5. Updating Individual Hosts by using the xe CLI	32
7.4. Applying Automated Updates	32
7.5. Live Patching in XenServer	34
7.5.1. Live Patching Scenarios	34
7.5.2. Applying Automated Updates and Live Patching	34
7.5.3. Enabling Live Patching using XenCenter and the xe CLI	35
A. Troubleshooting	36
B. Boot From SAN Environments	37
B.1. Software-boot-from-iSCSI for Cisco UCS	37
B.1.1. Installing XenServer Using CD Media	38
B.1.2. Installing XenServer Using PXE	38
C. Network Boot Installations	40
C.1. Configuring your PXE and UEFI Environment for XenServer Installation	40
C.2. Creating an answer file for unattended PXE and UEFI installation	43



D. Installing XenServer on Small Devices	47
--	----

Chapter 1. Welcome

1.1. About This Document

This document is an installation guide for Citrix XenServer®, the complete server virtualization platform from Citrix®. It contains procedures to guide you through the installation, configuration, and initial operation of XenServer. This document also contains information about troubleshooting problems that might occur during installation and points you to additional resources.

This document is primarily aimed at system administrators who want to set up XenServer hosts on physical servers.

1.2. Introducing XenServer

XenServer is the complete server virtualization platform from Citrix. The XenServer package contains all you need to create and manage a deployment of virtual x86 computers running on Xen, the open-source paravirtualizing hypervisor with near-native performance. XenServer is optimized for both Windows and Linux virtual servers.

XenServer runs directly on server hardware without requiring an underlying operating system, which results in an efficient and scalable system. XenServer works by abstracting elements from the physical machine (such as hard drives, resources and ports) and allocating them to the *virtual machines* running on it.

A virtual machine (VM) is a computer composed entirely of software that can run its own operating system and applications as if it were a physical computer. A VM behaves exactly like a physical computer and contains its own virtual (software-based) CPU, RAM, hard disk and network interface card (NIC).

XenServer lets you create VMs, take VM disk snapshots and manage VM workloads. For a comprehensive list of major XenServer features, visit www.citrix.com/xenserver.

1.2.1. Benefits of Using XenServer

Using XenServer reduces costs by:

- Consolidating multiple VMs onto physical servers
- Reducing the number of separate disk images that need to be managed
- Allowing for easy integration with existing networking and storage infrastructures

Using XenServer increases flexibility by:

- Allowing you to schedule zero downtime maintenance by using XenMotion to live migrate VMs between XenServer hosts
- Increasing availability of VMs by using High Availability to configure policies that restart VMs on another XenServer host if one fails
- Increasing portability of VM images, as one VM image will work on a range of deployment infrastructures

1.2.2. Administering XenServer

There are two methods by which to administer XenServer: XenCenter and the XenServer Command-Line Interface (CLI).

XenCenter is a graphical, Windows-based user interface. XenCenter allows you to manage XenServer hosts, pools and shared storage, and to deploy, manage and monitor VMs from your Windows desktop machine.

The XenCenter on-line *Help* is a useful resource for getting started with XenCenter and for context-sensitive assistance.



The **XenServer Command-line Interface (CLI)** allows you to administer XenServer using the Linux-based `xe` commands.

Chapter 2. Before you start

Before installing XenServer 7.3 consider the following factors:

- Which release stream of XenServer do you want to use?
- What is the appropriate installation method?
- What are the system requirements?

2.1. XenServer Release Streams

XenServer releases are in one of following release streams: Current Release (CR) or Long-Term Service Release (LTSR). XenServer 7.3 is a Current Release. When choosing whether to install a version of XenServer from the CR stream or the LTSR stream, consider how often you want to update your version of XenServer and whether you prefer a stable feature set or the latest feature set.

Current Release

Current Releases of XenServer enable you to consume new features at the earliest possible opportunity. New versions of XenServer from the CR stream are released each quarter. If you are on the CR stream, you must regularly adopt new CRs to remain in support. Most issues discovered in XenServer CR are fixed in a subsequent current release. Security issues are fixed in hotfixes that can be applied to the CR.

If you currently have XenServer 7.2 CR installed, you must update to XenServer 7.3 to continue to receive support.

Long-Term Service Release

Long-Term Service Releases of XenServer guarantee stability in terms of the feature set within XenServer. New versions of XenServer from the LTSR stream are released every two years and are supported for up to ten years. Any issues in XenServer LTSR are fixed in hotfixes or cumulative updates that can be applied to the XenServer LTSR.

If you currently have XenServer 7.1 Cumulative Update 1 LTSR installed, you can upgrade to XenServer 7.3 to take advantage of its new features.

2.2. Installation Methods

XenServer 7.3 is provided as both an update that can be applied to the previous current release (CR) of XenServer and as a base installation that can be used to upgrade an earlier version of XenServer or to create a fresh installation.

Existing version of XenServer	How to get XenServer 7.3
None	Fresh installation
7.2 CR	Update
7.1 Cumulative Update 1 LTSR, 7.0, 6.5.0, 6.2.0	Upgrade

Fresh installation

If you are creating a fresh installation of XenServer 7.3:

- Use the XenServer 7.3 Base Installation ISO file.

You can download this file from the [Citrix download site](#)



- Review the information in [Section 2.3, “System Requirements”](#), [Chapter 3, *Licensing XenServer*](#), and [Chapter 4, *Installing XenServer and XenCenter*](#) before installing XenServer.

Update

If you are updating the previous current release of XenServer 7.2 to XenServer 7.3:

- Use the XenServer 7.3 Update ISO file.

You can download this file from the [Citrix download site](#)

- Review the information in [Chapter 7, *Updating XenServer*](#) before updating XenServer.

Upgrade

If you are upgrading from XenServer 7.1 Cumulative Update 1, 7.0, 6.5.0, or 6.2.0 to XenServer 7.3:

- Use the XenServer 7.3 Base Installation ISO file.

You can download this file from the [Citrix download site](#)

- Review the information in [Section 2.3, “System Requirements”](#) and [Chapter 6, *Upgrading from an existing version of XenServer*](#) before upgrading XenServer.

2.3. System Requirements

2.3.1. System Requirements

XenServer requires at least two separate physical x86 computers: one to be the XenServer host and the other to run the XenCenter application or the XenServer Command-Line Interface (CLI). The XenServer host computer is dedicated entirely to the task of running XenServer — hosting VMs — and is **not** used for other applications.

Warning:

The installation of any third-party software directly on the XenServer host (i.e. into the dom0 control domain) is not supported, except where it is supplied as a supplemental pack and is explicitly endorsed by Citrix.

The computer that runs XenCenter can be any general-purpose Windows system that satisfies the hardware requirements and can be used to run other applications. When you install XenCenter on this system, the XenServer CLI is also installed.

A standalone remote XenServer CLI can be installed on any general purpose Linux system.

2.3.1.1. XenServer Host System Requirements

While XenServer will generally be deployed on server-class hardware, XenServer is also compatible with many models of workstations and laptops. For a comprehensive XenServer hardware compatibility list, see <http://www.citrix.com/xenserver/hcl>. The following describes the recommended XenServer hardware specifications.

The XenServer host must be a 64-bit x86 server-class machine devoted to hosting VMs. XenServer creates an optimized and hardened Linux partition with a Xen-enabled kernel which controls the interaction between the virtualized devices seen by VMs and the physical hardware.

XenServer can make use of:

- up to 5TB of RAM
- up to 16 NICs
- up to 288 logical processors per host.



Note:

The maximum number of logical processors supported differs by CPU. Consult the [XenServer Hardware Compatibility List](#) (HCL) for more details.

The system requirements for the XenServer host are:

CPU(s)	<p>One or more 64-bit x86 CPU(s), 1.5GHz minimum, 2 GHz or faster multicore CPU recommended</p> <p>To support VMs running Windows or more recent versions of Linux, an Intel VT or AMD-V 64-bit x86-based system with one or more CPU(s) is required.</p> <p>Note:</p> <p>To run Windows VMs or more recent versions of Linux, hardware support for virtualization must be enabled on the XenServer host. This is an option in the BIOS. It is possible your BIOS might have virtualization support disabled. Consult your BIOS documentation for more details.</p> <p>To support VMs running supported paravirtualized Linux, a standard 64-bit x86-based system with one or more CPU(s) is required.</p>
RAM	2GB minimum, 4GB or more recommended
Disk Space	Locally attached storage (PATA, SATA, SCSI) with 46GB of disk space minimum, 70GB of disk space recommended, or SAN via HBA (not through software) if installing with multipath boot from SAN(see http://hcl.vmd.citrix.com for a detailed list of compatible storage solutions).
Network	<p>100Mbit/s or faster NIC. One or more gigabit, or 10 gigabit NIC(s) is recommended for faster P2V and export/import data transfers and VM live migration.</p> <p>For redundancy, multiple NICs are recommended. The configuration of NICs will differ depending on the storage type. See vendor documentation for details.</p>

Note:

Ensure that the time setting in the BIOS of your server is set to the current time in UTC.

Note:

In some support cases, serial console access is required for debug purposes. Therefore, when setting up the XenServer configuration, it is recommended that serial console access is configured. For hosts that do not have physical serial port (such as a Blade server) or where suitable physical infrastructure is not available, customers should investigate if an embedded management device, such as Dell DRAC or HP iLO can be configured. For more information on setting up serial console access, see CTX228930, [How to Configure Serial Console Access on XenServer 7.0 and later](#).

2.3.1.2. XenCenter System Requirements

The system requirements for XenCenter are:

Operating System	Windows 10, Windows 8.1, Windows 7 SP1, Windows Server 2012R2, Windows Server 2012, Windows Server 2008R2 SP1, Windows Server 2008 SP2
------------------	--



.NET Framework	Version 4.6
CPU Speed	750MHz minimum, 1GHz or faster recommended
RAM	1GB minimum, 2GB or more recommended
Disk Space	100MB minimum
Network	100Mb or faster NIC
Screen Resolution	1024x768 pixels, minimum

XenCenter is compatible with all versions of XenServer from 6.2.0 onwards.

2.3.1.3. Supported Guest Operating Systems

For a list of supported VM operating systems, see the *XenServer Virtual Machine User's Guide*.

Chapter 3. Licensing XenServer

XenServer 7.3 is available in two commercial editions:

- Standard
- Enterprise

The **Standard** edition is our entry-level commercial offering, with a range of features that will suit the needs of those customers who want a robust and high performing virtualization platform, but do not require the premium features offered by the Enterprise edition; while still wishing to benefit from the assurance of comprehensive Citrix support and maintenance.

The **Enterprise** edition is our premium offering, optimized for desktop, server and cloud workloads. In addition to the features available in the Standard edition, the Enterprise edition offers the following features:

- Automated Windows VM Driver Updates
- Automatic updating of the Management Agent
- Support for SMB storage
- Direct Inspect APIs
- Dynamic Workload Balancing
- GPU Virtualization (vGPU) with NVIDIA GRID and Intel GVT-g
- VMware vSphere to XenServer Conversion utilities
- Intel Secure Measured Boot (TXT)
- Export Pool Resource Data
- In-memory Read Caching
- PVS-Accelerator
- Automated Updates using XenCenter
- XenServer Live Patching
- Changed Block Tracking
- IGMP Snooping

Customers who have purchased XenApp or XenDesktop continue to have an entitlement to XenServer, which includes all the features listed above.

Applying a license

XenServer uses the same licensing mechanism, as used by many other Citrix products. To use all the features of XenServer 7.3 licensing, you require Citrix License Server 11.14 or higher. You can download the License Server from [Citrix Licensing](#). After purchasing a license, you are provided with a .LIC license key. This license key should be installed on either:

- a Windows server running the **Citrix License Server** software.
- the Linux-based **Citrix License Server** virtual appliance.

Customers should allocate product licenses using a Citrix License Server, as with other Citrix components. From version 6.2.0 onwards, XenServer (other than through the XenDesktop licenses) is licensed on a per-socket basis. Allocation of licenses is managed centrally and enforced by a standalone Citrix License Server, physical or virtual, in the environment. After applying a per-socket license, XenServer will display as Citrix XenServer Per-Socket Edition.

All hosts in a pool must be licensed. Mixed pools of licensed and unlicensed hosts will behave as if all hosts were unlicensed. Unlicensed hosts are subject to restrictions. For more information, see [XenServer Licensing FAQ](#).

Note:

Upgrades to the Enterprise edition are available from the Standard edition. Click [here](#) to purchase a license for XenServer 7.3.

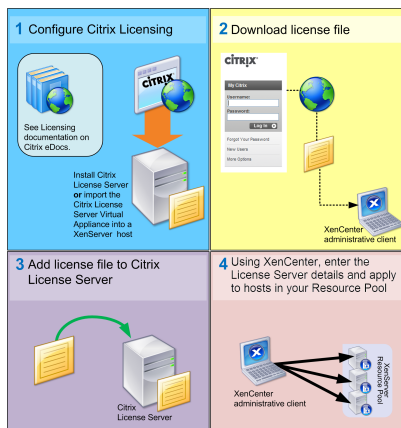
For instructions on applying a XenServer license to a Citrix License Server Virtual Appliance, see [CTX200159](#).

To license Citrix XenServer:

1. Install the Citrix License Server and console.

For detailed installation procedures, see [Licensing](#) on the [Citrix Product Documentation](#) website.

2. Obtain your Citrix XenServer license files and load them on the Citrix License Server.
3. Configure licensing for each Citrix XenServer host using XenCenter or the xe CLI.

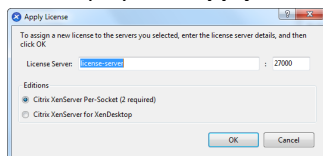


How to configure licensing for Citrix XenServer hosts using XenCenter

For more information on using XenCenter press F1 to access the context sensitive Online Help.

1. On the **Tools** menu, select **License Manager**.
2. Select the host(s) or pool/s that you want to assign a license. Click **Assign License**.

This displays the **Apply License** window:



3. In the **Apply License** window, choose the Citrix XenServer edition that you want to license, and then enter the Citrix License Server details.

Note:

By default, the License Server uses port 27000 for communication with Citrix products. If you changed the default port on the License Server, enter the appropriate number in the **Port number** box. For more information about changing port numbers due to conflicts, see the [Licensing](#) topics on the [Citrix Product Documentation](#) website.

Select **OK** to proceed.

XenCenter contacts the specified License Server and checks out a license for the specified host(s) or pool/s. The information shown in the XenCenter License Manager is updated.

To release a license (to revert a licensed XenServer host to unlicensed XenServer): from the **License Manager**, select a host, and then click **Release License**.



To configure licensing for Citrix XenServer hosts using the xe CLI:

- Run the **host-apply-edition** command. For example, enter the following:

```
xe host-apply-edition edition= enterprise-per-socket|desktop-plus|desktop| \
  standard-per-socket|free license-server-address=<license_server_address> \
  host-uuid=<uuid_of_host> license-server-port=<license_server_port>
```

You are only required to supply the license server IP address and port number parameters the first time you assign a license. These values are stored and used automatically if, in future, you do not specify the license server parameters.

If no host UUID is specified, the license is applied to the host that you are running the command on.

To configure a pool

- Run the **pool-apply-edition** command. For example, enter the following:

```
xe pool-apply-edition edition= enterprise-per-socket|desktop-plus|desktop| \
  standard-per-socket\ license-server-address=<license_server_address> \
  pool-uuid=<uuid_of_pool> license-server-port=<license_server_port>
```

3.1. Additional Licensing Information

This section discusses miscellaneous licensing information, such as, license grace periods and expiry.

For more information, see the *XenServer 7.3 Licensing FAQ* .

License Grace Period

Citrix licensing has built-in timeout technology. After a startup license is checked out by the XenServer host, XenServer and the License Server exchange "heartbeat" messages every five minutes to indicate to each other that they are still up and running. If the XenServer host cannot contact the License Server, for example, due to problems with the License Server hardware or software or network failures, the server lapses into a 30-day licensing grace period. During the grace period, XenServer licenses itself through cached information and the hosts are allowed to continue operations as if they were still in communication with the License Server. The grace period is 30 days and when the grace period runs out, XenServer reverts to an unlicensed state. After communication is re-established between XenServer and the License Server, the grace period is reset.

Expired licenses do not get a grace period.

License Expiry

XenCenter notifies you when your license is due to expire. We recommend that you purchase a new license before your current license expires. When a license for XenServer expires:

- XenCenter License Manager displays the status as Unlicensed.
- you can no longer access licensed features or receive Citrix Technical Support for any host within the pool until you purchase another license.

Chapter 4. Installing XenServer and XenCenter

This chapter steps through installing the XenServer host software on physical servers, installing XenCenter on Windows workstations and finally connecting them to form the infrastructure for creating and running Virtual Machines (VMs).

After guiding you through installation, this chapter describes a selection of common installation and deployment scenarios.

4.1. Installation Media and Methods

XenServer installs directly on bare-metal hardware avoiding the complexity, overhead, and performance bottlenecks of an underlying operating system. It uses the device drivers available from the Linux kernel. As a result, XenServer can run on a wide variety of hardware and storage devices. However, Citrix recommends that you use certified device drivers. For details, see the [XenServer Hardware Compatibility List \(HCL\)](#).

The XenServer host consists of:

- The **Xen Hypervisor**: The hypervisor is the basic abstraction layer of software. The hypervisor is responsible for low-level tasks such as CPU scheduling and is responsible for memory isolation for resident VMs. The hypervisor abstracts from the hardware for the VMs. The hypervisor has no knowledge of networking, external storage devices, video, etc. The [Linux Foundation Xen Project](#) community develops and maintains the Xen hypervisor as free software licensed under the GNU General Public License. XenServer 7.3 uses v4.7 of the Xen hypervisor.
- The **Control Domain**: Also known as 'Domain0', or 'dom0', the Control Domain is a secure, privileged Linux VM (based on a CentOS 7.2 distribution) that runs the XenServer management toolstack. Besides providing XenServer management functions, the Control Domain also runs the driver stack that provides user created Virtual Machines (VMs) access to physical devices.
- The **management toolstack**: Also known as **xapi**, this software toolstack controls VM lifecycle operations, host and VM networking, VM storage, user authentication, and allows the management of XenServer resource pools. xapi provides the publicly documented XenAPI Management Interface which is used by all tools that manage VMs and resource pools.
- VM templates, for installing popular operating systems as VMs.
- A local Storage Repository (SR) reserved for VMs.

Important:

The XenServer host must be installed on a dedicated 64-bit x86 server.

Do not install any other operating system in a dual-boot configuration with the XenServer host; this is an unsupported configuration.

Installation Media

Installers for both the XenServer host and XenCenter are located on the installation media. The installation media also includes the *Readme First*, which provides descriptions of and links to helpful resources, including product documentation for XenServer and XenServer components.

Installation Methods

There are three methods by which to install the XenServer host:

- From a CD



You can download the installer (ISO file format) and burn it to a CD. To download the installer, visit the [XenServer Downloads](#) page.

The main XenServer installation file contains the basic packages required to set up XenServer on your host and install XenCenter on your Windows computer, in conjunction with the desired Windows installation media.

- Set up a network-accessible TFTP server to boot.

For details about setting up a TFTP server to boot the installer using network, see [Appendix C, Network Boot Installations](#).

- Install XenServer to a remote disk on a SAN to enable boot from SAN

For details, see [Appendix B, Boot From SAN Environments](#).

Supplemental Packs

You can install any required supplemental pack after installing XenServer. Download the supplemental pack (filename.iso) to a known location on your computer and install the supplemental pack in the same way as an update. For more information, see [XenServer Supplemental Packs and the DDK Guide](#).

Upgrades

The installer presents the option to upgrade if it detects a previously installed version of XenServer. The upgrade process follows the first-time installation process, but several setup steps are bypassed. The existing settings are retained, including networking configuration, system time and so on.

Important:

Upgrading requires careful planning and attention. For detailed information about upgrading individual XenServer hosts and pools, see [Chapter 6, Upgrading from an existing version of XenServer](#).

4.2. Installing the XenServer host

Tip:

Throughout the installation, quickly advance to the next screen by pressing **F12**. Use **Tab** to move between elements, and **Space** or **Enter** to select. For general help, press **F1**.

Warning:

Installing XenServer overwrites data on any hard drives that you select to use for the installation. Back up data that you want to preserve before proceeding.

To install or upgrade the XenServer host:

1. Boot the computer from the installation CD or, if applicable, network-boot from your TFTP server.
2. Following the initial boot messages and the **Welcome to XenServer** screen, select your keymap (keyboard layout) for the installation.

Note:

If a **System Hardware** warning screen is displayed and you suspect that hardware virtualization assist support is available on your system, check the support site of your hardware manufacturer for BIOS upgrades.

3. The **Welcome to XenServer Setup** screen is displayed.

XenServer ships with a broad driver set that supports most modern server hardware configurations. However, if you have been provided with any additional essential device drivers, press **F9**. The installer steps you through installing the necessary drivers.

Warning:

Only update packages containing driver disks can be installed at this point in the installation process. However, you are prompted later in the installation process to install any update packages containing supplemental packs.

After you have installed all of the required drivers, select **Ok** to proceed.

XenServer enables customers to configure the XenServer installation to boot from FCoE. Press **F10** and follow the instructions displayed on the screen to set up FCoE.

Note:

Before enabling XenServer to boot from FCoE, the configuration required to expose a LUN to the host must be completed manually, including configuring the storage fabric and allocating LUNs to your SAN's public world wide name (PWWN). After completing this configuration, available LUN is mounted to the host's CNA as a SCSI device. The SCSI device can then be used to access the LUN as if it were a locally attached SCSI device. For information about configuring the physical switch and the array to support FCoE, see the documentation provided by the vendor.

4. The XenServer End User License Agreement (EULA) is displayed. Use the **Page Up** and **Page Down** keys to scroll through and read the agreement. Choose **Accept EULA** to proceed.
5. Select an installation action, as appropriate. You might see any of the following options:
 - *Perform clean installation*
 - *Upgrade*: if the installer detects a previously-installed version of XenServer, it offers the option to upgrade. For details on upgrading your XenServer host, see [Chapter 6, Upgrading from an existing version of XenServer](#).
 - *Restore*: if the installer detects a previously-created backup installation, it offers the option to restore XenServer from the backup. For details, see the *XenServer Administrator's Guide*.

Make your selection, and choose **Ok** to proceed.

6. If you have multiple local hard disks, choose a Primary Disk for the installation. Select **Ok**.
7. Choose which disk(s) you want to use for virtual machine storage. Information about a specific disk can be viewed by pressing **F5**.

If you want to use Thin Provisioning to optimize the utilization of available storage, select **Enable thin provisioning**. This selects the local SR of the host to be the one to be used for the local caching of VM VDIS. XenDesktop users are *strongly* recommended to select this option in order for local caching to work properly. For more information, see the [XenServer Administrator's Guide](#).

Choose **Ok**.

8. Select your installation media source.

If installing from a CD, choose **Local media**. If installing using network, select **HTTP or FTP or NFS**, as appropriate. Choose **Ok** to proceed.

If you select **HTTP or FTP or NFS**, set up networking so that the installer can connect to the XenServer installation media files.:

- a. If the computer has multiple NICs, select one of them to be used to access the XenServer installation media files, and then choose **Ok** to proceed.
- b. Choose **Automatic configuration (DHCP)** to configure the NIC using DHCP, or **Static configuration** to configure the NIC manually. If you choose **Static configuration**, enter details as appropriate.
- c. Provide VLAN ID if you have your installation media present in a VLAN network.

- d. If you choose **HTTP or FTP**, you are then prompted to provide the URL for your HTTP or FTP repository, and a username and password, if appropriate.

If you choose **NFS**, you are prompted to provide the server and path of your NFS share.

Select **Ok** to proceed.

9. Indicate if you want to verify the integrity of the installation media. If you select **Verify installation source**, the SHA256 checksum of the packages is calculated and checked against the known value. Verification can take some time. Make your selection and choose **Ok** to proceed.
10. Set and confirm a root password, which XenCenter uses to connect to the XenServer host. You also use this password (with username "root") to log into **xsconsole**, the system configuration console.
11. Set up the primary management interface that is used to connect to XenCenter.

If your computer has multiple NICs, select the NIC which you want to use for management. Choose **Ok** to proceed.

12. Configure the Management NIC IP address by choosing **Automatic configuration (DHCP)** to configure the NIC using DHCP, or **Static configuration** to manually configure the NIC. If you wish to have management interface on a VLAN network, provide the VLAN ID.

Note:

To be part of a pool, XenServer hosts must have static IP addresses or be DNS addressable. When using DHCP, ensure that a static DHCP reservation policy is in place.

13. Specify the hostname and the DNS configuration, manually or automatically via DHCP.

In the **Hostname Configuration** section, select **Automatically set via DHCP** to have the DHCP server provide the hostname along with the IP address. If you select **Manually specify**, enter the desired hostname for the server in the field provided.

Note:

If manually specifying the hostname, enter a short hostname and *not the fully qualified domain name (FQDN)*. Entering an FQDN can cause external authentication to fail, or the XenServer host might be added to AD with a different name.

In the **DNS Configuration** section, choose **Automatically set via DHCP** to get name service configuration using DHCP. If you select **Manually specify**, enter the IP address(es) of your primary (required), secondary (optional), and tertiary (optional) DNS servers in the fields provided.

Select **Ok** to proceed.

14. Select your time zone — the geographical area and then city. You can type the first letter of the desired locale to jump to the first entry that begins with this letter. Choose **Ok** to proceed.
15. Specify how you want the server to determine local time: using NTP or manual time entry. Make your selection, and choose **Ok** to proceed.
16. If using NTP, either select **NTP is configured by my DHCP server** to have DHCP set the time server or enter at least one NTP server name or IP address in the fields below. Choose **Ok**.

Note:

XenServer assumes that the time setting in the BIOS of the server is the current time in UTC.

17. Select **Install XenServer**.

If you elected to set the date and time manually, you are prompted to do so during the installation. Once set, choose **Ok** to proceed.

18. If you are installing from CD, the next screen asks if you want to install any supplemental packs from a CD. If you plan to install any supplemental packs provided by your hardware supplier, choose **Yes**.

If you choose to install supplemental packs, you are prompted to insert them. Eject the XenServer installation CD, and insert the supplemental pack CD. Choose **Ok**.

Select **Use media** to proceed with the installation.

Repeat for each pack to be installed.

19. From the **Installation Complete** screen, eject the installation CD (if installing from CD) and select **Ok** to reboot the server.

After the server reboots, XenServer displays **xsconsole**, a system configuration console. To access a local shell from **xsconsole**, press **Alt+F3**; to return to **xsconsole**, press **Alt+F1**.

Note:

Make note of the IP address displayed. Use this IP address when you connect XenCenter to the XenServer host.

4.2.1. XenServer host Partition Layout

XenServer 7.0 introduced a new host disk partition layout. By moving log files to a larger, separate partition, XenServer enables more detailed logs to be held over a longer period of time, improving the ability to diagnose issues. Simultaneously, this alleviates demands on Dom0's root disk, and avoids potential space issues due to log file disk space consumption. The new layout contains the following partitions:

- 18GB XenServer host control domain (dom0) partition
- 18GB backup partition
- 4GB logs partition
- 1GB swap partition
- 0.5GB UEFI boot partition

In XenServer 6.5.0 and earlier releases, the 4 GB control domain (dom0) partition was used for all dom0 functions, including swap and logging. Customers who do not use remote syslog and those with third-party monitoring tools and supplemental packs found the size of the partition to be limited. XenServer eliminates this issue and provides a dedicated 18GB partition to dom0. In addition, a larger partition dedicated to dom0 reduces demand on the dom0 root disk which can offer significant performance improvements.

The introduction of the 4GB dedicated log partition eliminates scenarios where excessive logging filled up the dom0 partition and affected the behavior of the host. This also enables customers to retain a detailed list of logs for a longer period of time, improving the ability to diagnose issues.

With the introduction of support for UEFI boot in XenServer, the partition layout also contains a dedicated 500MB partition required for UEFI boot.

Note:

If you install XenServer with the new partition layout described above, ensure that you have a disk that is at least 46GB in size.

If you want to install XenServer on smaller devices, that is devices with more than 12GB but less than 46GB disk space, you can perform a clean installation of XenServer using the legacy DOS partition layout. For more information, see [Appendix D, Installing XenServer on Small Devices](#).

Important:

We recommend that you allocate a minimum of 46GB disk space and install XenServer using the new GPT partition layout.

Upgrading to the New Partition Layout

When upgrading to XenServer 7.3 from XenServer 6.5.0 or earlier version using XenCenter, the host partition layout is upgraded to the new layout, provided:

- There is at least 46GB of disk space on the local SR
- There are no VDIs present on the local SR
- You use XenCenter issued with XenServer 7.3 to perform a Rolling Pool Upgrade (RPU) to XenServer 7.3

Warning:

Customers cannot upgrade to the new host partition layout using xe CLI.

During the upgrade process, the RPU wizard checks for VDIs on the local SR. If there are any virtual disks (VDIs) present during the upgrade process, the wizard prompts you to move the VDI. We recommend that you move VDIs on the local SR to a shared SR and then restart the upgrade process in order to continue with the new layout. If, for any reason, the VDIs cannot be moved, or if there is insufficient space (less than 46GB) on the local SR, the upgrade proceeds with the old partition layout and allocates 0.5GB of disk space from the dom0 partition to UEFI boot.

Restoring the Old Partition Layout

If you plan to restore XenServer from version 7.3 to version 6.x, the host partition layout reverts to the 6.x layout. For details, see the corresponding *XenServer Administrator's Guide*.

Legacy Partition Layouts

- XenServer 5.6 Service Pack 2 and earlier used DOS partition tables to separate the root file system and backups from the local storage.
- XenServer 6.0 introduced GUID partition tables to separate root file system, backup and local storage.
- Installing XenServer 7.3 with `disable-gpt` on machines with mandatory initial partition that must be preserved, for example, the Dell Utility Partition, continues to use the DOS partitioning scheme. Upgrades from a XenServer 5.x release to 6.0 and then to 7.3 continue to use the existing DOS partitioning so as not to destroy any existing local storage.

The following table lists the installation and upgrade scenarios and the partition layout that is applied after these operations:

Operation	Number of partitions before upgrade	Number of partitions after installation/upgrade	Partition table type
Clean installation with at least 46GB of primary disk space	NA	6 [*]	New GPT
Clean installation with <code>disable-gpt</code> with a minimum of 12GB of primary disk space	NA	3 [†] (4 [‡] if there is a Utility partition)	DOS
Upgrading from XenServer 6.x to 7.3 with VMs on local SR or with less than 46GB of primary disk space	3	4	Old GPT
Upgrading from XenServer 6.x to 7.3 without any VMs on local storage or with more than 46GB of primary disk space	3	6	New GPT

Operation	Number of partitions before upgrade	Number of partitions after installation/upgrade	Partition table type
Upgrading from XenServer 6.x DOS partition (and Utility partition, if any) to XenServer 7.3	3 (4 if there is a Utility partition)	3 (4 if there is a Utility partition)	DOS

*includes root, backup, local SR (if any), boot, log, and SWAP

†includes root, backup, and local SR (if any)

‡includes root, backup, local SR (if any), and boot

4.3. Installing XenCenter

XenCenter must be installed on a Windows machine that can connect to the XenServer host through your network. The .NET framework version 4.6 or above must also be installed on this workstation.

The XenCenter installation media is bundled with the XenServer installation media. You can also download the latest version of XenCenter from the [Citrix XenServer Download](#) page.

To install XenCenter:

1. Before installing XenCenter, be sure to uninstall any previous version.
2. Launch the installer.

If installing from the XenServer installation CD:

- a. Insert the CD into the DVD drive of the computer which you want to run XenCenter.
 - b. Open the `client_install` folder on the CD. Double-click `XenCenter.msi` to begin the installation.
3. Follow the Setup wizard, which allows you to modify the default destination folder and then to install XenCenter.

4.4. Connecting XenCenter to the XenServer host

To connect XenCenter to the XenServer host:

1. Launch XenCenter. The program opens to the **Home** tab.
2. Click the **Add New Server** icon.
3. Enter the IP address of the XenServer host in the **Server** field. Type the root username and password that you set during XenServer installation. Click **Add**.
4. The first time you add a new host, the **Save and Restore Connection State** dialog box appears. This enables you to set your preferences for storing your host connection information and automatically restoring host connections.

If you later want to change your preferences, you can do so using XenCenter or the Windows Registry Editor.

To do so in XenCenter: from the main menu, select **Tools** and then **Options**. The **Options** dialog box opens. Select the **Save and Restore** tab and set your preferences. Click **OK** to save your changes.

To do so using the Windows Registry Editor, navigate to the key `HKEY_LOCAL_MACHINE\Software\Citrix\XenCenter` (if you installed XenServer for use by all users) and add a key named `AllowCredentialSave` with the string value `true` or `false`.

Chapter 5. Installation and Deployment Scenarios

This chapter steps through the following common installation and deployment scenarios:

- One or more XenServer host(s) with local storage
- Pools of XenServer hosts with shared storage:
 - Multiple XenServer hosts with shared NFS storage
 - Multiple XenServer hosts with shared iSCSI storage

5.1. XenServer hosts with Local Storage

The simplest deployment of XenServer is to run VMs on one or more XenServer host(s) with local storage.

Note:

Without shared storage, XenMotion live migration of VMs between XenServer hosts is not available. However, Storage XenMotion is still available.

Basic hardware requirements:

- One or more 64-bit x86 server(s) with local storage
- One or more Windows workstation(s), on the same network as the XenServer host(s)

High-level procedure:

1. Install the XenServer host software on the server(s).
2. Install XenCenter on the workstation(s).
3. Connect XenCenter to the XenServer host(s).

After you connect XenCenter to the XenServer hosts, storage is automatically configured on the local disk of the hosts.

5.2. Pools of XenServer hosts with Shared Storage

A **pool** comprises multiple XenServer host installations, bound together as a single managed entity. When combined with shared storage, a pool enables VMs to be started on *any* XenServer host in the pool that has sufficient memory, and then dynamically moved between hosts while running (XenMotion), and with minimal downtime. If an individual XenServer host suffers a hardware failure, you can restart the failed VM(s) on another host in the same pool.

If the High Availability (HA) feature is enabled, protected VMs are *automatically* moved in the event of a host failure.

To set up **shared storage** between hosts in a pool, create a storage repository. XenServer storage repositories (SR) are storage containers in which virtual disks are stored. SRs, like virtual disks, are persistent, on-disk objects that exist independently of XenServer. SRs can exist on different types of physical storage devices, both internal and external, including local disk devices and shared network storage. A number of different types of storage are available when you create a new SR, including:

- NFS VHD storage
- Software iSCSI storage
- Hardware HBA storage

This following sections step through setting up two common shared storage solutions — NFS and iSCSI — for a pool of XenServer hosts. Before you create a new SR, configure your NFS or iSCSI storage. Setup differs depending on the type of storage solution that you use. For details, see your vendor documentation. In all cases, to be part of a pool, the servers providing shared storage must have static IP addresses or be DNS addressable. For further information on setting up shared storage, see the *XenServer Administrator's Guide*.

It is recommended that you create a pool before you add shared storage. For pool requirements and setup procedures, see the *XenCenter Help* or the *XenServer Administrator's Guide*.

5.2.1. XenServer hosts with Shared NFS Storage

Basic hardware requirements:

- Two or more 64-bit x86 servers with local storage
- One or more Windows workstation(s), on the same network as the XenServer hosts
- A server exporting a shared directory over NFS

High-level procedure:

1. Install the XenServer host software on the servers.
2. Install XenCenter on the workstation(s).
3. Connect XenCenter to the XenServer hosts.
4. Create your pool of XenServer hosts.
5. Configure the NFS server.
6. Create an SR on the NFS share at the pool level.

Configuring you NFS storage

Before you create an SR, configure the NFS storage. To be part of a pool, the NFS share must have a static IP address or be DNS addressable. You must also configure the NFS server to have one or more target(s) that can be mounted by NFS clients (for example, XenServer hosts in a pool). Setup differs depending on your storage solution, so it is best to see your vendor documentation for details.

To create an SR on the NFS share at the pool level in XenCenter:

1. On the **Resources** pane, select the pool. On the toolbar, click the **New Storage** button. The New Storage Repository wizard opens.

2. Under **Virtual disk storage**, choose NFS VHD as the storage type. Choose **Next** to continue.
3. Enter a name for the new SR and the name of the share where it is located. Click **Scan** to have the wizard scan for existing NFS SRs in the specified location.

Note:

The NFS server must be configured to export the specified path to all XenServer hosts in the pool.

4. Click **Finish**.

The new SR appears in the **Resources** pane, at the pool level.

Creating an SR on the NFS share at the pool level using the xe CLI:

1. Open a console on any XenServer host in the pool.
2. Create the storage repository on *server:/path* by entering the following:

```
xe sr-create content-type=user type=nfs name-label=<sr_name=> \
  shared=true device-config:server=<server> \
  device-config:serverpath=<path>
```

The *device-config-server* argument refers to the name of the NFS server and the *device-config-serverpath* argument refers to the path on the server. Since *shared* is set to true, the shared storage is automatically connected to every host in the pool and any hosts that subsequently join are also connected to the storage. The UUID of the created storage repository is printed to the console.

3. Find the UUID of the pool by using the **pool-list** command.
4. Set the new SR as the pool-wide default by entering the following:

```
xe pool-param-set uuid=<pool_uuid> \
  default-SR=<storage_repository_uuid>
```

As shared storage has been set as the pool-wide default, all future VMs have their disks created on this SR.

5.2.2. XenServer hosts with Shared iSCSI Storage

Basic hardware requirements:

- Two or more 64-bit x86 servers with local storage
- One or more Windows workstation(s), on the same network as the XenServer hosts
- A server providing a shared directory over iSCSI

High-level procedure:

1. Install the XenServer host software on the servers.
2. Install XenCenter on the workstation(s).
3. Connect XenCenter to the XenServer hosts.
4. Create your pool of XenServer hosts.
5. Configure the iSCSI storage.
6. If necessary, enable multiple initiators on your iSCSI device.
7. If necessary, configure the iSCSI IQN for each XenServer host.
8. Create an SR on the iSCSI share at the pool level.

Configuring your iSCSI storage

Before you create an SR, configure the iSCSI storage. To be part of a pool, the iSCSI storage must have a static IP address or be DNS addressable. You must also provide an iSCSI target LUN on the SAN for the VM storage, and



then configure XenServer hosts to be able to see and access it. Both the iSCSI target and each iSCSI initiator on each XenServer host must have a valid and **unique** iSCSI Qualified Name (IQN). For configuration details, it is best to see your vendor documentation.

Configuring an iSCSI IQN for each XenServer host

Upon installation, XenServer automatically attributes a unique IQN to each host. If you must adhere to a local administrative naming policy, you can change the IQN by entering the following on the host console:

```
xe-set-iscsi-iqn <iscsi_iqn>
```

Or, you can use the xe CLI by entering the following:

```
xe host-param-set uuid=<host_uuid> other-config-iscsi_iqn=<iscsi_iqn>
```

To create an SR on the iSCSI share at the pool level using XenCenter:

Warning:

When you create XenServer SRs on iSCSI or HBA storage, any existing contents of the volume are destroyed.

1. On the **Resources** pane, select the pool. On the toolbar, click the **New Storage** button. The New Storage Repository wizard opens.
2. Under **Virtual disk storage**, choose Software iSCSI as the storage type. Choose **Next** to continue.
3. Enter a name for the new SR and then the IP address or DNS name of the iSCSI target.

Note:

The iSCSI storage target must be configured to enable every XenServer host in the pool to have access to one or more LUN(s).

4. If you have configured the iSCSI target to use CHAP authentication, enter the User and Password.
5. Click the **Discover IQNs** button, and then choose the iSCSI target IQN from the Target IQN list.

Warning:

The iSCSI target and all servers in the pool must have *unique* IQNs.

6. Click the **Discover LUNs** button, and then choose the LUN on which to create the SR from the Target LUN list.

Warning:

Each individual iSCSI storage repository must be contained entirely on a single LUN, and cannot span more than one LUN. Any data present on the chosen LUN is destroyed.

7. Click **Finish**.

The new SR appears in the **Resources** pane, at the pool level.

To create an SR on the iSCSI share at the pool level using the xe CLI:

Warning:

When you create XenServer SRs on iSCSI or HBA storage, any existing contents of the volume are destroyed.

1. On the console of any server in the pool, run the command:

```
xe sr-create name-label=<name_for_sr> \  
host-uuid=<host_uuid> device-config:target=<iscsi_server_ip_address> \  
device-config:targetIQN=<iscsi_target_iqn> device-config:SCSIid=<scsi_id> \  
content-type=user type=lvmoiscsi shared=true \  

```

The *device-config:target* argument refers to the name or IP address of the iSCSI server. Since the *shared* argument is set to *true*, the shared storage is automatically connected to every host in the pool and any hosts that subsequently join are also connected to the storage.

The command returns the UUID of the created storage repository.

2. Find the UUID of the pool by running the **pool-list** command.
3. Set the new SR as the pool-wide default by entering the following:

```
xe pool-param-set uuid=<pool_uuid> default-SR=<iscsi_shared_sr_uuid>
```

As shared storage has been set as the pool-wide default, all future VMs have their disks created on this SR.

Chapter 6. Upgrading from an existing version of XenServer

Citrix provides upgrade and update capabilities that you can use to move from some earlier versions of XenServer to XenServer 7.3. Using the upgrade or update capability enables you to apply XenServer 7.3 without having to complete a full installation process. When you upgrade or update an existing version of XenServer to XenServer 7.3, your VMs, SRs, and configuration are retained.

- You can upgrade from XenServer 7.1 Cumulative Update 1 (LTSR), 7.0, 6.5.0, or 6.2.0 to XenServer 7.3 by using the XenServer 7.3 Base Installation ISO. This chapter describes how to upgrade to XenServer 7.3.

Note:

Upgrading from XenServer 7.1 to XenServer 7.3 is not supported. Ensure that Cumulative Update 1 is applied to XenServer 7.1 before attempting to upgrade.

- This Current Release (CR) of XenServer can be applied to the previous XenServer CR (XenServer 7.2) as an update by using the XenServer 7.3 Update ISO. A XenServer CR that is available as an update can be applied in the same way that hotfixes are applied. For more information, see [Chapter 7, Updating XenServer](#).
- For all other versions of XenServer, you cannot upgrade to XenServer 7.3 directly. You can either first upgrade to a later version of XenServer and then upgrade or update that version to 7.3, or you can perform a clean installation using the XenServer 7.3 Base Installation ISO. For more information, see [Chapter 4, Installing XenServer and XenCenter](#).

Note:

To retain VMs from your previous installation of XenServer, export the VMs and import them into your clean installation of XenServer 7.3. VMs exported from any supported version of XenServer can be imported into XenServer 7.3. For more information, see the Importing and Exporting VMs chapter in the *Virtual Machine User's Guide*.

This chapter documents how to upgrade your existing XenServer deployment using XenCenter or the xe CLI. It guides you through upgrading your XenServer hosts — both pooled and standalone — automatically (using the XenCenter Rolling Pool Upgrade wizard) and manually.

Important:

Upgrading XenServer hosts — and particularly a pool of XenServer hosts — requires careful planning and attention. Map your upgrade path carefully, or use the XenCenter Rolling Pool Upgrade wizard, and ensure that you choose the option to *upgrade* when you are stepping through the installer so as to avoid losing any existing data.

Important:

Boot from SAN settings are *not* inherited during the manual upgrade process. When upgrading using the ISO or PXE process, follow the same instructions as used in the installation process below to ensure that `multipathd` is correctly configured. For more information see [Appendix B, Boot From SAN Environments](#).

6.1. Rolling Pool Upgrades

With XenServer, you can perform rolling pool upgrades. A rolling upgrade allows you to upgrade all of the hosts in a pool in such a way that services and resources offered by the pool are available throughout the upgrade process. This upgrade method keeps critical VMs running by enabling you to live migrate them to other hosts in the pool and then to upgrade one host at a time. This process takes only one XenServer host offline at a time.



You can perform a rolling pool upgrade using XenCenter or the xe CLI. If you are using XenCenter, Citrix recommends using the Rolling Pool Upgrade wizard. This wizard organizes the upgrade path automatically and guides you through the upgrade procedure. If you are using the xe CLI, perform the rolling upgrade manually by first planning your upgrade path and then live migrating running VMs between XenServer hosts accordingly.

Important:

Do not use Rolling Pool Upgrade with Boot from SAN environments. For more information on upgrading boot from SAN environments see [Appendix B, Boot From SAN Environments](#).

6.1.1. Upgrading XenServer hosts by using the XenCenter Rolling Pool Upgrade Wizard

You can use the Rolling Pool Upgrade wizard to upgrade XenServer hosts — hosts in a pool or standalone — to the current version of XenServer

Note:

Rolling Pool Upgrade using XenCenter is only available for licensed hosts and pools.

The wizard guides you through the upgrade procedure and organizes the upgrade path automatically. For pools, each of the hosts in the pool is upgraded in turn, starting with the pool master. Before starting an upgrade, the wizard conducts a series of prechecks to ensure that certain pool-wide features, such as HA, are temporarily disabled and that each host in the pool is prepared for upgrade (for example, that the CD/DVD drive of each host is empty). Only one host is offline at a time, and any running VMs are automatically migrated off each host before the upgrade is installed on that host.

The wizard can operate in **Manual** or **Automatic** mode:

- In **Manual Mode**, you must manually run the XenServer installer on each XenServer host in turn and follow the on-screen instructions on the serial console of the host. Once the upgrade begins, XenCenter prompts you to insert the XenCenter installation media or specify a network boot server for each host that you upgrade.
- In **Automatic Mode**, the wizard uses network installation files located on an HTTP, NFS or FTP server to upgrade each host in turn, without requiring you to insert installation media, manually reboot, or step through the installer on each host. If you choose to perform a rolling pool upgrade in this manner, then you must unpack the XenServer installation media onto your HTTP, NFS or FTP server before starting the upgrade.

Before You Upgrade

Before you begin your upgrade, be sure to make the following preparations:

- Download and install XenCenter issued with XenServer 7.3 from the [XenServer Product Download](#) page. Using earlier versions of XenCenter to upgrade to a newer version of XenServer is not supported.
- Citrix strongly recommends that you take a backup of the state of your existing pool using the **pool-dump-database** xe CLI command (see the *XenServer Administrator's Guide*). Taking a backup state ensures that you can revert a partially complete rolling upgrade to its original state without losing VM data.
- Ensure that your hosts are not over-provisioned: check that hosts have sufficient memory to carry out the upgrade. As a general guideline, if N equals the total number of hosts in a pool, then there must be sufficient memory across N-1 hosts to run all of the live VMs in the pool, as the Rolling Pool Upgrade wizard migrates VMs from and shuts down one host in a pool at a time. It is best to suspend any non-critical VMs during the upgrade process.

While the Rolling Pool Upgrade wizard checks that the following actions have been taken, you can choose to perform them before you begin:

- Empty the CD/DVD drives of the VMs in the pool(s).

- Disable HA.

To upgrade XenServer hosts using the XenCenter Rolling Pool Upgrade wizard:

1. Open the Rolling Pool Upgrade wizard: on the **Tools** menu, select **Rolling Pool Upgrade**.
2. Read the **Before You Start** information, and then click **Next** to continue.
3. Select the pool(s) and/or individual hosts that you want to upgrade, and then click **Next**.
4. Choose **Automatic Mode** or **Manual Mode**, depending on whether you are planning an automated upgrade from network installation files located on an HTTP, NFS or FTP server, or a manual upgrade from either a CD/DVD or using network boot (using already existing infrastructure).

Note:

If you choose **Manual Mode**, you must run the XenServer installer on each XenServer host in turn and follow the on-screen instructions on the serial console of the host. Once the upgrade begins, XenCenter prompts you to insert the XenServer installation media or specify a network boot server for each host that you upgrade.

Once you have selected your Upgrade Mode, click **Run Prechecks**.

5. Follow the recommendations to resolve any upgrade prechecks that have failed. If you want XenCenter to automatically resolve all failed prechecks, click **Resolve All**.

Once all prechecks have been resolved, click **Next** to continue.

6. Prepare the XenServer installation media.

If you chose **Automatic Mode**, enter the installation media details. Choose **HTTP**, **NFS** or **FTP** and then specify the URL, username and password, as appropriate.

Note:

If you choose **FTP**, ensure that you escape any leading slashes that are in the file path section of the URL.

Note:

Enter the username and password associated with your HTTP or FTP server, if you have configured security credentials. Do not enter the username and password associated with your XenServer pool.

If you chose **Manual Mode**, note the upgrade plan and instructions.

Click **Start Upgrade**.

7. Once the upgrade begins, the Rolling Pool Upgrade wizard guides you through any actions you must take to upgrade each host. Follow the instructions until you have upgraded all hosts in the pool(s).

Once the upgrade completes, the wizard prints a summary. Click **Finish** to close the wizard.

6.1.2. Upgrading XenServer hosts by using the xe CLI

Important:

Performing a rolling pool upgrade using the xe CLI requires extremely careful planning. Be sure to read the following section with care before you begin.

6.1.2.1. Planning an Upgrade Path

As you plan your upgrade, it is very important to be aware of the following:

- **You can only migrate VMs from XenServer hosts running an older version of XenServer to one running the same version or higher** (for example, from version 7.0 to version 7.0 or from version 7.1 to version 7.3). You **cannot** migrate VMs from an upgraded host to one running an older version of XenServer (for example, from version 7.3 to version 7.1). Be sure to allow for space on your XenServer hosts accordingly.
- **Citrix strongly advises against running a mixed-mode pool (one with multiple versions of XenServer co-existing) for longer than necessary**, as the pool operates in a degraded state during upgrade.
- **Key control operations are not available during upgrade.** Do not attempt to perform any control operations. Though VMs continue to function as normal, VM actions other than migrate are not available (for example, shut down, copy and export). In particular, it is not safe to perform storage-related operations such as adding, removing or resizing virtual disks.
- **Always upgrade the master host first.** Do not place the host into maintenance mode using XenCenter before performing the upgrade as this causes a new master to be designated.
- **Citrix strongly recommends that you take a backup of the state of your existing pool** using the **pool-dump-database** xe CLI command (see the *XenServer Administrator's Guide*). This allows you to revert a partially complete rolling upgrade back to its original state without losing any VM data. Because it is not possible to migrate a VM from an upgraded XenServer host to a host running an older version of XenServer, it might be necessary to shut down VMs if you have to revert the rolling upgrade for any reason.

Before you begin your rolling pool upgrade:

- If you are using XenCenter, upgrade XenCenter to the latest version. The newer version of XenCenter correctly controls older versions of XenServer hosts.
- Empty the CD/DVD drives of the VMs in the pool. For details and instructions, see [Section 6.2.1, “Before You Upgrade a Single XenServer host”](#).
- Disable HA.

6.1.2.2. Performing Rolling Pool Upgrades by using the xe CLI

To upgrade a pool of XenServer hosts using the xe CLI:

1. **Start with the pool master.** Disable the master by using the **host-disable** command. This prevents any new VMs from starting on the specified host.
2. Ensure that no VMs are running on the master. Shut down, suspend or migrate VMs to other hosts in the pool.

To migrate specified VMs to specified hosts, use the **vm-migrate** command. By using the **vm-migrate** command, you have full control over the distribution of migrated VMs to other hosts in the pool.

To live migrate all VMs to other hosts in the pool, use the **host-evacuate** command. By using the **host-evacuate** command, you leave the distribution of migrated VMs to XenServer.

3. Shut down the pool master.

Important:

You are unable to contact the pool master until the upgrade of the master is complete. Shutting down the pool master causes the other hosts in the pool to enter *emergency mode*. In general, XenServer hosts enter emergency mode when they are a member of a pool whose master has disappeared from the network and cannot be contacted after a number of attempts. VMs continue to run on hosts in emergency mode, but control operations are not available.

4. Boot the pool master using the XenServer installation media and method of your choice (such as, installation CD or network). Follow the XenServer installation procedure (see [Chapter 4, Installing XenServer and XenCenter](#)) until the installer offers you the option to upgrade. **Choose to upgrade.**

Warning:

Be absolutely sure to select the upgrade option so as to avoid losing any existing data.

Warning:

If anything interrupts the upgrade of the pool master or if the upgrade fails for any reason, do not attempt to proceed with the upgrade. Reboot the pool master and restore to a working version of the master. For details on restoring XenServer hosts, see the *XenServer Administrator's Guide*.

When your pool master restarts, the other hosts in the pool leave emergency mode and normal service is restored after a few minutes.

5. On the pool master, start or resume any shut down or suspended VMs. Migrate any VMs that you want back to the pool master.
6. Select the next XenServer host in your upgrade path. Disable the host.
7. Ensure that no VMs are running on the host. Shut down, suspend or migrate VMs to other hosts in the pool.
8. Shut down the host.
9. Follow the upgrade procedure for the host, as described for the master in Step 4.

Note:

If the upgrade of a host that is not the master fails or is interrupted, you do not have to revert. Use the **host-forget** command to forget the host. Re-install XenServer on the host, and then join it, as a new host, to the pool using the **pool-join** command.

10. On the host, start or resume any shutdown or suspended VMs. Migrate any VMs that you want back to the host.
11. Repeat Steps 6 – 10 for the rest of the hosts in the pool.
12. Once each host in the pool has been upgraded, it is important to upgrade the XenServer Tools on all VMs. For details, see the *XenServer Virtual Machine User's Guide*.

Note:

Running older versions of the XenServer Tools on newer XenServer installations is not supported, except during the upgrade process.

6.2. Upgrading a Single XenServer host by using the xe CLI

6.2.1. Before You Upgrade a Single XenServer host

Before upgrading a standalone XenServer host, you are required to either shut down or suspend any VMs running on that host. It is important to eject and empty CD/DVD drives of any VMs that you plan to suspend. If you do not empty the CD/DVD drives, you might not be able to resume the suspended VMs after upgrade.

An *empty* VM CD/DVD drive means that the VM is attached to neither an ISO image nor a physical CD/DVD mounted via the XenServer host. Further, it requires that the VM not be attached to any physical CD/DVD drive on the XenServer host at all.

To empty the CD/DVD drive of a VM using the xe CLI:

1. Identify which VMs do not have empty CD/DVD drives by entering the following:

```
xe vbd-list type=CD empty=false
```

This returns a list of all the VM CD/DVD drives that are not empty, for example:

```
uuid ( RO) : abae3997-39af-2764-04a1-ffc501d132d9
vm-uuid ( RO): 340a8b49-866e-b27c-99d1-fb41457344d9
vm-name-label ( RO): VM02_DemoLinux
vdi-uuid ( RO): a14b0345-b20a-4027-a233-7cbd1e005ede
empty ( RO): false
device ( RO): xvdd
```

```
uuid ( RO) : ec174a21-452f-7fd8-c02b-86370fa0f654
vm-uuid ( RO): db80f319-016d-0e5f-d8db-3a6565256c71
vm-name-label ( RO): VM01_DemoLinux
vdi-uuid ( RO): a14b0345-b20a-4027-a233-7cbd1e005ede
empty ( RO): false
device ( RO): xvdd
```

Note the `uuid`, which is the first item in the list.

2. To empty the CD/DVD drives of the VMs listed, enter the following:

```
xe vbd-eject uuid=<uuid>
```

6.2.2. Upgrading a Single XenServer host by using the `xe` CLI

To upgrade a single XenServer host using the `xe` CLI:

1. Disable the XenServer host that you want to upgrade by entering the following:

```
xe host-disable <host-selector>=<host_selector_value>
```

When the XenServer host is disabled, VMs can neither be created nor started on that host. VMs also cannot be migrated to a disabled host.

2. Shut down or suspend any VMs running on the host that you want to upgrade by using the **`xe vm-shutdown`** or **`xe vm-suspend`** commands.
3. Shut down the host by using the **`xe host-shutdown`** command.
4. Follow the XenServer installation procedure (see [Chapter 4, Installing XenServer and XenCenter](#)) until the installer offers you the option to upgrade. **Choose to upgrade.**

Warning:

Be absolutely sure to select the upgrade option so as to avoid losing any existing data.

You are not required to re-enter any settings during the setup procedure. The upgrade process follows the first-time installation process but several setup steps are bypassed, and the existing settings for networking configuration, system time, and so on are retained.

Once your host restarts, normal service is restored after a few minutes.

5. Restart any shutdown VMs, and/or resume any suspended VMs.

Chapter 7. Updating XenServer

This chapter describes the general procedures for applying updates to your XenServer environment through XenCenter and the xe CLI. For more information about applying updates using XenCenter, see the XenCenter Help.

Updates can often be applied with minimal service interruption. Citrix recommends that customers use XenCenter to apply all updates. If you are updating a pool of XenServer hosts, you can avoid downtime of VMs by using XenCenter's **Install Update** wizard to apply updates, updating one host at a time, automatically migrating VMs away from each host as the hotfix or update is applied.

You can configure XenCenter to periodically check for available XenServer and XenCenter updates and new versions; any Alerts are displayed in the **Notifications** pane.

7.1. Types of Update

Citrix releases the following types of updates for XenServer:

- Current Releases, which are full releases of XenServer from the Current Release (CR) stream. These can be applied as updates to some earlier versions of XenServer from the CR stream.
- Hotfixes, which generally supply bug fixes to one or more specific issues.
- Cumulative Updates, which contain accumulated bug fixes. Cumulative updates are applied to XenServer releases from the Long Term Service Release (LTSR) stream.

Supplemental packs provided by our partners can also be applied as updates to XenServer.

Current Releases

XenServer 7.3 is a Current Release of XenServer. The following table shows which previous versions of XenServer you can apply XenServer 7.3 Current Release to as an update:

Version	Apply XenServer 7.3 as an update?	Notes
XenServer 7.2 (CR)	Yes	
XenServer 7.1 Cumulative Update 1 (LTSR)	No	Instead upgrade to XenServer 7.3. For more information, see Chapter 6, Upgrading from an existing version of XenServer
XenServer 7.0		
XenServer 6.5.0		
XenServer 6.2.0		

Note:

- If you use XenCenter to update your hosts, you must update your XenCenter installation to the latest version before beginning.
- Always update the pool master before updating any other hosts in a pool.

Hotfixes

Citrix might release hotfixes for XenServer 7.3 that provide fixes for specific issues.

Hotfixes for XenServer 7.3 are made available from the [Citrix Knowledge Center](#). Citrix recommends that customers regularly check the Knowledge Center for new updates. Alternatively, you can subscribe to email alerts for updates to XenServer by registering for an account at <http://www.citrix.com/support/>.

Cumulative Updates

XenServer 7.3 is a Current Release. No Cumulative Updates are provided for this release.

7.2. Preparing a Pool for an Update

Updates to XenServer can be delivered as a Hotfix or a Cumulative Update or a Current Release. Pay careful attention to the Release Note that is published with each update. Each update can have unique installation instructions, particularly with regard to preparatory and post-update operations. The following sections offer general guidance and instructions for applying updates to your XenServer deployment.

Important:

Before you apply an update to the XenServer pool, pay careful attention to the following:

1. (Applies to XenServer 7.3 hotfixes only) All hosts in the pool must be running XenServer 7.3 before you apply the hotfix.
2. Back up your data before applying an update. For backup procedures, see the *XenServer Administrator's Guide*.
3. Update all servers in a pool within a short period: running a mixed-mode pool (a pool that includes updated and non-updated servers) is not a supported configuration. Schedule your updates to minimize the amount of time that a pool runs in a mixed state.
4. Update all servers within a pool sequentially, always starting with the pool master. XenCenter's **Install Update** wizard manages this process automatically.
5. After applying an update to all hosts in a pool, update any required driver disks before restarting XenServer hosts.

Before you begin updating:

- Log into a user account with full access permissions (for example, as a Pool Administrator or using a local root account).
- Empty the CD/DVD drives of any VMs you plan to suspend. For details and instructions, see [Section 6.2.1, "Before You Upgrade a Single XenServer host"](#).
- If applicable, disable High Availability (HA).

7.3. Applying Updates to a Pool

The update installation mechanism in XenCenter allows you to download and extract the selected update from the Citrix Support website, and enables you to apply an update to multiple hosts and pools simultaneously using the **Install Update** wizard. During the process, the Install Update wizard automatically migrates VMs off each server, places the server in Maintenance mode, applies the update, reboots the host if required, and then, migrates the VMs back to the updated host. Any actions taken at the precheck stage to enable the updates to be applied, such as turning off HA, are reverted.

The **Install Update** wizard carries out a series of checks known as Prechecks before starting the update process - these checks ensure that the pool is in a valid configuration state. It then manages the update path and VM migration automatically. If you prefer to control the update path and VM migration manually, you can update each host individually.

7.3.1. Applying Updates Automatically

XenCenter allows you to apply automated updates that are required to bring your servers up-to-date. You can apply these updates to one or more pools. When you choose to apply automated updates, XenCenter applies the minimum set of updates that are required to bring the selected pool or the standalone server up-to-date. XenCenter minimizes the number of reboots required to bring the pool or the standalone server pool up-to-date, and where possible, limits it to a single reboot at the end. For more information, see [Section 7.4, "Applying Automated Updates"](#).

7.3.2. Viewing Available Updates

The **Updates** section of the **Notifications** view lists the updates that are available for all connected servers and pools.

Note:

- By default, XenCenter periodically checks for XenServer and XenCenter updates. Click **Refresh** to manually check for available updates.
- If the **Updates** tab cannot find any updates because you have disabled automatic check for updates, a message appears on the **Updates** tab. Click **Check for Updates Now** to manually check for updates.

You can select from the **View** dropdown whether to view the list of updates **By Update** or **By Server**.

When you view the list of updates **By Update**, XenCenter displays the list of updates, which can be ordered by Server / Pool or by Date.

- Cumulative Updates and new releases are displayed at the top of this list. Not all new releases can be applied as an update.
- To export this information as a .csv file, click **Export All**. The .csv file lists the update name, a description of the update, the servers that this update can be applied to, the timestamp of the update, and a reference to the web page that the update is downloaded from.
- To apply an update to a server, from the **Actions** drop-down list for that update select **Download and Install**. This extracts the update and opens the **Install Update** wizard on the **Select Servers** page with the relevant servers selected. For more information, see [Section 7.3.3, “Applying an Update to a Pool”](#).
- To open the release note of an update in your browser, click the **Actions** drop-down list and select **Go to Web Page**.

When you view the list of updates **By Server**, XenCenter displays the list of servers connected to XenCenter. This list shows both the updates that can be applied to the servers and the updates that are installed on the servers.

- To export this information as a .csv file, click **Export All**. The .csv file lists the pool that the server belongs to, the server name, the status of the installed XenServer, the update status of the server, the required updates for this server, and the installed updates for this server.
- To apply the updates, click **Install Updates**. This opens the **Install Update** wizard on the **Select Update** page. For more information, see [Section 7.3.3, “Applying an Update to a Pool”](#).

7.3.3. Applying an Update to a Pool

To apply an update to a Pool using XenCenter:

1. From the XenCenter menu, select **Tools** and then **Install Update**.
2. Read the information displayed on the **Before You Start** page and then click **Next**.
3. The Install Update wizard lists available updates on the **Select Update** page. Select the required update from the list and then click **Next**.
4. Select the pool and servers that you want to update and click **Next**. This downloads the update and uploads it to the default SR of the pool.
5. The **Upload** page displays the status of the upload.

Note:

If the default SR in a pool is not shared, or does not have enough space, XenCenter tries to upload the update to another shared SR with sufficient space. If none of the shared SRs have sufficient space, the update is uploaded to local storage on each host.

6. The **Install Update** wizard performs a number of update prechecks, including the space available on the hosts, to ensure that the pool is in a valid configuration state. The wizard also checks whether the hosts must be rebooted after the update is applied and displays the result. In addition, the Install Update wizard checks whether a live patch is available for the hotfix and if the live patch can be successfully applied to the hosts. For information about Live Patching, see [Section 7.5, “Live Patching in XenServer”](#).

Follow the on-screen recommendations to resolve any update prechecks that have failed. If you want XenCenter to automatically resolve all failed prechecks, click **Resolve All**. When the prechecks have been resolved, click **Next**.

7. Choose an **Update Mode**. Review the information displayed on the screen and select an appropriate mode. If the hotfix contains a live patch that can be successfully applied to the hosts, it displays **No action required** on the **Tasks to be performed** screen.

Note:

If you click **Cancel** at this stage, the Install Update wizard reverts the changes and removes the update file from the server.

8. Click **Install update** to proceed with the installation. The Install Update wizard shows the progress of the update, displaying the major operations that XenCenter performs while updating each server in the pool.
9. When the update is applied, click **Finish** to close Install Update wizard.
10. If you chose to manually perform post-update tasks, do so now.

7.3.4. Updating a Pool of XenServer hosts by using the xe CLI

To Update a Pool of XenServer hosts Using the xe CLI:

1. Download the update file to a known location on the computer running the xe CLI. Note the path to the file.
2. Upload the update file to the pool you want to update by running the following:

```
xe -s <server> -u <username> -pw <password> update-upload file-name=<filename>
[sr-uuid=<storage_repository_uuid>]
```

Here, **-s** refers to the name of the pool master. XenServer assigns the update file a UUID, which this command prints. Note the UUID.

Tip:

Once an update file has been uploaded to the XenServer host, you can use the **update-list** and **update-param-list** commands to view information about the file.

3. If XenServer detects any errors or preparatory steps that have not been taken (for example, VMs are running in the pool), it alerts you. Be sure to follow any guidance before continuing with the update.

If necessary, you can shut down or suspend any VMs on the host(s) that you want to update by using the **vm-shutdown** or **vm-suspend** commands.

To migrate specified VMs to specified hosts, use the **vm-migrate** command. By using the **vm-migrate** command, you have full control over the distribution of migrated VMs to other hosts in the pool.

To automatically live migrate all VMs to other hosts in the pool, use the **host-evacuate** command. By using the **host-evacuate** command, you leave the distribution of migrated VMs to XenServer.

4. Update the pool, specifying the UUID of the update file, by running the following:

```
xe update-pool-apply uuid=<UUID_of_file>
```

This applies the update or hotfix to all hosts in the pool.

Alternatively, if you want to update and restart hosts in a rolling manner, you can apply the update file to an individual host by running the following:

```
xe update-apply host-uuid=<UUID_of_host> uuid=<UUID_of_file>
```

5. Verify that the update was applied by using the **update-list** command. If the update has been successful, the *hosts* field contains the host UUID.
6. Perform any post-update operations that are required, such as restarting the XAPI toolstack or rebooting the hosts.

7.3.5. Updating Individual Hosts by using the xe CLI

To Update Individual Hosts by using the xe CLI:

1. Download the update file to a known location on the computer running the xe CLI. Note the path to the file.
2. Shut down or suspend any VMs on the host(s) that you want to update by using the **vm-shutdown** or **vm-suspend** commands.
3. Upload the update file to the host you want to update by running the following:

```
xe -s <server> -u <username> -pw <password> update-upload file-name=<filename>
[sr-uuid=<storage_repository_uuid>]
```

Here, **-s** refers to the hostname. XenServer assigns the update file a UUID, which this command prints. Note the UUID.

Tip:

Once an update file has been uploaded to the XenServer host, you can use the **update-list** and **update-param-list** commands to view information about the update file.

4. If XenServer detects any errors or preparatory steps that have not been taken (for example, VMs are running on the host), it alerts you. Be sure to follow any guidance before continuing with the update.
5. Update the host, specifying the UUIDs of the host and the update file, by running the following:

```
xe update-apply host-uuid=<UUID_of_host> uuid=<UUID_of_file>
```

6. Verify that the update has been successfully applied by using the **update-list** command. If the update has been successful, the *hosts* field contains the host UUID.
7. Perform any post-update operations, as necessary (such as, restarting the XAPI toolstack, or rebooting the host).

7.4. Applying Automated Updates

Automated Updates mode does applies any hotfixes and Cumulative Updates that are available for a host. However, if a new Current Release version is available as an update, **Automated Updates** mode does not apply this update. You must manually select to update to the new Current Release.

As a prerequisite, XenCenter requires Internet access to fetch the required updates.

To view the list of required updates, perform the following steps:

1. Select the host on the Resources pane in XenCenter.
2. Navigate to the **General** tab.
3. Expand the **Updates** section.

You can see:

- **Applied** – lists already-applied updates.
- **Required Updates** – lists the set of updates required to bring the server up-to-date.

Note:

If there are no updates required, the **Required Updates** section is not displayed.

- **Installed supplemental packs** – lists supplemental pack that are installed on the server (if installed).

Note:

If you select a pool instead of a server, the Updates section lists updates that are already applied as **Fully Applied**.

If you want to choose and install a particular update(s), see [Section 7.3.3, “Applying an Update to a Pool”](#) section.

Note:

The Automated Updates feature is available for XenServer Enterprise Edition customers, or those who have access to XenServer through their XenApp/XenDesktop entitlement. To learn more about XenServer editions, and to find out how to upgrade, visit the Citrix website [here](#). For detailed information on Licensing, see the [XenServer 7.3 Licensing FAQ](#).

Applying automated updates using the Install Update wizard.

The following section provides step-by-step instructions on how to apply the set of required updates automatically to bring your pool or standalone host up-to-date.

1. From the XenCenter menu, select **Tools** and then select **Install Update**.
2. Read the information displayed on the **Before You Start** page and then click **Next**.
3. On the Select Update page, select the mechanism to use to install the updates. You can see the following options:
 - **Automated Updates** – (default) this option is visible only if XenCenter is connected to at least one licensed pool or a licensed standalone server. Select this option to automatically download and install all the current updates from Citrix to bring the pool or a standalone server up-to-date.
 - **Download update from Citrix** – the Install Update wizard lists available updates from the Citrix Support site. To apply the updates, see [Section 7.3.3, “Applying an Update to a Pool”](#) section.
 - **Select update or Supplemental pack from disk** – to install an update you have already downloaded, see [Section 7.3.3, “Applying an Update to a Pool”](#) section. To install supplemental pack updates, see the **Installing Supplemental Packs** section in XenCenter Help.
4. To continue with the automatic application of hotfixes, select **Automated Updates** and then click **Next**.
5. Select one or more pools or standalone servers that you want to update and click **Next**. Any server or pool that cannot be updated appears unavailable.
6. The **Install Update** wizard performs a number of update prechecks, including the space available on the hosts, to ensure that the pool is in a valid configuration state.

Follow the on-screen recommendations to resolve any update prechecks that have failed. If you want XenCenter to automatically resolve all failed prechecks, click **Resolve All**. When the prechecks have been resolved, click **Next**.

7. The Install Update wizard automatically downloads and installs the recommended updates. The wizard also shows the overall progress of the update, displaying the major operations that XenCenter performs while updating each server in the pool.

Note:

- The updates are uploaded to the default SR of the pool. If the default SR is not shared, or does not have enough space, XenCenter tries to upload the update to another shared SR with sufficient space. If none of the shared SRs have sufficient space, the update is uploaded to local storage on each host.

- The update progress of a pool stops on the first error regardless of any possible further actions that can still be run.

8. When all the updates have been applied, click **Finish** to close Install Update wizard.

7.5. Live Patching in XenServer

The live patching feature applies to hotfixes only. Current Releases and Cumulative Updates cannot be applied as live patches.

XenServer customers who deploy XenServer hosts can often be required to reboot their hosts after applying hotfixes. This rebooting results in unwanted downtime for the hosts while customers have to wait until the system is restarted. This also reduces the uptime of the hosts and impacts business. Live patching enables customers to install some Linux kernel and Xen hypervisor hotfixes without having to reboot the hosts. Such hotfixes consist of both a live patch, which is applied to the memory of the host, as well as a hotfix that updates the files on disk. This reduces maintenance costs and downtime.

When applying an update using XenCenter, the Install Update wizard checks whether the hosts must be rebooted after the update is applied and displays the result on the Prechecks page. This enables customers to know the post-update tasks well in advance and schedule the application of hotfixes accordingly.

Note:

XenServer Live Patching is available for XenServer Enterprise Edition customers, or those who have access to XenServer through their XenApp/XenDesktop entitlement. To learn more about XenServer editions, and to find out how to upgrade, visit the Citrix website [here](#). For detailed information on Licensing, see [XenServer 7.3 Licensing FAQ](#).

7.5.1. Live Patching Scenarios

Hotfixes can be live patched across pools, hosts, or on a standalone server. Some require a reboot, some require the xapi toolstack to be restarted, and some hotfixes do not have any post-update tasks. The following scenarios describe the behavior when a Live Patch is and is not available for an update.

- **Updates with live patch**— Some hotfixes that update Linux kernel and the Xen hypervisor usually do not require a reboot after applying the hotfix. However, in some rare cases, when the live patch cannot be applied, a reboot might be required.
- **Updates without live patch**—No change in the behavior here. It works as usual.

Note:

If a host does not require a reboot, or if the hotfix contains live patches, XenCenter displays `No action required` on the Update Mode page.

7.5.2. Applying Automated Updates and Live Patching

The **Automated Updates** mode in XenCenter allows you to automatically download and apply the minimum set of hotfixes required to bring your pool or standalone host up-to-date. **Automated Updates** mode does apply any Cumulative Updates that are available for a host. However, if a new Current Release version is available as an update, **Automated Updates** mode does not apply this update. You must manually select to update to the new Current Release.

You can benefit from the Live Patching feature when you apply hotfixes using the Automated Updates mode in XenCenter. You can avoid rebooting hosts if live patches are available and are successfully applied to the hosts that are updated using the **Automated Updates** mode. For more information about the Automated Updates, see [Section 7.4, “Applying Automated Updates”](#)

7.5.3. Enabling Live Patching using XenCenter and the xe CLI

Live Patching feature is enabled by default. Customers can enable or disable Live Patching using XenCenter or xe CLI command.

Using XenCenter

1. Select the pool or the standalone host on the Resource pane
2. From the **Pool** menu (**Server** in case on standalone hosts) menu, select **Properties** and then click Live Patching.
3. On the Live Patching page:
 - Select **Use live Patching when possible** to enable Live Patching.
 - Select **Don't use Live Patching** to disable Live Patching.

Using the xe CLI

- To enable Live Patching, run the following command:

```
xe pool-param-set live-patching-disabled=false uuid=<"pool_uuid">
```
- To disable Live Patching, run the following command:

```
xe pool-param-set live-patching-disabled=true uuid=<"pool_uuid">
```

Appendix A. Troubleshooting

Citrix provides two forms of support: free, self-help support from www.citrix.com/support and paid-for Support Services, which you can purchase from the Support site. With Citrix Technical Support, you can open a Support Case online or contact the support center by phone if you experience technical difficulties during installation.

For information on the different types of support and maintenance programs offered by Citrix, see www.citrix.com/support/programs.html

The Citrix support site, www.citrix.com/support, hosts a number of resources that might be helpful to you if you experience odd behavior, crashes, or other problems during installation. Resources include: forums, knowledge base articles, software updates, security bulletins, tools, and product documentation.

In most cases, if you experience an unknown error during installation, Citrix Technical Support will request that you capture the log file from your host and then send it along for the Support team to inspect. If requested, follow the procedure below.

Using a keyboard connected directly to the host machine (not connected over a serial port), you can access three virtual terminals during installation:

- Press **Alt+F1** to access the main XenServer Installer
- Press **Alt+F2** to access a local shell
- Press **Alt+F3** to access the event log

To capture and save the log file:

1. Press **Alt+F2** to access the local shell.
2. Enter the following:

```
/opt/xensource/installer/report.py
```

3. You are prompted to choose where you want to save the log file: **NFS**, **FTP** or **Local media**.

Select **NFS** or **FTP** to copy the log file to another machine on your network. To do so, networking must be working properly, and you must have write access to a remote machine.

Select **Local media** to save the file to a removable storage device, such as a USB flash drive, on the local machine.

Once you have made your selections, the program writes the log file to your chosen location. The file name is `support.tar.bz2`.

Appendix B. Boot From SAN Environments

Boot from SAN environments offer a number of advantages, including high performance, redundancy and space consolidation. In these environments, the boot disk resides on a remote SAN, and not on the local host. The diskless host communicates with the SAN through a host bus adapter (HBA), and the HBA's BIOS contains the instructions that enable the host to find the boot disk.

Boot from SAN depends on SAN-based disk arrays with either hardware **Fibre Channel** or **HBA iSCSI** adapter support on the host. For a fully redundant boot from SAN environment, you must configure multiple paths for I/O access. To do so, ensure that the root device has multipath support enabled. For information on multipath availability for your SAN environment, consult your storage vendor or administrator. If you have multiple paths available, then you can enable multipathing in your XenServer deployment upon installation.

Warning:

Boot from SAN settings are *not* inherited during the upgrade process. When upgrading using the ISO or network-boot, follow the same instructions as used in the installation process below to ensure that `multipath` is correctly configured.

To install XenServer to a remote disk on a SAN with multipathing enabled:

1. On the Welcome to XenServer screen, press **F2**.
2. At the boot prompt, enter `multipath`

The XenServer installation process configures the XenServer host, which boots from a remote SAN with multipathing enabled.

To enable file system multipathing using PXE or UEFI installation, add `device_mapper_multipath=yes` to your configuration file. The following is an example configuration:

```
default xenserver
label xenserver
  kernel mboot.c32
  append /tftpboot/xenserver/xen.gz dom0_max_vcpus=1-2 \
  dom0_mem=1024M,max:1024M com1=115200,8n1 \
  console=com1,vga --- /tftpboot/xenserver/vmlinuz \
  xencons=hvc console=hvc0 console=tty0 \
  device_mapper_multipath=yes \
  install --- /tftpboot/xenserver /install.img
```

For additional information on storage multipathing in your XenServer environment, see the *XenServer Administrator's Guide*.

B.1. Software-boot-from-iSCSI for Cisco UCS

The Software-boot-from-iSCSI feature enables customers to install and boot XenServer from SAN using iSCSI. Using this feature, XenServer can be installed to, booted from, and run from a LUN provided by an iSCSI target specified in the iSCSI Boot Firmware Table (iBFT). This allows the root disk to be attached through iSCSI.

XenServer supports the following features for Software-boot-from-iSCSI:

- Host installation through PXE-boot
- Cisco UCS vNIC *
- Jumbo Frames (MTU=9000) configured with the Cisco UCS manager

* Software-boot-from-iSCSI has been tested in Legacy BIOS and UEFI boot mode using Cisco UCS vNICs and Power Vault, NetApp and EqualLogic arrays. Other configurations might work, however, they have not been validated.



- Cisco UCS line-rate limiting
- Untagged VLANs
- Networks using the vSwitch backend
- LVHDoISCSI SRs and NFS SRs on the same or different SAN/NAS
- Multipathing of the iSCSI root disk
- Compatibility with common XenServer (Network, Maintenance) operations

Requirements

- The primary management interface (IP addressable) and the network for VM traffic, must use separate interfaces.
- Storage (iSCSI targets) must be on a separate Layer 3 (IP) network to all other network interfaces with IP addresses on the host.
- Storage must be on the same subnet as the storage interface of the XenServer host.

B.1.1. Installing XenServer Using CD Media

Perform the following steps to install XenServer using a CD:

1. Access the boot menu; at the `boot :` prompt enter `menu . c32`
2. Use the cursor keys to select an installation option:
 - For a single path LUN select **install**
 - For a multipathed LUN select **multipath**
3. Press the tab key.

Edit the line ending with the following:

```
--- /install.img
```

4. Using the cursor keys, edit this line to read:

```
use_ibft --- /install.img
```

5. Press **Enter**.

XenServer host installation proceeds as normal.

B.1.2. Installing XenServer Using PXE

Perform the following steps to install XenServer using PXE:

Note:

You must ensure to add the keyword **use_ibft** in the kernel parameters. If multipathing is required, you must add **device_mapper_multipath=enabled**.

The following example shows PXE configuration for a single LUN:

```
label xenserver
kernel mboot.c32
append XS/xen.gz dom0_max_vcpus=2 dom0_mem=1024M,max:1024M
com1=115200,8n1 console=com1,vga --- XS/vmlinuz xencons=hvc console=tty0
console=hvc0 use_ibft --- XS/install.img
```

The following example shows PXE configuration for a multipathed LUN:



```
label xenserver
kernel mboot.c32
append XS/xen.gz dom0_max_vcpus=2 dom0_mem=1024M,max:1024M
com1=115200,8n1 console=com1,vga --- XS/vmlinuz xencons=hvc console=tty0
console=hvc0 use_ibft device_mapper_multipath=enabled --- XS/install.img
```

Appendix C. Network Boot Installations

This appendix describes how to configure your PXE and UEFI environment for XenServer installation.

XenServer supports booting hosts using the UEFI mode. UEFI mode provides a rich set of standardized facilities to the bootloader and operating systems. This allows XenServer to be more easily installed on hosts where UEFI is the default boot mode.

The following section contains information about setting up your TFTP and NFS, FTP or HTTP servers to enable PXE and UEFI booting of XenServer host installations. It then describes how to create an XML answer file, which allows you to perform unattended installations.

C.1. Configuring your PXE and UEFI Environment for XenServer Installation

Before you set up the XenServer installation media, configure your TFTP and DHCP servers. The following sections contain information on how to configure your TFTP server for PXE and UEFI booting. Consult your vendor documentation for general setup procedures.

Note:

XenServer 6.0 moved from MBR disk partitioning to GUID Partition Table (GPT). Some third-party PXE deployment systems might attempt to read the partition table on a machine's hard disk *before* deploying the image to the host.

If the deployment system has not been updated to be compatible with GPT partitioning scheme, and the hard disk has previously been used for a version of XenServer (or any other Operating System) that uses GPT, the PXE deployment system might fail. If this happens, a workaround is to delete the partition table on the disk.

In addition to the TFTP and DHCP servers, you require an NFS, FTP, or HTTP server to house the XenServer installation files. These servers can co-exist on one, or be distributed across different servers on the network.

Additionally, each XenServer host that you want to PXE boot must have a PXE boot-enabled Ethernet card.

The following steps assume that the Linux server you are using has RPM support.

Configuring your TFTP Server for PXE boot

To configure your TFTP server for PXE boot:

1. In the `/tftpboot` directory, create a new directory called `xenserver`.
2. Copy the `mboot.c32` and `pxelinux.0` files from the `/usr/lib/syslinux` directory to the `/tftpboot` directory.

Note:

Citrix strongly recommends using `mboot.c32` and `pxelinux.0` files from the same source (for example, from the same XenServer ISO).

3. From the XenServer installation media, copy the files `install.img` (from the root directory), `vmlinux` and `xen.gz` (from the `/boot` directory) to the new `/tftpboot/xenserver` directory on the TFTP server.
4. In the `/tftpboot` directory, create a new directory called `pxelinux.cfg`.
5. In the `pxelinux.cfg` directory, create your new configuration file called `default`.

The content of this file depends on how you want to configure your PXE boot environment. Two sample configurations are listed below. The first example configuration starts an installation on any machine that

boots from the TFTP server and leaves you to manually respond to the installation prompts. The second performs an unattended installation.

Note:

The following examples show how to configure the installer to run on the physical console, `tty0`. To use a different default, ensure that the console you want to use is the rightmost.

```
default xenserver
label xenserver
kernel mboot.c32
append /tftpboot/xenserver/xen.gz dom0_max_vcpus=2 \
    dom0_mem=1024M,max:1024M com1=115200,8n1 \
    console=com1,vga --- /tftpboot/xenserver/vmlinuz \
    xencons=hvc console=hvc0 console=tty0 \
    --- /tftpboot/xenserver/install.img
```

A sample configuration that performs an unattended installation using the answer file at the URL specified:

Note:

To specify which network adapter to use to retrieve the answer file, include the `answerfile_device=ethX` or `answerfile_device=MAC` parameter and specify either the ethernet device number or the MAC address of the device.

```
default xenserver-auto
label xenserver-auto
kernel mboot.c32
append /tftpboot/xenserver/xen.gz dom0_max_vcpus=2 \
    dom0_mem=1024M,max:1024M com1=115200,8n1 \
    console=com1,vga --- /tftpboot/xenserver/vmlinuz \
    xencons=hvc console=hvc0 console=tty0 \
    answerfile=http://pxehost.example.com/answerfile \
    install --- /tftpboot/xenserver/install.img
```

For more information on PXE configuration file syntax, see the [SYSLINUX](#) website.

Configuring your TFTP Server for UEFI boot

To configure your TFTP server for UEFI boot:

1. In the `/tftpboot` directory, create a new directory called `EFI/xenserver`.
2. Configure your DHCP server to provide `/EFI/xenserver/grubx64.efi` as the boot file.
3. Create `grub.cfg` file. For example:

```
menuentry "XenServer Install (serial)" {
    multiboot2 /EFI/xenserver/xen.gz dom0_mem=1024M,max:1024M watchdog \
    dom0_max_vcpus=4 com1=115200,8n1 console=com1,vga
    module2 /EFI/xenserver/vmlinuz console=hvc0
    module2 /EFI/xenserver/install.img
}
```

4. Copy `grub.cfg` file to `/tftpboot/EFI/xenserver` directory on the TFTP server.
5. From the XenServer installation media, copy the files `grubx64.efi`, `install.img` (from the root directory), `vmlinuz` and `xen.gz` (from the `/boot` directory) to the new `/tftpboot/EFI/xenserver` directory on the TFTP server.

Note:

The following examples show how to configure the installer to run on the physical console, `tty0`. To use a different default, ensure that the console you want to use is the leftmost.



```
default xenserver
label xenserver
kernel mboot.c32
append /tftpboot/EFI/xenserver/xen.gz dom0_mem=1024M,max:1024M watchdog \
    dom0_max_vcpus=4 com1=115200,8n1 \
console=com1,vga --- /tftpboot/EFI/xenserver/vmlinuz \
console=hvc0 console=tty0 \
--- /tftpboot/EFI/xenserver/install.img
```

A sample configuration that performs an unattended installation using the answer file at the URL specified:

Note:

To specify which network adapter to use to retrieve the answer file, include the `answerfile_device=ethX` or `answerfile_device=MAC` parameter and specify either the ethernet device number or the MAC address of the device.

```
default xenserver-auto
label xenserver-auto
kernel mboot.c32
append /tftpboot/EFI/xenserver/xen.gz dom0_mem=1024M,max:1024M watchdog \
    dom0_max_vcpus=4 com1=115200,8n1 \
console=com1,vga --- /tftpboot/EFI/xenserver/vmlinuz \
console=hvc0 console=tty0 \
answerfile=http://pxehost.example.com/answerfile \
install --- /tftpboot/EFI/xenserver/install.img
```

For details for your specific operating system, see your server operating system manual. The information here is a guide that can be used for Red Hat, Fedora, and some other RPM-based distributions.

To set up the XenServer installation media on a HTTP, FTP, or NFS server:

1. On the server, create a new directory from which the XenServer installation media can be exported via HTTP, FTP or NFS.
2. Copy the entire contents of the XenServer installation media to the newly created directory on the HTTP, FTP or NFS server. This is your installation repository.

Note:

When copying the XenServer installation media, ensure that you copy the file `.treeinfo` to the newly created directory.

Preparing the destination system

1. Start the system and enter the Boot Menu (**F12** in most BIOS programs) and select to boot from your Ethernet card.
2. The system then PXE boots from the installation source you set up, and the installation script starts. If you have set up an answer file, the installation can proceed unattended.

Installing Supplemental Packs during XenServer installation

Supplemental Packs are used to modify and extend the functionality of XenServer, by installing software into the control domain (Dom0). For example, an OEM partner might want to ship XenServer with a suite of management tools that require SNMP agents to be installed, or provide a driver that supports the latest hardware. Users can add supplemental packs either during initial XenServer installation, or at any time afterwards.

When installing supplemental packs during XenServer installation, unpack each supplemental pack into a separate directory.

Facilities also exist for OEM partners to add their supplemental packs to the XenServer installation repositories to allow automated factory installations.

C.2. Creating an answer file for unattended PXE and UEFI installation

To perform installations in an unattended fashion, create an XML answer file. Here is an example answer file:

```
<?xml version="1.0"?>
  <installation srtype="ext">
    <primary-disk>sda</primary-disk>
    <guest-disk>sdb</guest-disk>
    <guest-disk>sdc</guest-disk>
    <keymap>us</keymap>
    <root-password>mypassword</root-password>
    <source type="url">http://pxehost.example.com/xenserver/</source>
    <post-install-script type="url">
      http://pxehost.example.com/myscripts/post-install-script
    </post-install-script>
    <admin-interface name="eth0" proto="dhcp" />
    <timezone>Europe/London</timezone>
  </installation>
```

Contain all nodes within a root node named *installation*.

Note:

If you want to enable Thin Provisioning, you can specify an `srtype` attribute as `ext`. If this attribute is not specified, the default local storage type is LVM. Thin Provisioning sets the local storage type to EXT3 and enables local caching for XenDesktop to work properly. For details, see the *XenServer Administrator's Guide*.

The following is a summary of the elements. All node values are text, unless otherwise stated. Required elements are indicated.

Element	Description	Required?
<primary-disk>	<p>The name of the storage device where the control domain is installed, equivalent to the choice made on the <i>Select Primary Disk</i> step of the interactive installation process.</p> <p>Attributes:</p> <p>You can specify a guest-storage attribute with possible values <i>yes</i> and <i>no</i>. For example:</p> <pre><primary-disk guest-storage="no">sda</primary-disk></pre> <p>If this attribute is not specified, the default is <i>yes</i>. If you specify <i>no</i>, it is possible to automate an installation scenario where no storage repository is created, if, in addition, no guest-disk keys are specified.</p>	Y
<guest-disk>	<p>The name of a storage device to be used for storing guests. Use one of these elements for each extra disk.</p>	N
<keymap>	<p>The name of the keymap to use during installation.</p> <pre><keymap>us</keymap></pre> <p>The default value, <i>us</i> is considered if you do not specify a value for this attribute.</p>	Y

Element	Description	Required?
<root-password>	<p>The desired root password for the XenServer host. If a password is not provided, a prompt is displayed when the host is first booted.</p> <p>Attributes:</p> <p>Type: <i>hash</i> or <i>plaintext</i></p> <p>For example:</p> <pre><root-password type="hash">hashedpassword \ </root-password></pre>	N
<source>	<p>The location of the uploaded XenServer installation media or a Supplemental Pack. Element can occur multiple times.</p> <p>Attributes:</p> <p>type: <i>url</i>, <i>nfs</i>, or <i>local</i></p> <p>If local, leave the element empty. For example,</p> <pre><source type="url"> http://server/packages </source> <source type="local" /> <source type="nfs"> server:/packages </source></pre>	Y

Element	Description	Required?
<script>	<p>Where the post-install-script is.</p> <p>Attributes:</p> <p><i>stage: filesystem-populated, installation-start, or installation-complete</i></p> <p>When <i>filesystem-populated</i> is used, the script is invoked just before root file system is unmounted (for example, after installation/upgrade, initrds already built, etc.). The script receives an argument that is the mount point of the root file system.</p> <p>When <i>installation-complete</i> is used, the script is run after the installer has finished all operations (and hence the root file system is unmounted). The script receives an argument that has a value of zero if the installation completed successfully, or is non-zero if the installation failed for any reason.</p> <p><i>type: url, nfs, or local</i></p> <p>If <i>url</i> or <i>nfs</i>, put the URL or NFS path in the PCDATA; if <i>local</i>, leave the PCDATA empty. For example,</p> <pre><script stage="filesystem-populated" type="url"> http://prehost.example.com/post-install-script </script> <script stage="installation-start" type="local"> file:///scripts/run.sh </script> <script stage="installation-complete" type="nfs"> server:/scripts/installation-pass-fail-script </script></pre> <p>Note that if a local file is used, ensure that the path is absolute. This generally means that the <code>file://</code> prefix is followed by a further forward slash, and the complete path to the script.</p>	N
<admin-interface>	<p>The single network interface to be used as the host administration interface.</p> <p>Attributes:</p> <p><i>proto: dhcp or static</i></p> <p><i>name: eth0</i> for example.</p> <p><i>vlan: VLAN_ID</i> (Optional)</p> <p>Children:</p> <ul style="list-style-type: none"> <ipaddr>: The IP address, if <i>proto="static"</i> <subnet>: The subnet mask, if <i>proto="static"</i> <gateway>: The gateway, if <i>proto="static"</i> <p>All three child elements are <i>required</i> if <i>proto="static"</i></p>	N

Element	Description	Required?
<timezone>	In the format used by the TZ variable, for example Europe/London, or America/Los_Angeles.	Y
<name-server>	The IP address of a nameserver. Add one of these elements for each nameserver you want to use.	N
<hostname>	Specify if you want to manually set a hostname.	N
<ntp-server>	Specify one or more NTP servers.	N

You can also perform automated upgrades by changing the answer file appropriately. Set the mode attribute of the installation element to *upgrade*, specify the disk on which the existing installation lives with the *existing-installation* element, and leave the *primary-disk* and *guest-disk* elements unspecified. For example:

```
<?xml version="1.0"?>
  <installation mode="upgrade">
    <existing-installation>sda</existing-installation>
    <source type="url">http://pxehost.example.com/xenserver/</source>
    <post-install-script type="url">
      http://pxehost.example.com/myscripts/post-install-script
    </post-install-script>
  </installation>
```

Appendix D. Installing XenServer on Small Devices

XenServer enables customers with smaller devices, that is, devices with more than 12GB but less than 46GB of disk space, to install XenServer 7.3 using the legacy DOS partition layout. The legacy DOS partition layout includes:

- 4GB Boot partition
- 4GB Backup partition
- SR partition (if present on the local disk)

To install XenServer 7.3 on small devices, you must add **disable-gpt** to the dom0 parameters. You can use menu.c32 to add the parameter to dom0.

Note:

Any utility partition presented by the host to the installer before the installation process is preserved.

Important:

Citrix recommends that you allocate a minimum of 46GB disk space and install XenServer 7.3 using the new GPT partition layout. For more information, see [Section 4.2.1, “XenServer host Partition Layout”](#).